



**SCHUIL & ASSOCIATES**  
REAL ESTATE



## **+/-68 Acres – Open Land – Seville, CA**

Seville, CA 93292, USA • 68 Acres

CalBRE: 00845607

**Schuil & Associates**

559-734-1700 • [www.schuil.com](http://www.schuil.com)

**LOCATION:**

Located in Seville, CA near Stone Corral Elementary School.

**SIZE:****+/-68 Assessed Acres**

+/-46.34 Assessed Acres of Agricultural Land

+/-21.79 Assessed Acres of Developmental Land

**PLANTINGS:**

Open Ground

**SOILS:**

See 'Soil Map' for details.

**LEGAL:**

See 'Parcel Map' for details.

**BUILDINGS:**

No Buildings.

**WATER:**

Agricultural Land – Located in Alta Irrigation District

Development Land – Located in Seville Water Company

**REMARKS:**

Property is made up of several parcels in, and surrounding the small community of Seville, CA. Seville is a small farming town with one (1) gas station and one (1) school.

Agricultural Land and Development Land can be sold together or separately.

Agricultural Land: \$995,000 (+/- \$21,471 per acre)

Development Land: \$1,400,000

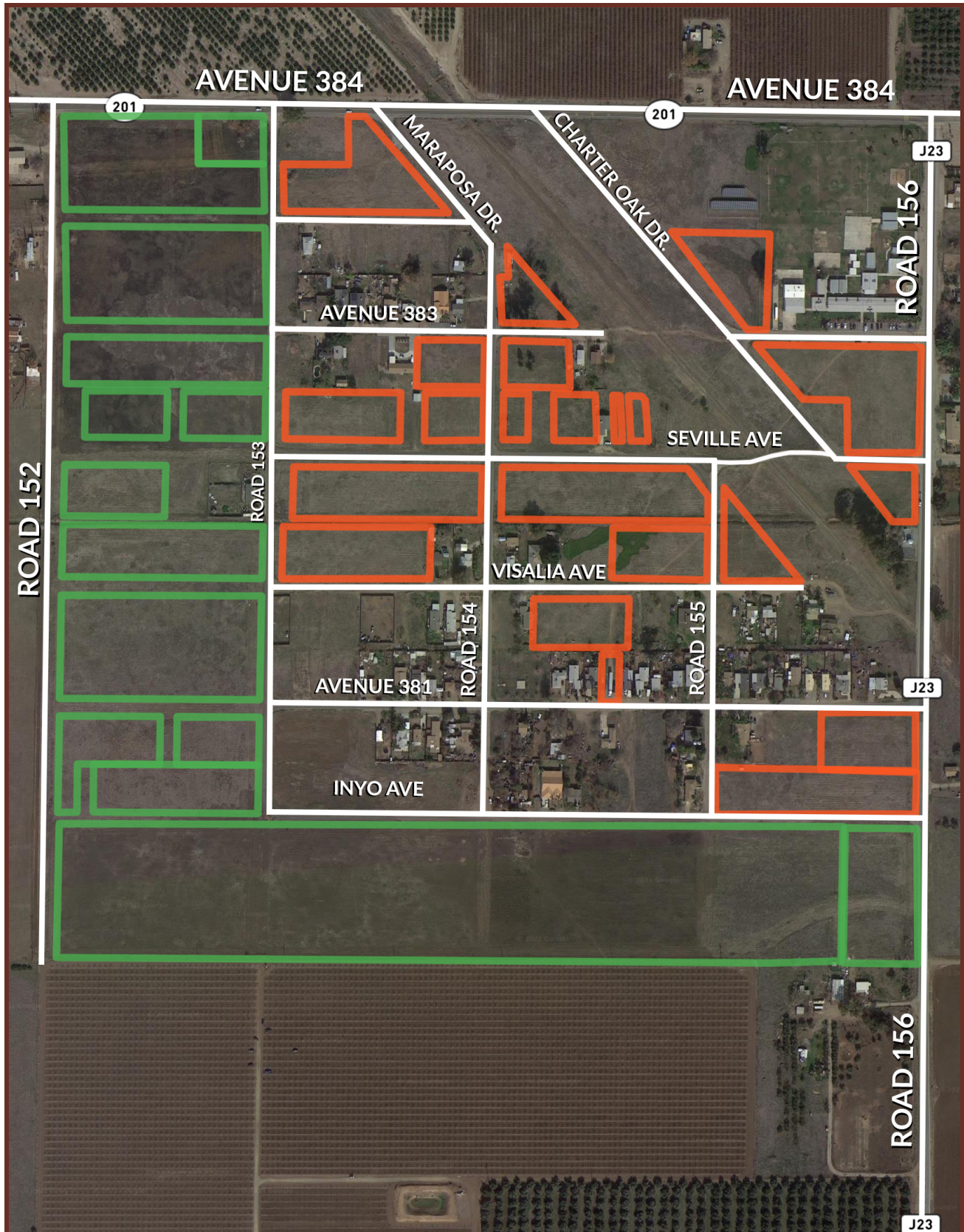
**PRICE:**

**\$2,395,000**

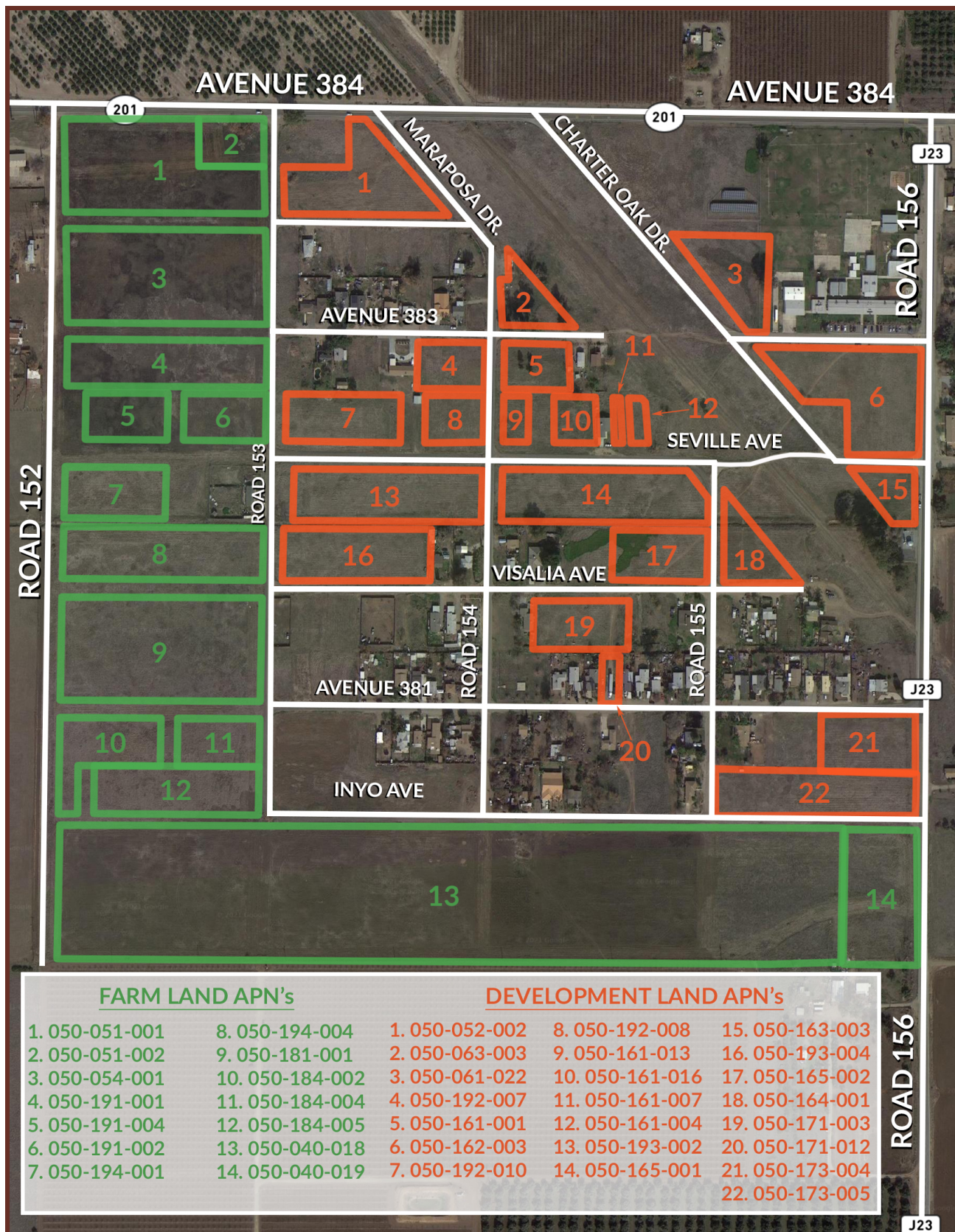
**CONTACT:**

Stephen Schuil  
559-859-6731 (m)  
stephen@schuil.com  
CalBRE #01713755

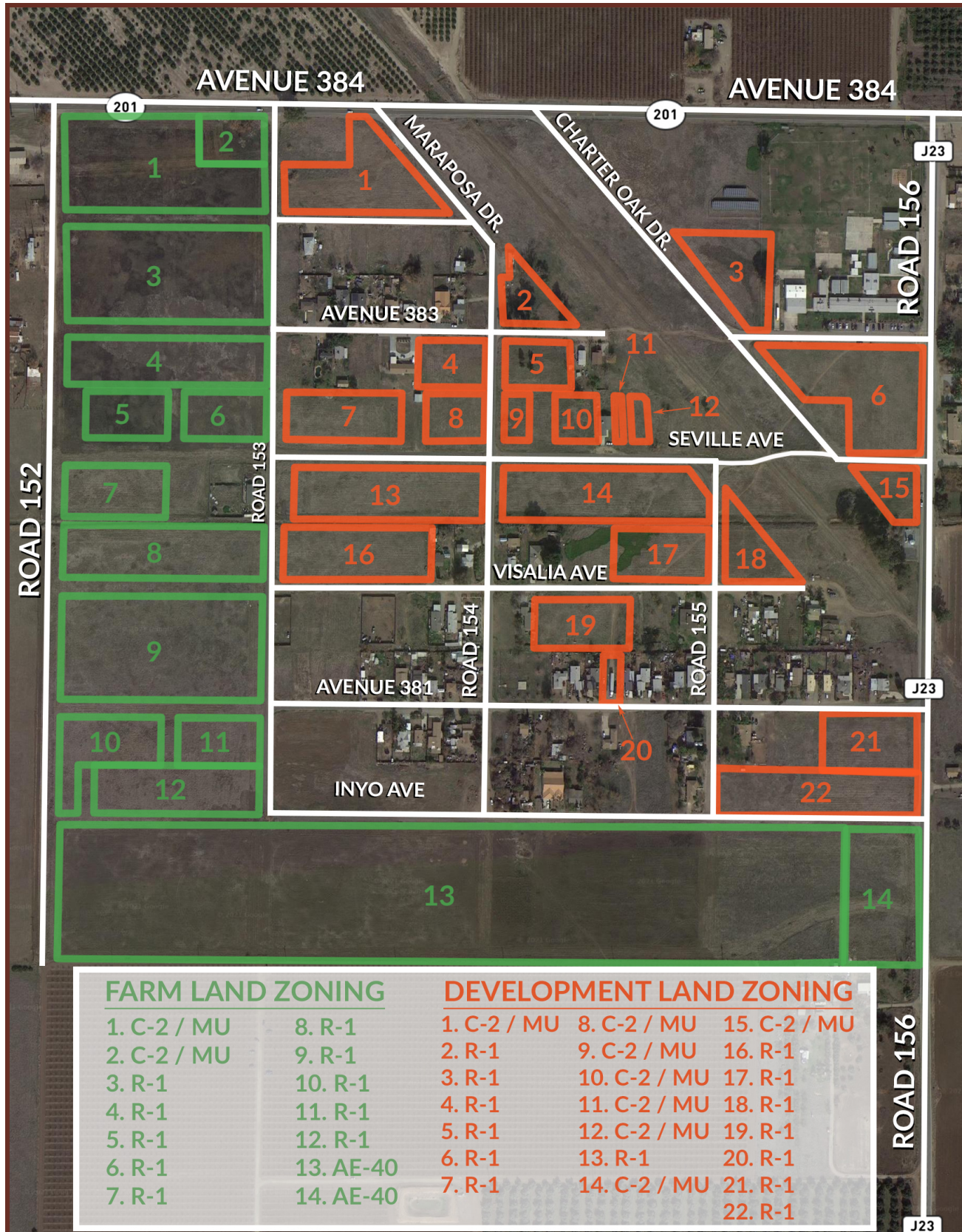




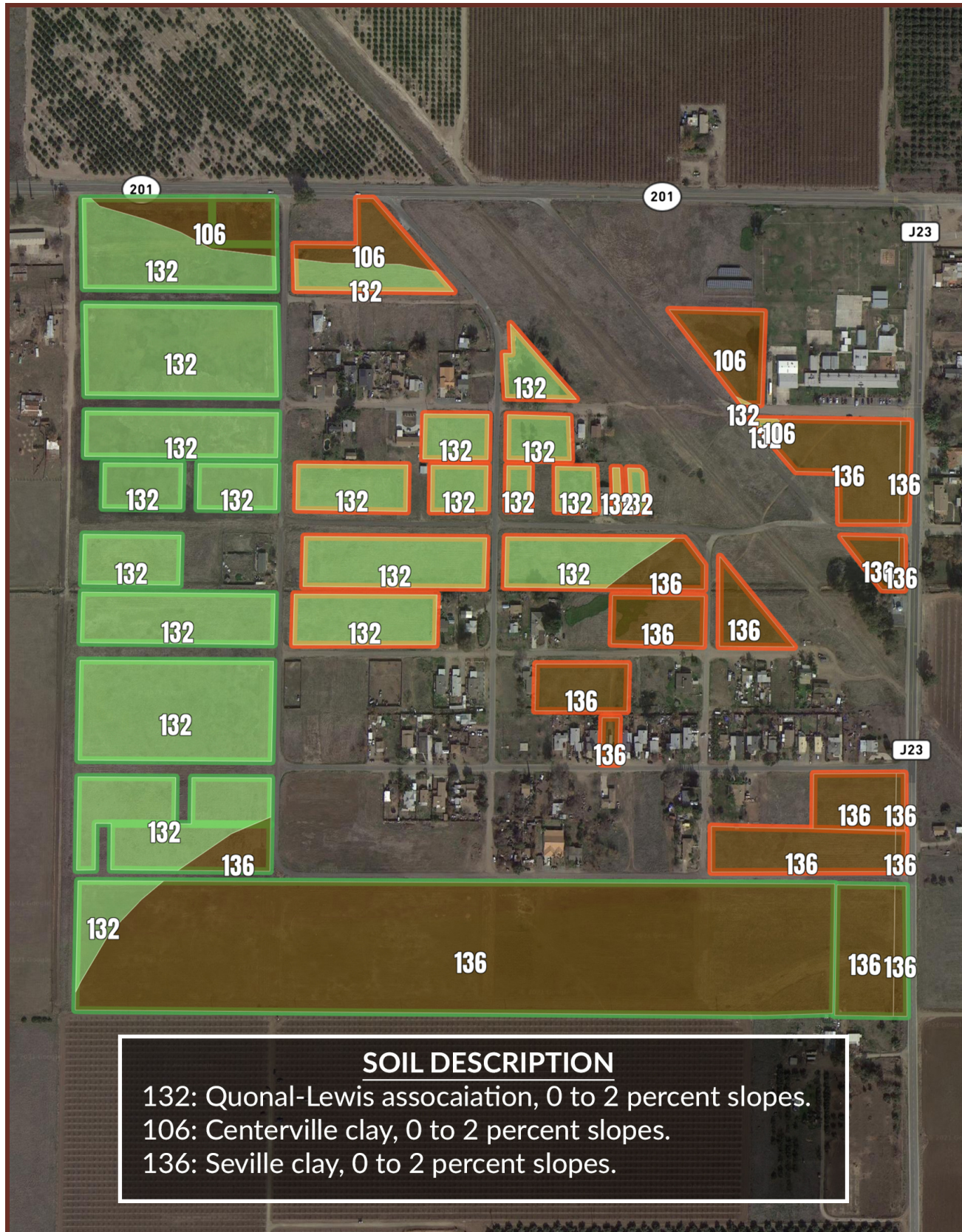












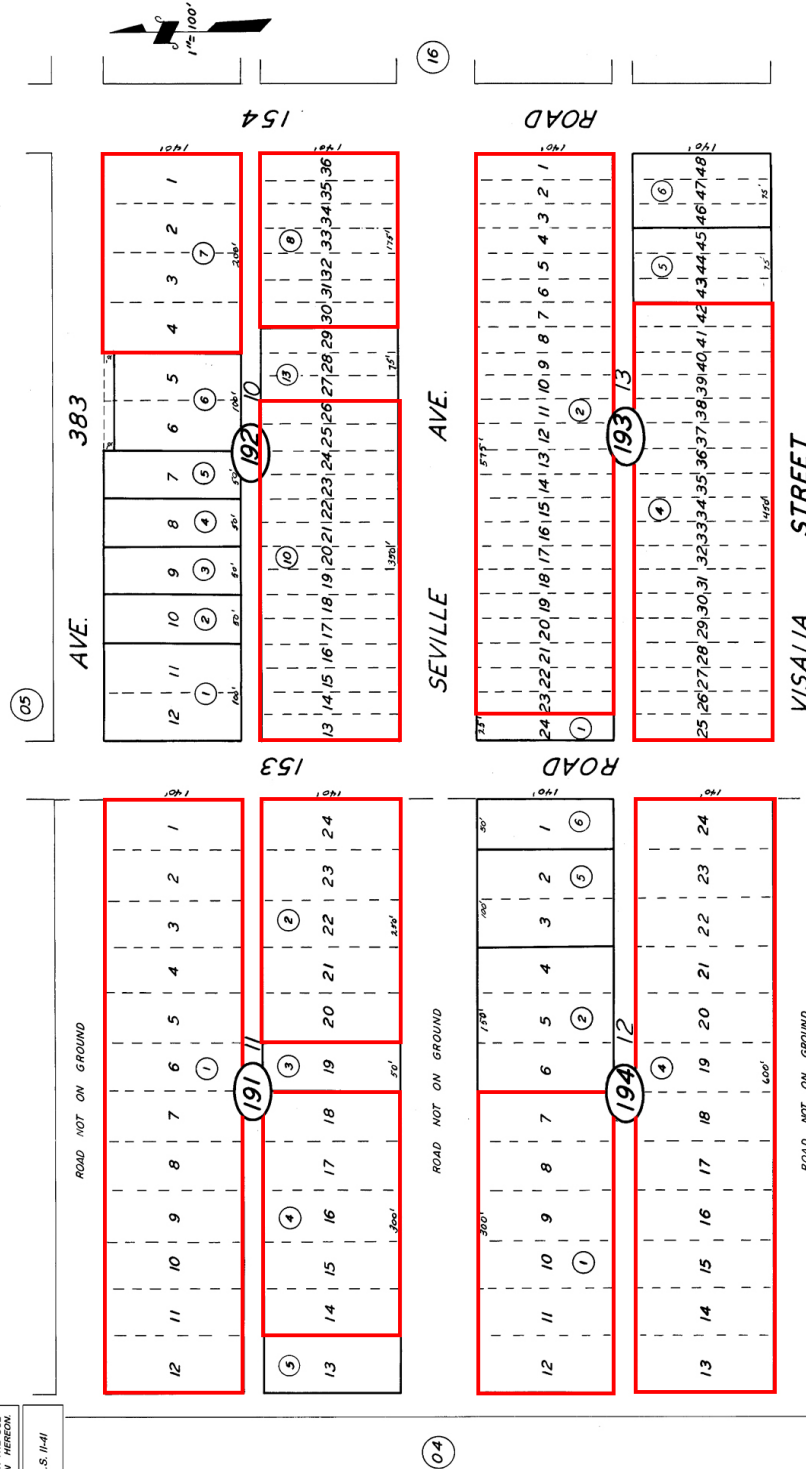


050-19

TAX CODE AREA  
138-001

POR. NE 1/4 SEC. 2, T.17S., R.25E., M.D.B&M.

**DISCLAIMER**  
THIS MAP IS PREPARED FOR LOCAL  
PROPERTY ASSESSMENT PURPOSES  
ONLY. THE PARCELS SHOWN HEREON  
ARE BASED ON THE BEST AVAILABLE  
LOCAL SUBDIVISION ORDINANCES. NO  
LIABILITY IS ASSUMED FOR THE USE  
OF THE INFORMATION HEREON.  
REVISED: 05/22/2012  
REASON: REMOVED L.S. II-41  
CAD TECH. RLW



ASSESSOR'S MAPS BK. 50, PG. 19  
COUNTY OF TULARE, CALIF.

NOTE - ASSESSOR'S BLOCK NUMBERS SHOWN IN ELLIPSES  
ASSESSOR'S PARCEL NUMBERS SHOWN IN CIRCLES

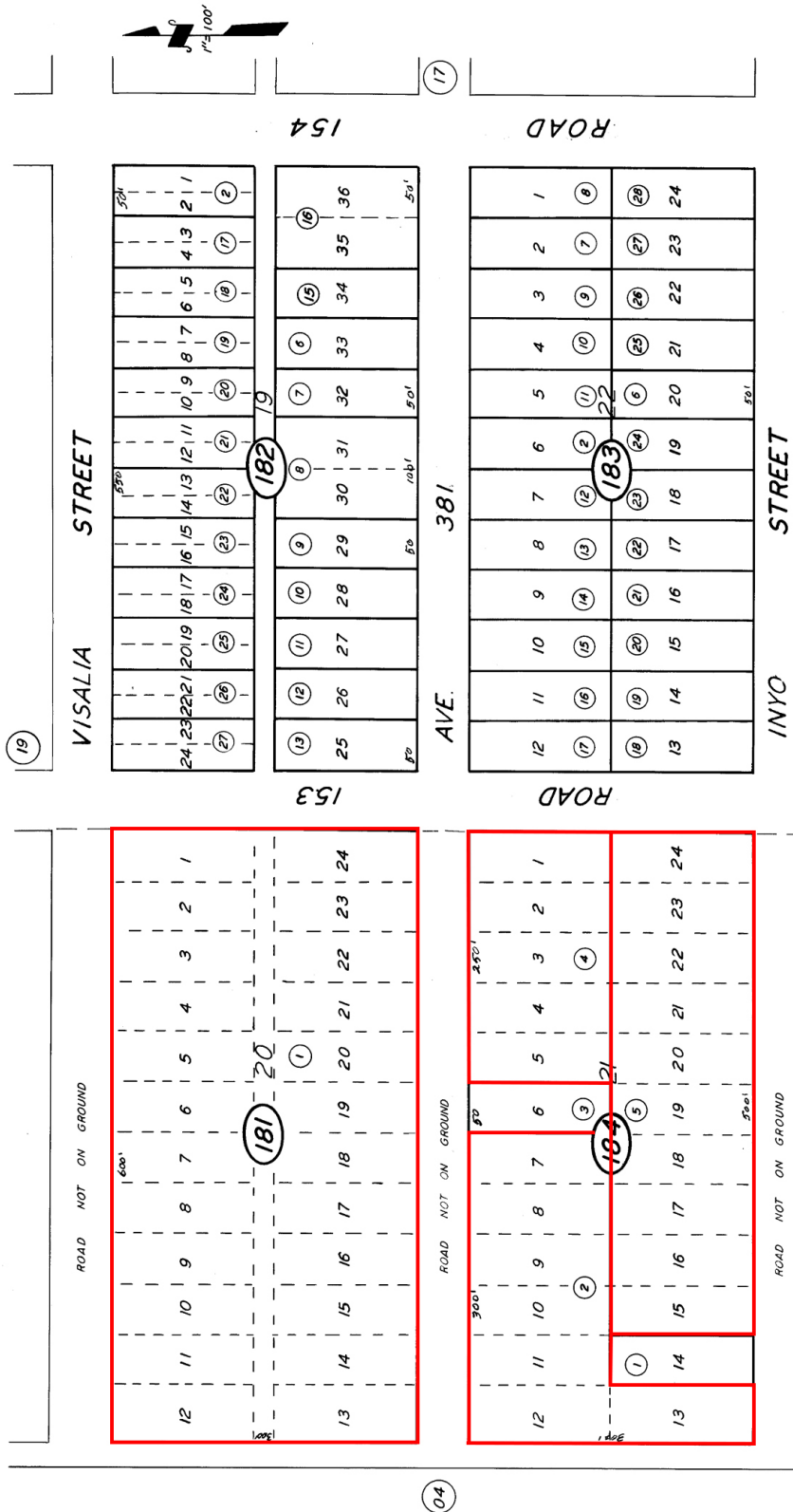
POR. SEVILLE TOWNSITE, R.M. 15-4



50-18

TAX CODE AREA  
138-001

POR. NE 1/4 SEC. 2, T.17S., R.25E., M.D.B.&M.



POR. SEVILLE TOWNSITE, R.M.15-4  
BLKS. 19, 20, 21, 22

ASSESSOR'S MAPS BK. 50, PG. 18  
COUNTY OF TULARE, CALIF.

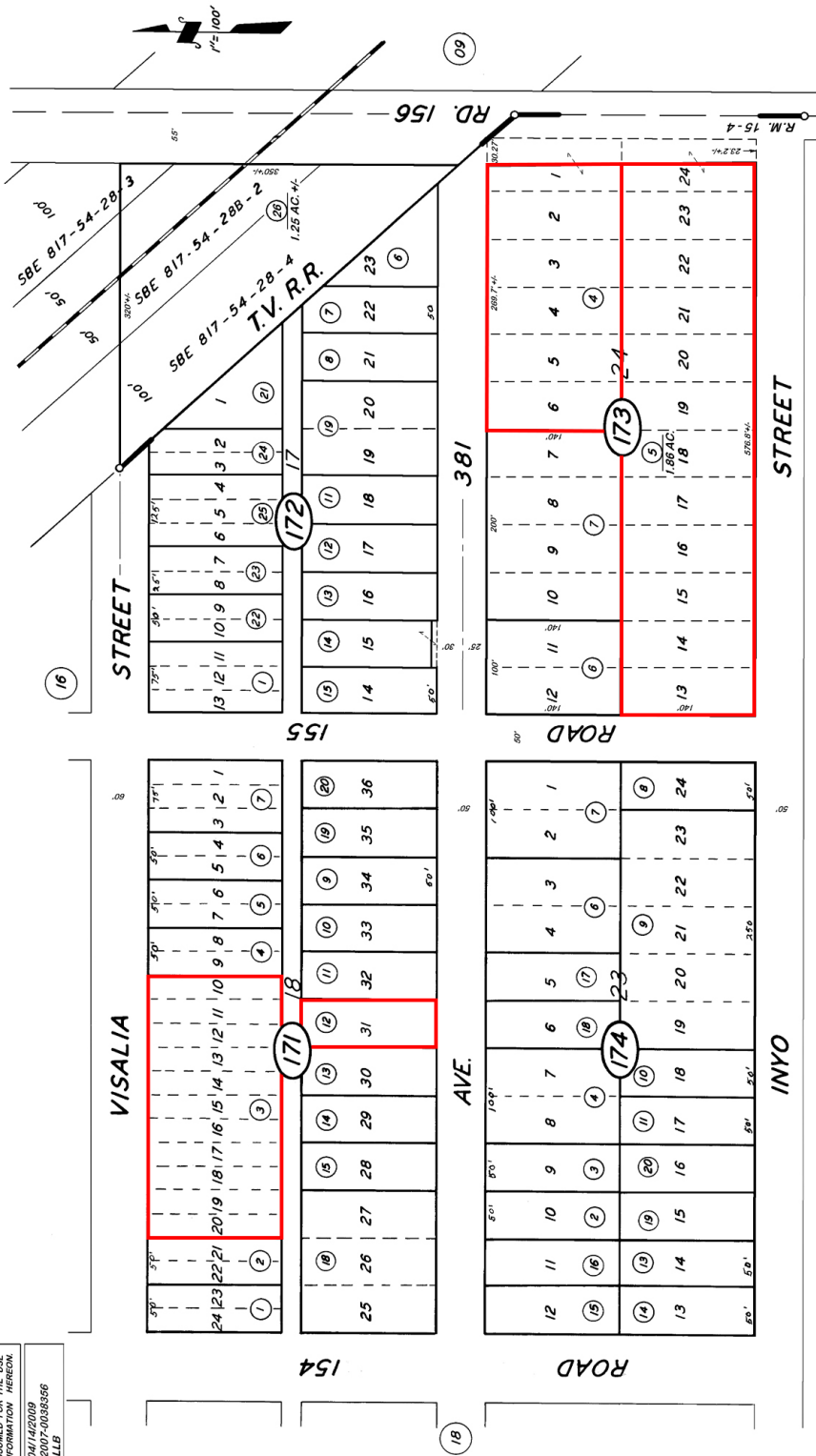
NOTE — ASSESSOR'S BLOCK NUMBERS SHOWN IN ELLIPSES  
ASSESSOR'S PARCEL NUMBERS SHOWN IN CIRCLES

**050-17**  
TAX CODE AREA  
**138-001**

**POR. NE 1/4 SEC. 2, T.17S, R.25E., M.D.B. & M.**

**DISCLAIMER**  
THIS MAP WAS PREPARED FOR LOCAL  
PROPERTY ASSESSMENT PURPOSES  
ONLY. IT IS NOT A SURVEY AND  
MAY NOT COMPLY WITH STATE AND  
LOCAL SUBDIVISION ORDINANCES. NO  
WARRANTY IS MADE BY THE  
ASSessor OF THE INFORMATION HEREON.

REVISED: 04/12/2009  
ASSessor: 04/12/2009  
CAD TECH: LLB



**VICINITY OF SEVILLE**  
ASSESSOR'S MAPS BK. 050, PG. 17  
COUNTY OF TULARE, CALIF.

NOTE — ASSESSOR'S BLOCK NUMBERS SHOWN IN ELIPSES  
ASSESSOR'S PARCEL NUMBERS SHOWN IN CIRCLES

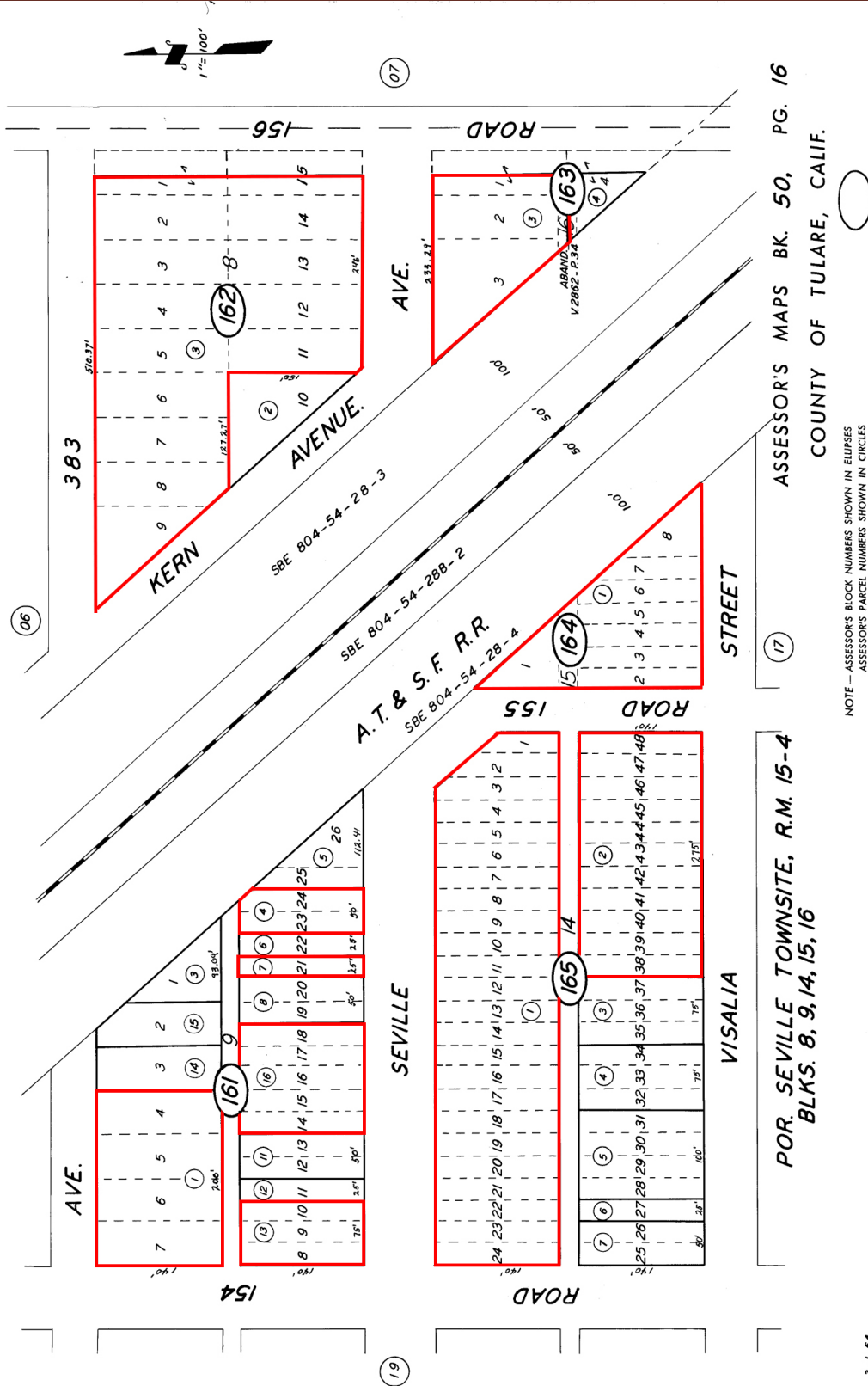
**POR. SEVILLE, R.M. 15-4**



50-16

TAX CODE AREA  
138-001

POR. NE 1/4 SEC. 2, T. 17 S., R. 25 E., M. D. B. & M.



NOTE - ASSESSOR'S BLOCK NUMBERS SHOWN IN ELIPSES  
ASSESSOR'S PARCEL NUMBERS SHOWN IN CIRCLES

ASSESSOR'S MAPS BK. 50, PG. 16  
COUNTY OF TULARE, CALIF.

POR. SEVILLE TOWNSITE, R.M. 15-4  
BLKS. 8, 9, 14, 15, 16

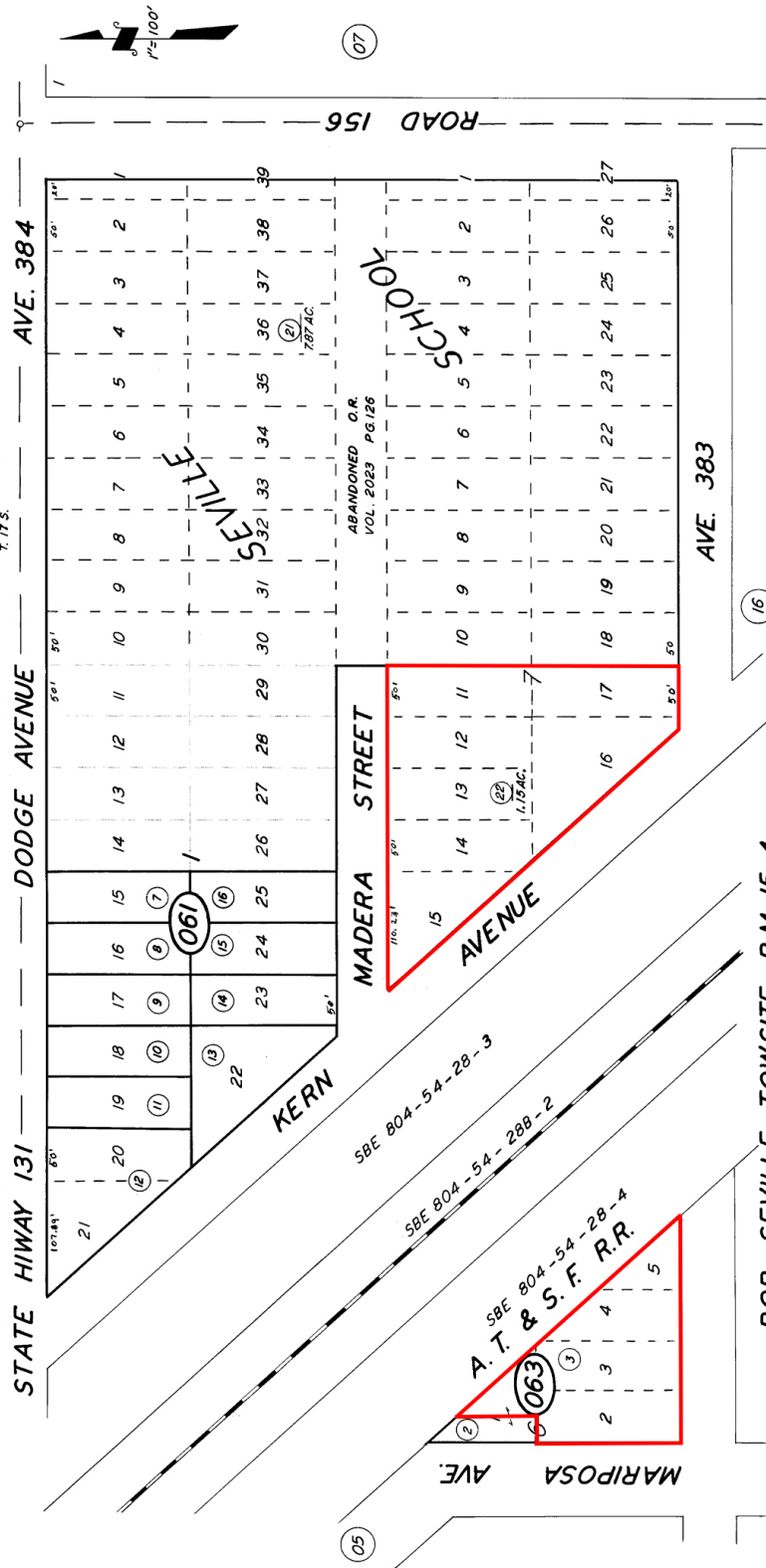
50-06

TAX CODE AREA  
138-001

POR. NE 1/4 SEC. 2, T.17S., R.25E., M.D.B.&M.

BK. 35

T.16 S.  
T.17 S.



POR. SEVILLE TOWNSHIP, R.M. 15-4  
RECORD OF SURVEY, L.S. 11-4 (NE 1/4 SEC. 1)

ASSESSOR'S MAPS BK. 50, PG. 06  
COUNTY OF TULARE, CALIF.

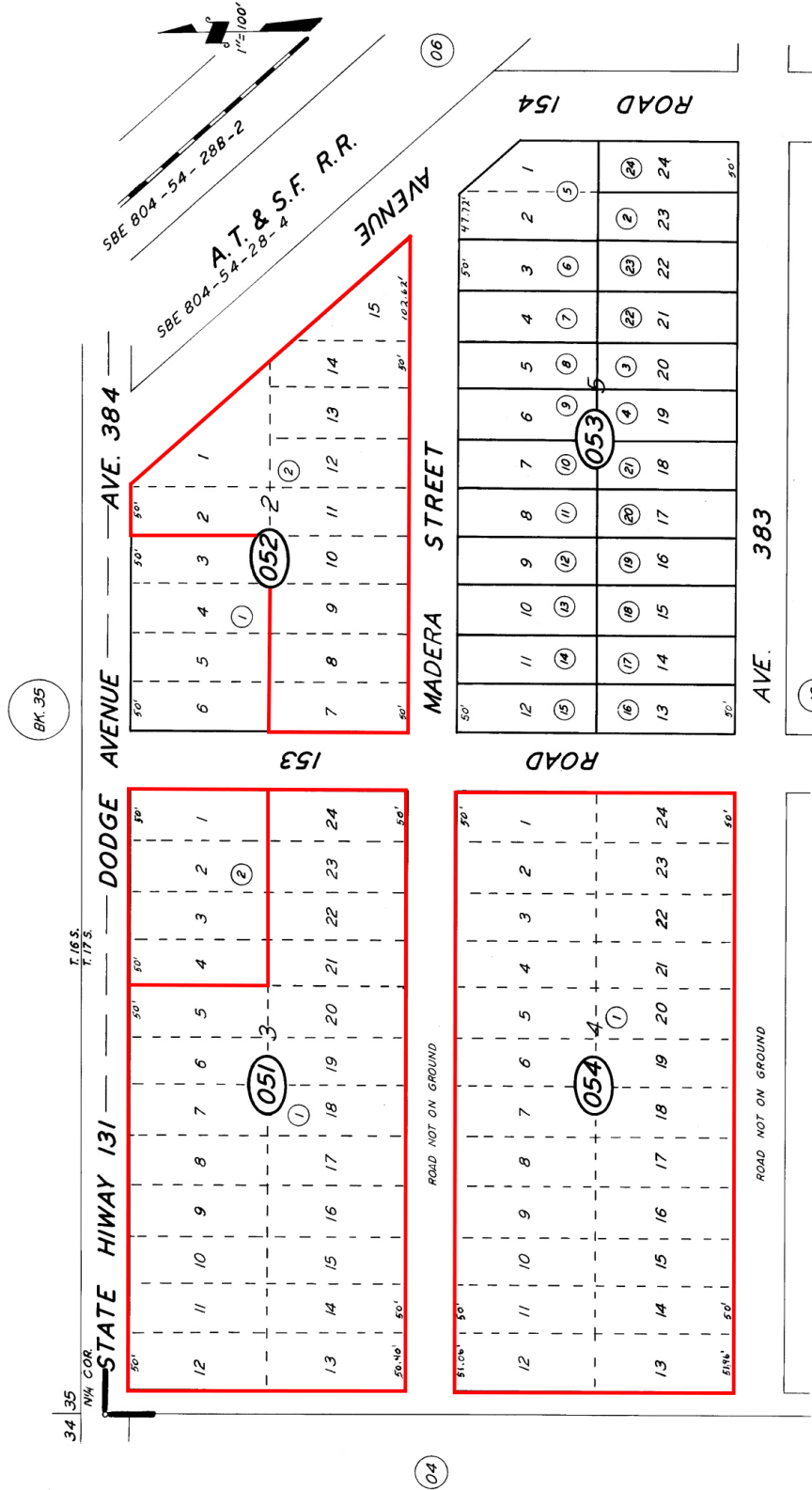
NOTE — ASSESSOR'S BLOCK NUMBERS SHOWN IN ELLIPSES  
ASSESSOR'S PARCEL NUMBERS SHOWN IN CIRCLES



50-05

TAX CODE AREA  
138-001

POR. NE 1/4 SEC. 2, T.17S., R. 25 E., M.D.B. & M.



POR. SEVILLE TOWNSITE, RM. 15-4  
RECORD OF SURVEY, L.S. 11-41 (NE 1/4 SEC.)

ASSESSOR'S MAPS BK. 50, PG. 05  
COUNTY OF TULARE, CALIF.

NOTE — ASSESSOR'S BLOCK NUMBERS SHOWN IN ELLIPSES  
ASSESSOR'S PARCEL NUMBERS SHOWN IN CIRCLES



50-04

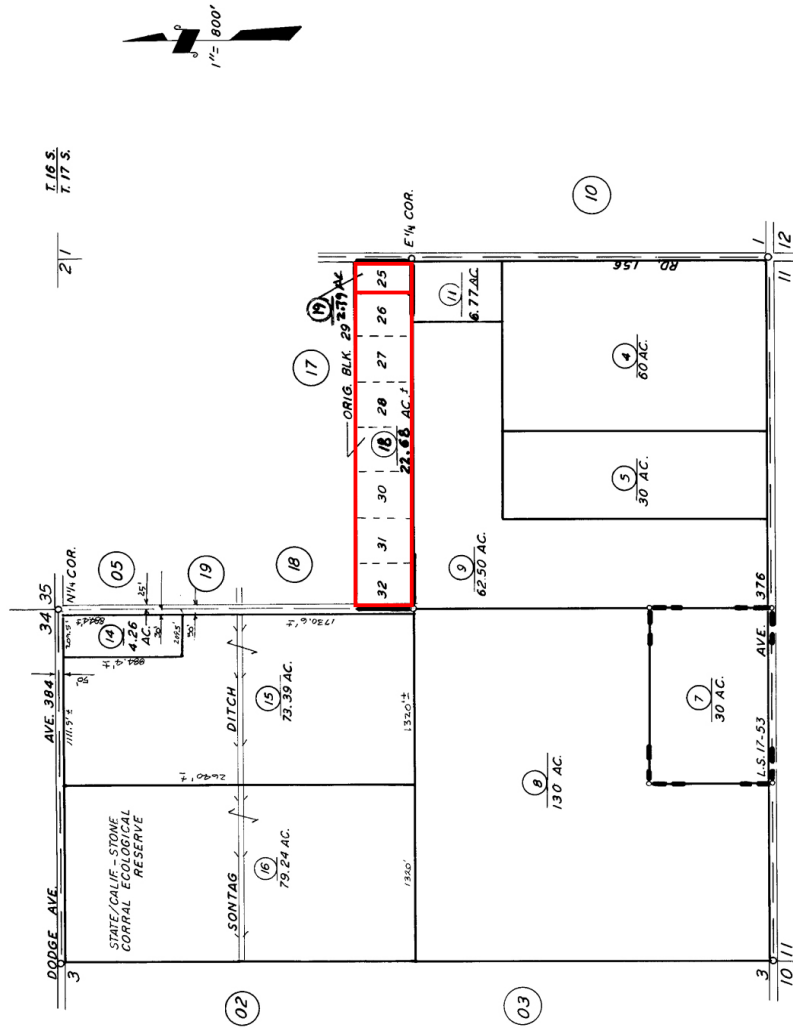
TAX CODE AREA  
138-005  
68-029

SEC. 2, EXCEPT POR. NE $\frac{1}{4}$  T.17S., R.25E., M.D.B.&M.

**DISCLAIMER**  
THIS MAP IS PREPARED FOR LOCAL  
PROPERTY ASSESSMENT PURPOSES  
ONLY. THE PARCELS SHOWN HEREON  
MAY NOT COMPLY WITH STATE AND  
FEDERAL REQUIREMENTS AND  
LIABILITY IS ASSURED FOR THE USE  
OF THE INFORMATION HEREON.

REVISED: 08/01/2012  
REASON: REMAP 4N/017  
CAD TECH: JLC

BK. 35



RECORD OF SURVEY L.S. 17-53  
POR. SEVILLE TOWNSITE, R.M. 15-4  
BLOCKS 25-32

ASSESSOR'S MAPS BK. 050, PG. 04  
COUNTY OF TULARE, CALIF.

NOTE — ASSESSOR'S BLOCK NUMBERS SHOWN IN ELIPSES  
ASSESSOR'S PARCEL NUMBERS SHOWN IN CIRCLES



