

# FOR SALE // SPECIAL USE



**SIGNATURE  
ASSOCIATES**  
KNOW SIGNATURE | KNOW RESULTS



## 20000 W. NINE MILE ROAD SOUTHFIELD, MICHIGAN

**273,144 SQ. FT. BUILDING  
LOCATED ON 110 ACRES**

**FORMERLY DUNS  
SCOTUS FRANCISCAN  
CATHOLIC COLLEGE**

**3,012 PARKING SPACES**

**EXCELLENT FREEWAY ACCESS**



For more information, please contact:

**JOHN BOYD**  
(248) 948 0102

**GARY STEPHENS**  
(248) 948 0104

**PAUL HOGE**  
(248) 948 0103

**SIGNATURE ASSOCIATES**  
One Towne Square, Suite 1200  
Southfield, MI 48076  
[www.signatureassociates.com](http://www.signatureassociates.com)

Information is subject to verification and no liability for errors or omissions is assumed. Price is subject to change and listing withdrawal.

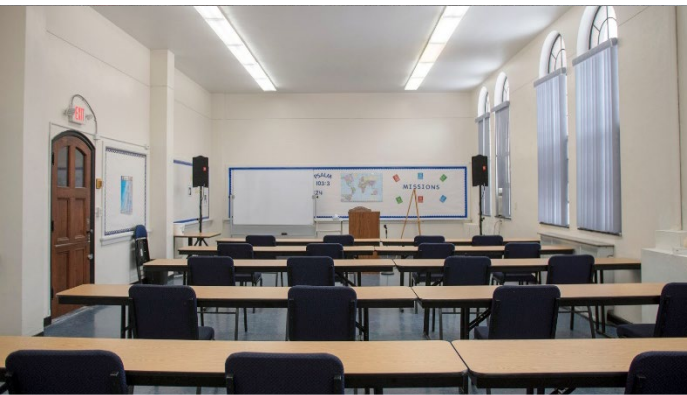


## PROPERTY FEATURES

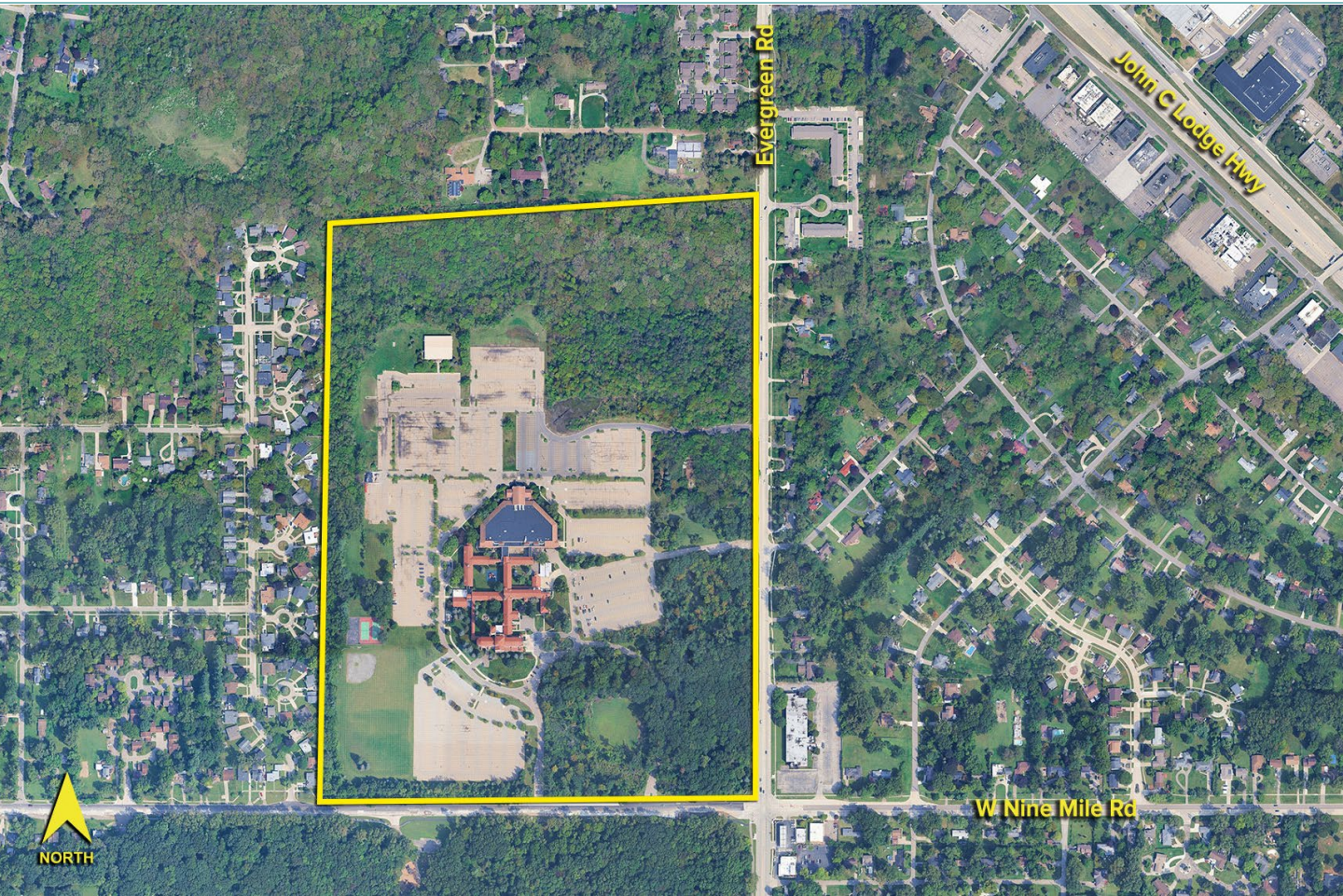
- 4,000 seat auditorium/sanctuary
- 1,100 seat chapel
- 3,012 car parking
- 1,800 sq. ft. maintenance building
- 14,400 sq. ft. athletic facility (2001)
- Classrooms, several large meeting rooms, and full kitchen











For more information, please contact:

**JOHN BOYD**

(248) 948 0102

[jboyd@signatureassociates.com](mailto:jboyd@signatureassociates.com)

**GARY STEPHENS**

(248) 948 0104

[gstephens@signatureassociates.com](mailto:gstephens@signatureassociates.com)

**PAUL HOGE**

(248) 948 0103

[paulhoge@signatureassociates.com](mailto:paulhoge@signatureassociates.com)



**SIGNATURE  
ASSOCIATES**

KNOW SIGNATURE | KNOW RESULTS