












37 NORTH BUSINESS CENTER

FOR LEASE 1635 E. 37TH ST. N., WICHITA, KS 67219

LEASE RATE	\$8.95/SF Plus CAM
CAM RATE	Contact Broker for Details
AVAILABLE SPACE	Suite 3: 3,200 SF
BUILDING SIZE	36,935 SF
LOT SIZE	79,089 SF (1.82 +/- AC.)
YEAR BUILT	1979
ZONING	General Industrial

PROPERTY HIGHLIGHTS

- Excellent highway access. Within 1 mile of I-135 & Hwy. K-96.
- Suite includes a 12'x12' ground level overhead door.
- 22' ceiling heights throughout.
- 3-phase power.
- 13 miles to Dwight D. Eisenhower Airport.

 8.3 miles	 11.3 miles	 5.5 miles
 0.6 miles	 2.3 miles	 5.5 miles
 10.4 miles	 0.8 miles	 1.2 miles



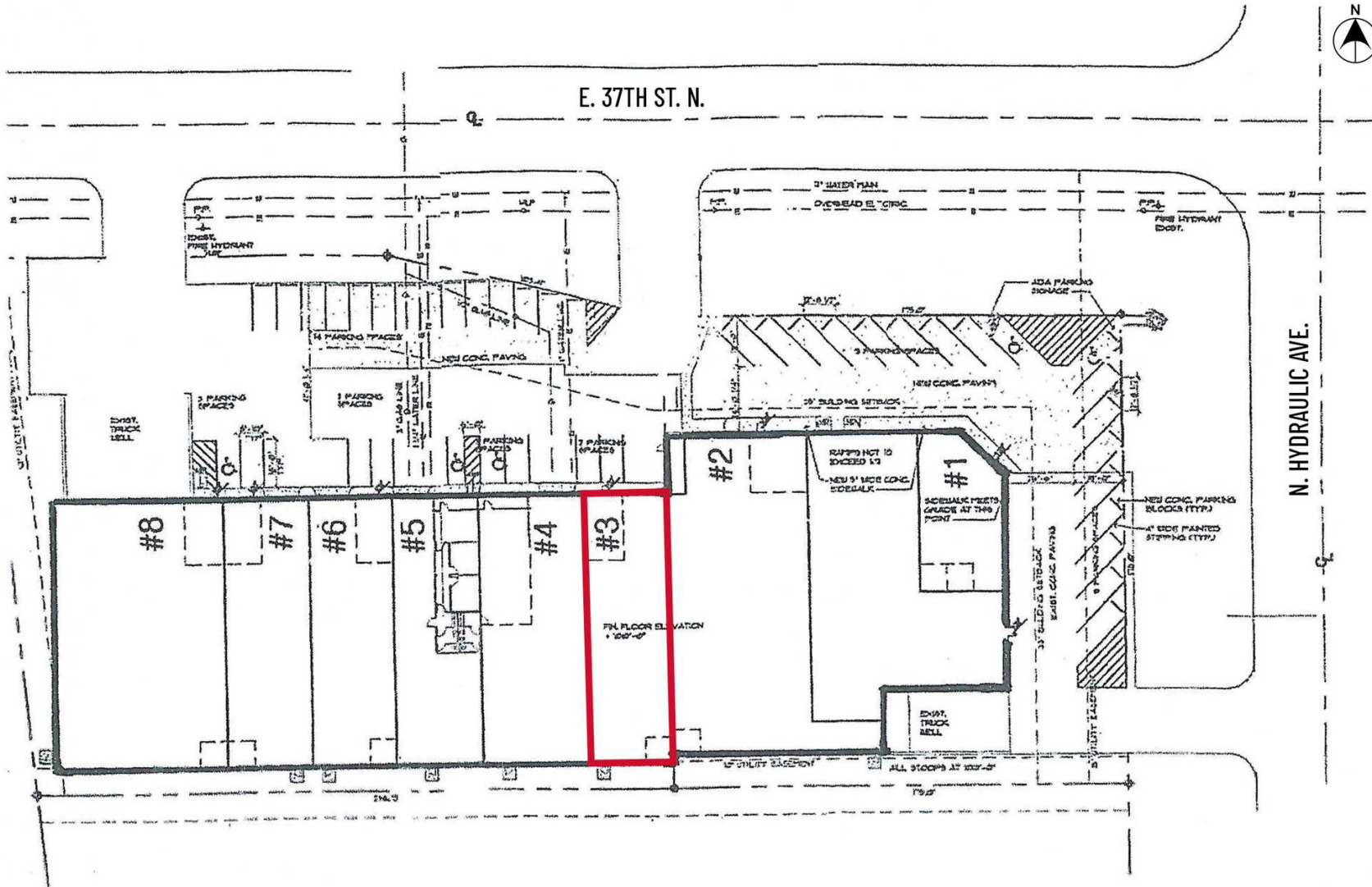
Ben Gartner, CCIM | 316.292.3967 | bgartner@weigand.com

Weigand Real Estate - Commercial
150 N. Market St., Wichita, KS 67202
WeigandCommercial.com

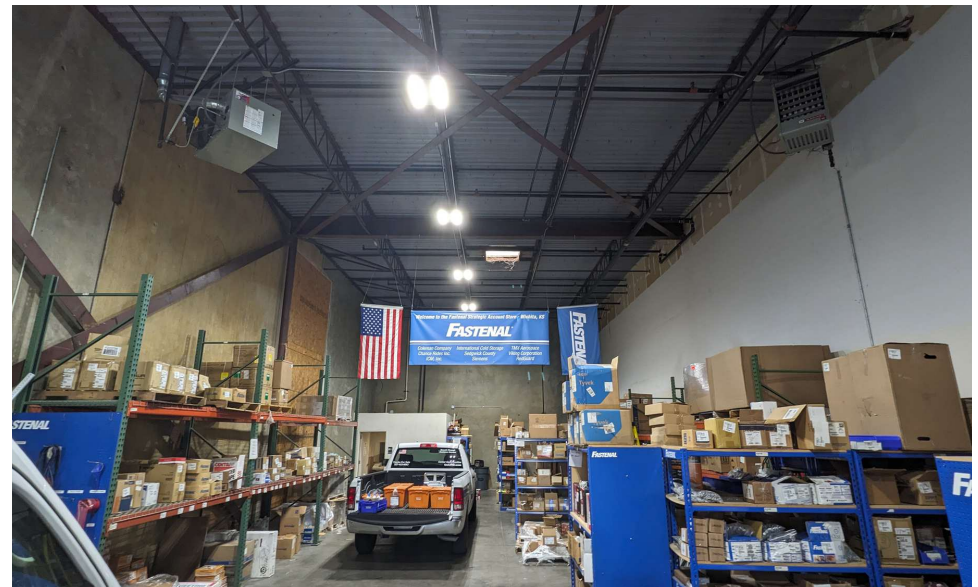
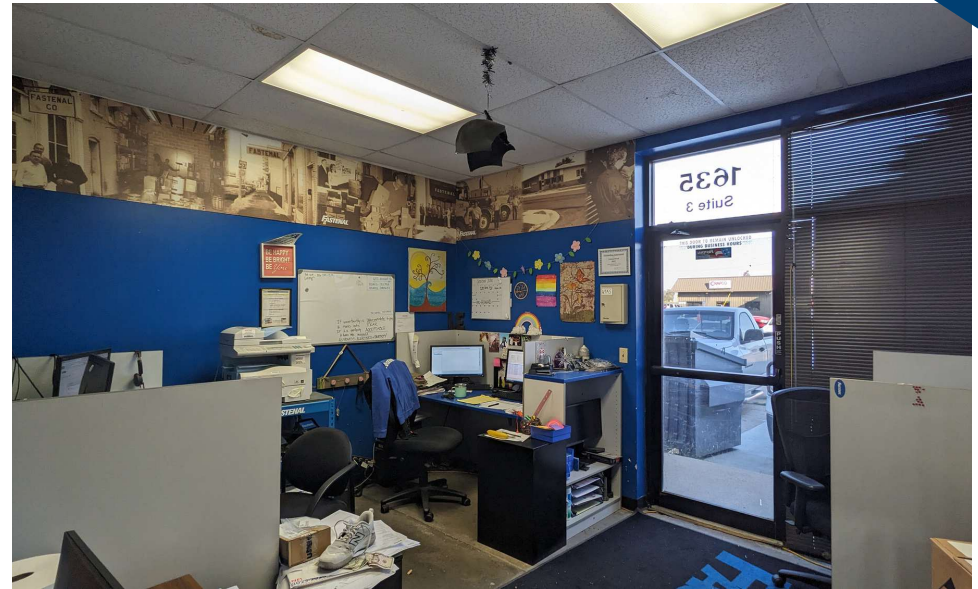
37 NORTH BUSINESS CENTER

FOR LEASE 1635 E. 37TH ST. N., WICHITA, KS 67219

SITE PLAN



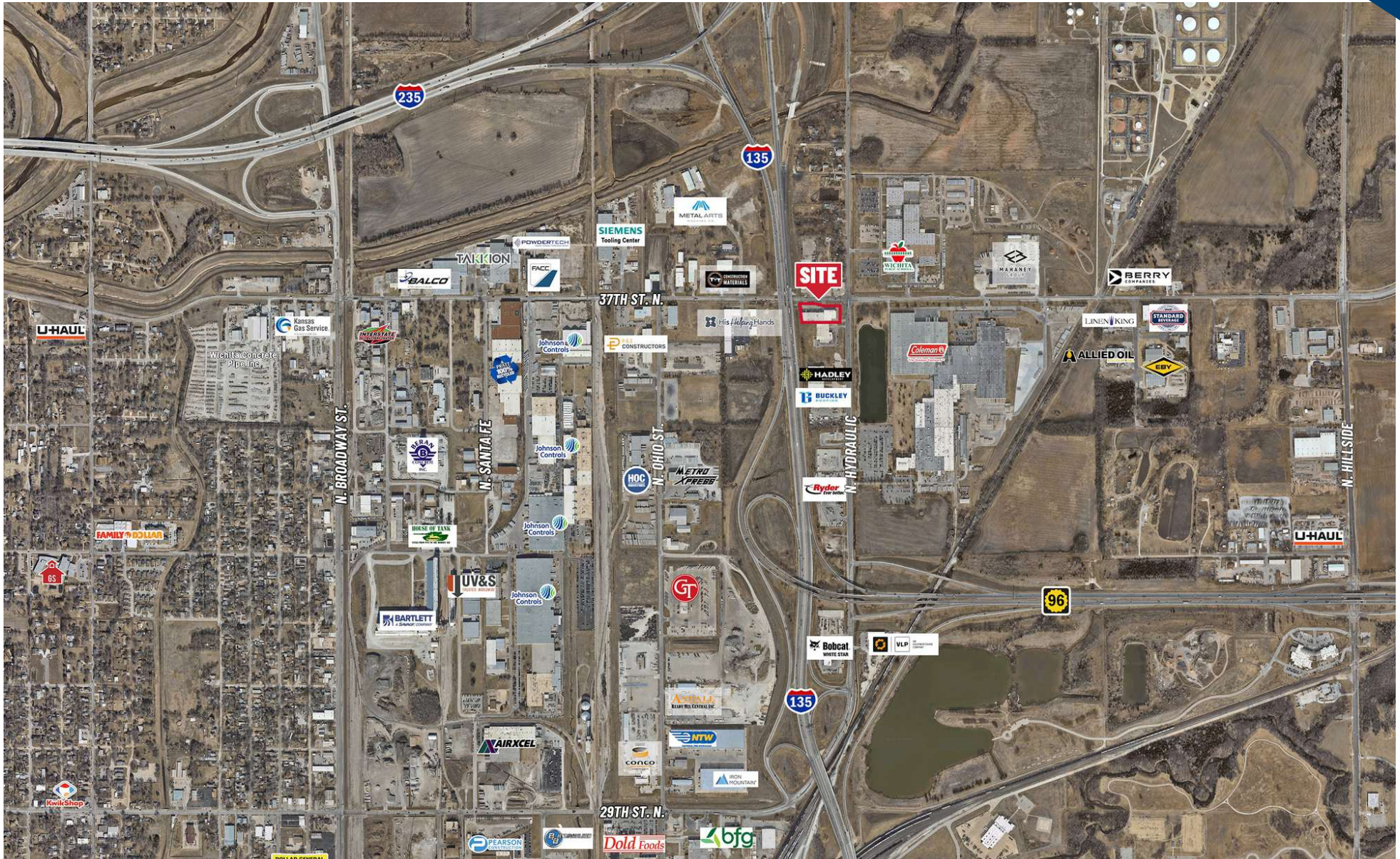
PROPERTY PHOTOS



37 NORTH BUSINESS CENTER

FOR LEASE 1635 E. 37TH ST. N., WICHITA, KS 67219

AERIAL VIEW



Ben Gartner, CCIM | 316.292.3967 | bgartner@weigand.com

Weigand Real Estate - Commercial
150 N. Market St., Wichita, KS 67202
WeigandCommercial.com