

FOR SALE/LEASE



WAREHOUSE/OFFICE BUILDING

7848 Barton Street | Lenexa, KS 66214



PROPERTY FEATURES

- 19,780 SF industrial building on 1.4 acre lot
- First class construction
- Excellent parking
- 2 Drive-in & 1 Dock high doors
- 95% HVAC throughout the building
- 1200 amps of power, 3 phase
- Sale price: \$2,400,000
- Lease rate: \$8.00/SF NNN

TODD WELTMER

tweltmer@Crossroads-KC.com

M (816) 448-8835

Crossroads Real Estate Group
O (816) 298-9998
6200 Mastin Street
Merriam, KS 66203



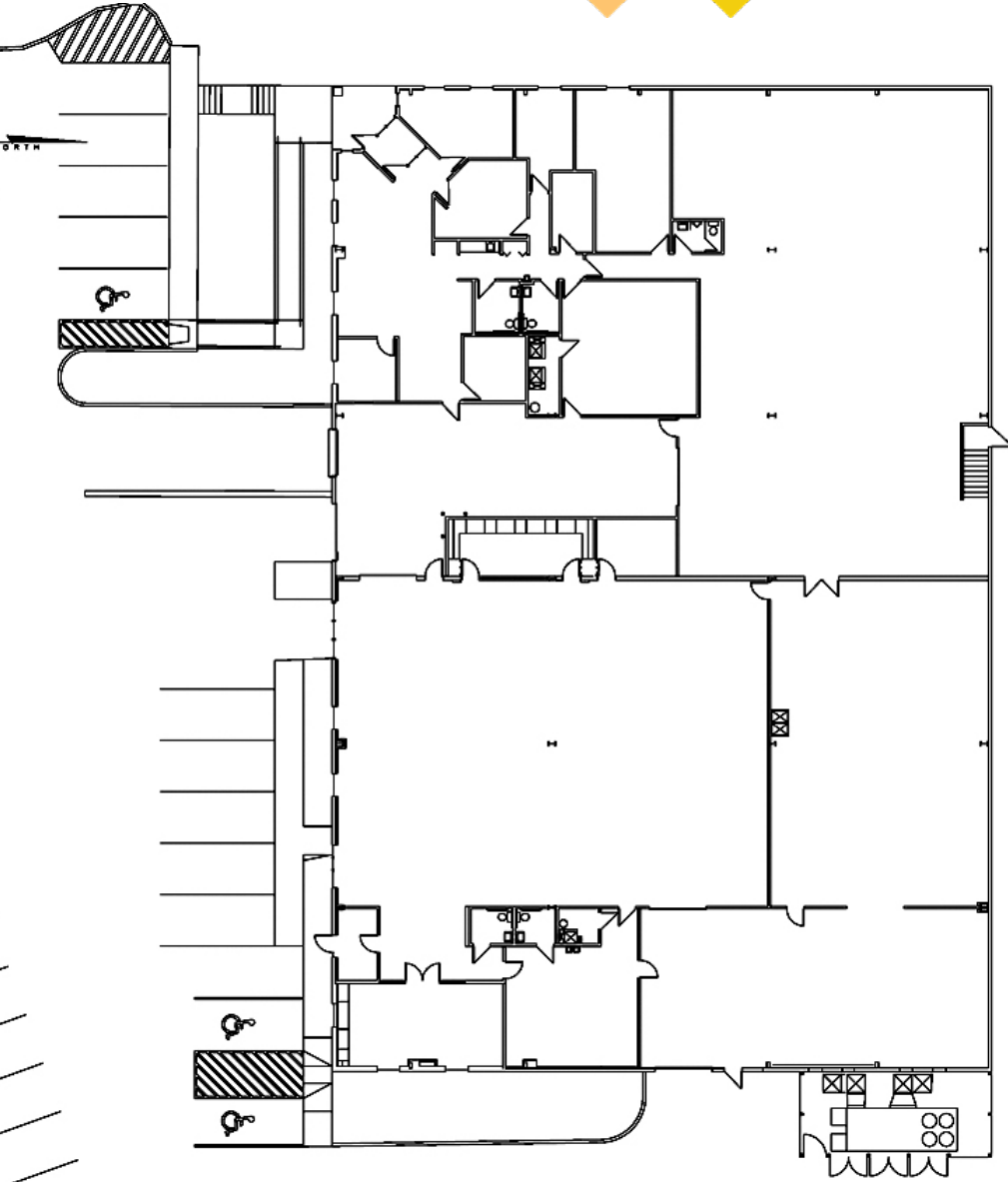
CROSSROADS
REAL ESTATE GROUP

FOR SALE/LEASE



WAREHOUSE/OFFICE BUILDING

7848 Barton Street | Lenexa, KS 66214



The information contained herein has been obtained through sources deemed reliable by Crossroads Real Estate Group, but cannot be guaranteed for its accuracy. We recommend to the buyer that any information, which is of special interest, should be obtained through independent verification. All measurements are approximate.

Crossroads Real Estate Group
O (816) 298-9998
6200 Mastin Street
Merriam, KS 66203



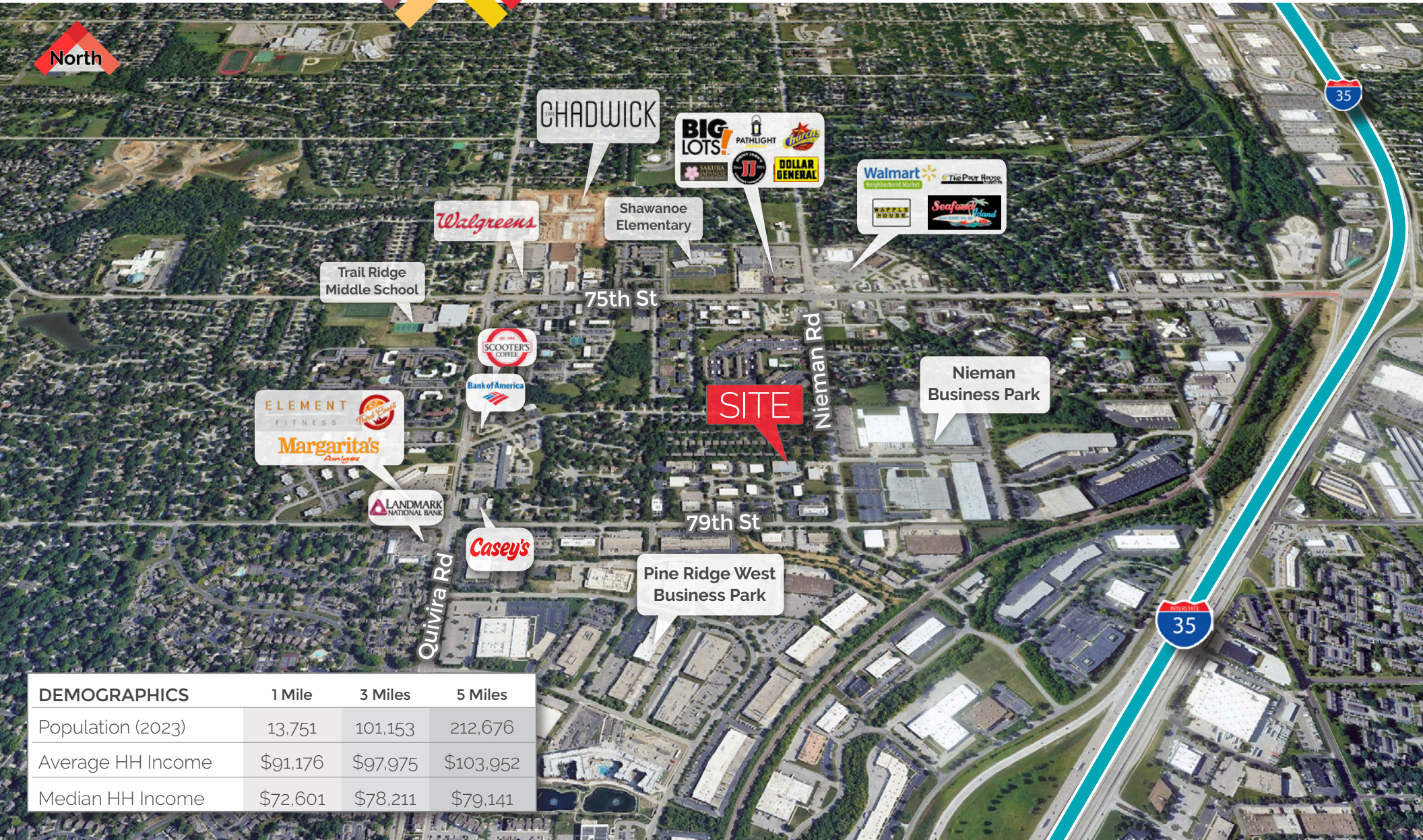
CROSSROADS
REAL ESTATE GROUP

FOR SALE/LEASE

WAREHOUSE/OFFICE BUILDING

7848 Barton Street | Lenexa, KS 66214

North



DEMOGRAPHICS	1 Mile	3 Miles	5 Miles
Population (2023)	13,751	101,153	212,676
Average HH Income	\$91,176	\$97,975	\$103,952
Median HH Income	\$72,601	\$78,211	\$79,141

TODD WELTMER

tweltmer@Crossroads-KC.com

M (816) 448-8835

Crossroads Real Estate Group
O (816) 298-9998
6200 Mastin Street
Merriam, KS 66203



CROSSROADS
REAL ESTATE GROUP