



BGE, Inc.
 2595 Dallas Parkway, Suite 101
 Frisco, TX 75034
 Tel: 972-464-4800 • www.bgeinc.com
 TBPE Registration No. F-1046
 Copyright 2020

DEVELOPER / OWNER

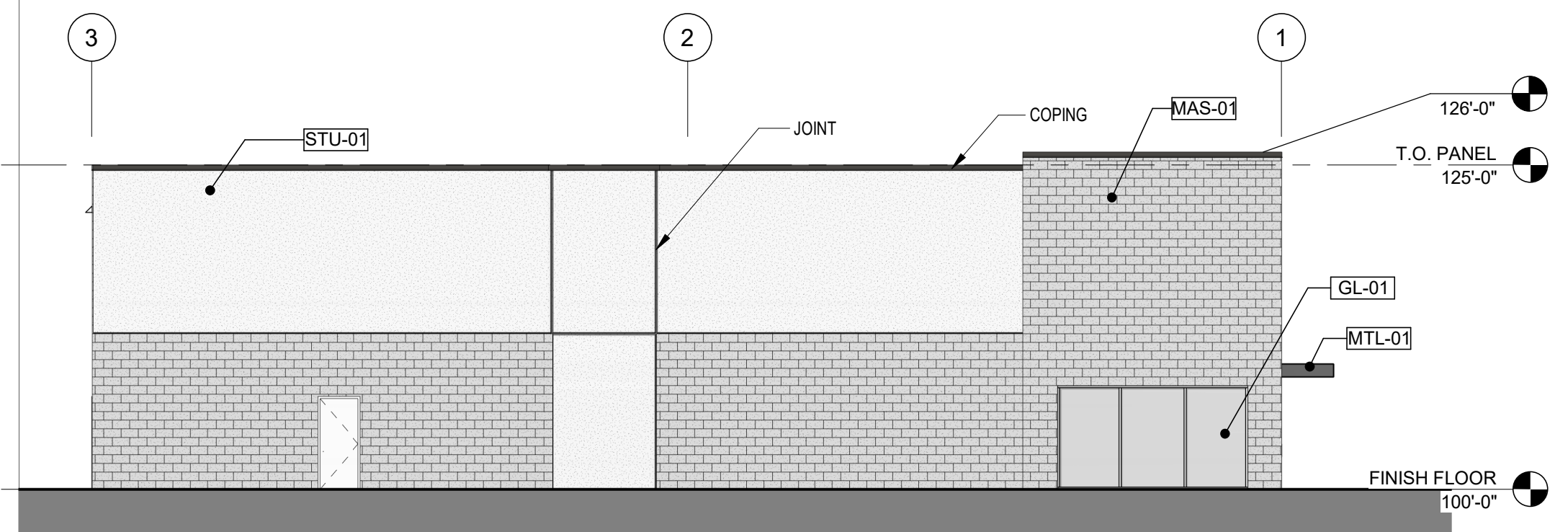
LONGBOW COMPANIES
 17120 DALLAS PARKWAY, SUITE 145
 DALLAS, TX 75248
 TEL: (214) 457 - 8198
 CONTACT: REID CALDWELL

ARCHITECT

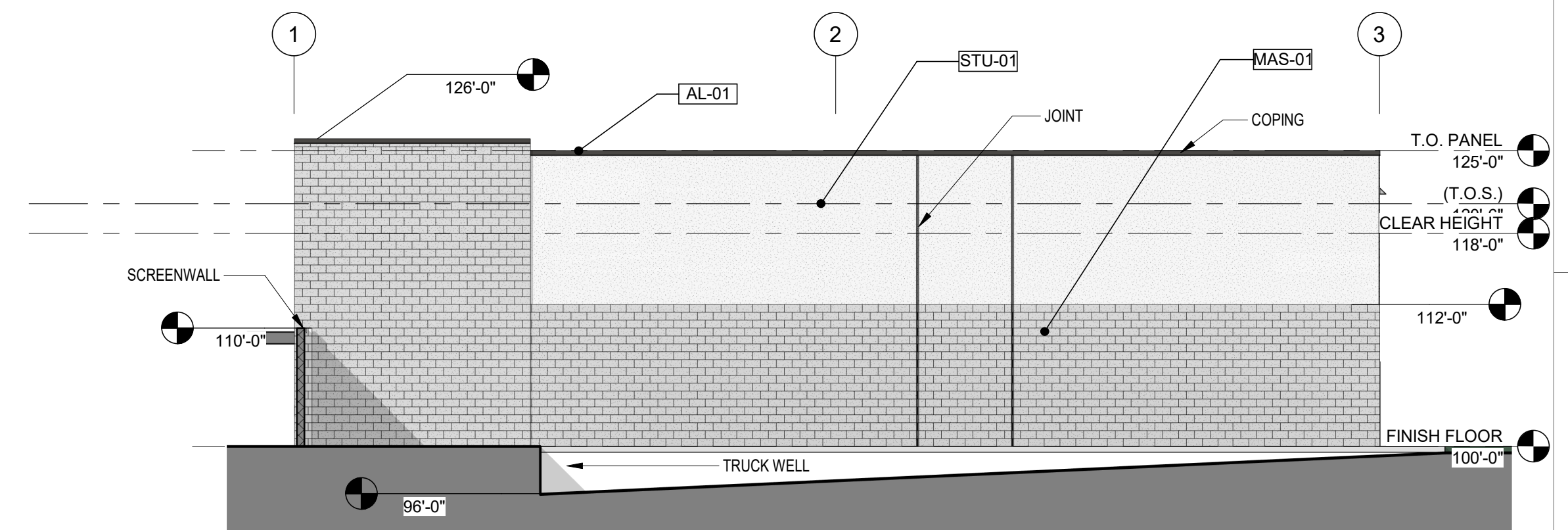
ALLIANCE ARCHITECTS, INC.
 1600 N. COLLINS BOULEVARD, SUITE
 1000
 RICHARDSON, TX 75080
 TEL: (972) 233 - 0400
 CONTACT: TOM MAXWELL

ALLEN FLEX CENTER
 TRACTS 6 & 22
 CITY OF ALLEN, COLLIN COUNTY, TEXAS

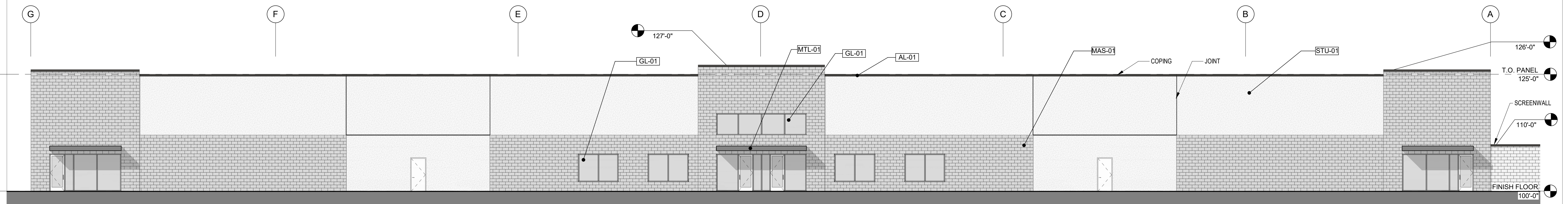
	MAS-01	MAS-02	STU-01
MATERIAL	SPLITFACE CMU	PAINTED CMU	STUCCO
COLOR	MEDIUM WARM GREY	LIGHT WARM GREY	WARM WHITE
NORTH	1,165 SF 53%	0 SF 0%	1,030 SF 47%
SOUTH	1,383 SF 59%	0 SF 0%	935 SF 41%
EAST	3,063 SF 45%	3,268 SF 48%	399 SF 7%
WEST	3,336 SF 46%	0 SF 0%	3807 SF 54%



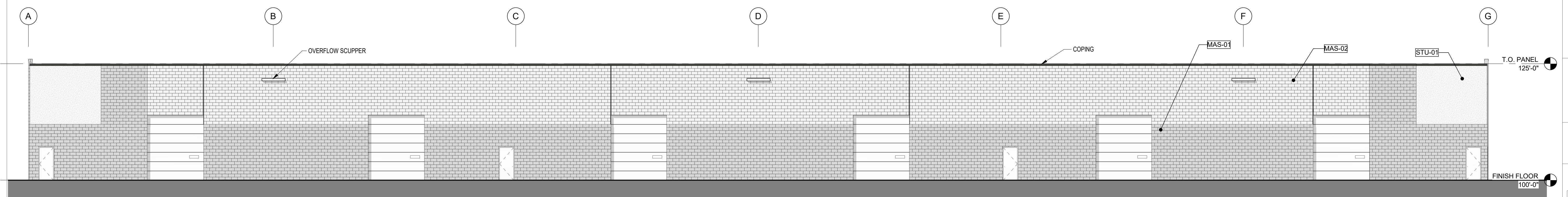
4 NORTH (HIGHTRAIL DR)
 Scale: 3/32" = 1'-0"



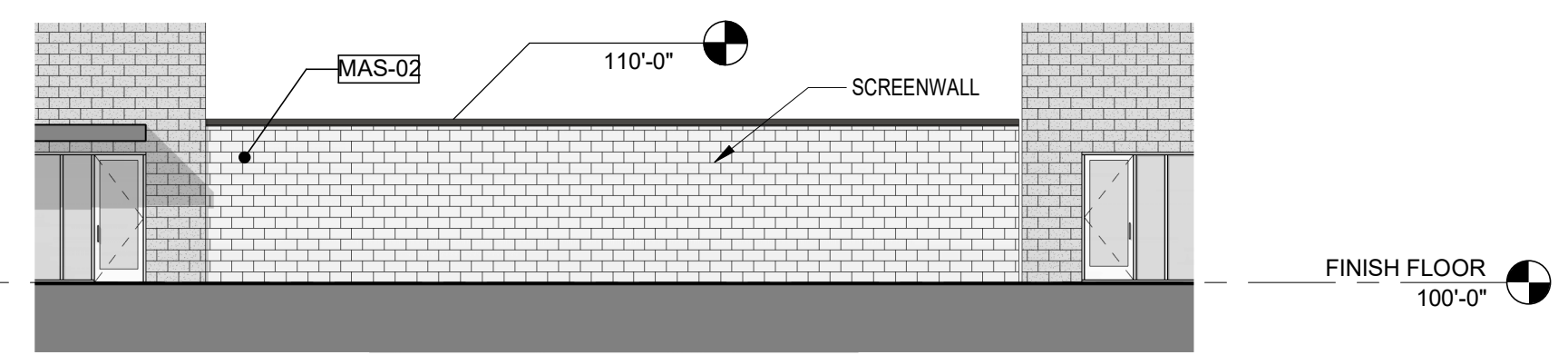
3 SOUTH
 Scale: 3/32" = 1'-0"



2 WEST (GREENVILLE AVE)
 Scale: 3/32" = 1'-0"



1 EAST
 Scale: 3/32" = 1'-0"



5 WEST (SCREEN WALL)
 Scale: 3/32" = 1'-0"

PD AMENDMENT CONCEPT PLAN

RUFUS SEWELL SURVEY
 TRACTS 6 AND 22
 7.46 ACRES
 CITY OF ALLEN, COLLIN COUNTY, TEXAS
 RUFUS SEWELL SURVEY ABSTRACT NO. A0875

OWNER LONGBOW COMPANIES 17120 DALLAS PARKWAY, SUITE 145 DALLAS, TEXAS 75248 TEL: (214) 457 - 8198 CONTACT: REID CALDWELL	APPLICANT LONGBOW COMPANIES 17120 DALLAS PARKWAY, SUITE 145 DALLAS, TEXAS 75248 TEL: (214) 457 - 8198 CONTACT: REID CALDWELL	ENGINEER BGE, INC. 2595 DALLAS PKWY, SUITE 101 FRISCO, TEXAS 75034 TEL: (972) 464 - 4852 CONTACT: JOHN HALE
--	--	---

DATE PREPARED: 10/14/2022

!CAUTION !!
 Contractor to Verify exact location & Depth of
 Exist Facilities Prior to any Construction
 Activities

CAUTION !!!
 CONTACT: 1-800-DIG-TESS
 48 HOURS PRIOR TO CONSTRUCTION

REVISIONS		
REV NO.	DATE	DESCRIPTION

CHECKED BY:
 DESIGNED BY:
 PROJECT NUMBER: 10783-00

FP-1
 FACADE PLAN - BLDG 1