

# Virgil L. Anderson Industrial Park

1400 Virgil Anderson Drive  
Drumright, OK 74030  
[www.cbre.com](http://www.cbre.com)

## Property Features

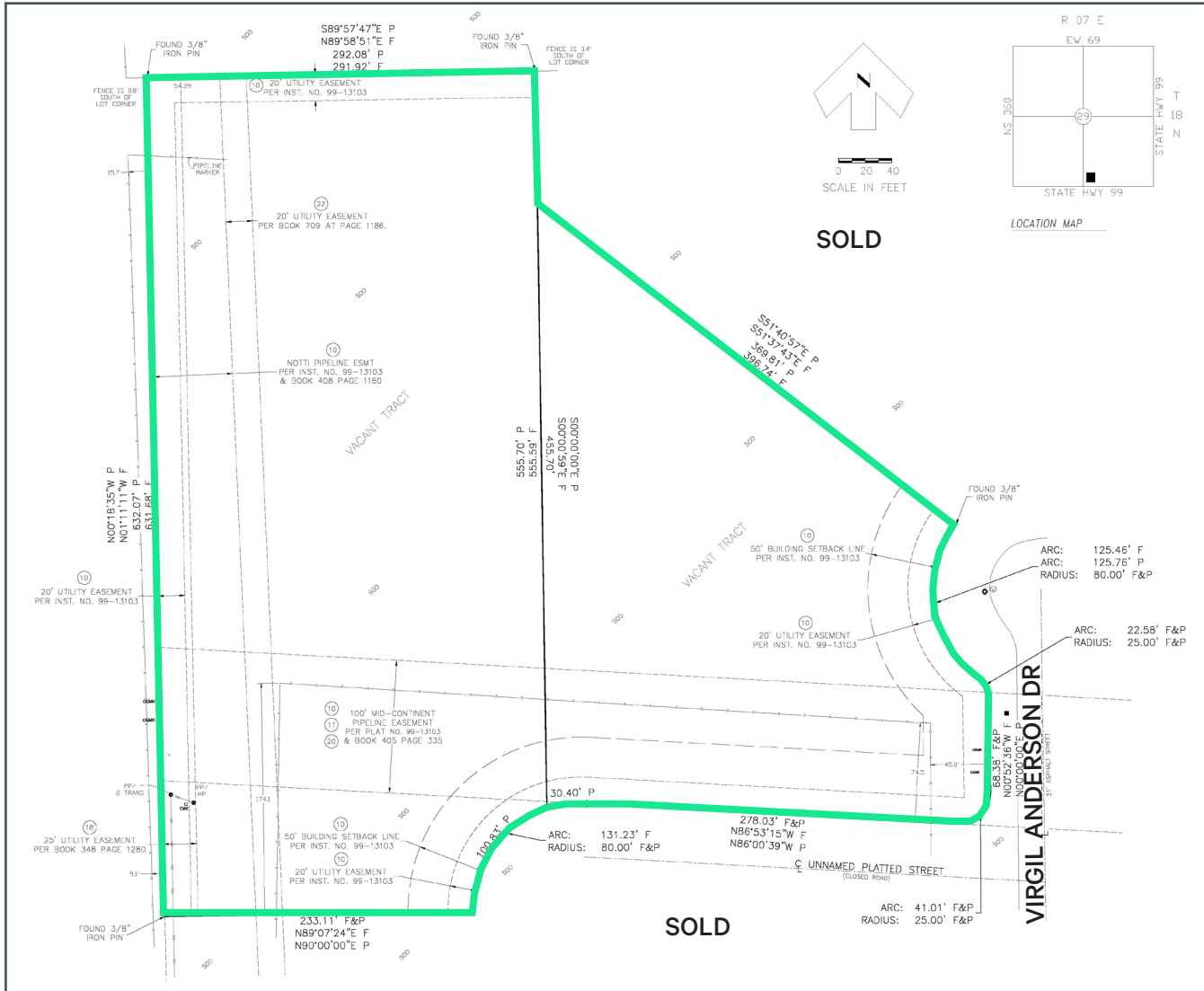
- + 6.58± Total Acres\*
- + 2 Lots to be Sold Together
- + Platted Sites
- + Utilities Available
- + Located Northeast of Drumright
- + 35 Miles to Tulsa
- + Fairly Level Topography
- + Industrial Park Location

\*Source: Survey

## Industrial Land



## Survey



## Contact Us

### Dwayne Flynn, SIOR, CCIM

Senior Vice President  
+1 918 392 7249  
dwayne.flynn@cbre.com

### Ryan Shaffer, SIOR, CCIM

First Vice President  
+1 918 392 7203  
ryan.shaffer@cbre.com

© 2026 CBRE, Inc. All rights reserved. This information has been obtained from sources believed reliable, but has not been verified for accuracy or completeness. You should conduct a careful, independent investigation of the property and verify all information. Any reliance on this information is solely at your own risk. CBRE and the CBRE logo are service marks of CBRE, Inc. All other marks displayed on this document are the property of their respective owners, and the use of such logos does not imply any affiliation with or endorsement of CBRE. Photos herein are the property of their respective owners. Use of these images without the express written consent of the owner is prohibited.