



For Lease

1496 Rupert Street

North Vancouver

4,765 sq.ft. of Industrial Space

BABYCH GROUP
COMMERCIAL

1496 Rupert Street
North Vancouver

Opportunity

This property is located just north of Main Street on the corner of Mountain Highway and Rupert Street. Close proximity to the Iron Workers Memorial Bridge and the Phibbs Exchange Bus Loop. Amenities nearby include Canadian Tire, MEC and Park and Tilford Shopping Centre along Brooksbank Avenue.

Property Details

Building Size:

Main Floor: 2,937 sq.ft.

Second Floor Office: 1,828 sq.ft.

Total Unit Size : 4,765 sq.ft.

Zoning:

CD8

Basic Rent:

\$24.00 per sq.ft.

Additional Rent:

\$10.00 per sq.ft.

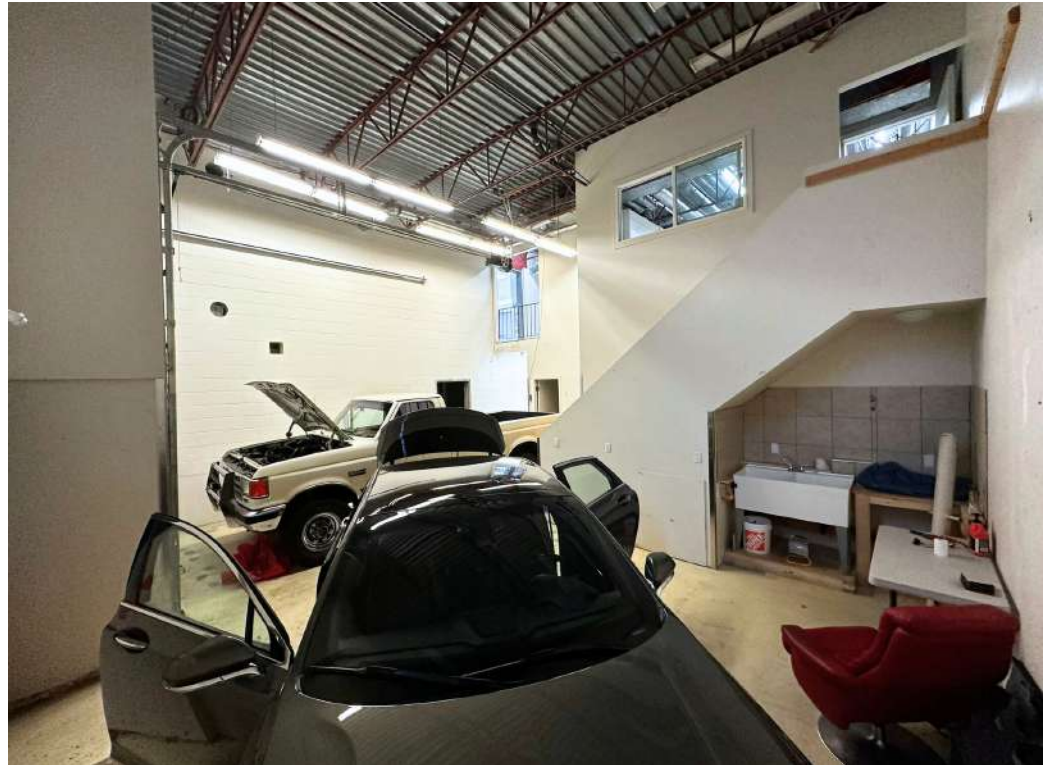
Parking Spaces:

6 spaces included

Building Features

- High ceiling warehouse
- Grade level loading door
- Large mezzanine space
- Parking area at front and rear
- Showroom
- 2 Washrooms

Industrial Building | For Lease



1496 Rupert Street
North Vancouver

Nearby Amenities

- Canadian Tire
- Park & Tilford Shopping Centre
- Phibbs Exchange
- McDonald's Restaurant
- MEC
- Mark's Work Wearhouse
- Whitespot Restaurant
- Rona
- Bank of Montreal
- Tim Hortons
- Wildeye Brewing
- Winners

Industrial Building | For Lease



Location



Contact Agents

Ross Forman
Personal Real Estate Corporation
Principal | Advisor
ross@formanpilkington.com

Jeff Pilkington
Personal Real Estate Corporation
Principal | Advisor
jeff@formanpilkington.com



Babych Group Realty Vancouver Ltd.
201, 1 Lonsdale Avenue
North Vancouver, BC V7M 2E4
604-980-3003

www.formanpilkington.com

