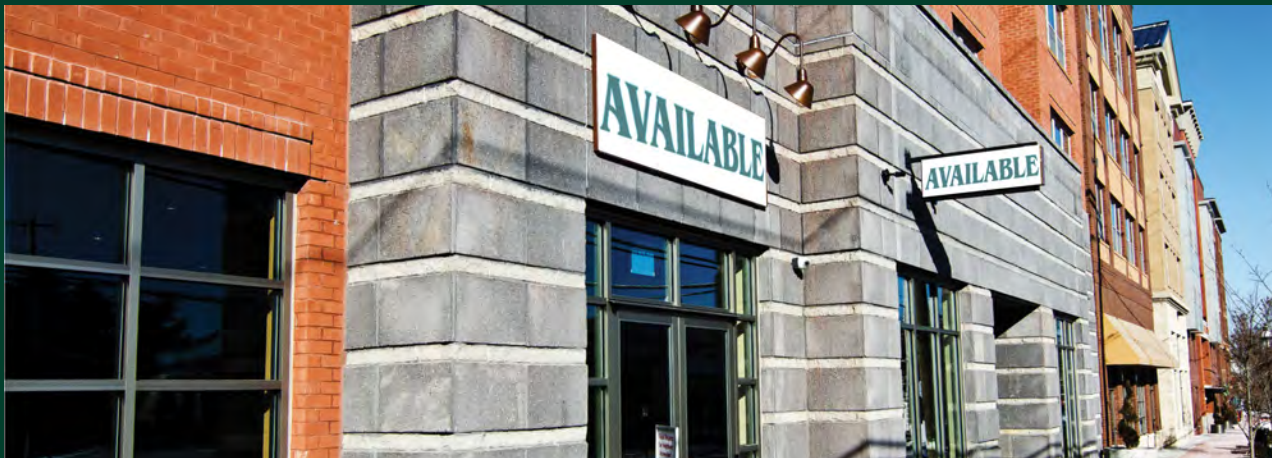


Eastside Flats

Malvern, Pennsylvania

335 East King Street
Chester County

±1,162 SF & ±4,339 SF Second Generation Restaurant Space Available
4,300 SF Space Being Divisible



Eastside Flats

335 East King Street | Malvern, Pennsylvania 19355

For Lease

Property Details

Join: Malvern Buttery, Golftec, Engel & Volkers & Louella

Eastside Flats is a mixed use development in Chester County, Pennsylvania and is smartly located just three blocks from the Malvern Train Station connecting its residents and neighbors into Philadelphia. Eastside Flats consists of not only great incomes, but a great daytime population with companies such as Vanguard and Paoli hospital just minutes away.



15 Minute Drive
178k+ Employees



10 Minute Drive - 74.1%Population
Bach/Grad/Prof Degree



.24 Miles From
Septa Train Station



3 Miles - \$208,370
Average Household Income






5 Miles - 65,607
Daytime Population

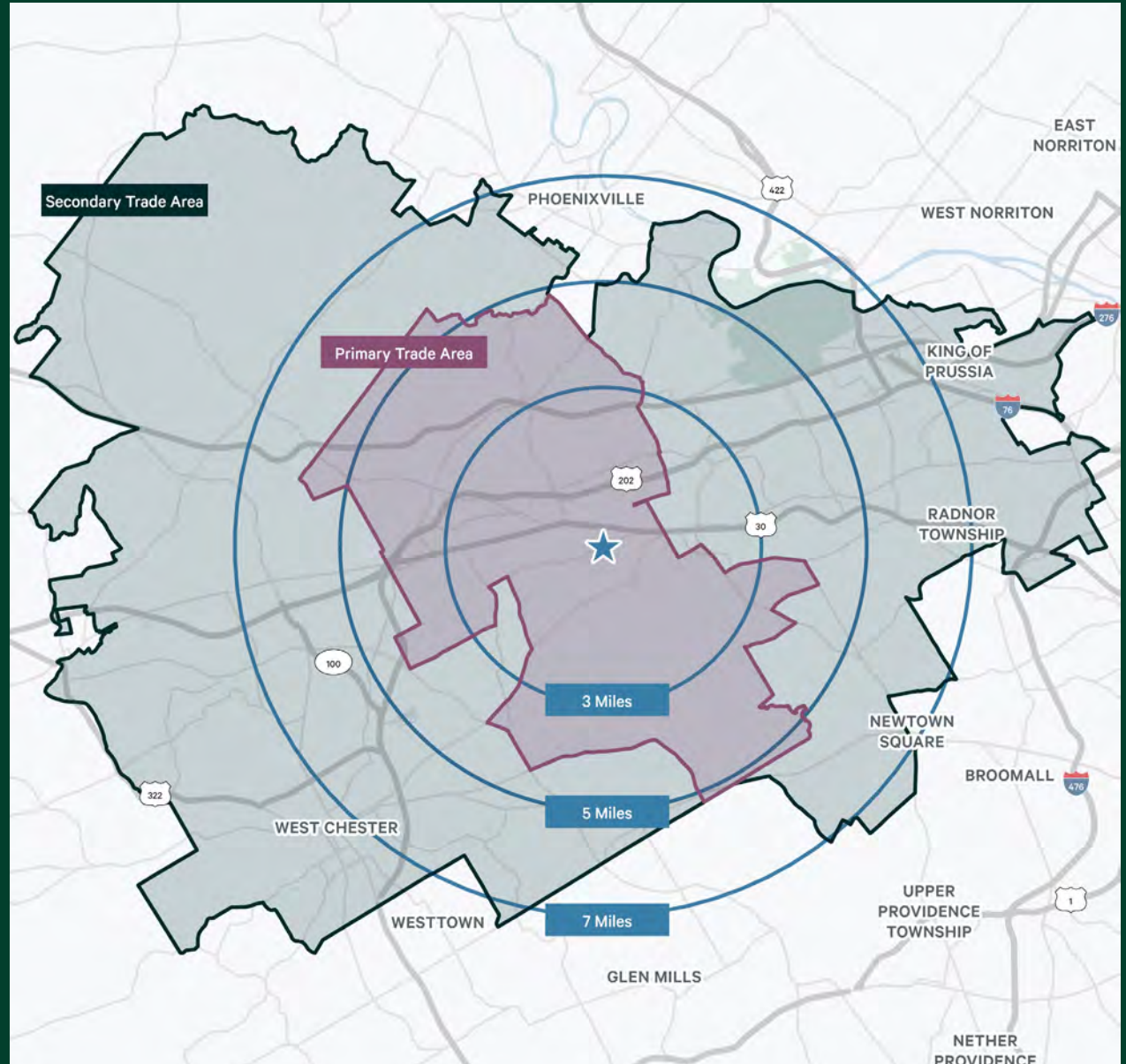


Mobile Data Trade Area Overview



Demographics

	 POPULATION	 DAYTIME POPULATION	 MEDIAN HOUSEHOLD INCOME
PRIMARY TRADE AREA	41,408	67,707	\$161,049
SECONDARY TRADE AREA	284,236	387,973	\$139,922
3 MILES	35,323	65,607	\$151,000
5 MILES	35,323	65,607	\$151,000
7 MILES	212,465	284,330	\$134,591



Eastside Flats

335 East King Street | Malvern, Pennsylvania 19353

For Lease

Property Location

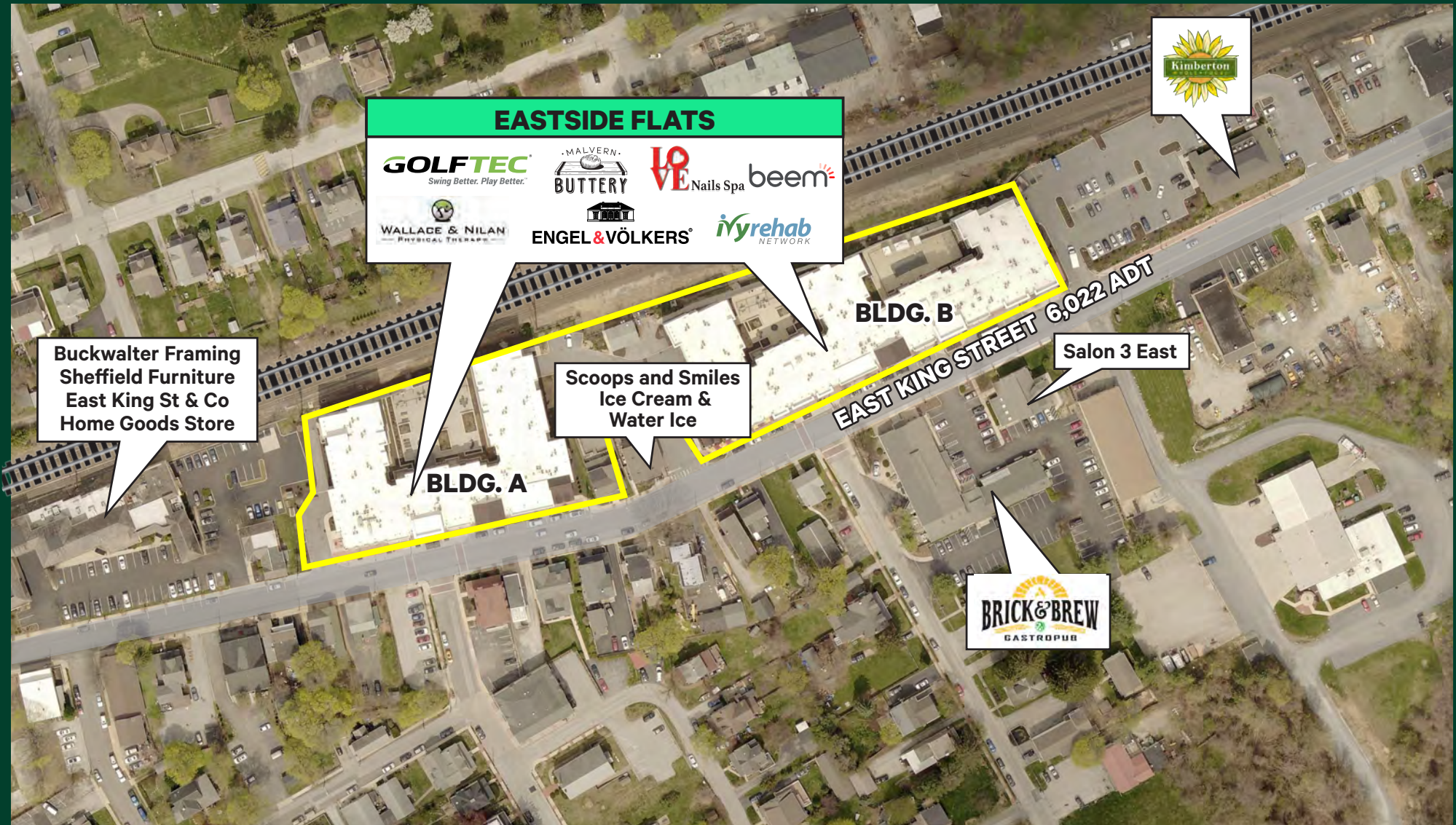


Eastside Flats

335 East King Street | Malvern, Pennsylvania 19355

For Lease

Property Location



Eastside Flats Leasing Plan

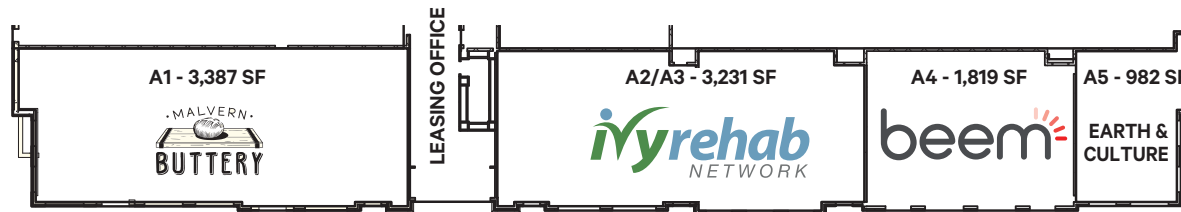
±5,501 SF Available



**Click Here To View Second
Generation Resturant 4,339
SF Space Video**

 NEGOTIATING LOI	 NEGOTIATING LEASE
 AVAILABLE	 SIGNED LEASE

BUILDING A



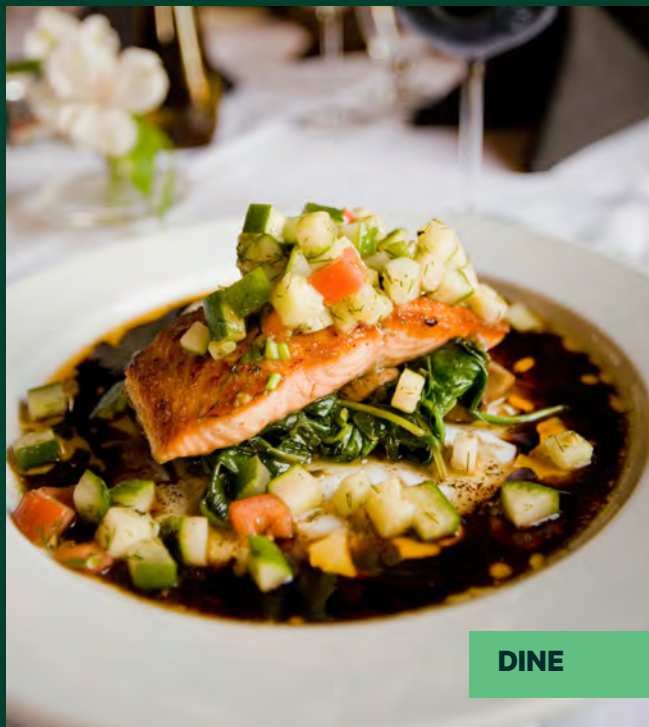
BUILDING B



Eastside Flats

335 East King Street | Malvern, Pennsylvania 19355

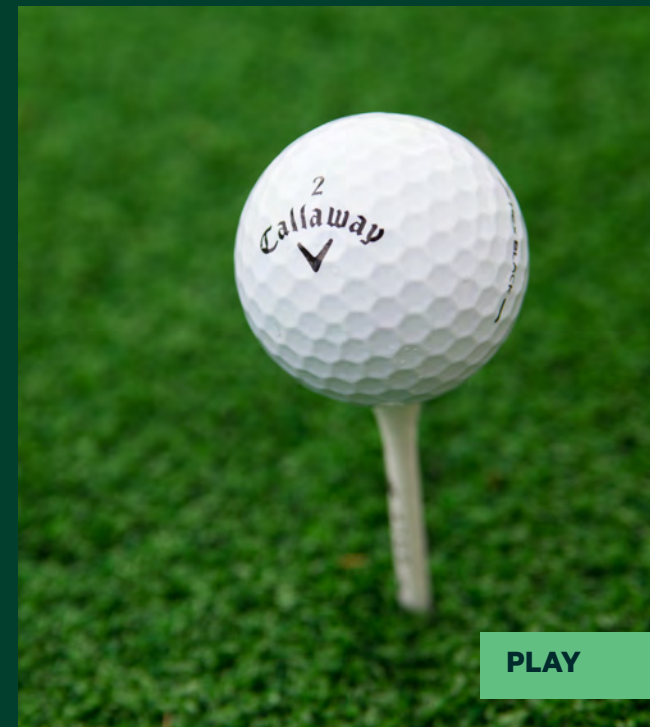
For Lease



DINE



SHOP



PLAY

Contact Us

Ken Bleznak

Executive Vice President
Retail
+1 610 727 5962
ken.bleznak@cbre.com
Licensed: DE, PA
Licensed Salesperson: NJ

John Krause

Senior Vice President
Retail
+1 484 567 2830
john.krause@cbre.com
Licensed: PA
Licensed Salesperson: NJ

Georgia Powell

Associate
Retail
+1 610 386 6094
georgia.powell@cbre.com
Licensed: PA

CBRE, Inc.

555 E. Lancaster Ave., Suite 120
Radnor, PA 19087
T +1 610 834 8000
F +1 610 834 1793
Licensed Real Estate Broker

© 2025 CBRE, Inc. All rights reserved. This information has been obtained from sources believed reliable, but has not been verified for accuracy or completeness. You should conduct a careful, independent investigation of the property and verify all information. Any reliance on this information is solely at your own risk. CBRE and the CBRE logo are service marks of CBRE, Inc. All other marks displayed on this document are the property of their respective owners, and the use of such logos does not imply any affiliation with or endorsement of CBRE. Photos herein are the property of their respective owners. Use of these images without the express written consent of the owner is prohibited.

www.cbre.us/retail

CBRE