

FOR LEASE

**1335 S HILL STREET
LOS ANGELES, CA 90015**

±3,280 SF
FLEX SPACE

For more information, please contact:

Daniel Park

(213) 446-0396

Danielpark777@hotmail.com

DRE# 01227056

PARK INDUSTRIAL
SPECIALIZING IN INDUSTRIAL REAL ESTATE SERVICES

Park Industrial Realty
800 McGarry St, 5th Floor
Los Angeles, CA 90021
Corporation DRE# 01983713

Available SF:	3,280 SF	<ul style="list-style-type: none">• Clean space in Downtown LA South Park close to LA Convention center, LA Live, Crypto.com Arena• 100% air conditioned throughout the entire space• Surrounded by brand new apartment buildings• Just south of Pico Blvd• Warehouse with 3 offices & 2 restrooms• Great for any retail, showroom, e-commerce
Office SF:	1,200 SF	
# Office:	3	
# Restroom:	2	
Year Built:	1994	
Ceiling Height:	10'	
Construction:	Concrete Block	
Zoning:	[HB2-G1-5] [CX2-FA] [CPIO-O]	
Lease Rate:	\$5,000 (\$1.52/SF) Gross	

All information has been furnished from sources which we deem reliable, but for which we assume no liability. All measurements are approximate. Broker/Owner do not warrant its accuracy. Buyer/Lessee must verify all information.

5134	25 SHEET	P. A. 26-19 5134-18 & 19	TRA 13264	REVISED 830517328-84 880323-88	88070506012001 20020912 2020030319011001-23	2021101373016001-23		SEARCH NO		OFFICE OF THE ASSESSOR COUNTY OF LOS ANGELES COPYRIGHT © 2002
------	-------------	--------------------------------	--------------	--------------------------------------	---	---------------------	--	-----------	--	---

2022

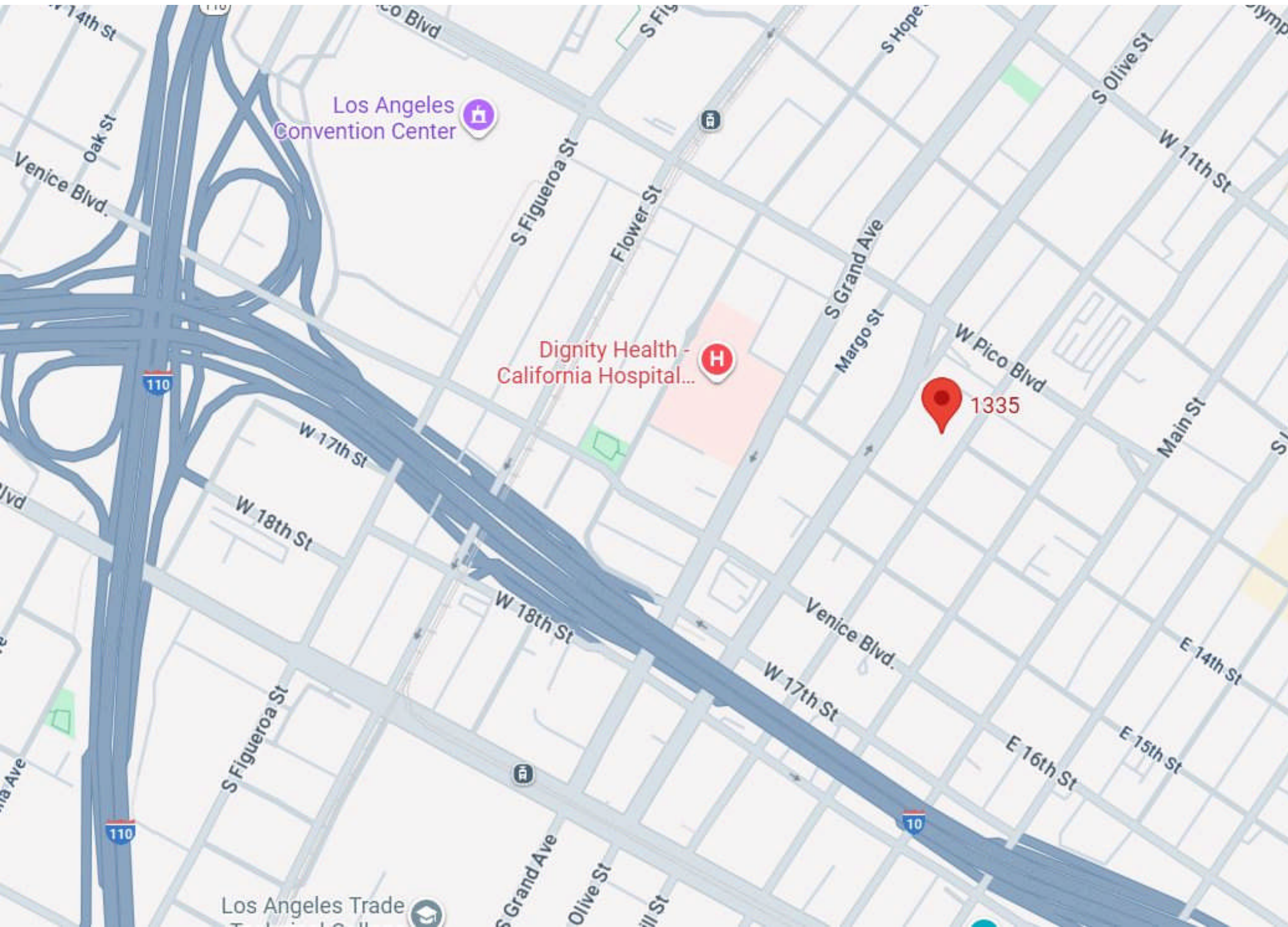


MAPPING AND GIS
SERVICES
SCALE 1" = 100'



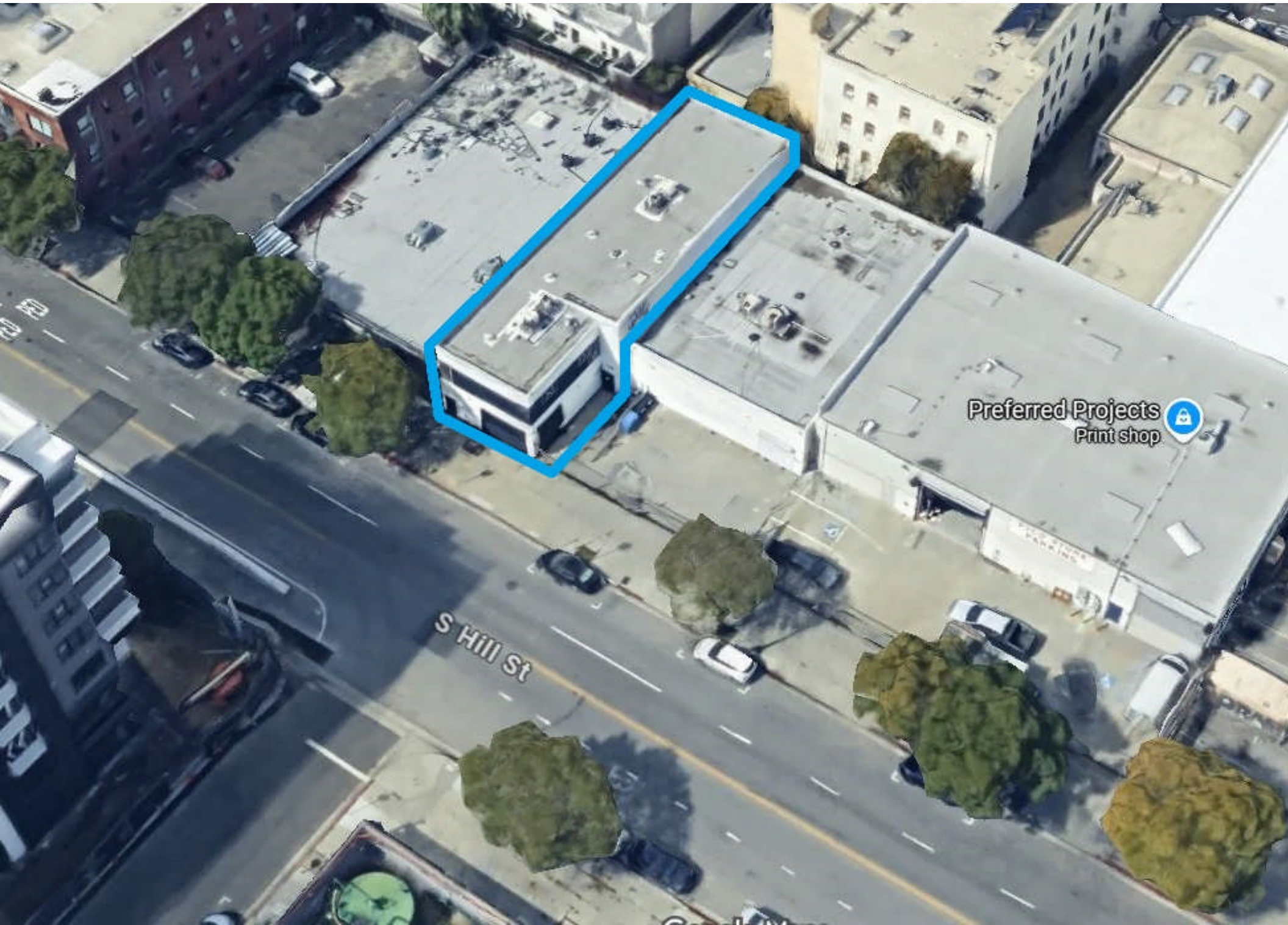
1335 S Hill Street

1335 S Hill Street



FOR LEASE | **±3,280 SF Flex Space**

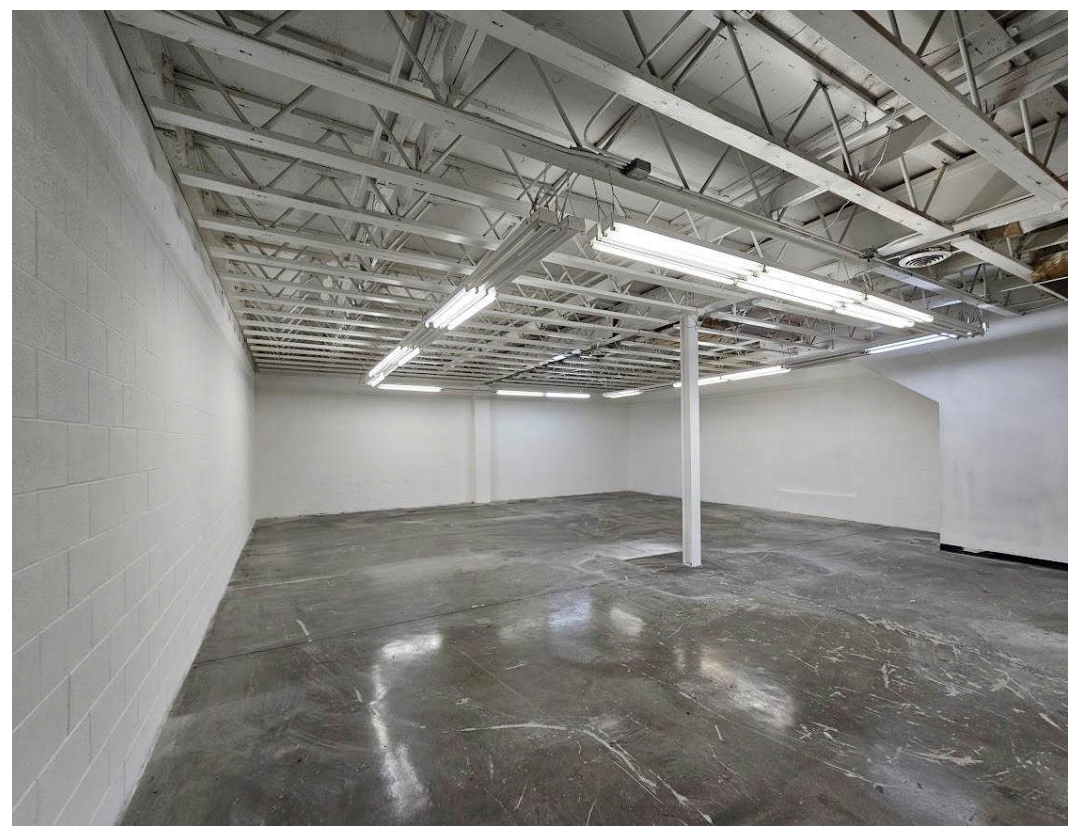
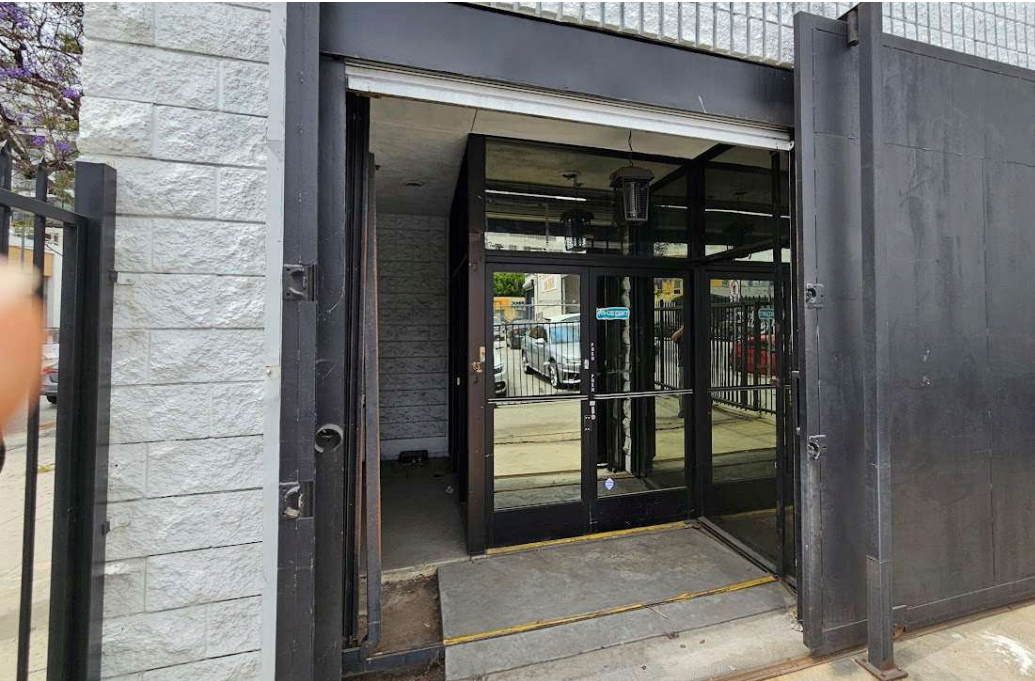
1335 S Hill Street



Preferred Projects
Print shop

FOR LEASE | ±3,280 SF Flex Space

1335 S Hill Street



FOR LEASE | ±3,280 SF Flex Space

1335 S Hill Street

