

OFFICE FOR
LEASE



WESTSHORE 500

CLASS A OFFICE

Starting from:

\$34.00
PSF NET

FOR LEASE | 500 N. West Shore Boulevard, Tampa | FL 33609

Location. Location. Location.

UNDER NEW OWNERSHIP

Contact us:

Claire Calzon
Executive Managing Director
+1 813 871 8500
claire.calzon@colliers.com

Joanne LeBlanc
Senior Associate
+1 813 871 8535
joanne.leblanc@colliers.com



Accelerating success.

WESTSHORE PLAZA

WORK, LIVE, PLAY
DEVELOPMENT COMING SOON!



WESTSHORE 500

WESTSHORE PLAZA

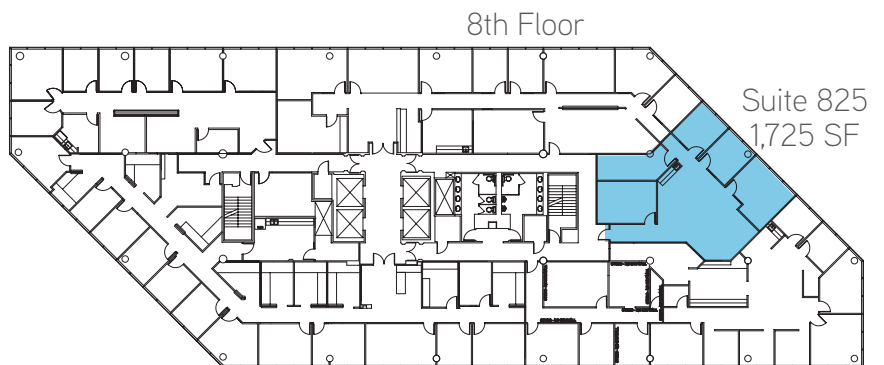
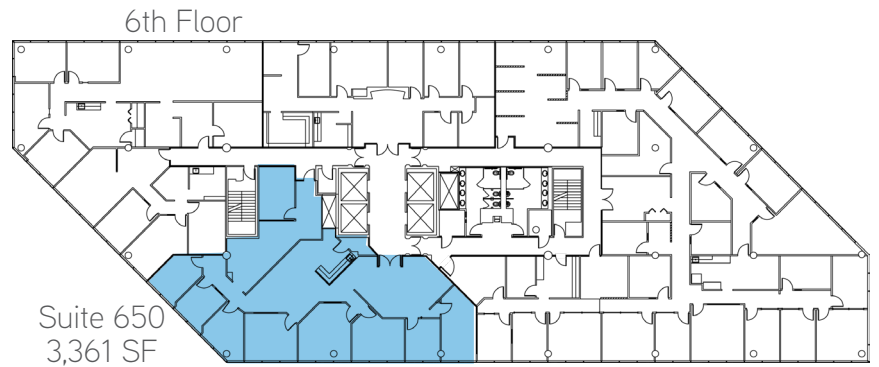
Development Concept*

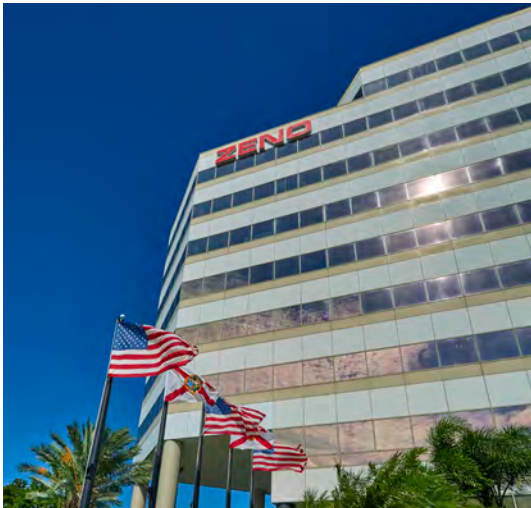


*Renderings by Washington Prime Group

WESTSHORE 500

Floor Plans - Available Office Space





WESTSHORE 500 is a 130,000 RSF Class-A, 10-story office building in the sought after Westshore area.

FEATURES

- Unique office building offering a covered and attached parking garage leading directly to the building with access to all floors
- Waterviews on upper floors
- Highly visible at the intersection of I-275 and West Shore Boulevard
- 200,000+ car per day on I-275
- Highly efficient floor plans for small to mid-sized tenants
- Adjacent to Westshore Plaza, a major regional mall
- In-house deli serving breakfast and lunch
- SunTrust Bank, ATM, and drive-thru located on property



CONVENIENTLY LOCATED SOUTH OF I-275

Area Demographics

(5 mile radius)



Population
675,000



Average Age
35



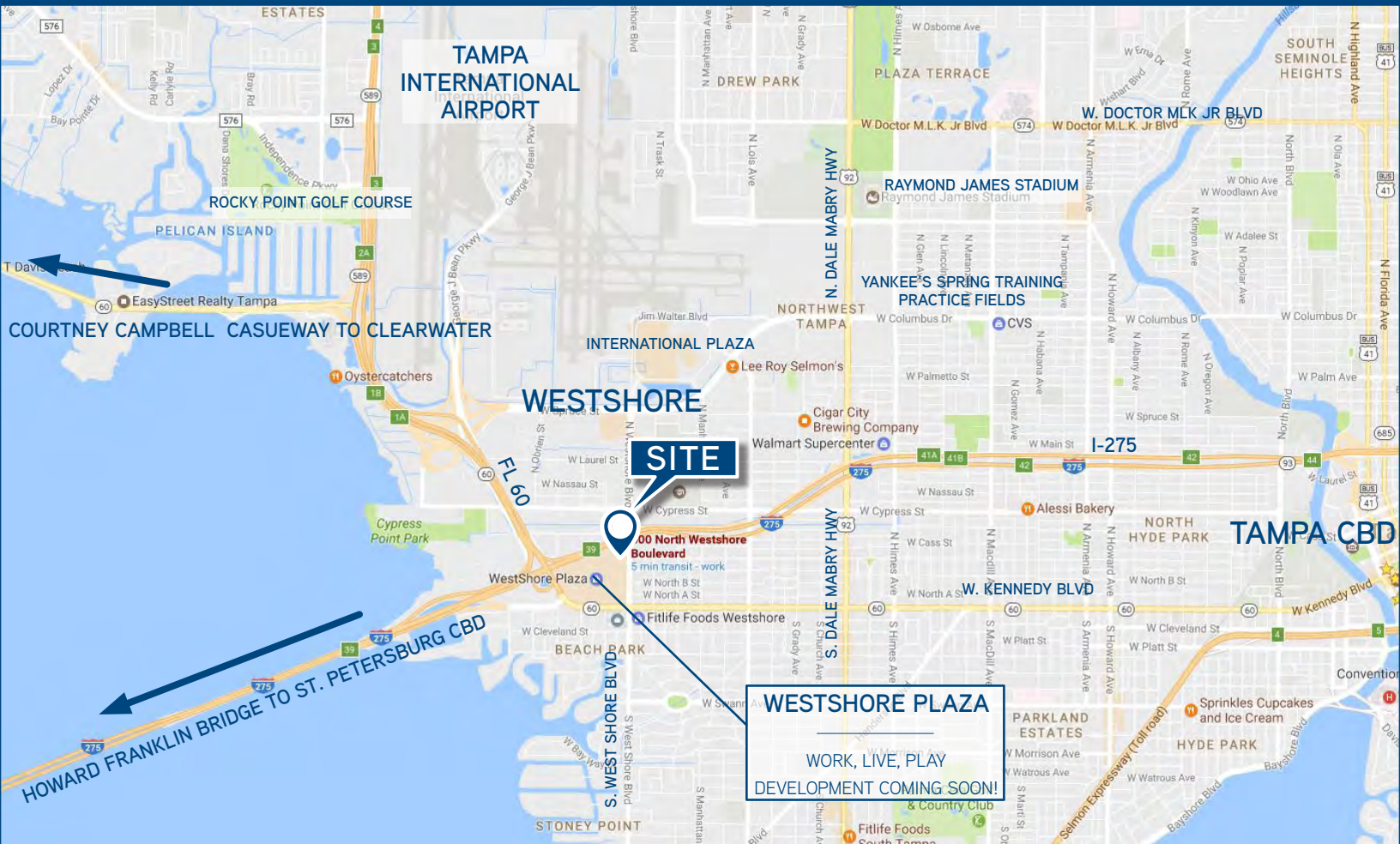
Average Income
\$66,000

Tampa Bay MSA
Population
3 Million

Hillsborough County
Population
1.4 Million

Pinellas County
Population
950,000

Pasco County
Population
505,000



Contact us:

Claire Calzon
Executive Managing Director
+1 813 871 8500
claire.calzon@colliers.com

Joanne LeBlanc
Senior Associate
+1 813 871 8535
joanne.leblanc@colliers.com



Accelerating success.