

Available For Lease



CONCORD PARK III

927 E SONTERRA BLVD | SAN ANTONIO | TX 78258



Premier
North Central San Antonio
Address & Visibility.

On-Site
Conference/Training
Room

Modern
& Efficient
Construction.





The Property

Concord Park III sits in a master-planned office, retail, and residential park in Stone Oak. The 101,000 SF, four story building offers great access and Class A amenities with cost-effective design and open floor plates to accommodate a variety of tenants.

Energy Efficient.



Building Highlights

- Building conference/training room with seating up to 70
- Access to nearby fitness facility
- On-site fresh vending in tenant lounge
- 4:1000 parking with underground executive parking
- Outdoor seating area
- Modern and efficient construction
- Built in 2022
- Energy Efficient
- Building Signage available

Modern Construction.



See What's Available

Level 1

- Suite 121: 4,594 SF
- Suite 125: 6,415 SF
(Demisable to 3,000 SF)

Level 2

- Suite 205: Up to 20,037 SF

Level 4

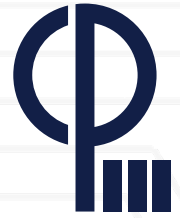
- Suite 400: Up to 27,302 SF





Premier North Central San Antonio Address



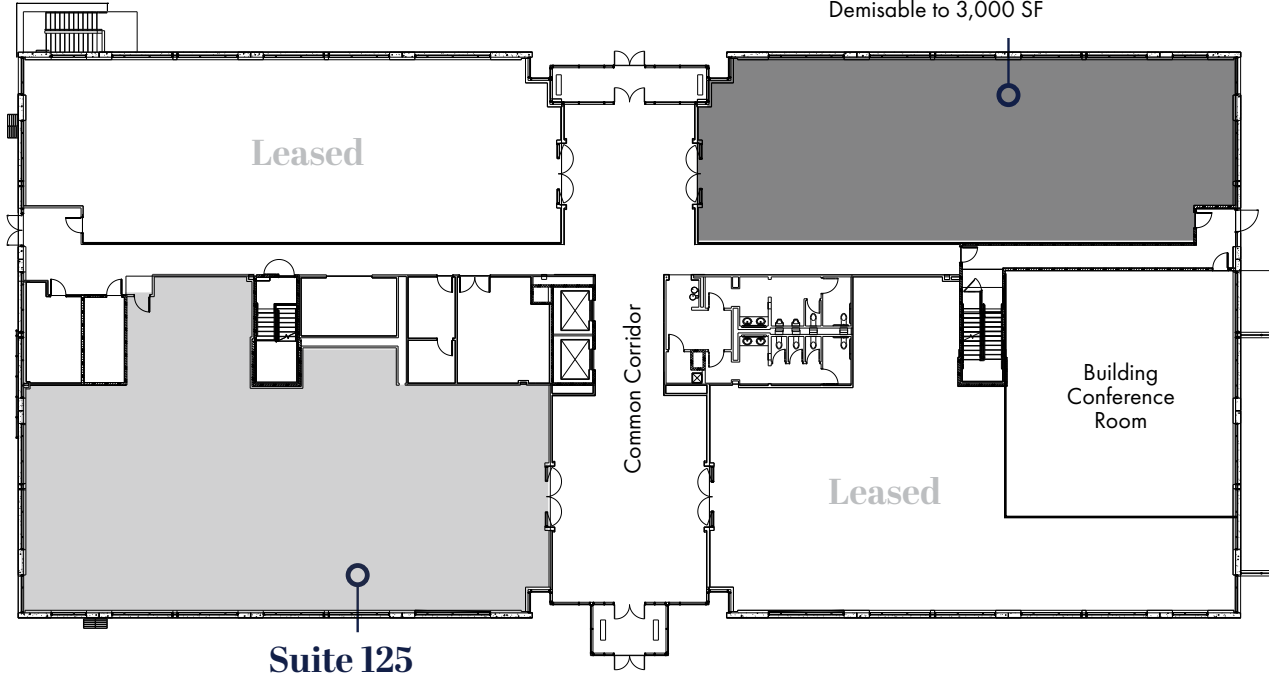


Level 1



Download Floorplate

Suite 121
4,594 RSF
Demisable to 3,000 SF



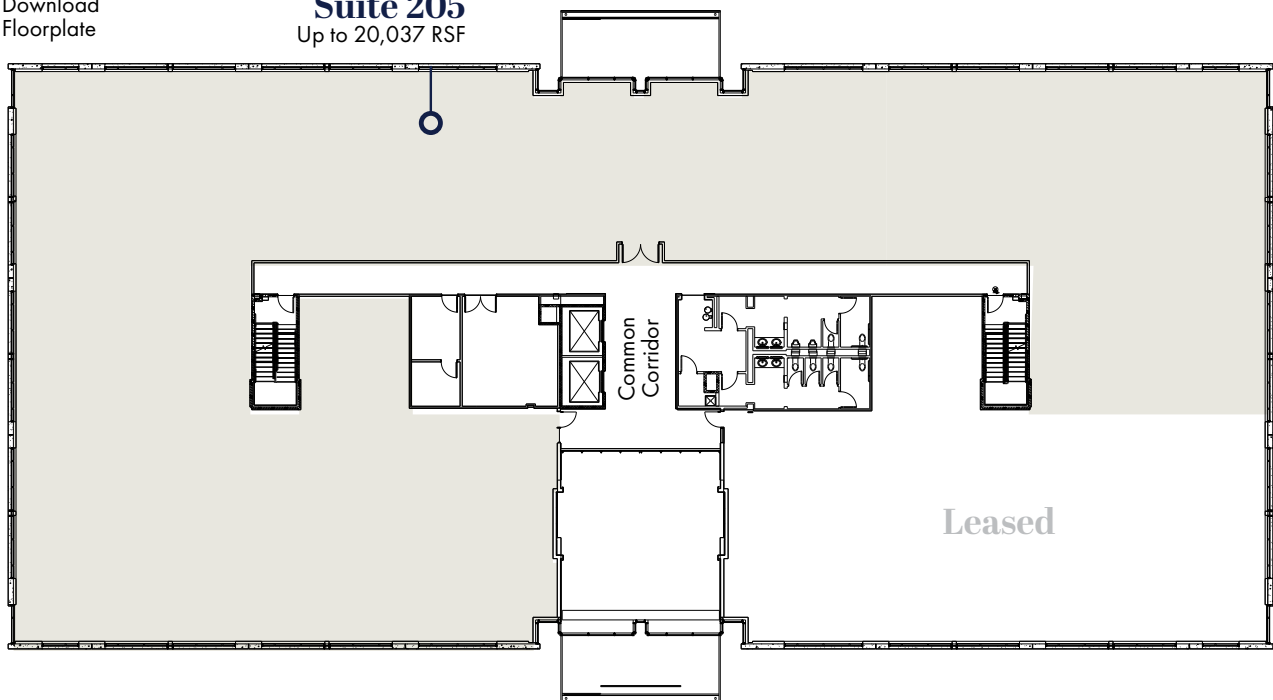
Suite 125
6,415 RSF

Level 2



Download Floorplate

Suite 205
Up to 20,037 RSF



Leased



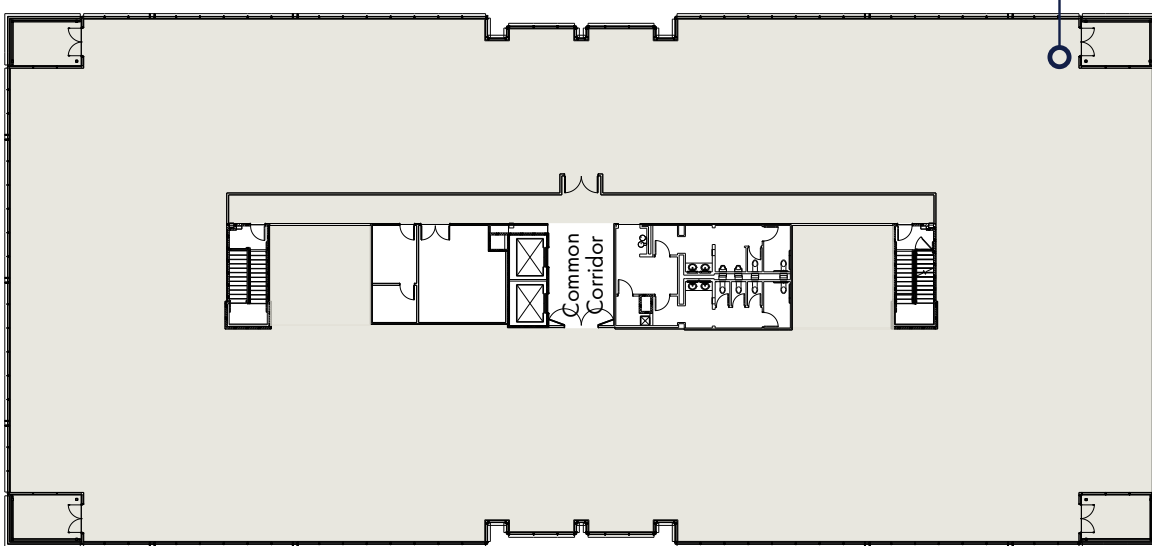
Level 4



Download Floorplate

Full Floor

Suite 400
Up to 27,302 RSF



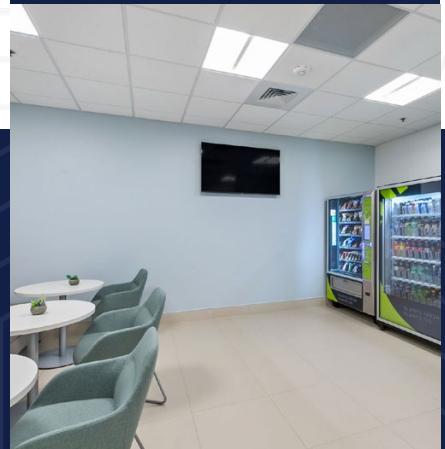
4/1,000
Parking
Ratio.



Access to
Nearby
Fitness Facility.



Fresh Vending
On-site in
Tenant Lounge.



Amenities

- Retail Stores (135)
- Restaurants (116)
- Entertainment (34)
- Food & Grocery Stores (38)
- Banks (40)
- Hotels (14)

Drive Times

■ 5 Minutes

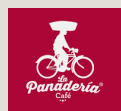


Concord Park III



CONCORD PARK III
927 E SON TERRA BLVD | SAN ANTONIO | TX 78258

In the Neighborhood





CONCORD PARK III

927 E SONTERRA BLVD | SAN ANTONIO | TX 78258



CONCORD
PROPERTIES

STREAM[®]

For More Information

Scott Ferguson

scott.ferguson@streamrealty.com

210.298.8531

Zander Thomas

zander.thomas@streamrealty.com

210.298.8541