

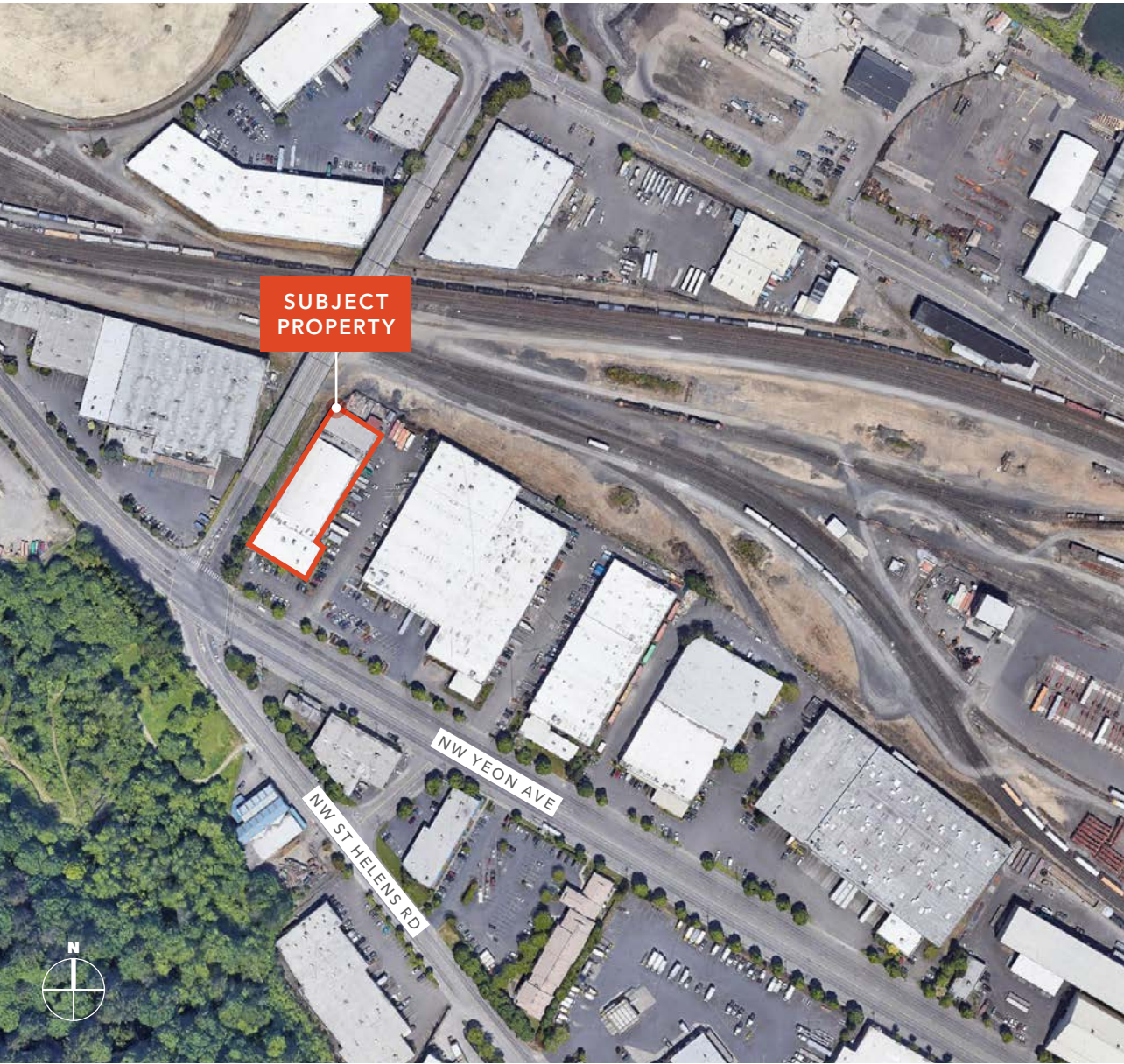
FOR LEASE

PRIME NW PORTLAND INDUSTRIAL

*Freestanding Building with
Yeon Ave Exposure*

4488 NW YEON AVE
PORTLAND, OR





PROPERTY FEATURES

34,000 SF freestanding industrial building fronting NW Yeon Ave

34,000 SF industrial building

Signage and exposure on Yeon Ave (HWY 30)

4,277 SF of nicely appointed office space

4 dock-high doors and 3 grade-level doors

Great parking in front and to the side of the building with good truck staging area

Small fenced yard area adjacent to building for outside storage

16' to 18' minimum clear height

Clear-span warehouse with no columns

Electrical distributed throughout warehouse area

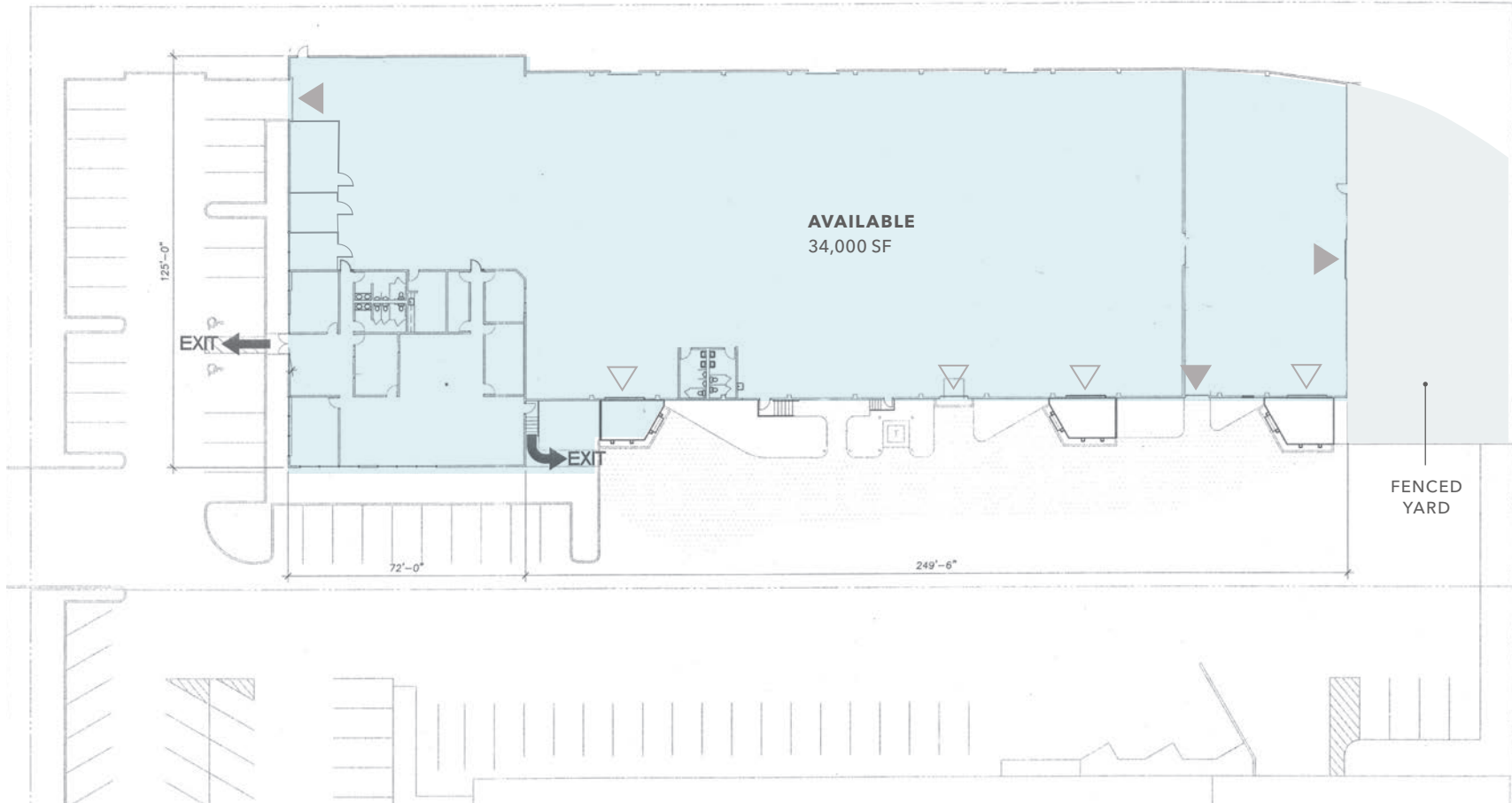
34,000 SF

AVAILABLE

CALL

FOR LEASE RATE

BUILDING SITE PLAN



▲ Grade-level loading

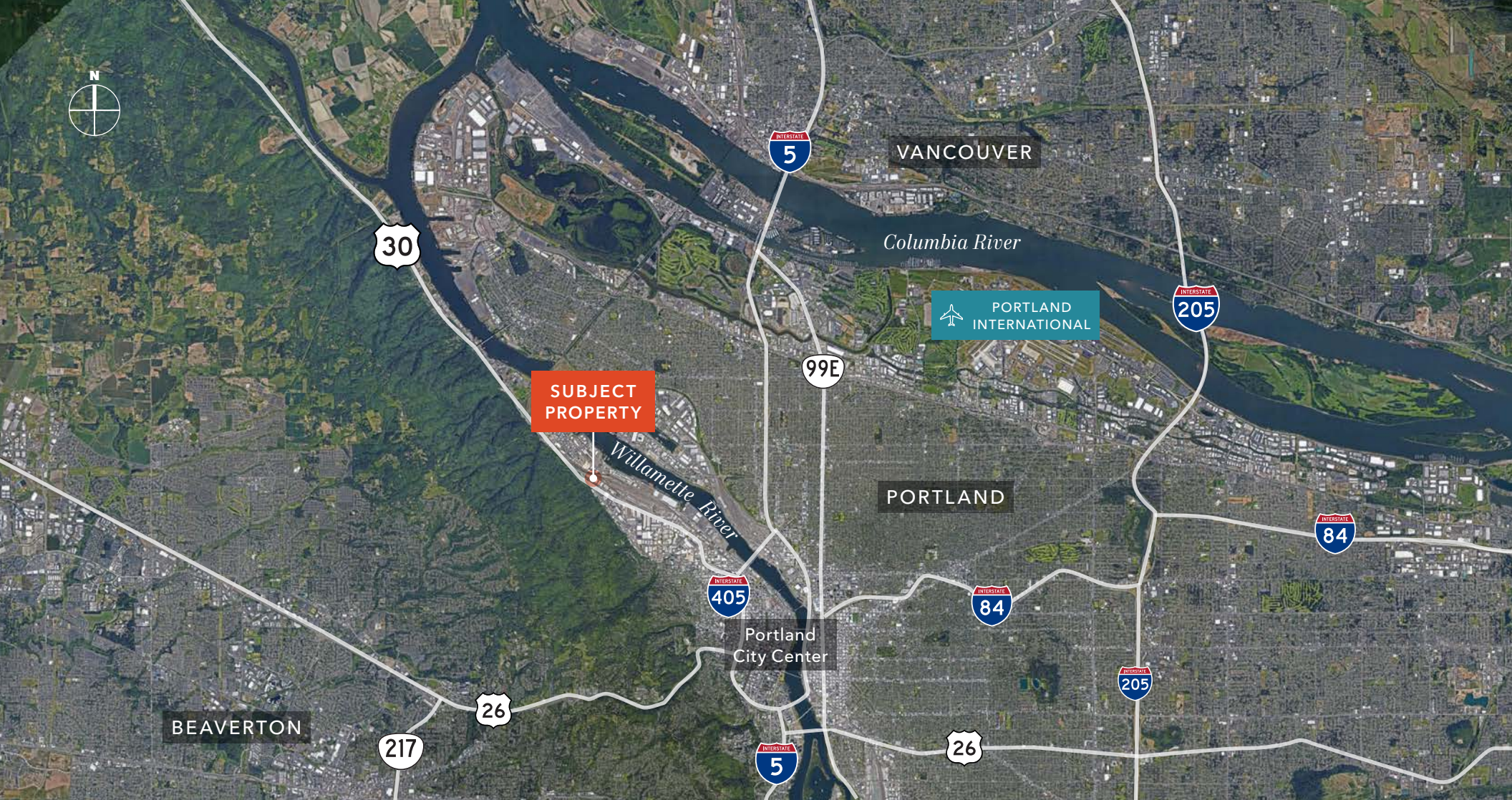
△ Dock-high loading

34,000 SF

BUILDING SIZE

4,277 SF

OFFICE



4488 NW YEON AVE

*For more information on
this property, please contact*

STEVEN KLEIN
503.221.2260
steven.klein@kiddier.com

PETER STALICK
503.706.8180
peter.stalick@kiddier.com

BRENDAN MURPHY
503.721.2705
brendan.murphy@kiddier.com

[KIDDER.COM](https://www.kiddier.com)

This information supplied herein is from sources we deem reliable. It is provided without any representation, warranty, or guarantee, expressed or implied as to its accuracy. Prospective Buyer or Tenant should conduct an independent investigation and verification of all matters deemed to be material, including, but not limited to, statements of income and expenses. Consult your attorney, accountant, or other professional advisor.

