

PROPOSED NEW FACILITY FOR EAST PROVIDENCE EAST PROVIDENCE, R.I. CREDIT UNION

NO.	REVISION	BY	DATE
1	ROOF 1-0-1-115		
2	REPLACE GLASS / FRZ.		
3	UNUSUAL		
4	GENERAL		

WALTER J. CASS, JR. AIA
ARCHITECT

LEONARD A. GAROFALO, INC.
LAND PLANNERS, ARCHITECTS I/C

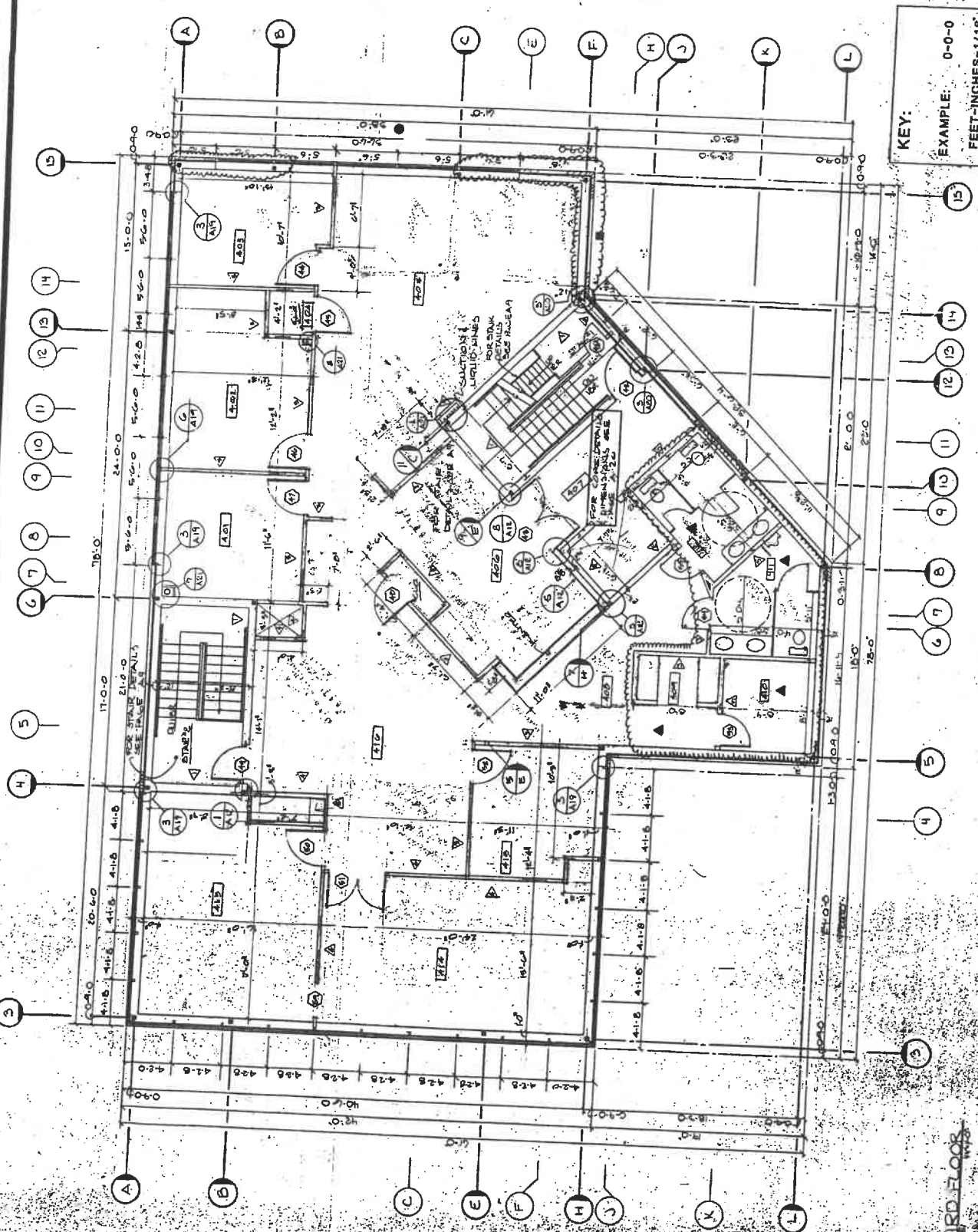
720 JEFFERSON BOULEVARD
WARWICK, RHODE ISLAND
02887

JOB NO. 2-188	DRAWN BY JJP
DRAWING NO.	CHECKED BY JDR
SCALE	APPROVED
AS NOTED	DATE

SHEET - THIRD FLOOR PLAN

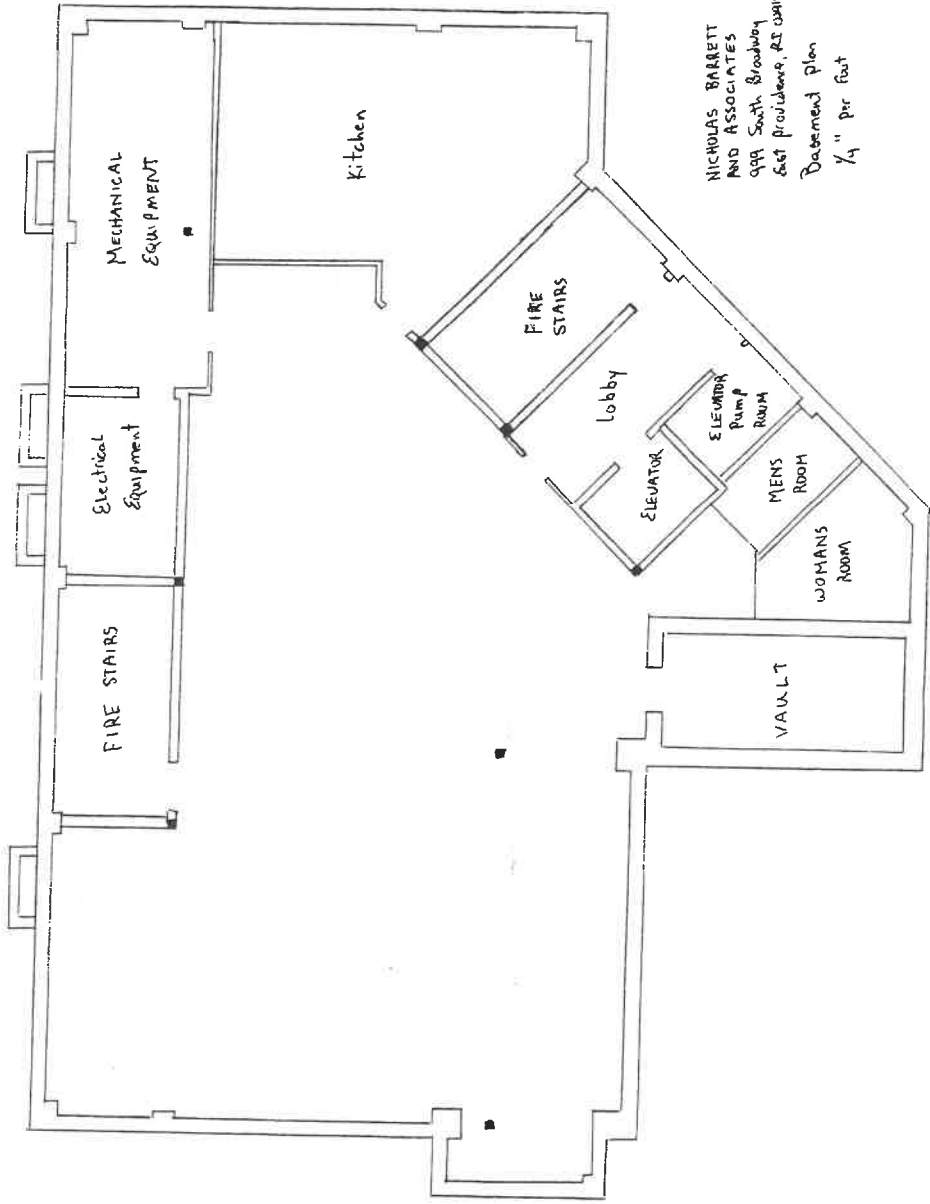
A-4

11 OF 45 SHEETS



KEY:
EXAMPLE: 0-0-0
FEET-INCHES-1/16"

UNIVERSITY BOOKS



NICHOLAS BARRETT
AND ASSOCIATES
999 South Broadway
East Providence, RI 02839
Basement Plan
1/4" per foot