

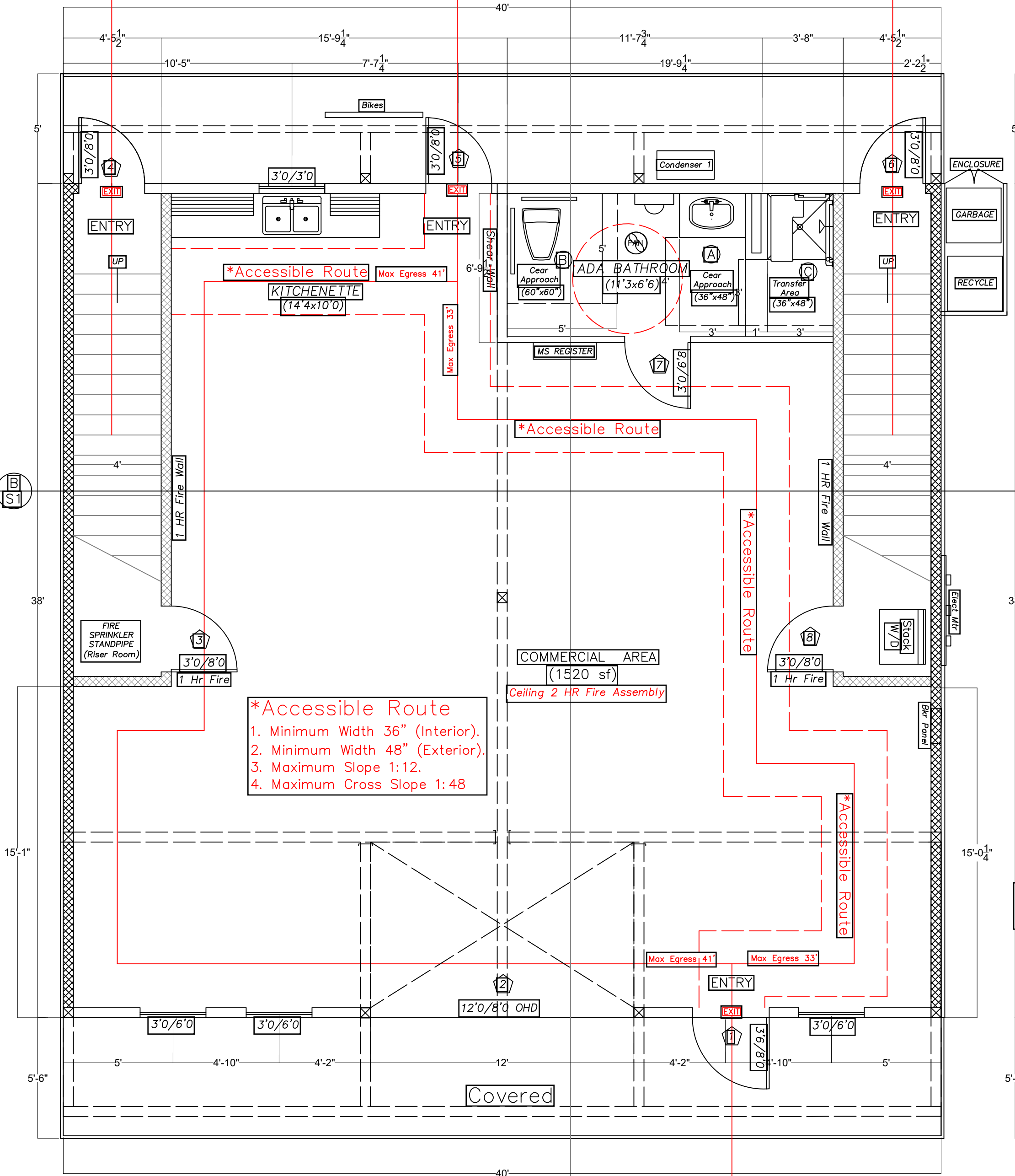
DOOR SCHEDULE							
Mark	Room	Size	Thickness	Swing	Frame	Hardware	Remarks
1	**Entry	3'6"x8'0"	1 3/4"	LH IN	Metal	**Air Curtain	Ext Full Light (U=0.2)
2	OHD	12'0"x8'0"	2"	Track	Metal	OHD	Glass (U=0.2)
3	Storage	3'0"x8'0"	1 1/2"	RH Out	Metal	Egress	Interior (1 hr fire)
4	Apt 1 Entry	3'0"x8'0"	1 3/4"	RH Out	Wood	Egress	Ext Full Light (U=0.2)
5	Back Entry	3'0"x8'0"	1 3/4"	RH Out	Wood	Panic	Ext Full Light (U=0.2)
6	Apt 2 Entry	3'0"x8'0"	1 3/4"	LH Out	Wood	Egress	Ext Full Light (U=0.2)
7	ADA Bath	3'0"x6'8"	1 1/2"	LH Out	Wood	Egress	Interior
8	Storage	3'0"x8'0"	1 1/2"	LH Out	Metal	Egress	Interior (1 hr fire)

**10.4.5 Air Curtains. Air curtain units shall be tested in accordance with ANSI/AMCA 220 or ISO 27327-1 and installed and commissioned in accordance with the manufacturer's instructions to ensure proper operation and shall have a jet velocity of not less than 6.6 feet per second at 6.0 in above the floor and direction not less than 20 degrees toward the opening. Automatic controls shall be provided that will operate the air curtain with the opening and closing of the door.

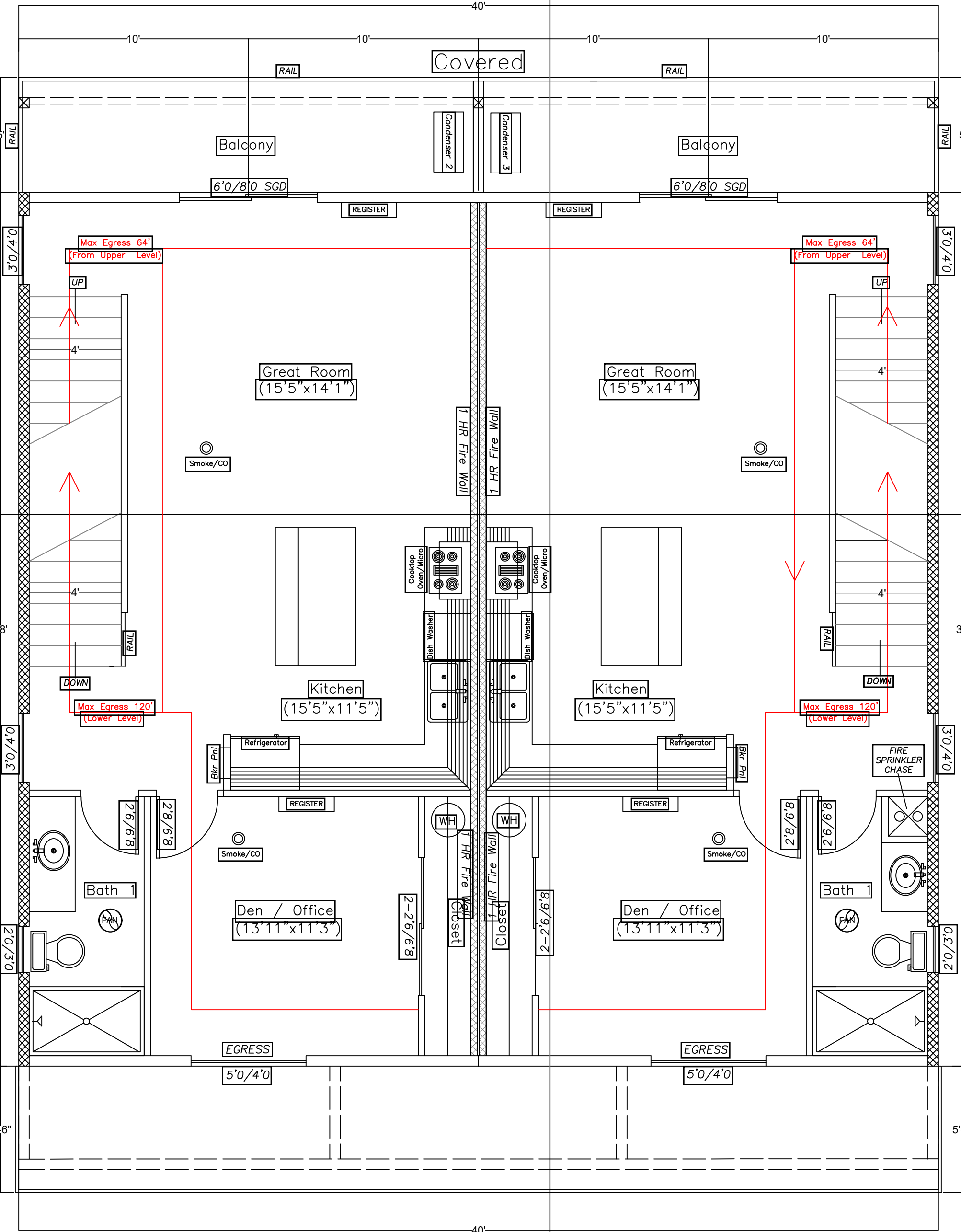
DISCHARGE TO PARKING LOT (MAX EGRESS 120')

*Accessible Route
DISCHARGE TO PARKING LOT (MAX EGRESS 41')

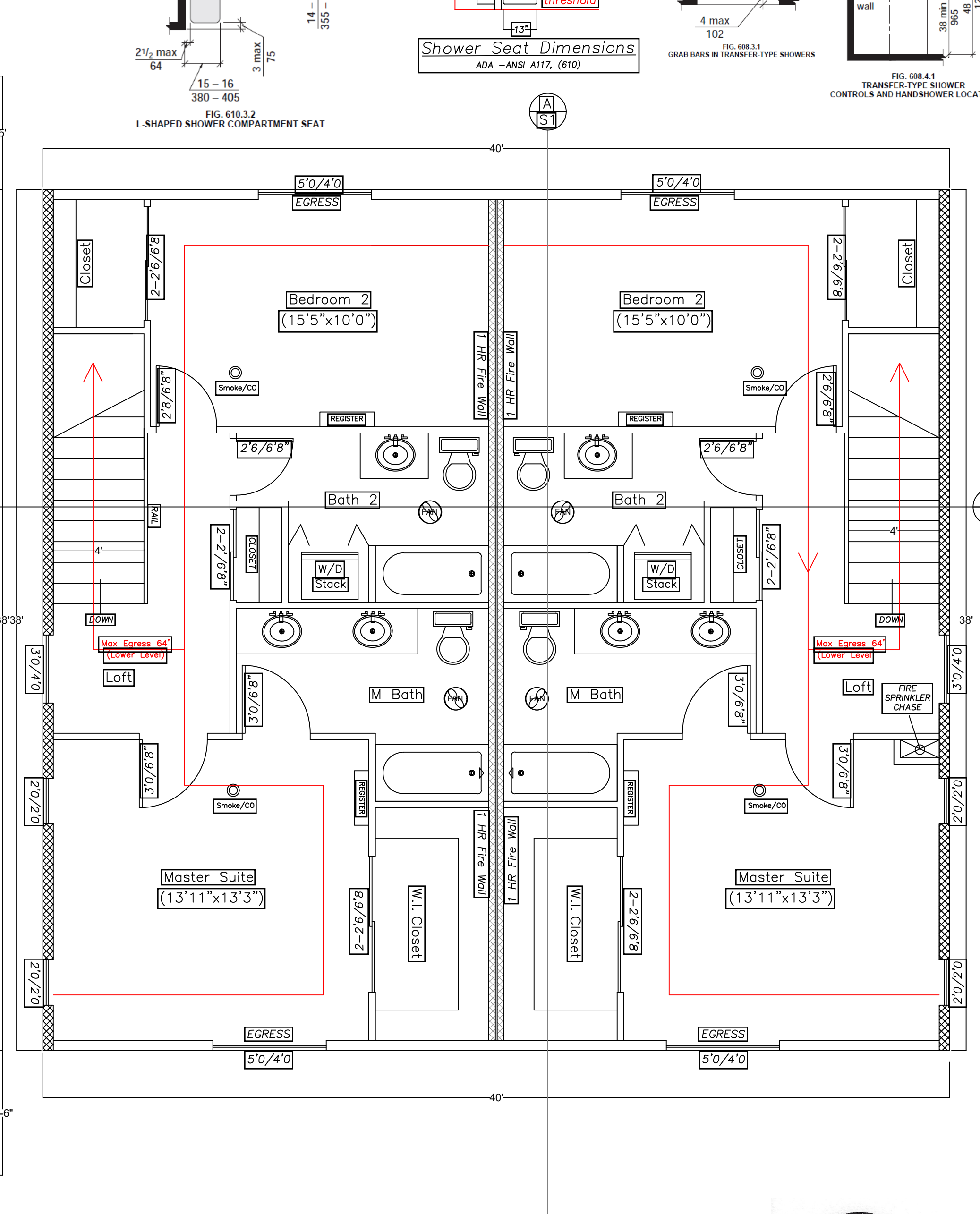
DISCHARGE TO PARKING LOT (MAX EGRESS 120')



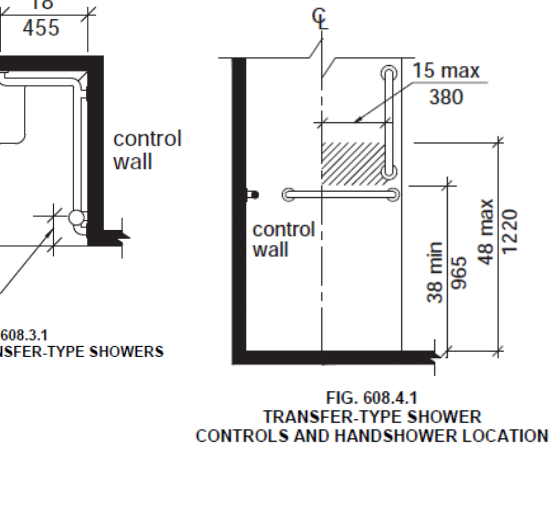
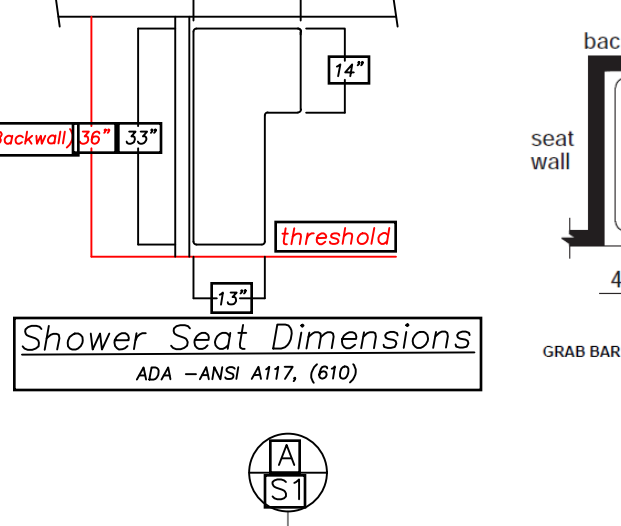
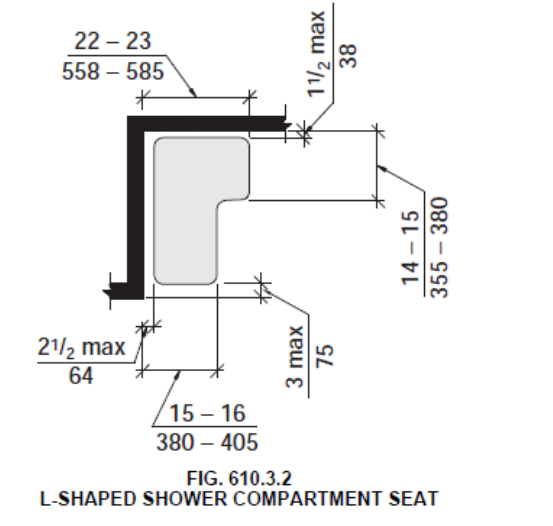
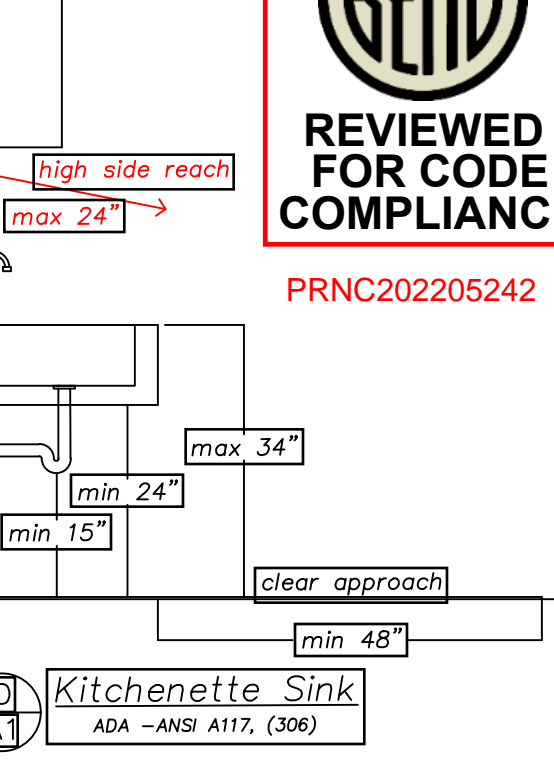
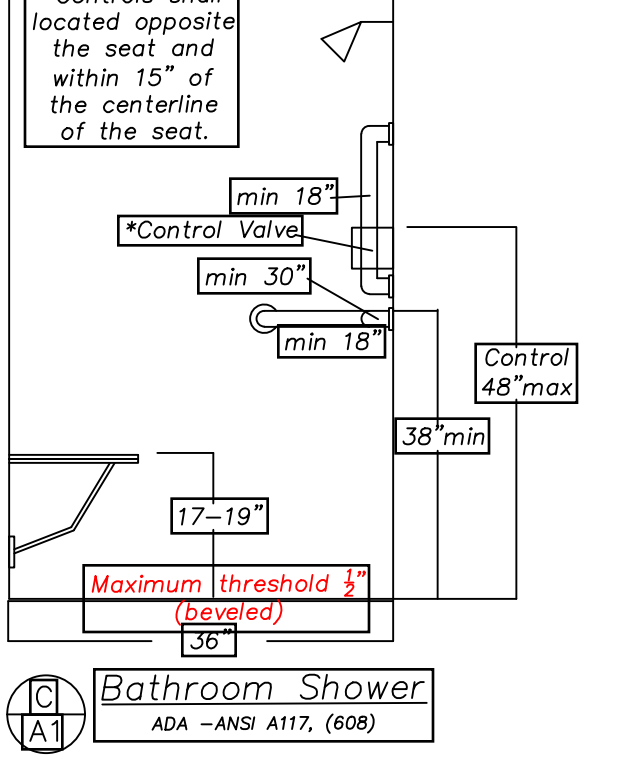
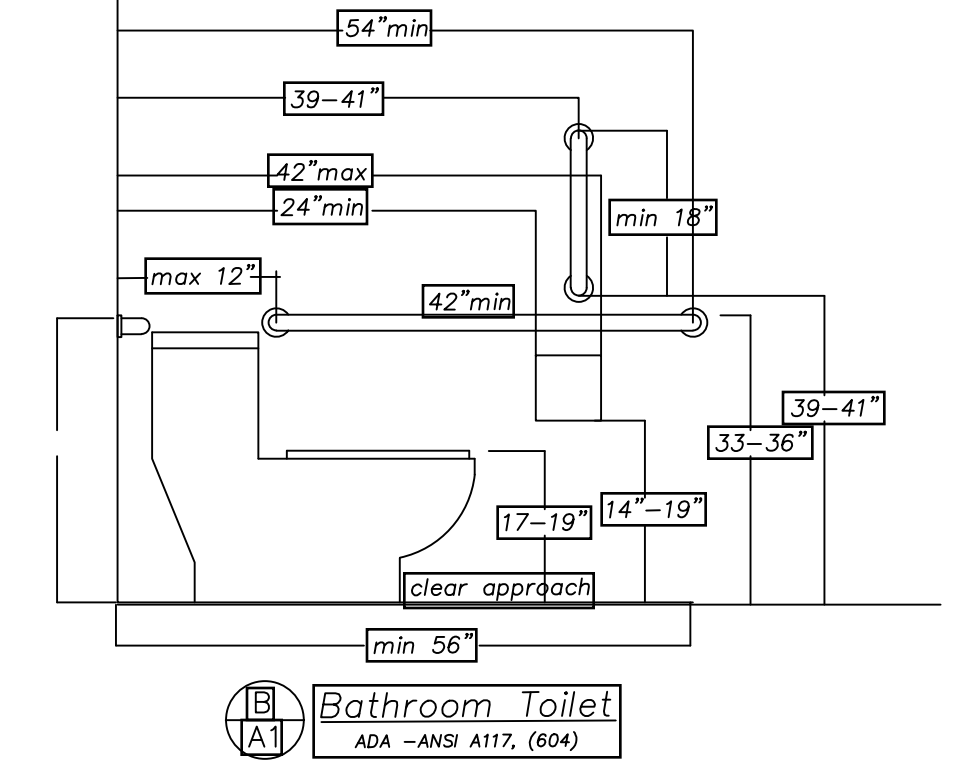
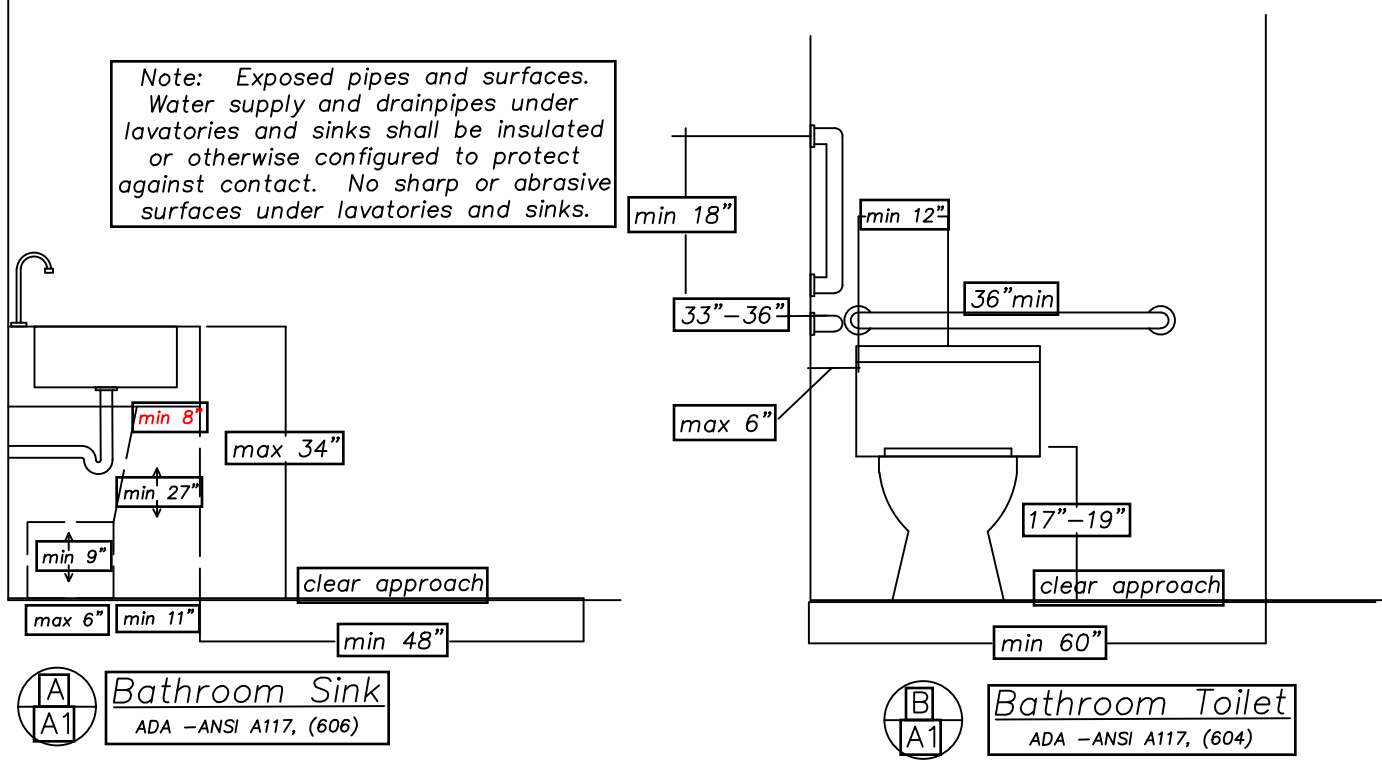
Commercial (1520 sf)
Level 1



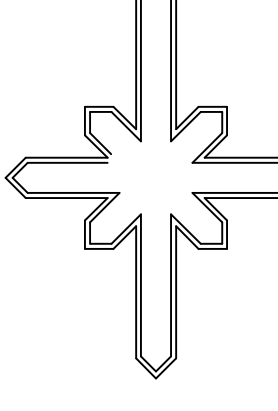
Apartments (1520 SF)
Level 2



Apartments (1520 SF)
Level 3



STARWOOD DESIGNS
Steven G. Banton, PE
17007 Golden Stone Drive, Sisters Oregon 97759
Phone: (541) 719-1281, team@bantoneengineering.com



BANTON
ENGINEERING, INC.

COMMERCIAL BUILDING
38 NW Greeley
Bend, OREGON

FLOOR PLAN

FILE: STENROSE A1
SCALE: 1/4" = 1'-0"
DATE: 5/24/23

