



Industrial Building Available

355 W Boden St
Milwaukee, WI 53207

Lease Rate	Subject to Offer
Sale Price	Subject to Offer
Total Available Space	20,000 Sq Ft
Size of office space	2,100 Sq Ft
Zoning	IL-1 Light Industrial
Docks	3 docks & 1 drive-in door
Power	3-phase (TBV)
Lot Size	1.7 Acres

Contact us:

Jason Amrani
414-507-9700
Jason@cpiwi.com



355 W Boden St, Milwaukee Wisconsin

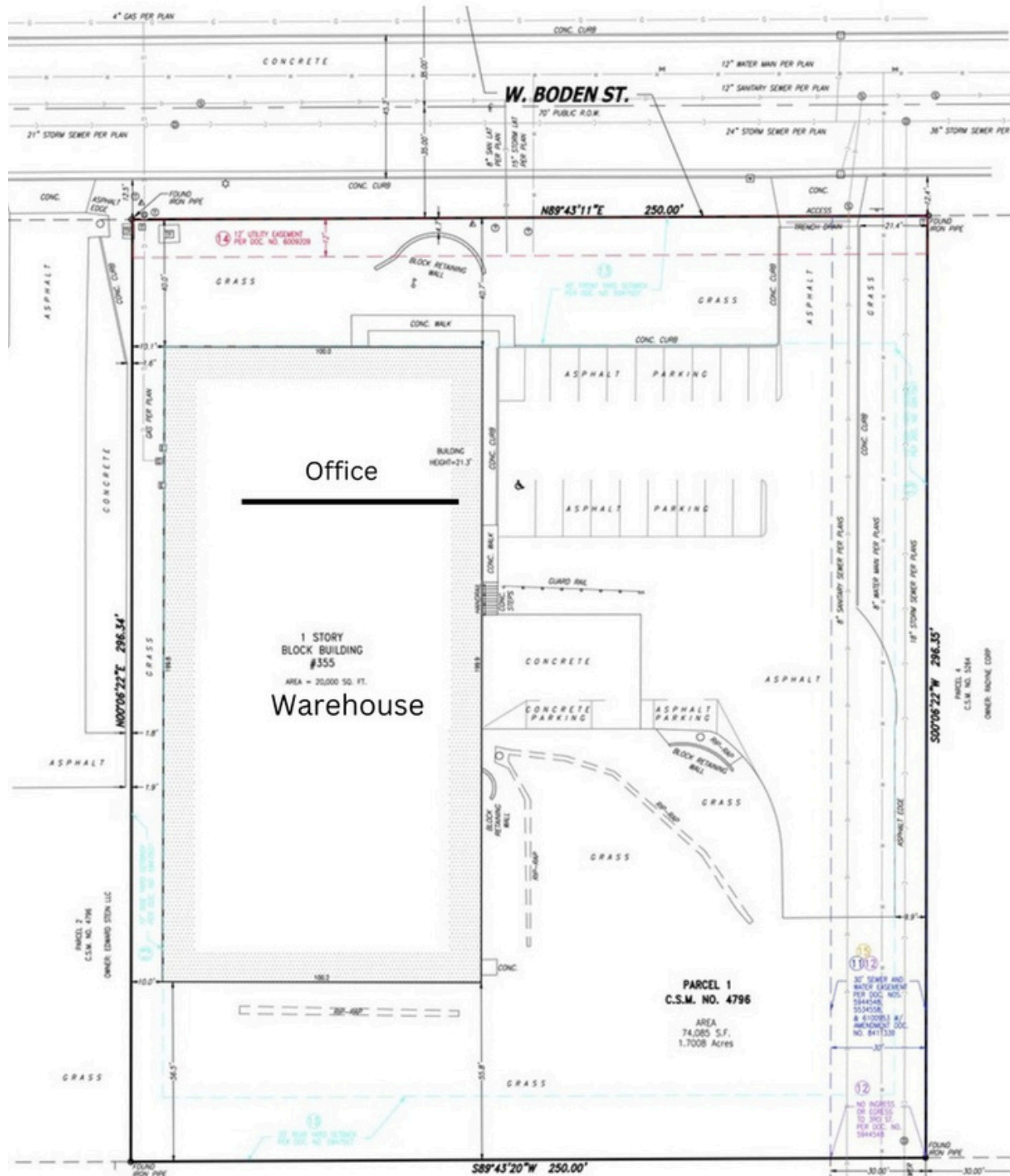
Site photos



Property Info

Parking	20+ Surface Stalls
Clear Height	18'
Storage	3,000 Sq Ft Mezzanine
Door Height	14'
Year Built	1996
Construction	Masonry

Parcel Layout



DISCLAIMER: THIS MARKETING PACKAGE IS PROVIDED FOR INFORMATIONAL PURPOSES ONLY AND SHALL NOT BE CONSIDERED A REPRESENTATION OR WARRANTY OF ANY KIND, INCLUDING BUT NOT LIMITED TO AN EXPRESS OR IMPLIED WARRANTY. NO WARRANTY OR REPRESENTATION IS MADE AS TO THE ACCURACY OF THE INFORMATION FURNISHED HEREIN REGARDING THE PROPERTY FOR SALE OR FOR RENT, AND THE USER IS CAUTIONED THAT THE MARKETING PACKAGE MAY CONTAIN ERRORS OR OMISSIONS, AND INFORMATION MAY BE SUBJECT TO CHANGE INCLUDING CHANGE OF PRICE, RENTAL OR OTHER CONDITIONS PRIOR TO SALE OR LEASE, WITH OR WITHOUT NOTICE. THE RECIPIENT OF THIS MARKETING PACKAGE WAIVES AND DISCLAIMS ANY AND ALL CLAIMS AGAINST, AND LIABILITY OF THE SELLER OR ITS REPRESENTATIVES OR AGENTS WITH RESPECT TO THIS MARKETING PACKAGE AND THE INFORMATION CONTAINED IN IT. ALL INFORMATION SHALL BE INDEPENDENTLY VERIFIED BY THE RECIPIENT OF THIS MARKETING PACKAGE.