

FOR SALE

56.95 ACRES LAND - SHOP & HOUSE

14140 | Salem Church Rd.
KING GEORGE, VA 22485



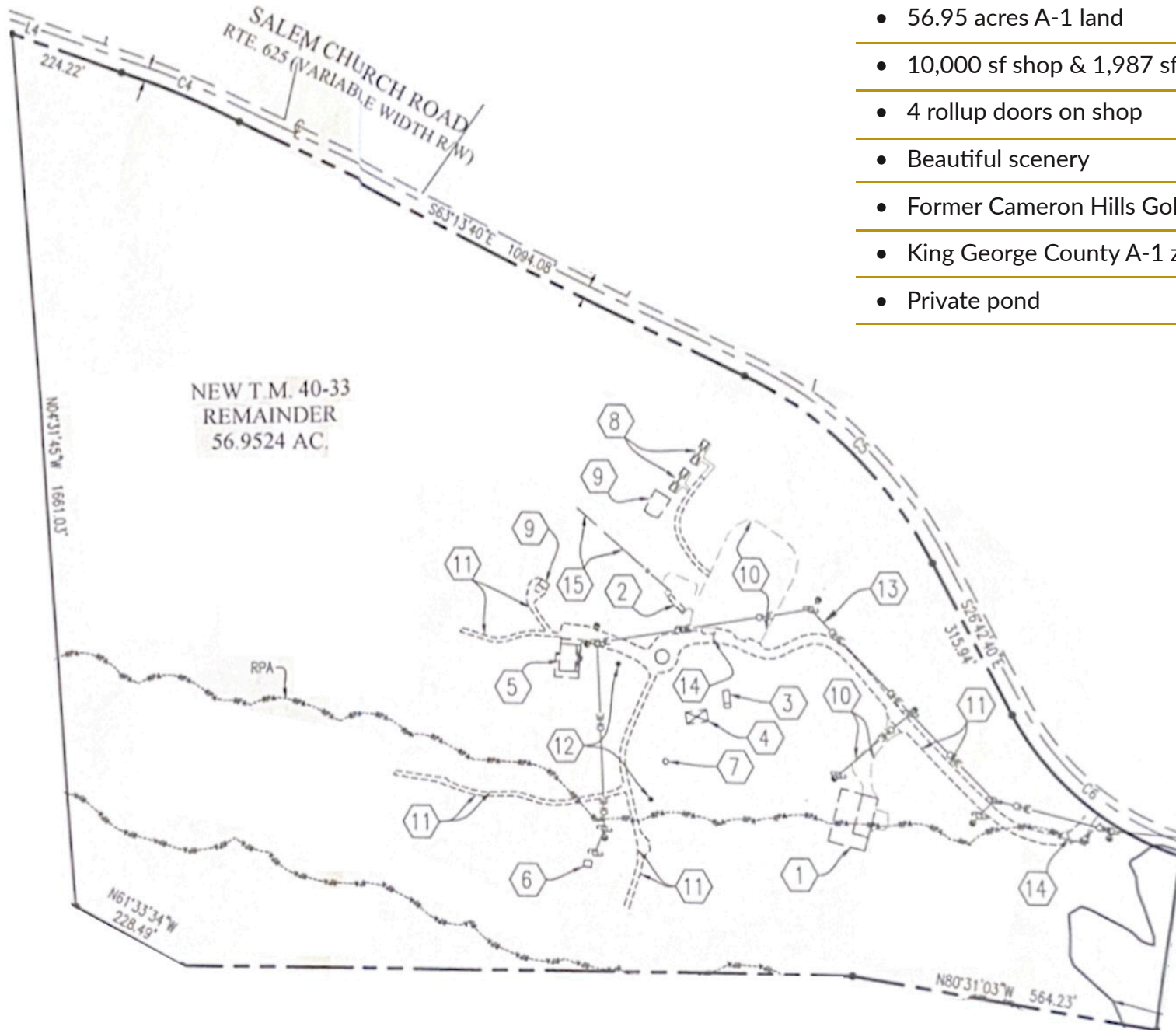
SPECIFICATIONS

Size:	56.95 Acres
Pricing:	\$750,000
Zoning:	A-1
Buildings:	10,000 SF Shop 1,987 SF House

PLAT MAP



J R A



- 56.95 acres A-1 land
- 10,000 sf shop & 1,987 sf house
- 4 rollup doors on shop
- Beautiful scenery
- Former Cameron Hills Golf Course
- King George County A-1 zoning
- Private pond

PARCEL VIEW



J R A



HOUSE PHOTOS



J R A



LAND PHOTOS



SHOP PHOTOS



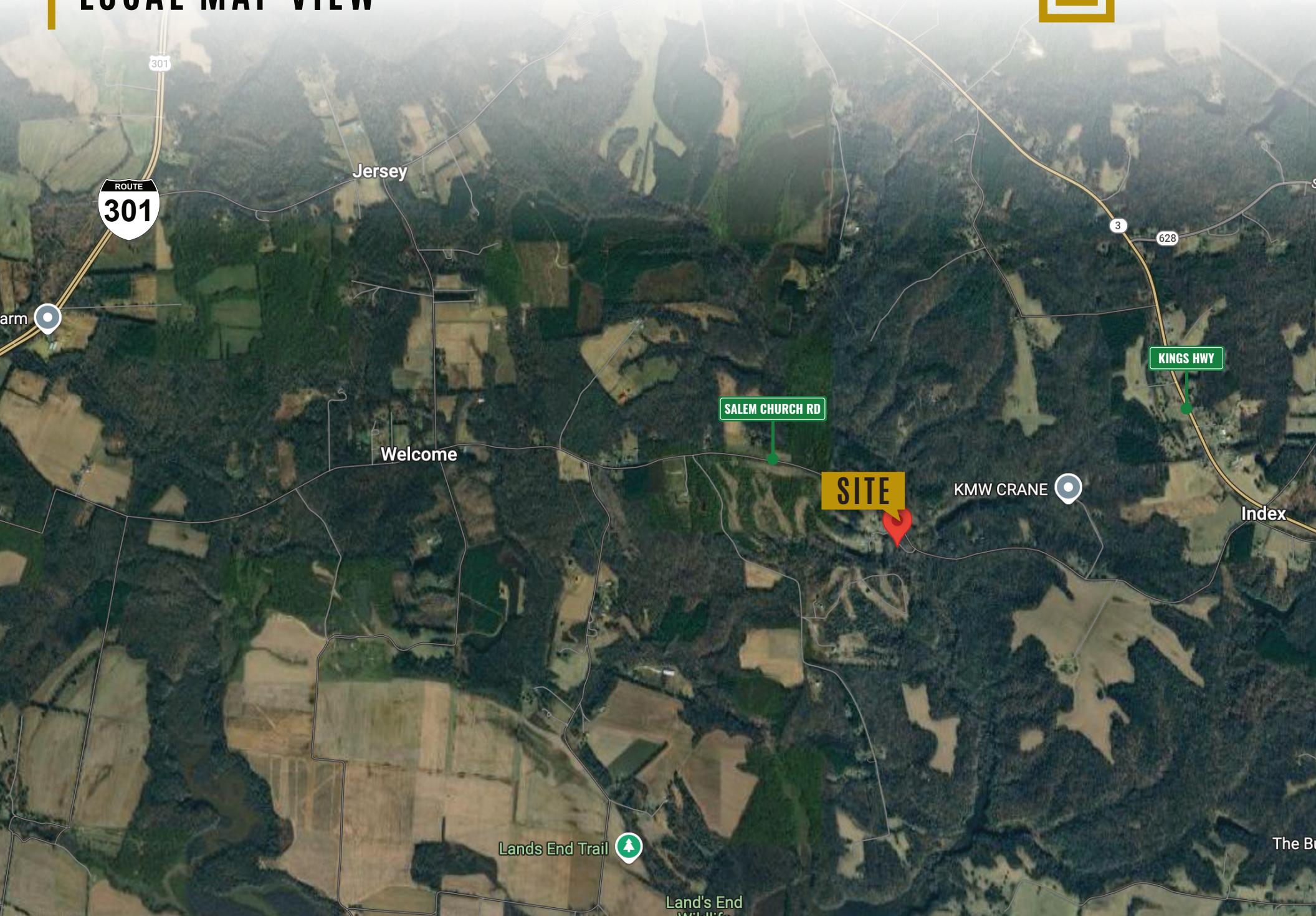
J R A



LOCAL MAP VIEW



J R A



ROUTE
301

Jersey

Welcome

SALEM CHURCH RD

KINGS HWY

SITE

KMW CRANE

Index

Lands End Trail

Land's End

FOR MORE INFORMATION PLEASE CONTACT:



Heather Hagerman

☎ 540-429-2429 (Cell)

☎ 540-372-7675 (Office)

✉ hagerman@johnsonrealtyadvisors.com



Fitzhugh Johnson III

☎ 540-623-4565 (Cell)

☎ 540-372-7675 (Office)

✉ fjohnson3@johnsonrealtyadvisors.com



Andrew Hall

☎ 540-656-3515 (Cell)

☎ 540-372-7675 (Office)

✉ Andrew@johnsonrealtyadvisors.com



JOHNSON

REALTY

ADVISORS

All information contained herein was made based upon information furnished to us by the owner or from sources we believe are reliable. While we do not doubt its accuracy, we have not verified it and we do not make any guarantee, warranty or representation about it. The property offered is subject to prior sale, lease, change of price or withdrawal from the market without notice.