



Woodland Office Park

1544 N. WOODLAND PARK BLVD.
LAYTON, UT 84041

For Lease
\$15.50/SF NNN

Property Highlights

- Building 1544 Suite 320: 2,786 SF available
- Located just north of Layton Hills Mall
- Centrally located between Ogden and Salt Lake City
- Many nearby amenities
- \$6.30/SF operating expenses
- Tenant pays in-suite janitorial services

For information, please contact:

Chris Falk, CCIM, SIOR

Executive Managing Director

t 801-416-1024

chris.falk@nmrk.com

Braxton Willie, CCIM

Managing Director

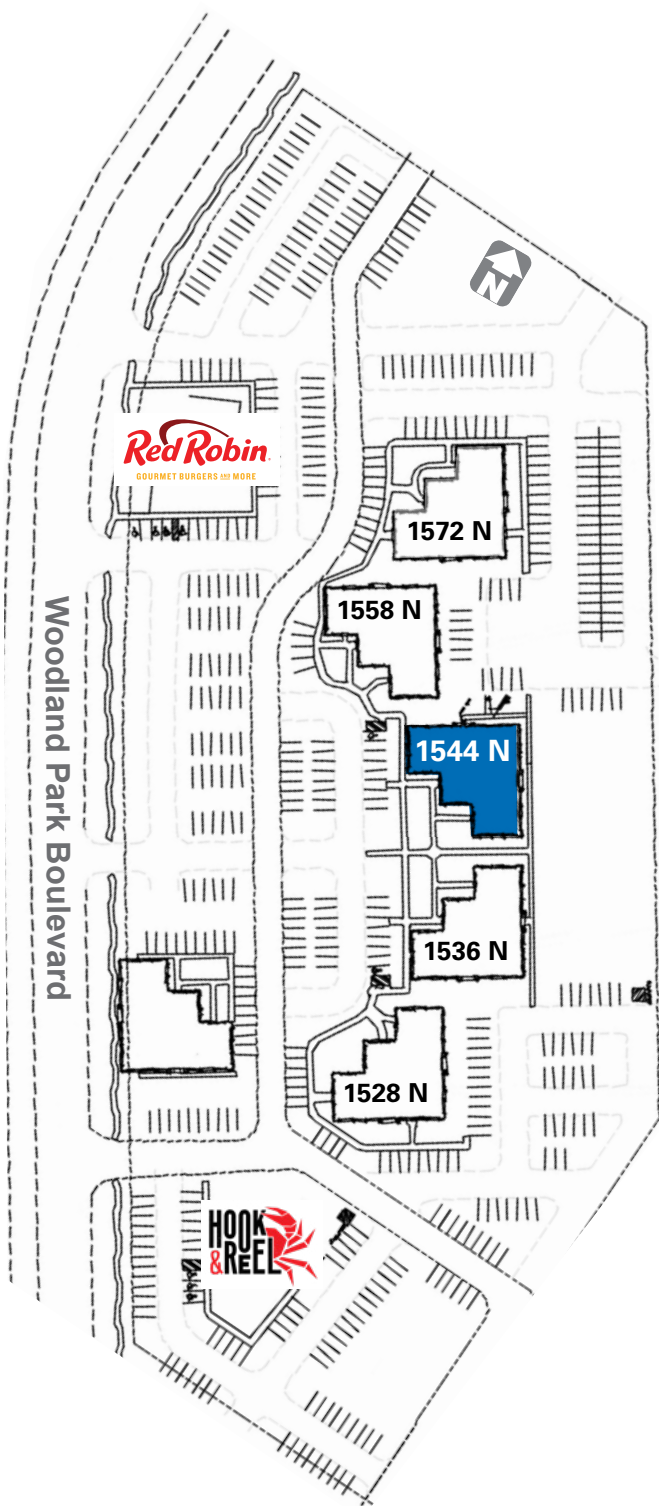
t 801-416-1050

braxton.willie@nmrk.com

nmrk.com

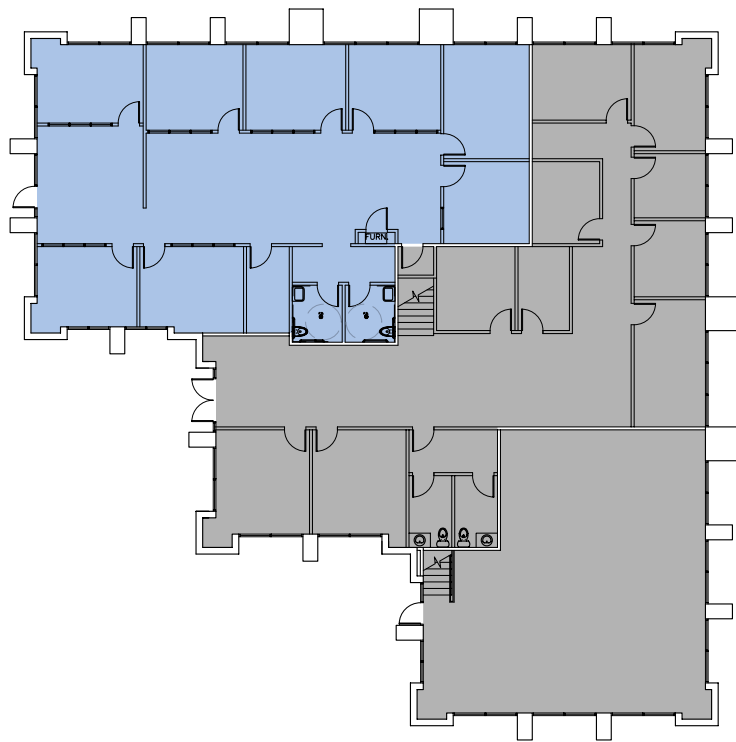
NEWMARK

The information contained herein has been obtained from sources deemed reliable but has not been verified and no guarantee, warranty or representation, either express or implied, is made with respect to such information. Terms of sale or lease and availability are subject to change or withdrawal without notice.



1544 NORTH

Suite 320-2,786 SF



For information, please contact:

Chris Falk, CCIM, SIOR

Executive Managing Director

t 801-416-1024

chris.falk@nmrk.com

Braxton Willie, CCIM

Managing Director

t 801-416-1050

braxton.willie@nmrk.com

nmrk.com

NEWMARK

The information contained herein has been obtained from sources deemed reliable but has not been verified and no guarantee, warranty or representation, either express or implied, is made with respect to such information. Terms of sale or lease and availability are subject to change or withdrawal without notice.



For information, please contact:

Chris Falk, CCIM, SIOR
 Executive Managing Director
 t 801-416-1024
 chris.falk@nmrk.com

Braxton Willie, CCIM
 Managing Director
 t 801-416-1050
 braxton.willie@nmrk.com

nmrk.com

NEWMARK

The information contained herein has been obtained from sources deemed reliable but has not been verified and no guarantee, warranty or representation, either express or implied, is made with respect to such information. Terms of sale or lease and availability are subject to change or withdrawal without notice.