

SALE

8382 N PALAFOX ST

8382 N Palafox St Pensacola, FL 32534



PROPERTY DESCRIPTION

This Freestanding Building, Zoned Heavy Commercial/ Light Industrial (HC/LI) is centrally located in Northwest Pensacola between I-10, Hwy 29, and W 9 Mile Rd. Recent improvements to the property include a New Roof in 2023, New Water Heater in 2024 and a New Backflow Preventer in 2014. Demographics within a 5-mile radius include a Total Population of 129,848 and an Average Household Income of \$78,456

PROPERTY HIGHLIGHTS

- Freestanding. Zoned HC/LI. Highway Accessibility I-10 (2 miles)/ Hwy 29 (0.5 miles)/ 9 Mile Rd (1.3 miles). New Roof '23

OFFERING SUMMARY

Sale Price:	\$375,000
Number of Units:	1
Lot Size:	0.42 Acres
Building Size:	4,925 SF

DEMOGRAPHICS	1 MILE	3 MILES	5 MILES
Total Households	2,406	21,245	52,262
Total Population	5,941	49,915	129,848
Average HH Income	\$57,374	\$75,162	\$78,456

Melissa Glyptis Simpson
850.733.6532

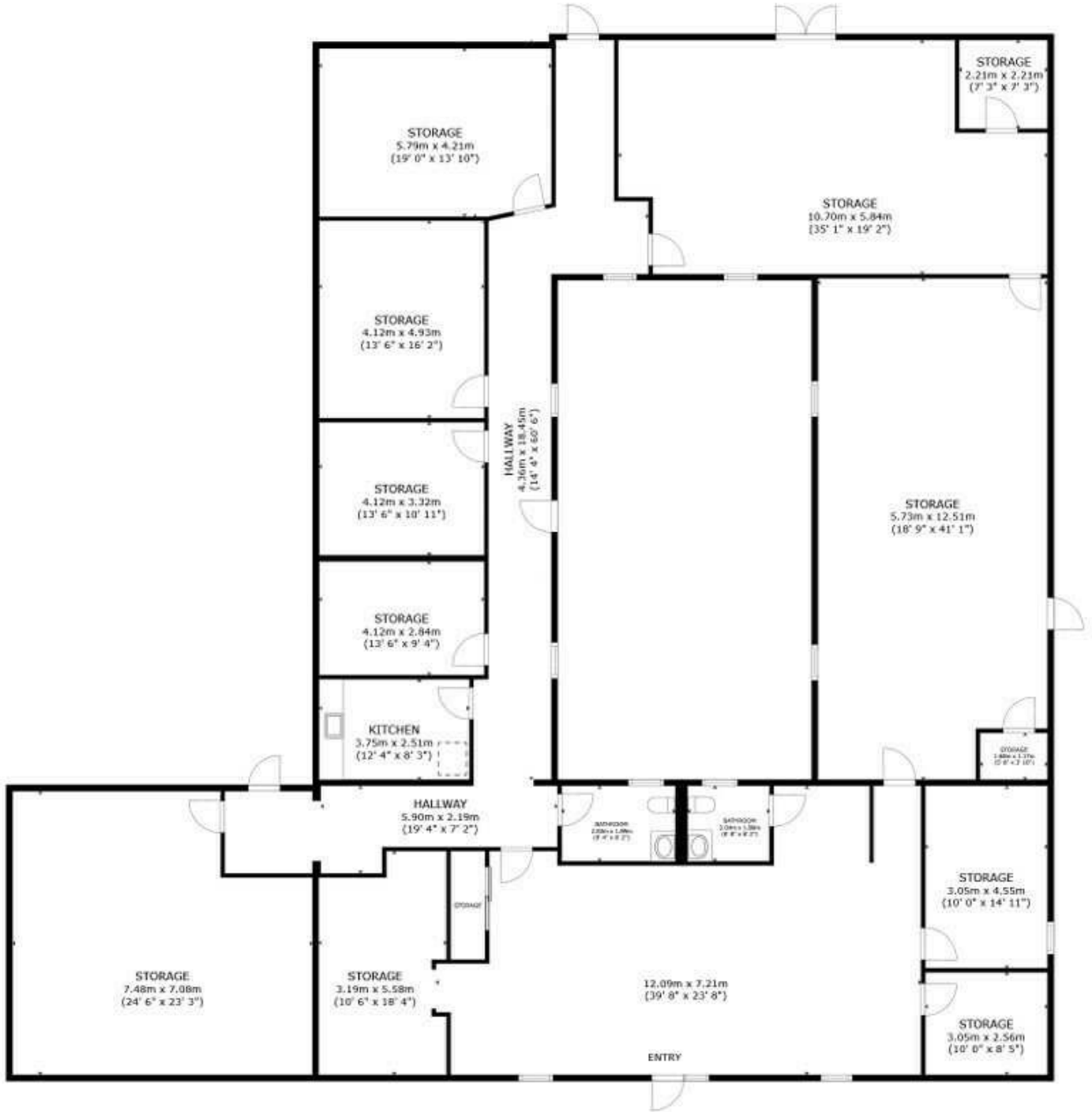


**COLDWELL BANKER
COMMERCIAL**
REALTY

SALE

8382 N PALAFOX ST

8382 N Palafox St Pensacola, FL 32534



Melissa Glyptis Simpson
850.733.6532



COLDWELL BANKER
COMMERCIAL
REALTY

SALE

8382 N PALAFOX ST

8382 N Palafox St Pensacola, FL 32534



Melissa Glyptis Simpson
850.733.6532

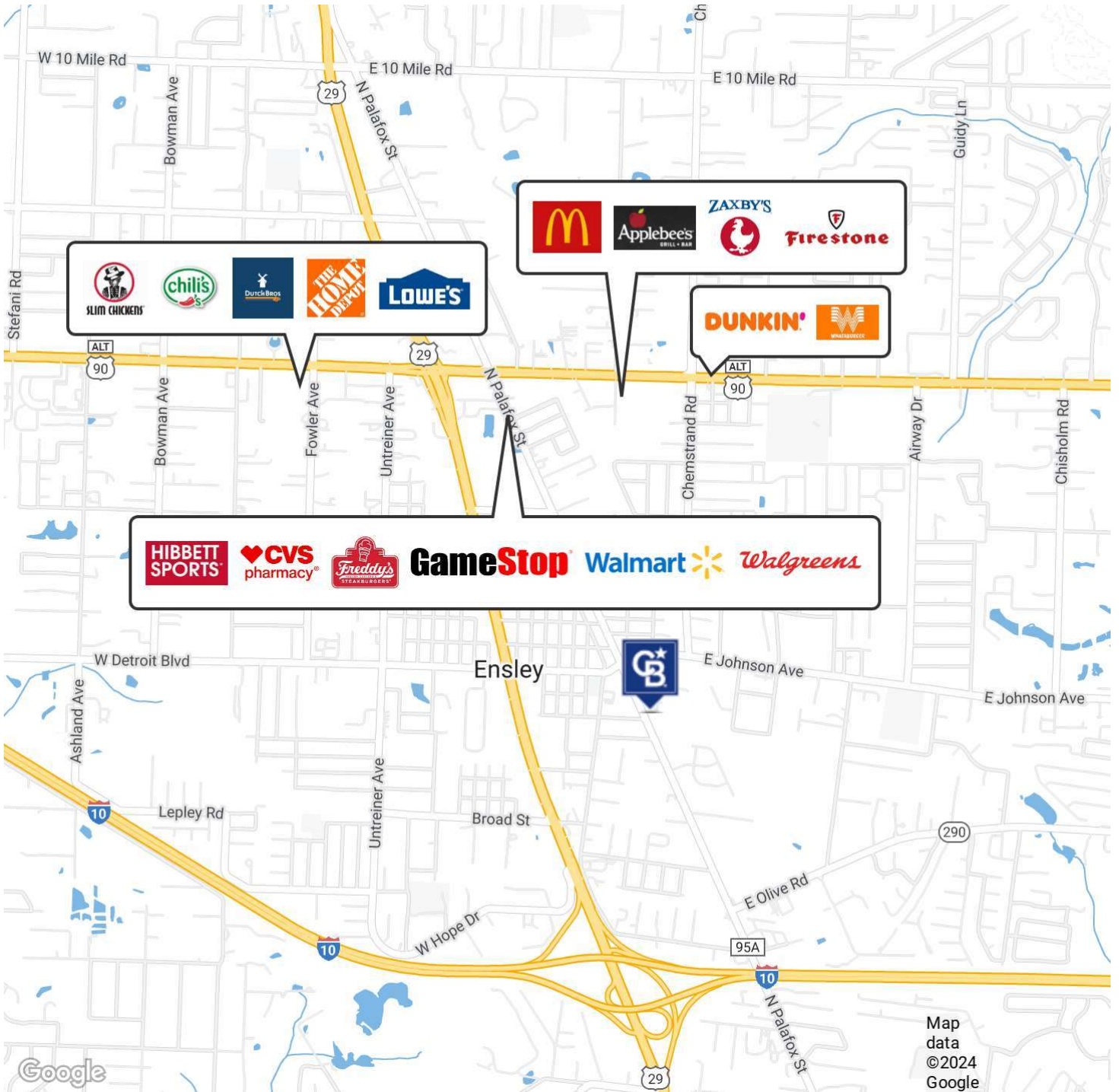


COLDWELL BANKER
COMMERCIAL
REALTY

SALE

8382 N PALAFOX ST

8382 N Palafox St Pensacola, FL 32534



Melissa Glyptis Simpson
850.733.6532

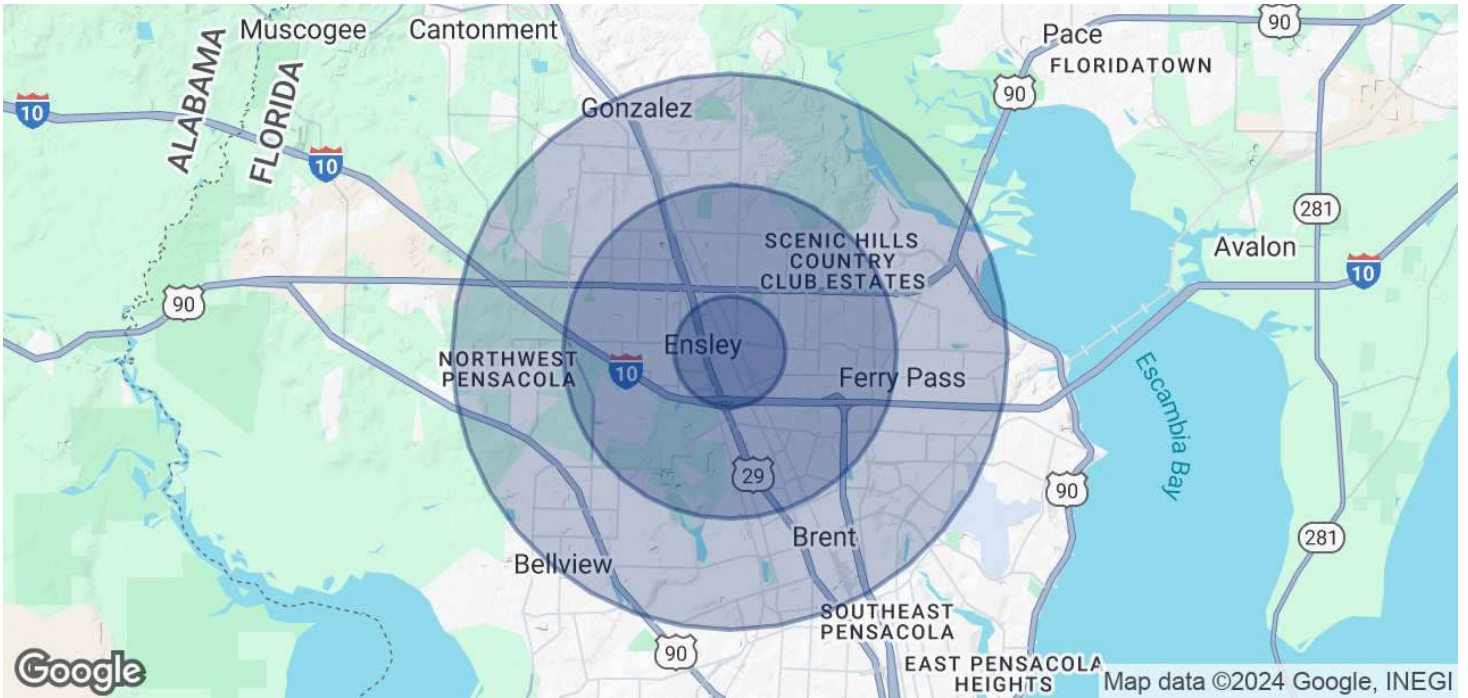


**COLDWELL BANKER
COMMERCIAL
REALTY**

SALE

8382 N PALAFOX ST

8382 N Palafox St Pensacola, FL 32534



POPULATION

	1 MILE	3 MILES	5 MILES
Total Population	5,941	49,915	129,848
Average Age	39	42	41
Average Age (Male)	37	40	40
Average Age (Female)	41	44	43

HOUSEHOLDS & INCOME

	1 MILE	3 MILES	5 MILES
Total Households	2,406	21,245	52,262
# of Persons per HH	2.5	2.3	2.5
Average HH Income	\$57,374	\$75,162	\$78,456
Average House Value	\$167,176	\$236,050	\$247,506

Demographics data derived from AlphaMap

Melissa Glyptis Simpson
850.733.6532



**COLDWELL BANKER
COMMERCIAL**
REALTY