

7615 Old Mt Holly Road, Charlotte, NC 28214

Industrial Outdoor Storage Opportunity in Charlotte, NC

±2.2 - 8.5 USABLE ACRES FOR LEASE OR SALE

Available Q4 2026

Under Construction



**Conceptual drawing*

Gray Gaines
Vice President
704 413 0230
gray.gaines@avisonyoung.com

Henry Lobb, SIOR
Principal
704 469 5964
henry.lobb@avisonyoung.com

**AVISON
YOUNG**

PROPERTY OVERVIEW



±2.2 - 8.5 USABLE ACRES
INDUSTRIAL OUTDOOR STORAGE OPPORTUNITY

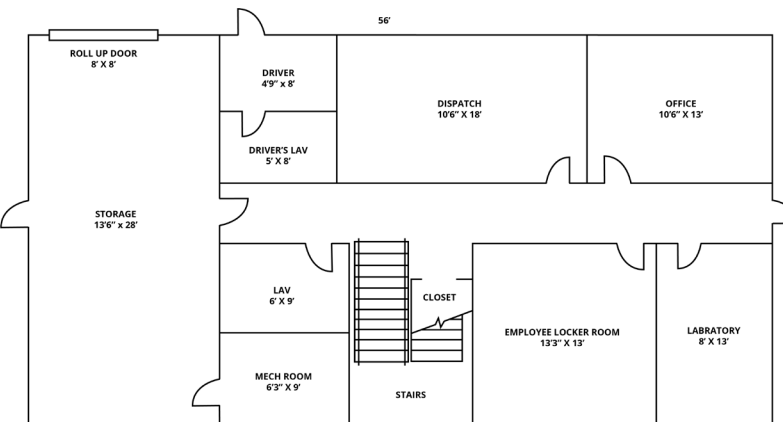
Address	7615 Old Mt Holly Rd Charlotte, NC 28214	Structure(s)	±1,879 SF shop with (2) 12' x 12' grade level doors; ±3,360 SF office (<i>two-story</i>)
Parcel ID(s)	05724305 & 05724308	Auto Parking	±21 spaces
Zoning	ML-2	Yard Features	Partially asphalt and crush and run gravel, fully fenced with gate entries; lit and demisable
Acreage	16.025 AC (±2.2-8.5 usable acres)	Available	Q4 2026

PROPERTY LAYOUT

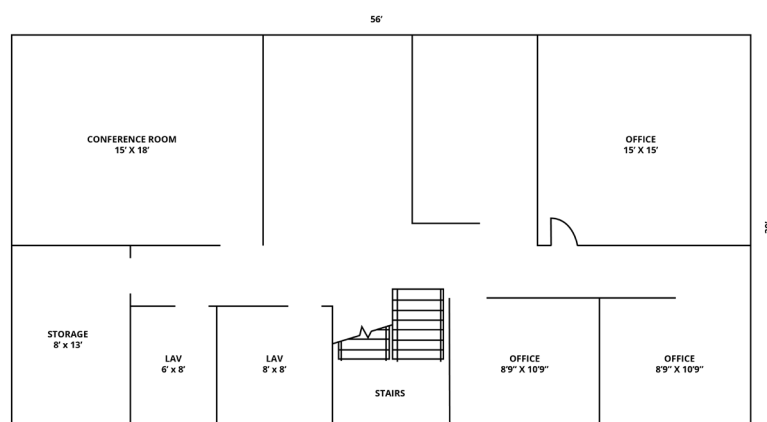
1,879 SF Shop



Two-story office



FIRST FLOOR
OFFICE



SECOND FLOOR
OFFICE

MAP OVERVIEW



INTERSTATE 485
±2.0 miles



INTERSTATE 85
±3.5 miles



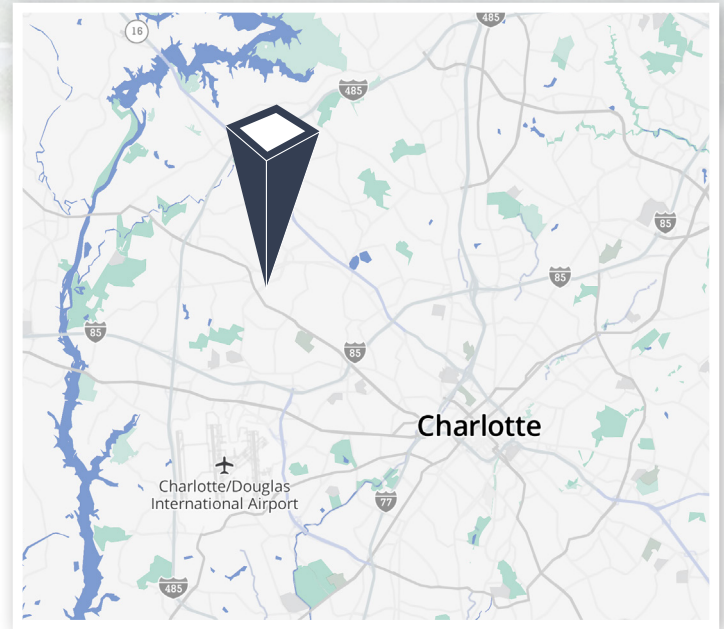
CSX INTERMODAL
±2.7 miles



CHARLOTTE DOUGLAS
INTERNATIONAL AIRPORT
±4.4 miles



INTERSTATE 77
±7.1 miles



Gray Gaines
Vice President
704 413 0230
gray.gaines@avisonyoung.com

Henry Lobb, SIOR
Principal
704 469 5964
henry.lobb@avisonyoung.com

