

FOR LEASE OR SALE

PROPERTY FEATURES

AVAILABLE:	Suite 150: ±3,158 SF <ul style="list-style-type: none">• Space is in shell condition
TOTAL BUILDING SIZE:	±32,640 SF
PARCEL SIZE:	±2.5 Acres
ADDITIONAL FEATURES:	Immediate access to HWY 99 Arch Road Frontage
LEASE RATE	Contact Broker

3663 ARCH ROAD

STOCKTON • CALIFORNIA



CONTACT



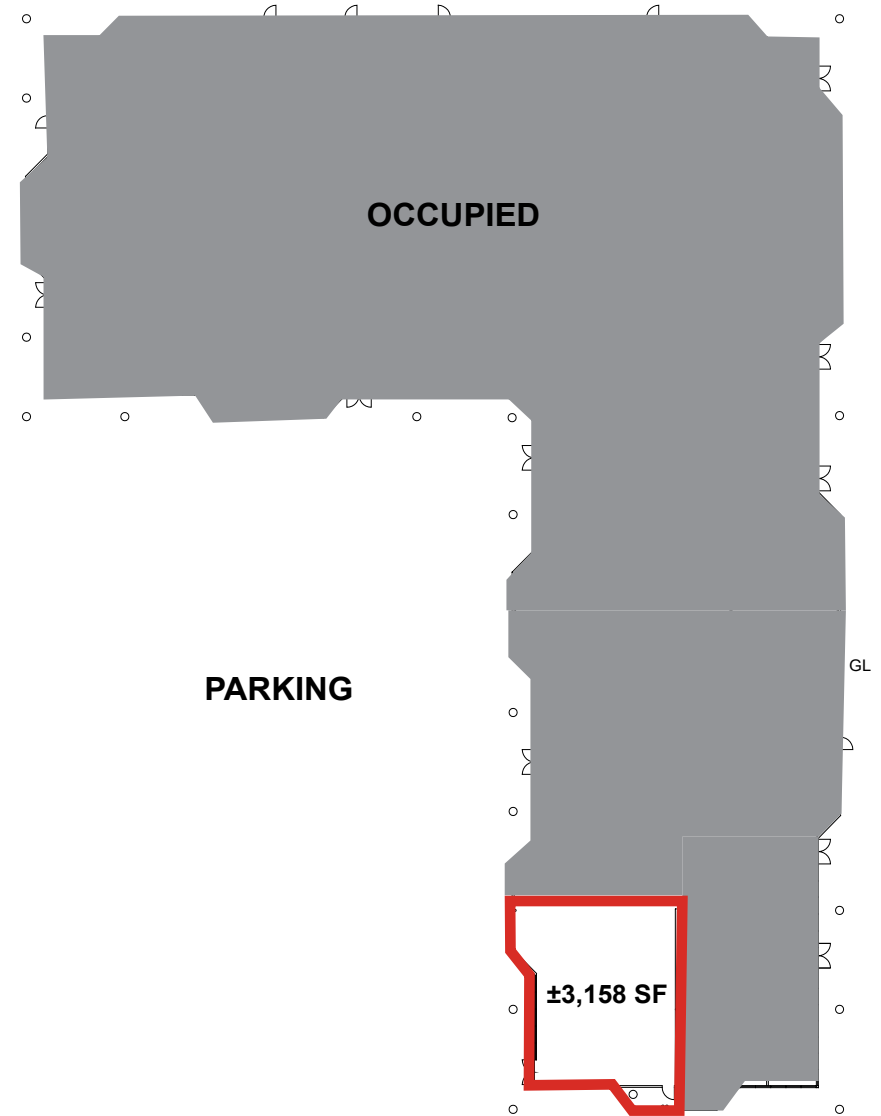
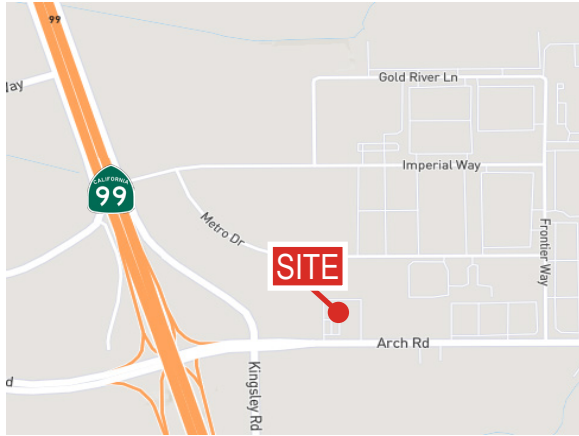
2800 W. March Lane, #310
Stockton, CA 95219

Tim Mustin
Vice President
tim.mustin@am.jll.com
+1 209 390 1687
RE License #01857876



3663 ARCH ROAD

STOCKTON • CALIFORNIA



2800 W. March Lane, #310
Stockton, CA 95219

Tim Mustin
Vice President
tim.mustin@am.jll.com
+1 209 390 1687
RE License #01857876

©2017 Jones Lang LaSalle IP, Inc. All rights reserved. The information contained in this document is proprietary to Jones Lang LaSalle and shall be used solely for the purposes of evaluating this proposal. All such documentation and information remains the property of Jones Lang LaSalle and shall be kept confidential. Reproduction of any part of this document is authorized only to the extent necessary for its evaluation. It is not to be shown to any third party without the prior written authorization of Jones Lang LaSalle. All information contained herein is from sources deemed reliable; however, no representation or warranty is made as to the accuracy thereof. Jones Lang LaSalle Brokerage, Inc. Real Estate License #01856260

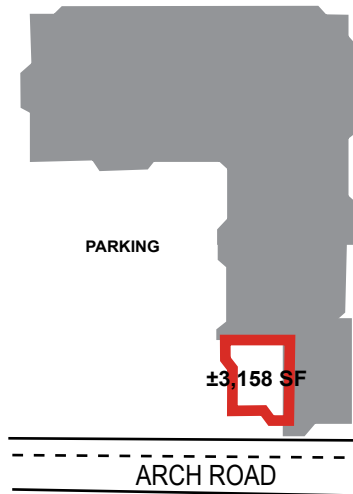
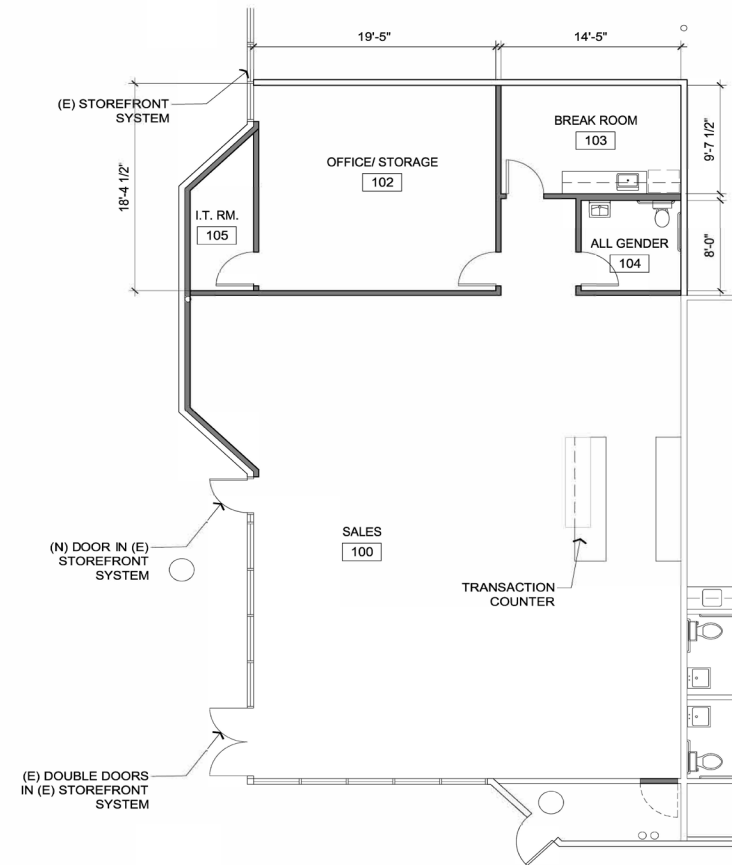
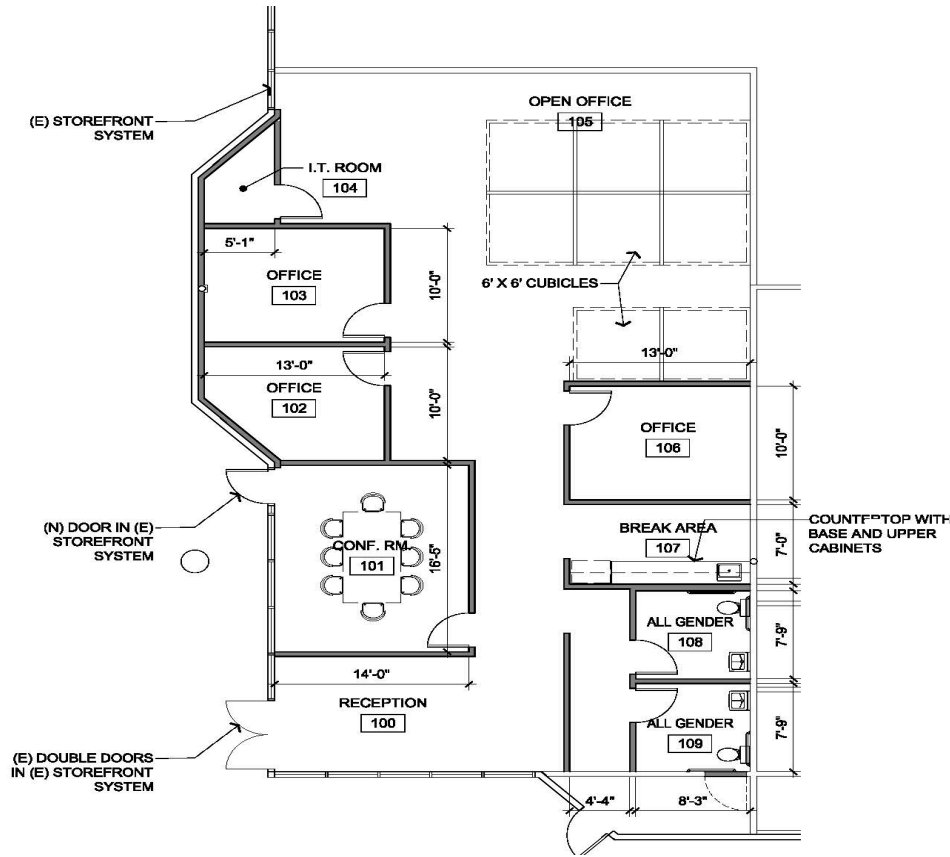
3663 ARCH ROAD

STOCKTON • CALIFORNIA

CONCEPTUAL PLANS

Office Space

Retail Space



CONTACT



2800 W. March Lane #310
Stockton, CA 95219

Tim Mustin
Vice President
tim.mustin@am.jll.com
209 390 1687
CA LIC 01857876

