

717 14TH ST NW

Washington, DC 20005

Office For Lease

7,995 - 10,848 SF



Leasing Information:
202.513.6700

Adam Biberaj
202.513.6736
abiberaj@lpc.com

Merrill Turnbull
202.513.6713
mturnbull@lpc.com

Jae Lee
202.513.6718
jlee@lpc.com

Tim Whitebread
202.513.6712
twhitebread@lpc.com

Lincoln

Lincoln Property Company
101 Constitution Avenue, NW Suite 325 East
Washington, DC 20001

www.lpc.com

717 14TH ST NW

Washington, DC 20005

Office For Lease



Property Highlights

- Close proximity to White House
- Full floors opportunities
- Two private balconies
- Easily accessible, blocks from both McPherson Square Metro Station and Metro Center

Availabilities

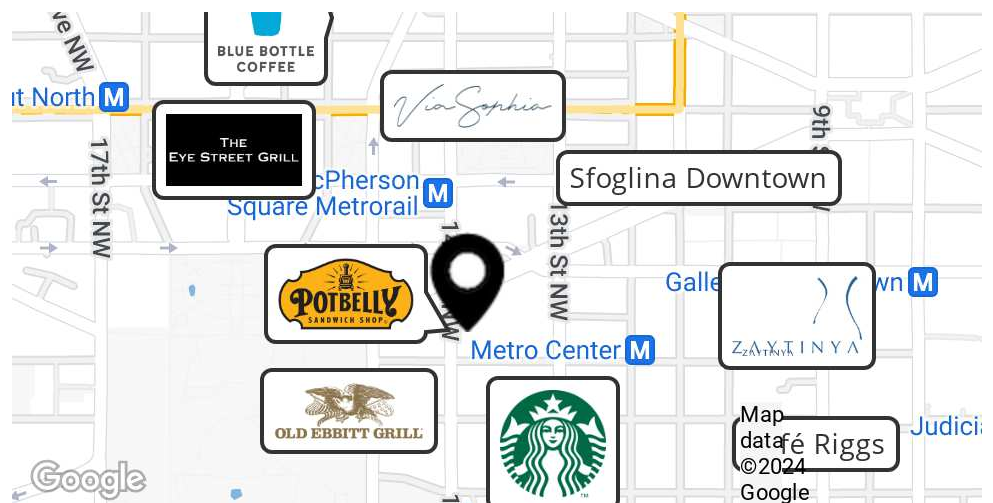
Suite 200
Suite 500
Suite 900
Suite 1200

SF

10,848 SF
10,848 SF
10,362 SF
7,995 SF

Date Available

Immediately
Immediately
Immediately
Immediately



Adam Biberaj

202.513.6736
abiberaj@lpc.com

Merrill Turnbull

202.513.6713
mturnbull@lpc.com

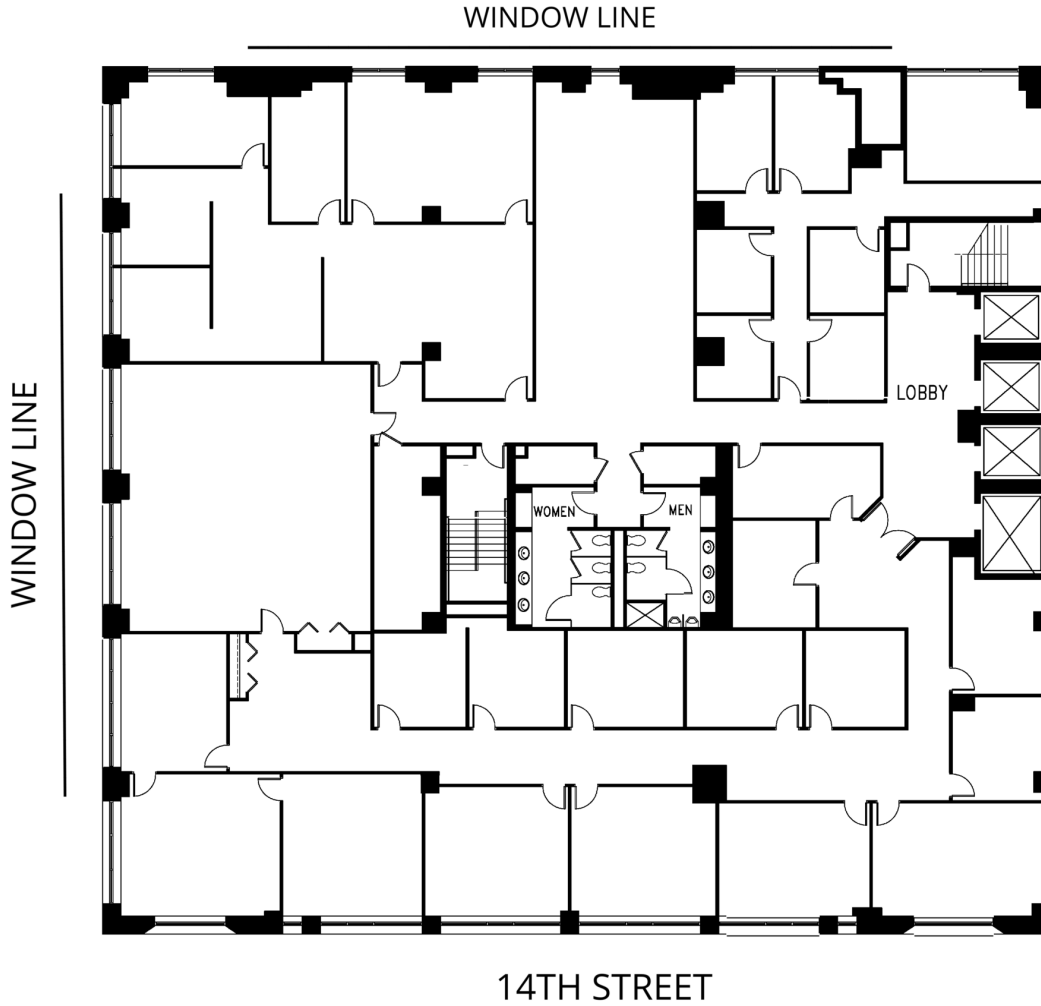
Jae Lee

202.513.6718
jlee@lpc.com

Tim Whitebread

202.513.6712
twhitebread@lpc.com

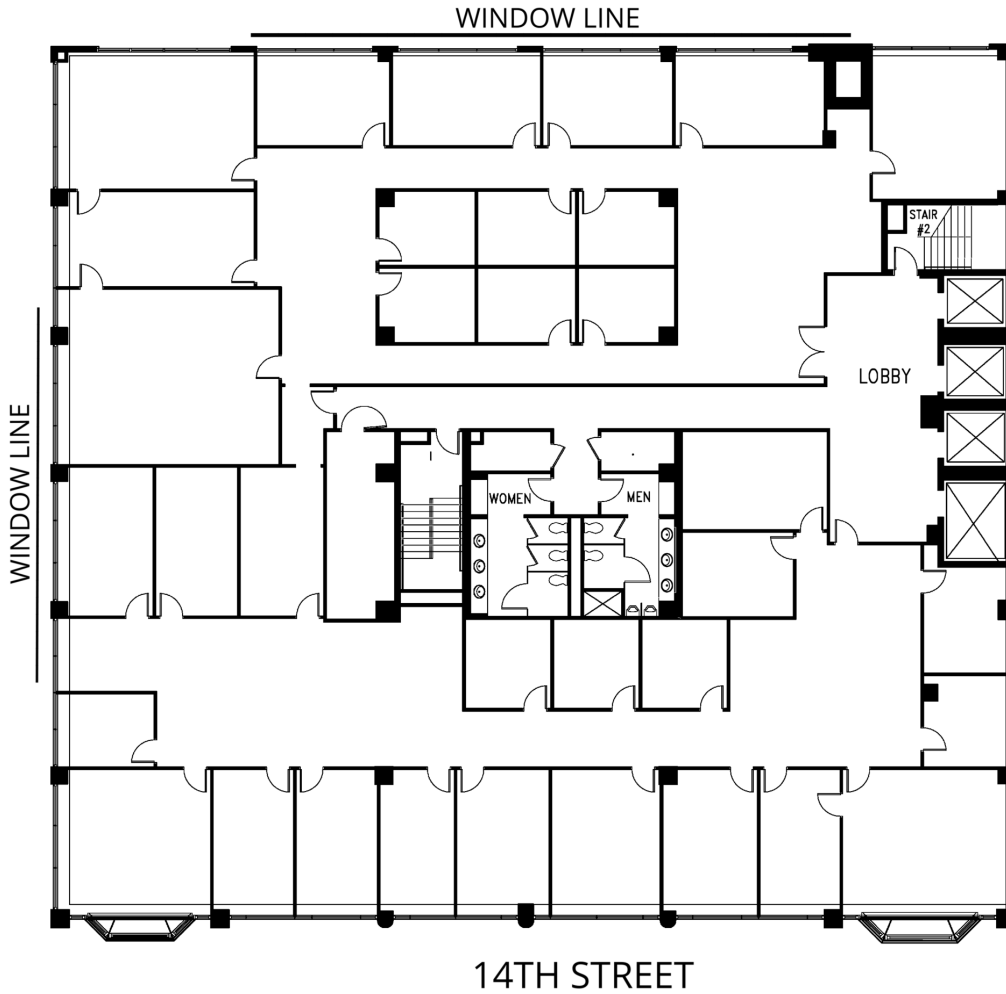
Lincoln



Suite	Size	Description
Suite 200	10,848 SF	Available Immediately

Adam Biberaj **Merrill Turnbull** **Jae Lee** **Tim Whitebread**
202.513.6736 202.513.6713 202.513.6718 202.513.6712
abiberaj@lpc.com mturnbull@lpc.com jlee@lpc.com twhitebread@lpc.com

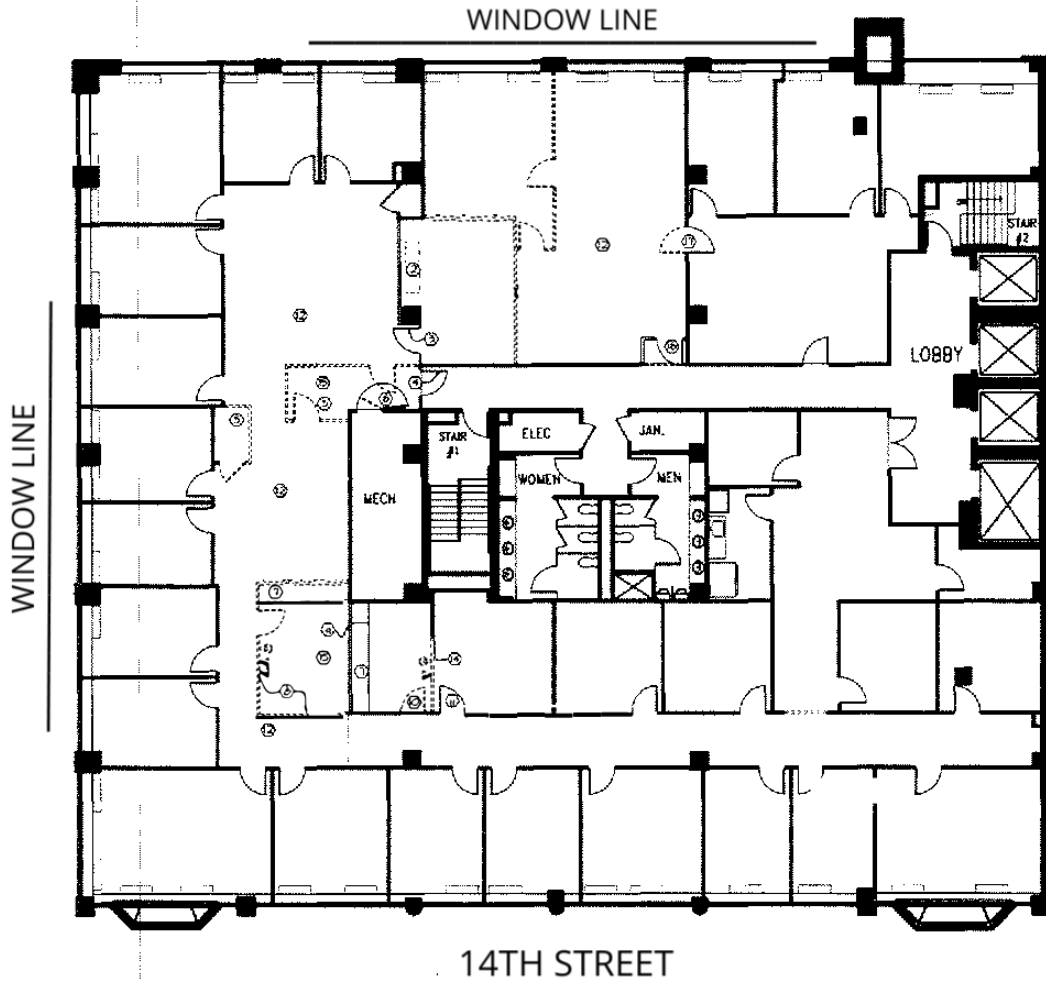




Suite	Size	Description
Suite 500	10,848 SF	Available Immediately

Adam Biberaj **Merrill Turnbull** **Jae Lee** **Tim Whitebread**
202.513.6736 202.513.6713 202.513.6718 202.513.6712
abiberaj@lpc.com mturnbull@lpc.com jlee@lpc.com twhitebread@lpc.com

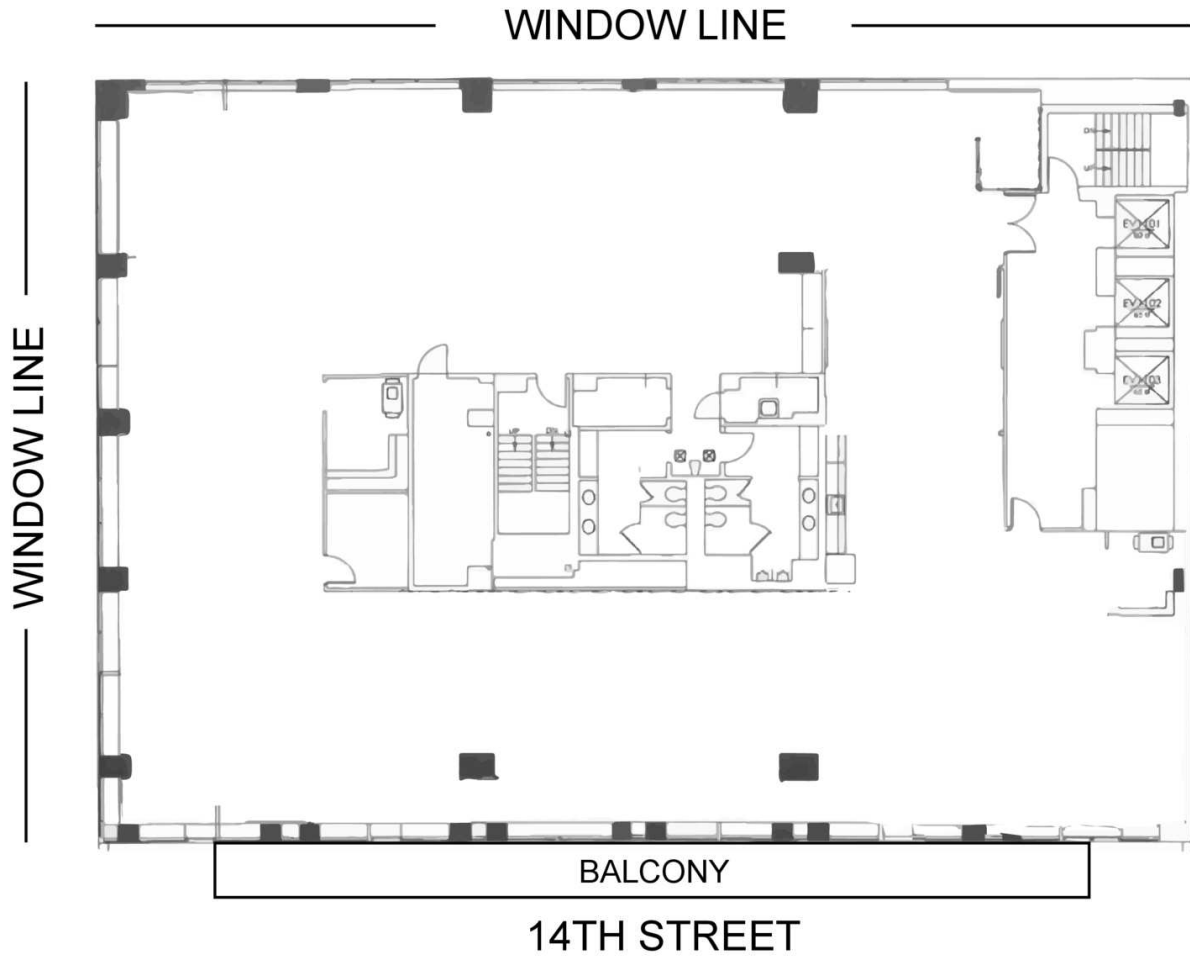




Suite	Size	Description
Suite 900	10,362 SF	Available Immediately

Adam Biberaj **Merrill Turnbull** **Jae Lee** **Tim Whitebread**
 202.513.6736 202.513.6713 202.513.6718 202.513.6712
 abiberaj@lpc.com mturnbull@lpc.com jlee@lpc.com twhitebread@lpc.com





Suite	Size	Description
Suite 1200	7,995 SF	Includes Private Balcony. Available Immediately

Adam Biberaj Merrill Turnbull Jae Lee Tim Whitebread
202.513.6736 202.513.6713 202.513.6718 202.513.6712
abiberaj@lpc.com mturnbull@lpc.com jlee@lpc.com twhitebread@lpc.com





717 14TH ST NW

Washington, DC 20005

Leasing Information:
202.513.6700

Adam Biberaj
202.513.6736
abiberaj@lpc.com

Merrill Turnbull
202.513.6713
mturnbull@lpc.com

Jae Lee
202.513.6718
jlee@lpc.com

Tim Whitebread
202.513.6712
twhitebread@lpc.com

Lincoln

Lincoln Property Company
101 Constitution Avenue, NW Suite 325 East
Washington, DC 20001

www.lpc.com