



38.20± ACRES - BLOSSOM TRAIL PROJECT

SWC of Manning & Zumwalt Avenues Reedley, California

AVAILABLE FOR SALE

For information, please contact:

Jeff Wolpert, ALC
Senior Vice President - Land Division
t 559-447-6295
jwolpert@pearsonrealty.com
CA RE Lic #01487371

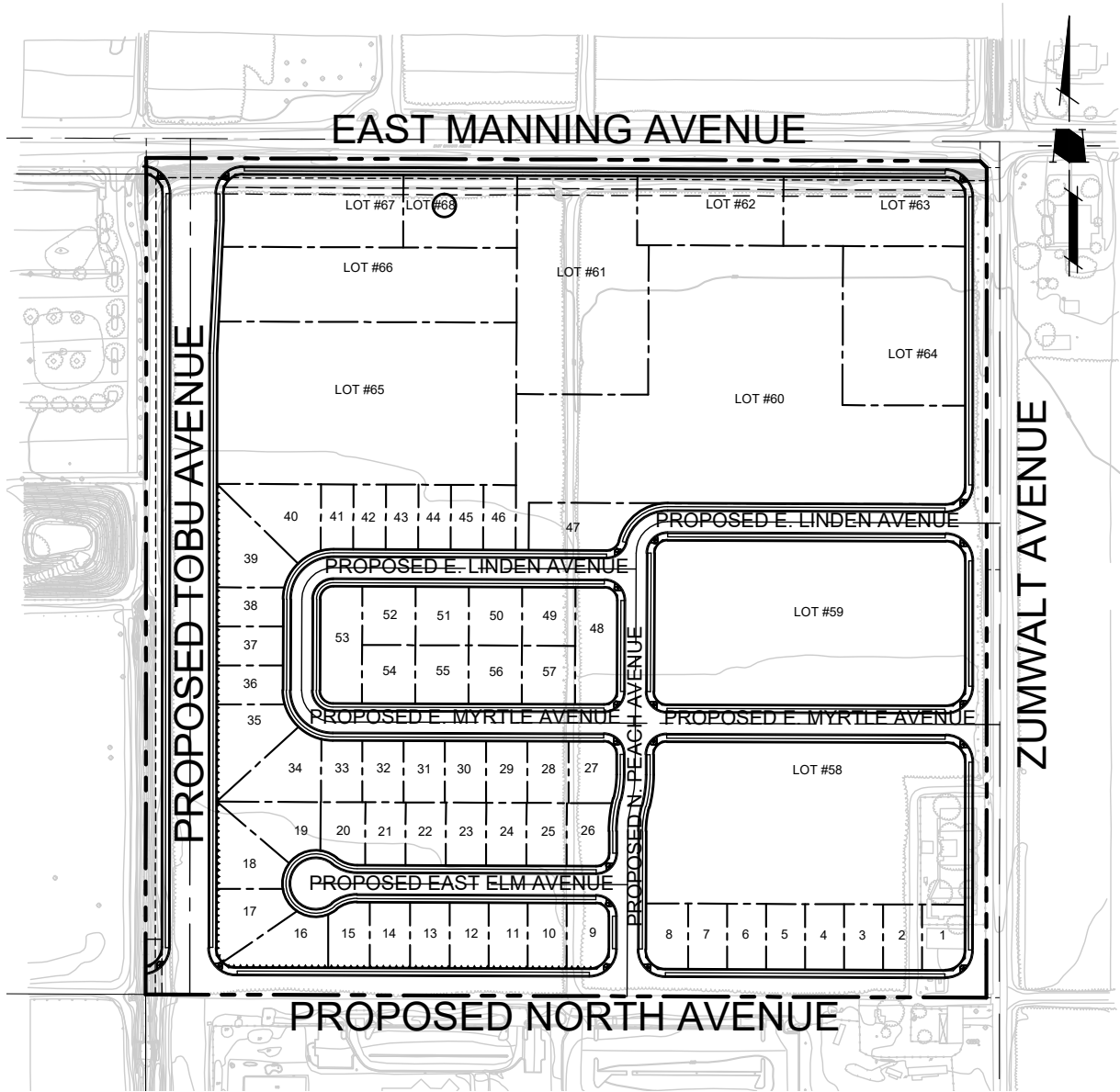
NEWMARK
PEARSON COMMERCIAL

Independently Owned and Operated | Corporate License #00020875 | newmarkpearson.com

FRESNO OFFICE: 7480 N. Palm Ave. #101, Fresno, CA 93711, t 559-432-6200 | VISALIA OFFICE: 3447 S. Demaree St., Visalia, CA 93277, t 559-732-7300
The distributor of this communication is performing acts for which a real estate license is required. The information contained herein has been obtained from sources deemed reliable but has not been verified and no guarantee, warranty or representation, either express or implied, is made with respect to such information. Terms of sale or lease and availability are subject to change or withdrawal without notice.

SWC OF MANNING & ZUMWALT AVENUE - REEDLEY, CA

Vesting Tract Map #6129





For information, please contact:

Jeff Wolpert, ALC

Senior Vice President - Land Division

t 559-447-6295

jwolpert@pearsonrealty.com

CA RE Lic #01487371

NEWMARK
PEARSON COMMERCIAL

Independently Owned and Operated | Corporate License #00020875 | newmarkpearson.com

FRESNO OFFICE: 7480 N. Palm Ave. #101, Fresno, CA 93711, t 559-432-6200 | **VISALIA OFFICE:** 3447 S. Demaree St., Visalia, CA 93277, t 559-732-7300

The distributor of this communication is performing acts for which a real estate license is required. The information contained herein has been obtained from sources deemed reliable but has not been verified and no guarantee, warranty or representation, either express or implied, is made with respect to such information. Terms of sale or lease and availability are subject to change or withdrawal without notice.