

264,468 SF | 55 ACRES

MOORE ST COMMERCE CENTER

Permit Ready Q1 2023 | For Lease or Build-To-Suit (By Owner) | Zoned Heavy Industrial (M2)



647 Moore Street | Covington, GA

STATE OF THE ART FEATURES

- 264,468 SF Rear-Load (320' x 845')
- 36' Clear Height
- 54' x 52' Typical Column Spacing with 60' Speed Bays
- 7" Thick 4,000 psi Unreinforced Floor Slab
- ESFR Sprinkler System (Meets FM Standards)
- Power: 277/480 Volt, 3 Phase, 4 Wire, 2,000 Amp
- 60-mil TPO Roof with R-20 Roof Insulation for Cooler Warehouse Environment and 20-year NDL Warranty
- Clerestory Windows for Natural Lighting
- 44 (9' x 10') Dock Doors
- 2 (12' x 10') Ramped Drive-In Doors
- 185' Truck Court Depth
- 47 Trailer Spaces (expandable to 233)
- 194 Auto Parking Spaces
- City of Covington – Zoned Heavy Industrial (M2)
- Site can be modified to tenant use/specs
- Potential Other Uses for BTS Consideration: truck parking, truck terminal, misc. industrial outside storage.



DRIVE DISTANCES

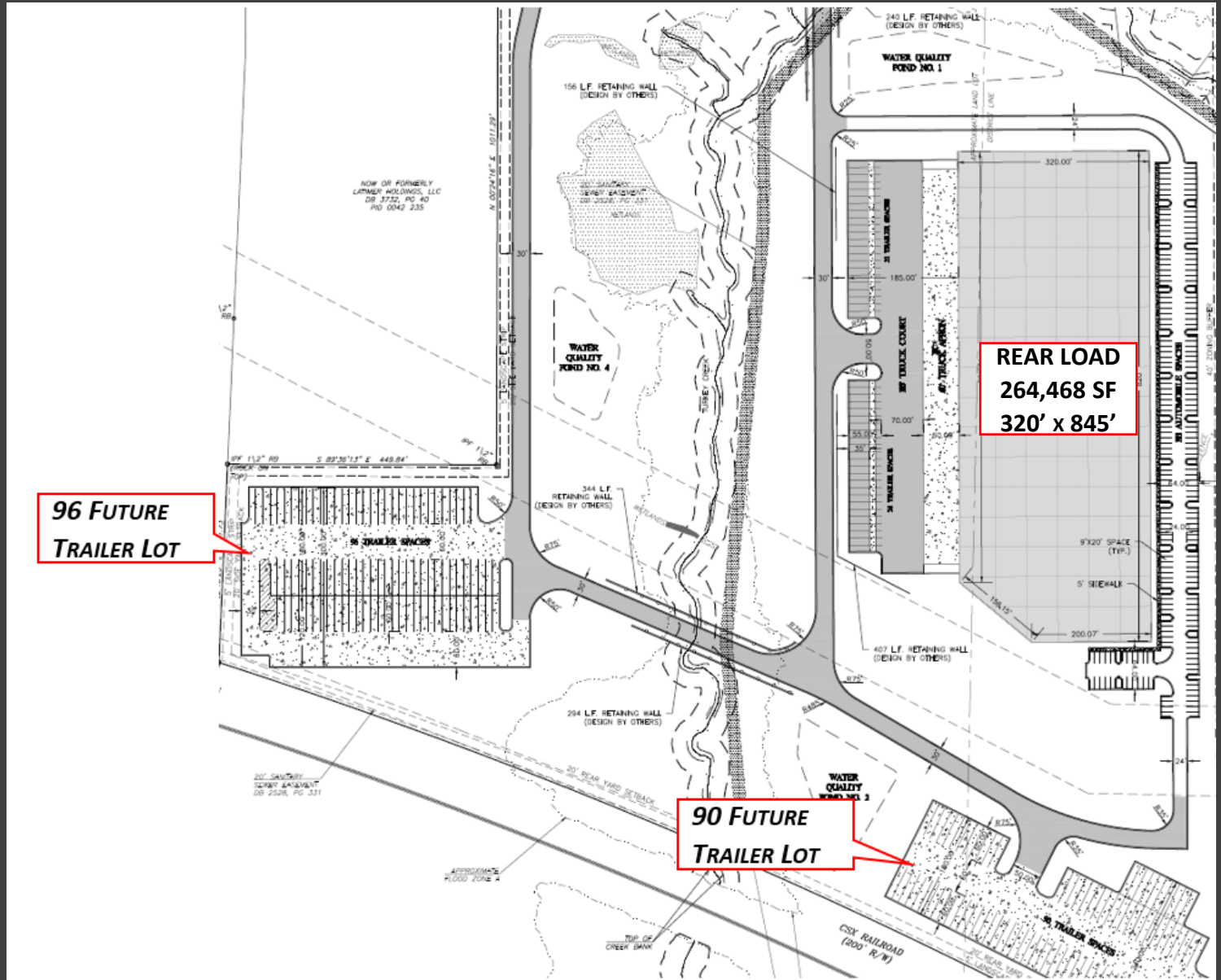
- I-20: 2.5 miles
- I-285: 26.0 miles
- Hartsfield-Jackson Atlanta Int'l Airport : 36.0 miles

FOR MORE INFORMATION CONTACT:

Chris Knightly
978.460.2459
cknightly@cameronpropertyco.com

CAMERON
property company

MOORE ST COMMERCE CENTER SITE PLAN



FOR MORE INFORMATION CONTACT:

Chris Knightly

978.460.2459

cknightly@cameronpropertyco.com

CAMERON
property company

ACCESS AERIAL



FOR MORE INFORMATION CONTACT:

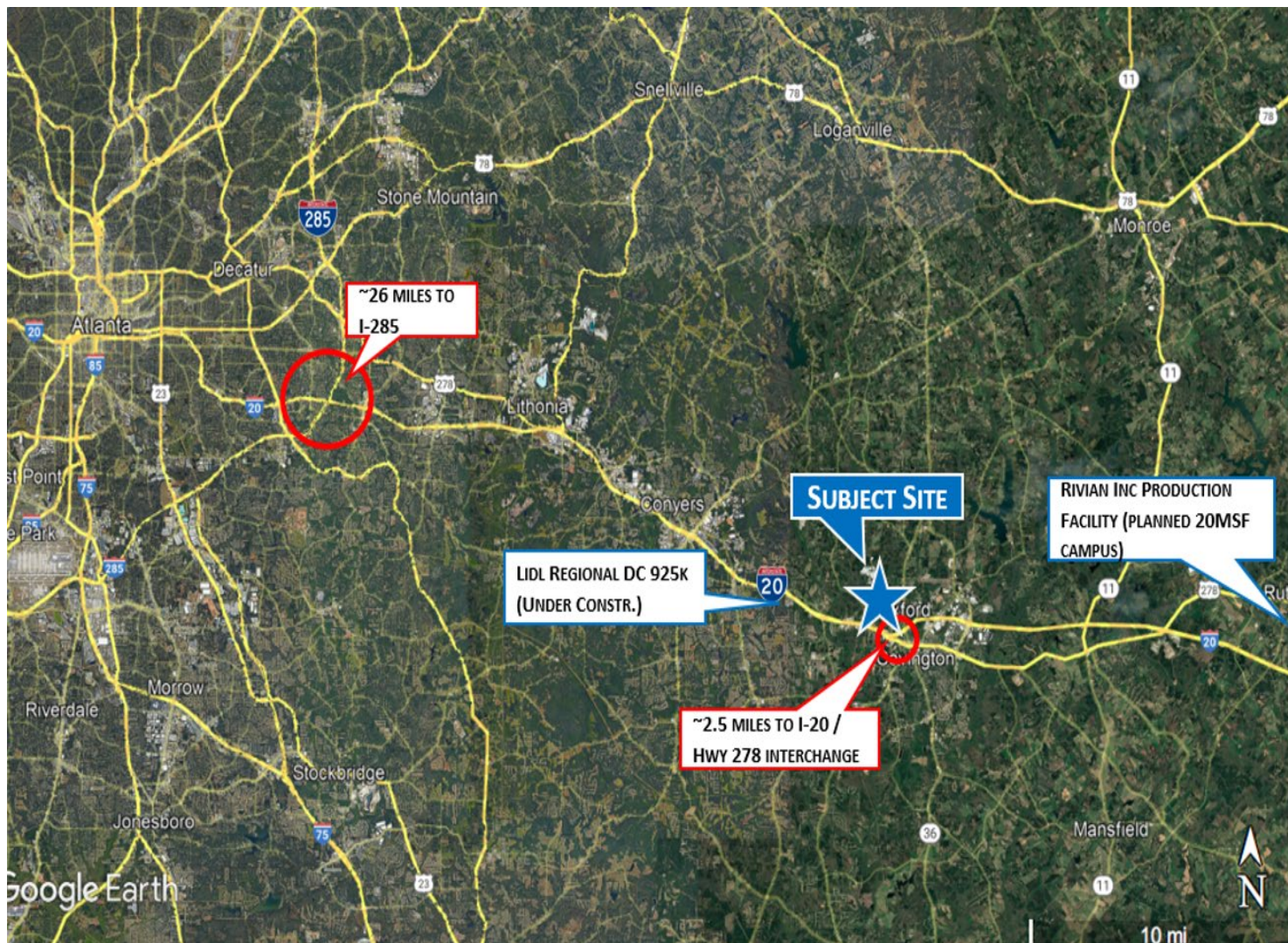
Chris Knightly

978.460.2459

cknightly@cameronpropertyco.com

CAMERON
property company

SITE AERIAL



FOR MORE INFORMATION CONTACT:

Chris Knightly

978.460.2459

cknightly@cameronpropertyco.com

CAMERON
property company