



Office

6600 Taft Street

FOR LEASE

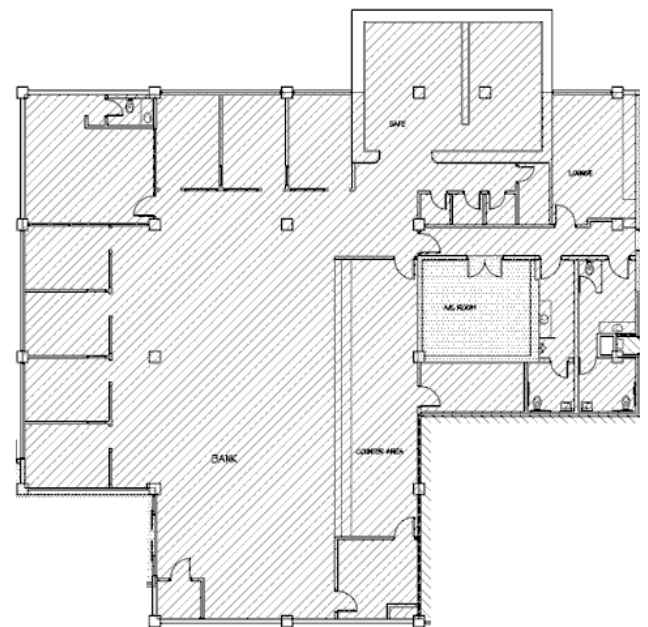
6600 Taft Street, Hollywood, FL 33024

Property Features

- Aggressive lease rates
- Prime location on Taft Street
- Secured building with 24-hour access
- Abundant parking – 4/1,000 square feet
- Locally owned and professionally managed

Location Features

- Prominent frontage and exposure
- Daily Traffic count over 18,000 vehicles per day
- Convenient access to Florida's Turnpike, I-95, & SR 84
- Minutes from the Fort Lauderdale International Airport (FTL)
- Nearby restaurants and shopping



1st Floor - 7,261 SF

For More Information

Timothy Merriman Jr.

+1 954 668 5315

tmerriman@naifl.com

For more listings visit: naimia-ftl.com/properties

