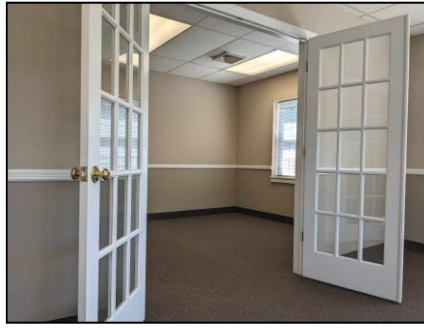




# Professional Office Suite

6515 Main Street, #14, Trumbull, CT

## 1,094 SF – 2<sup>nd</sup> Floor Unit for Lease



**Located in the Long Hill section of Trumbull with Excellent access to Merritt Parkway, Route 25 to I-95, Main Street and Route 111 corridors. Across from Long Hill Green and two new shopping plazas, with numerous restaurants, retail shopping and other businesses nearby.**

Desirable 2<sup>nd</sup> floor corner unit sublease in elevatored building with security features. Interior & exterior renovations. Highly visible location with strong traffic count of 12,400 vehicles/day. Ample parking, attractive pole sign, and updated landscaping.

Excellent floor plan with reception area with closet, back office, large corner office with windows and an additional office or conference room with windows. Ideal for various types of professional use or behavioral health use.

**Space available: 1,094 SF**

**Rent price: \$1,700/mo + \$2.75/sf for electric**

***Call Steve Today at 203-260-1369!***

*The information above has been obtained from sources believed reliable. While we do not doubt its accuracy we have not verified it and make no guarantee, warranty or representation about it.*



**Stephen J. Hodson/Hodson Realty, Inc.**  
6515 Main St. , Trumbull, Ct. 06611  
Office: 203-268-7743  
Cell: 203-260-1369  
Steve@HodsonRealty.com  
www.HodsonCommercial.com



***Integrity. Quality. Experience. Service.***