

AN ICONIC SAN FRANCISCO RESTAURANT OPPORTUNITY

● WAYFARE TAVERN ●

PLEASE DO NOT DISTURB CURRENT TENANT

558 SACRAMENTO STREET

SAN FRANCISCO, CA

CATHERINE MEUNIER catherine@mavenproperties.com

PAM MENDELSON pam@mavenproperties.com

maven
RETAIL

558
SACRAMENTO STREET

FINANCIAL DISTRICT

SAN FRANCISCO, CA

558 SACRAMENTO STREET is situated in San Francisco's North Financial District. It is surrounded by excellent public transportation, trending shops, top-tier dining, posh hospitality, and many longtime destinations for Bay Area diners, tourists and locals. This space also enjoys proximity to major touristic landmarks such as the Transamerica Pyramid, Jackson Square, Cable Car, Chinatown, North Beach, and Financial District , as well as a multitude of nearby hotels and retail attractions. Several parking garages and the property is in close proximity to public transportation.

FEATURES

- Fully built-out restaurant
- Long term successful restaurant destination
- Beautiful brick & timer building consist of:
 - Ground Level - 2,290 SF
 - Second Level - 2,290 SF
 - Third Level - 2,290 SF
 - Fourth Level - 2,290 SF
 - Lower Level - 3,068 SF (with elevator access)
- Central location
- No zoning restriction for 41/47 ABC license
- Three private dining rooms/or special event spaces that will accommodate different venues for 14-80 people
- Outdoor seating on Leidesdorff Alley and Sacramento Street
- **OCCUPANCY:**
 - First Floor - 59
 - Second Floor - 45
 - Second Floor Private Room - 14
 - 3rd Floor - 45
 - 4th floor - 45
 - Total Occupancy - 208
- Available 1/1/2025





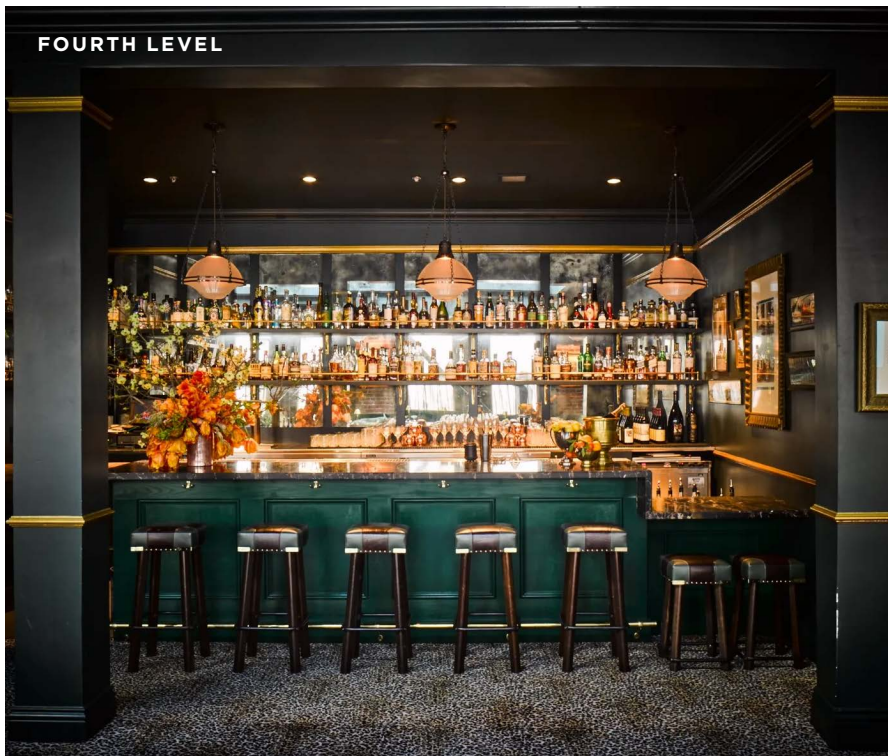
GROUND LEVEL



PRIVATE DINING



FOURTH LEVEL



FOURTH LEVEL



GROUND LEVEL



SECOND LEVEL



THIRD LEVEL



THIRD LEVEL



FOURTH LEVEL

The neighborhood surrounding 558 Sacramento Street in San Francisco is situated in the heart of the city's Financial District. It places you right in the midst of bustling streets lined with high-rise office buildings, corporate headquarters, and professional services firms.

The area exudes a vibrant energy during weekdays, with businesses, professionals and tourists navigating the sidewalks. This location is the perfect destination in the evenings and weekends when the offices close, offering a more serene atmosphere.

Despite its primarily commercial nature, there are pockets of residential buildings interspersed throughout the neighborhood, catering to those who prefer to live close to Downtown and Financial District. The neighborhood surrounding 558 Sacramento Street offers a unique blend of corporate sophistication, urban convenience, and cultural richness, making it an appealing destination for both work and leisure in San Francisco.

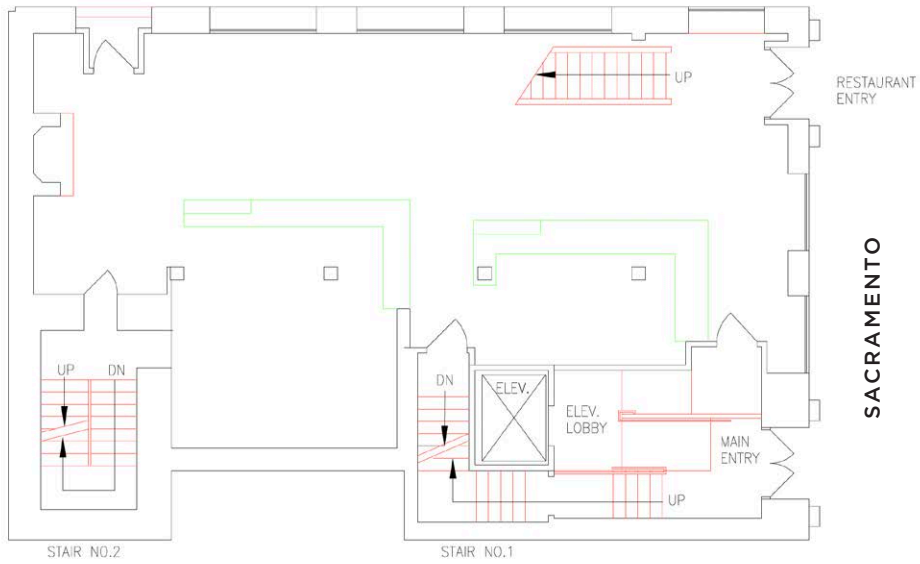
The proximity to landmarks such as the Transamerica Pyramid, a short distance to Jackson Square, Embarcadero Center, and Ferry Building adds to the allure of the area. You'll also find cultural attractions within reach, such as the San Francisco Museum of Modern Art (SFMOMA) and the Contemporary Jewish Museum.

Transportation options are plentiful, with easy access to public transit, including BART, Muni bus lines, and the cable car, making it convenient to explore other parts of the city or commute to different areas within the Bay Area.

FLOOR PLAN

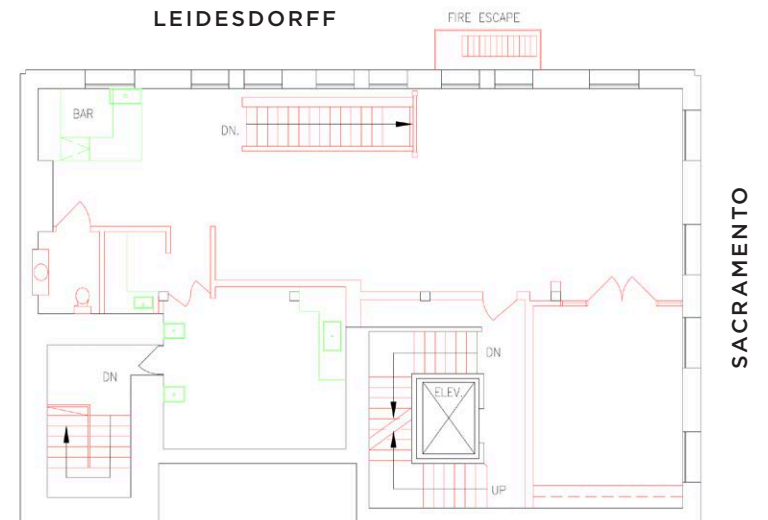
GROUND LEVEL

± 2,290 SF



SECOND LEVEL

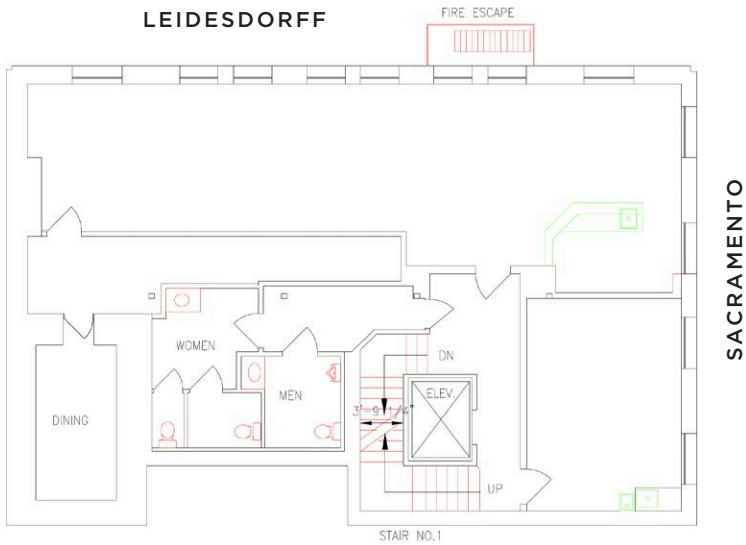
± 2,290 SF



THIRD LEVEL

± 2,290 SF

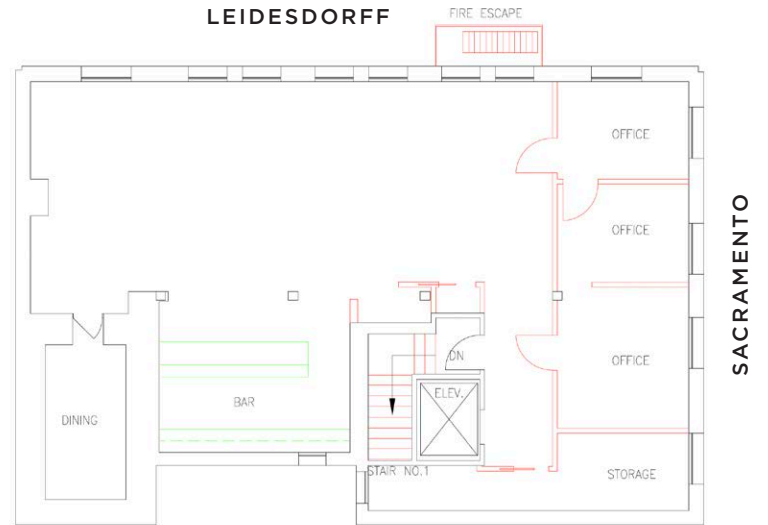
LEIDESDORFF



FOURTH LEVEL

± 2,290 SF

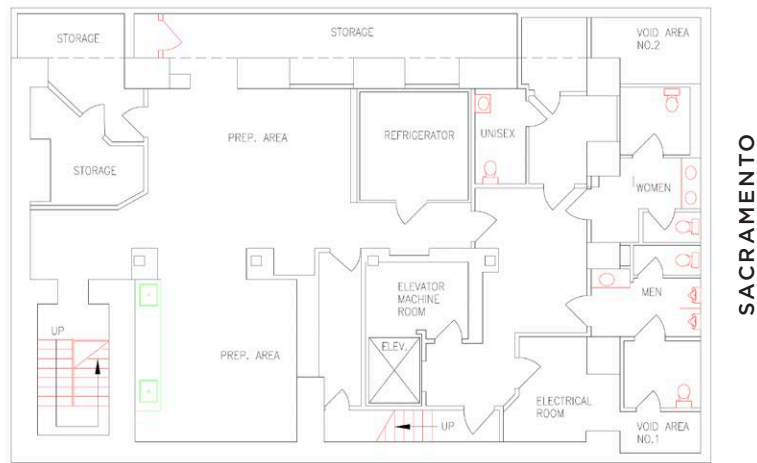
LEIDESDORFF



LOWER LEVEL

± 3,068 SF

LEIDESDORFF



FINANCIAL DISTRICT

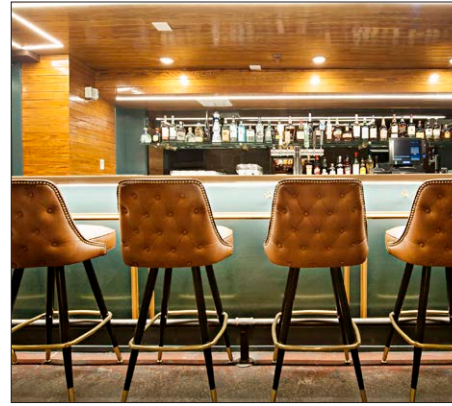
SAN FRANCISCO, CA



THOM BROWNE



WILLIAM STOUT



HIGH HORSE



ROKA AKOR



ZIMMERMAN



MAISON NICO



ISABEL MARANT



KOKKARI ESTIATORIO



THE SHOTA



PERBACCO



COTOGNA



BIX



WALK SCORE 100

TRANSIT SCORE 100

BIKE SCORE 88



maven
RETAIL

CONTACT

CATHERINE MEUNIER

office 415.806.5566
catherine@mavenproperties.com
DRE #01843732

PAM MENDELSON

office 415.404.6650
pam@mavenproperties.com
DRE #00953050

558
SACRAMENTO STREET

NOTICE: This information has been secured from sources we believe to be reliable but we make no representations, warranties, express or implied, as to the accuracy of the information. Listing broker has been given enough information to provide only a preliminary interest in the property. The materials are not to be considered fact. The information contained herein is not a substitute for thorough due diligence investigation. References to square footage, zoning, use, or age are approximate. Please contact the San Francisco Planning Department to verify zoning at (415) 558-6378, as neither broker or landlord represent that this space is suitable for your use. Tenant or Buyer must verify the information at their own expense and bears all the risk for any inaccuracies. By receiving these materials you are agreeing to the disclaimers set forth herein. DRE#01878802