

MAYFIELD COMMONS

Mayfield Heights, OH

COMMERCIAL LAND AVAILABLE FOR LEASE, LAND LEASE, OR SALE



- Mixed use development – leasing opportunities available in extremely dense east side suburb
- Announcing new tenant signed leases with Starbucks, Raising Cane's, Verizon, & Sheetz gas station
- Up to +/- 6 acres of prime commercial land

- Retail anchor opportunity available
- Medical Office and Senior Living opportunities available

FIRST MAYLAND PROPERTIES, LTD.



Tony Visconsi

📞 216.861.5349

✉ tonyvisconsi@hannacre.com

Michael J. Occhionero

📞 216.861.5291

✉ michaelocchionero@hannacre.com

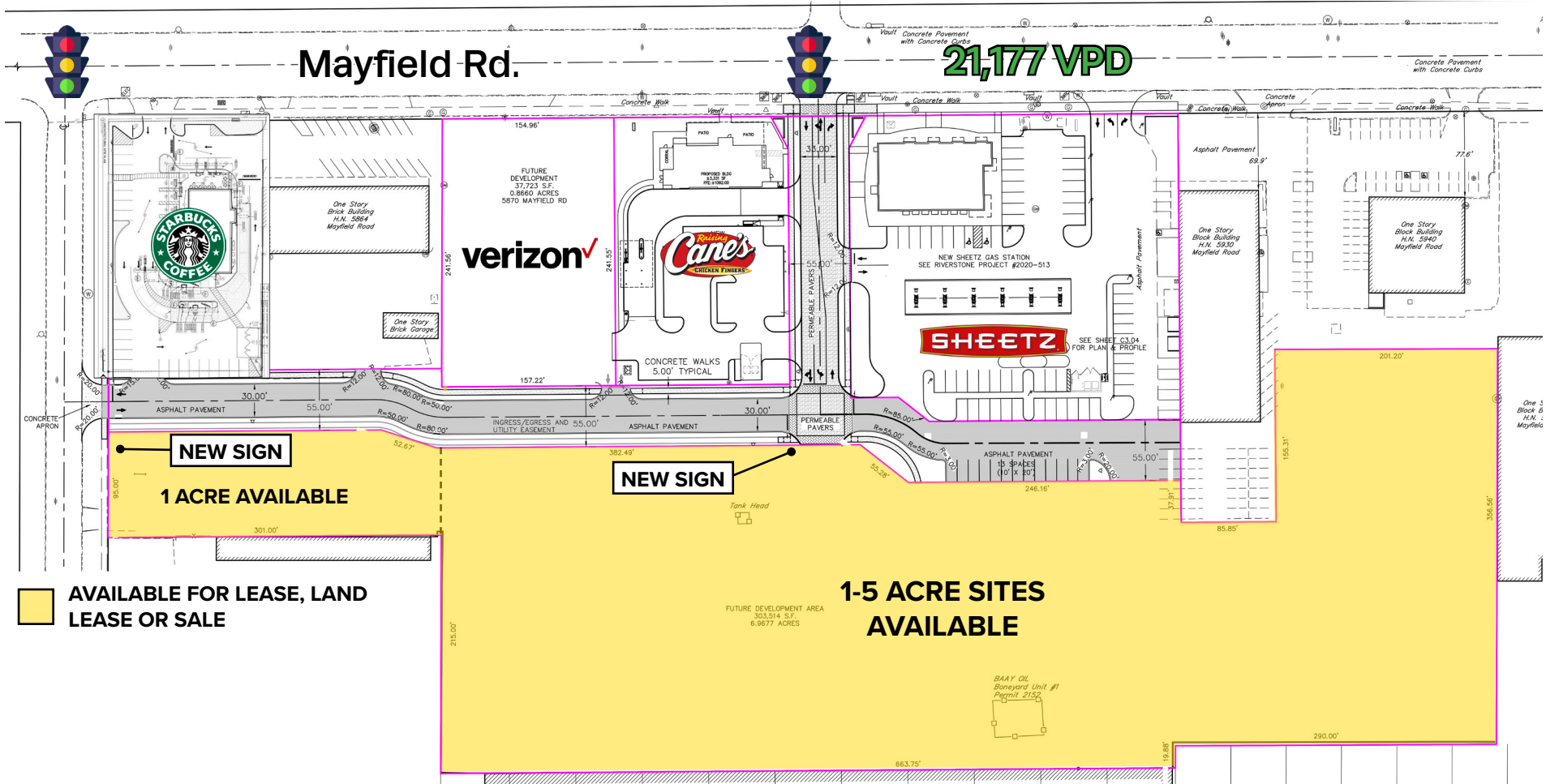
Sean Wall

📞 216.861.5498

✉ seanwall@hannacre.com

MAYFIELD COMMONS

Mayfield Heights, OH



Tony Visconsi

📞 216.861.5349

✉️ tonyvisconsi@hannacre.com

Michael J. Occhionero

📞 216.861.5291

✉️ michaelocchionero@hannacre.com

Sean Wall

📞 216.861.5498

✉️ seanwall@hannacre.com

MAYFIELD COMMONS

Mayfield Heights, OH



Tony Visconsi

📞 216.861.5349

✉️ tonyvisconsi@hannacre.com

Michael J. Occhionero

📞 216.861.5291

✉️ michaelocchionero@hannacre.com

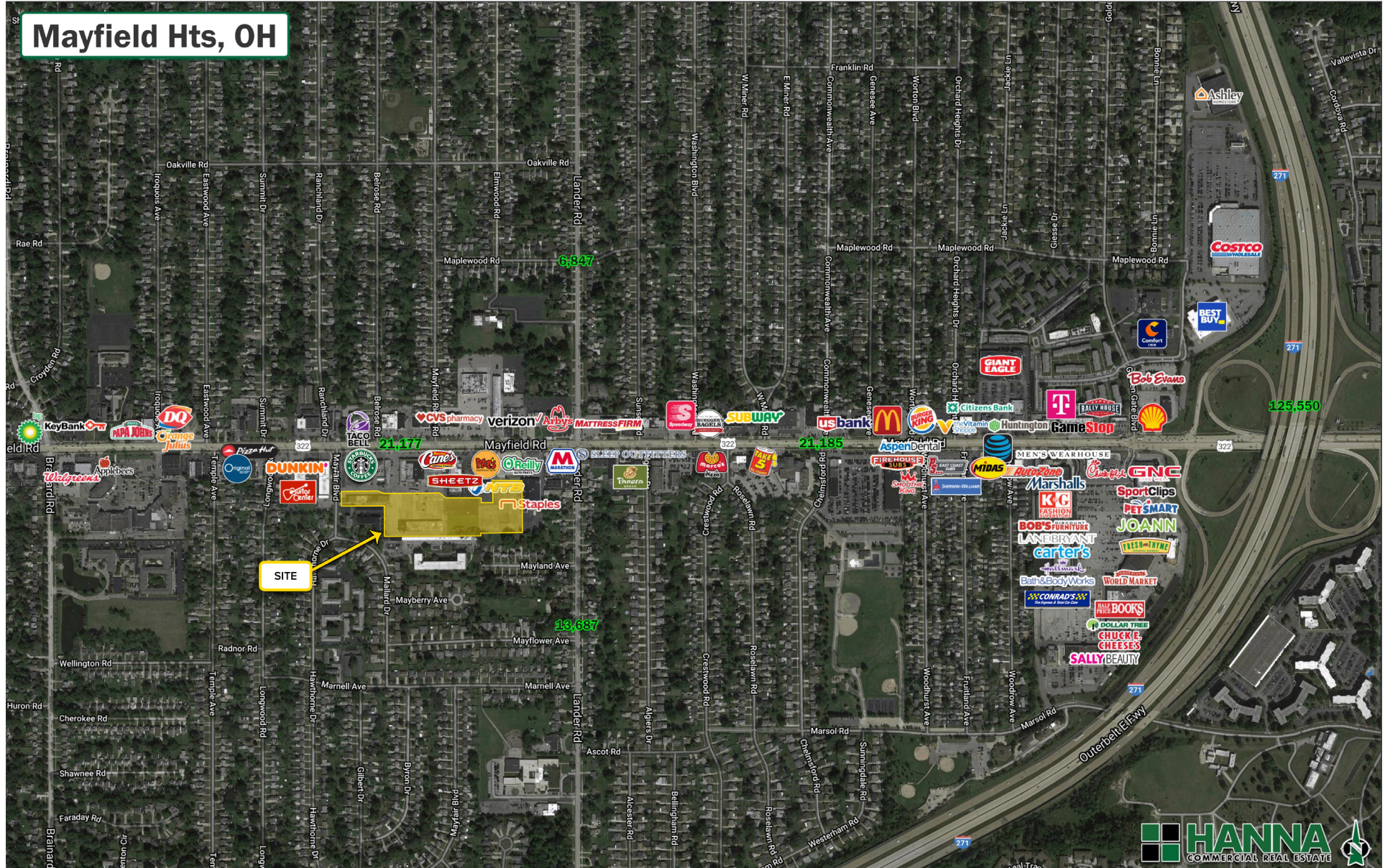
Sean Wall

📞 216.861.5498

✉️ seanwall@hannacre.com

MAYFIELD COMMONS

Mayfield Heights, OH



Tony Visconsi
📞 216.861.5349
✉ tonyvisconsi@hannacre.com

Michael J. Occhionero
📞 216.861.5291
✉ michaelocchionero@hannacre.com

Sean Wall
📞 216.861.5498
✉ seanwall@hannacre.com

MAYFIELD COMMONS

Mayfield Heights, OH

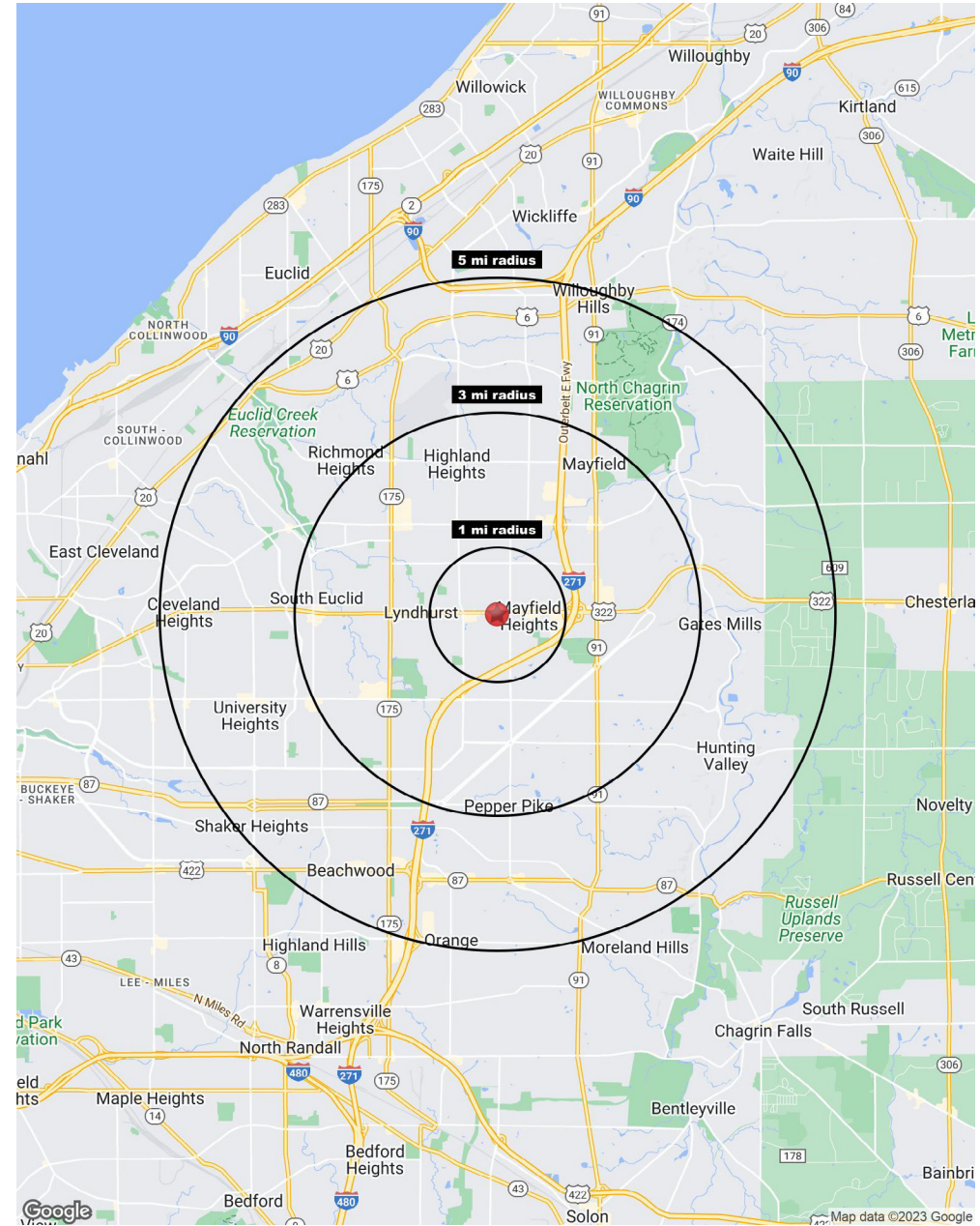
Summary Profile

2010-2020 Census, 2022 Estimates with 2027 Projections
 Calculated using Weighted Block Centroid from Block Groups



Lat/Lon: 41.5196/-81.4672

5880 Mayfield Rd Mayfield Heights, OH 44124	1 mi radius	3 mi radius	5 mi radius
Population			
2022 Estimated Population	14,270	68,619	166,095
2027 Projected Population	13,729	67,017	162,804
2020 Census Population	14,609	69,425	168,101
2010 Census Population	14,149	66,822	164,179
Projected Annual Growth 2022 to 2027	-0.8%	-0.5%	-0.4%
Historical Annual Growth 2010 to 2022	-	0.2%	-
2022 Median Age	39.9	44.7	42.7
Households			
2022 Estimated Households	6,236	30,889	72,104
2027 Projected Households	5,824	29,380	68,707
2020 Census Households	6,366	31,151	72,772
2010 Census Households	6,185	29,916	70,722
Projected Annual Growth 2022 to 2027	-1.3%	-1.0%	-0.9%
Historical Annual Growth 2010 to 2022	-	0.3%	0.2%
Race and Ethnicity			
2022 Estimated White	74.9%	67.8%	57.3%
2022 Estimated Black or African American	15.5%	20.5%	32.5%
2022 Estimated Asian or Pacific Islander	4.3%	7.3%	5.8%
2022 Estimated American Indian or Native Alaskan	0.2%	0.1%	0.1%
2022 Estimated Other Races	5.1%	4.3%	4.3%
2022 Estimated Hispanic	3.9%	3.4%	3.4%
Income			
2022 Estimated Average Household Income	\$74,614	\$101,635	\$99,880
2022 Estimated Median Household Income	\$68,146	\$76,564	\$75,078
2022 Estimated Per Capita Income	\$32,698	\$45,935	\$43,534
Education (Age 25+)			
2022 Estimated Elementary (Grade Level 0 to 8)	2.9%	2.1%	2.0%
2022 Estimated Some High School (Grade Level 9 to 11)	3.2%	2.7%	3.4%
2022 Estimated High School Graduate	27.0%	21.5%	20.3%
2022 Estimated Some College	22.8%	17.4%	18.1%
2022 Estimated Associates Degree Only	7.2%	7.4%	7.7%
2022 Estimated Bachelors Degree Only	24.7%	27.1%	25.2%
2022 Estimated Graduate Degree	12.2%	21.6%	23.3%
Business			
2022 Estimated Total Businesses	428	3,044	7,946
2022 Estimated Total Employees	4,581	53,088	115,465
2022 Estimated Employee Population per Business	10.7	17.4	14.5
2022 Estimated Residential Population per Business	33.3	22.5	20.9



©2023, Sites USA, Chandler, Arizona, 480-491-1112 Demographic Source: Applied Geographic Solutions 11/2022, TIGER Geography - RS1
 This report was produced using data from private and government sources deemed to be reliable. The information herein is provided without representation or warranty.



Tony Visconsi
 📞 216.861.5349
 ✉ tonyvisconsi@hannacre.com

Michael J. Occhionero
 📞 216.861.5291
 ✉ michaelocchionero@hannacre.com

Sean Wall
 📞 216.861.5498
 ✉ seanwall@hannacre.com