

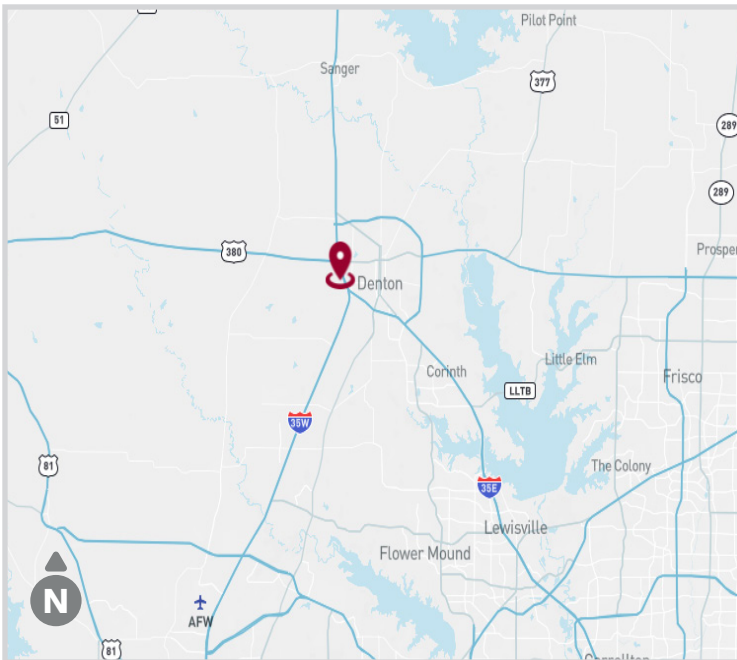
# FOR LEASE

## 55,803 SF DIVISIBLE TO 22,329 SF



### HIGH STREET GOLDEN POINT

3451 N Interstate 35 | Denton, TX 76207



### AVAILABILITY HIGHLIGHTS

- 55,803 SF with I-35 Frontage
- Divisible to  $\pm$ 22,329 SF
- 1,902 SF Spec Office
- Clear Height 32'
- 17 Dock High Doors
- 12 (30,000 lbs) Pit Levelers
- Heavy Car Parks
- ESFR Sprinkler System
- LED Lighting (30 FC at 36" with 15' Whips)
- White-boxed Warehouse

FOR LEASING INFORMATION:

**Adam Graham, SIOR, CCIM**  
agraham@lee-associates.com  
972.934.4011

**Corbin Blount, SIOR**  
cblount@lee-associates.com  
972.934.4035

**Chris Beggins**  
cbeggins@lee-associates.com  
972.934.4032

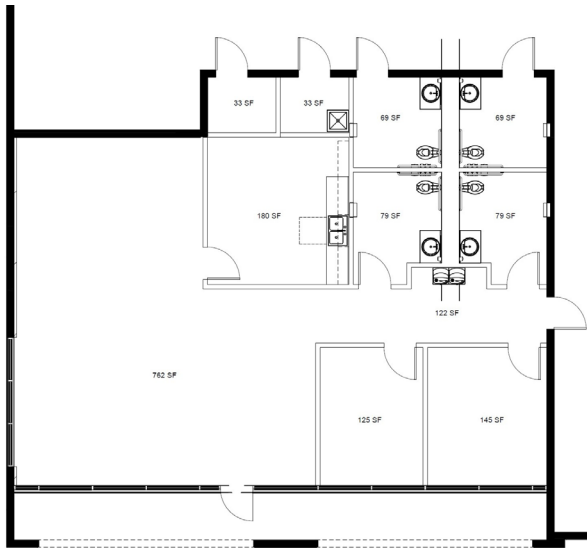
OWNED BY:



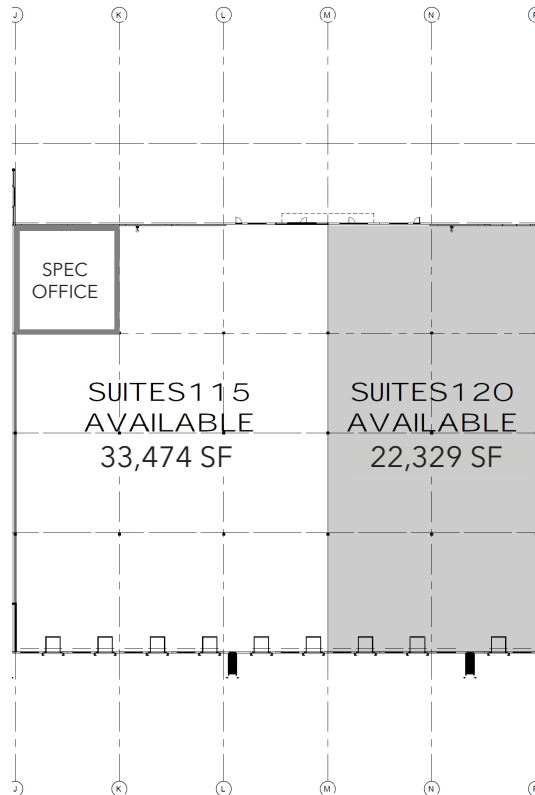
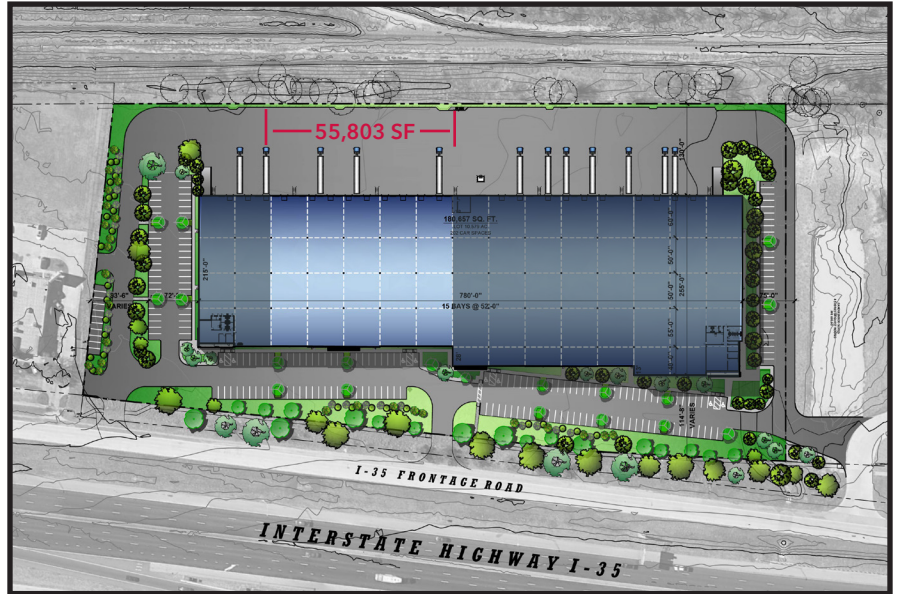
LEASING:



## OFFICE & SITE PLANS



1,902 OFFICE



All information furnished regarding property for sale, rental or financing is from sources deemed reliable, but no warranty or representation is made to the accuracy thereof and same is submitted to errors, omissions, change of price, rental or other conditions prior to sale, lease or financing or withdrawal without notice. No liability of any kind is to be imposed on the broker herein.

### FOR LEASING INFORMATION:

**Adam Graham, SIOR, CCIM**  
 agraham@lee-associates.com  
 972.934.4011

**Corbin Blount, SIOR**  
 cblount@lee-associates.com  
 972.934.4035

**Chris Beggins**  
 cbeggins@lee-associates.com  
 972.934.4032

### OWNED BY:



### LEASING:

