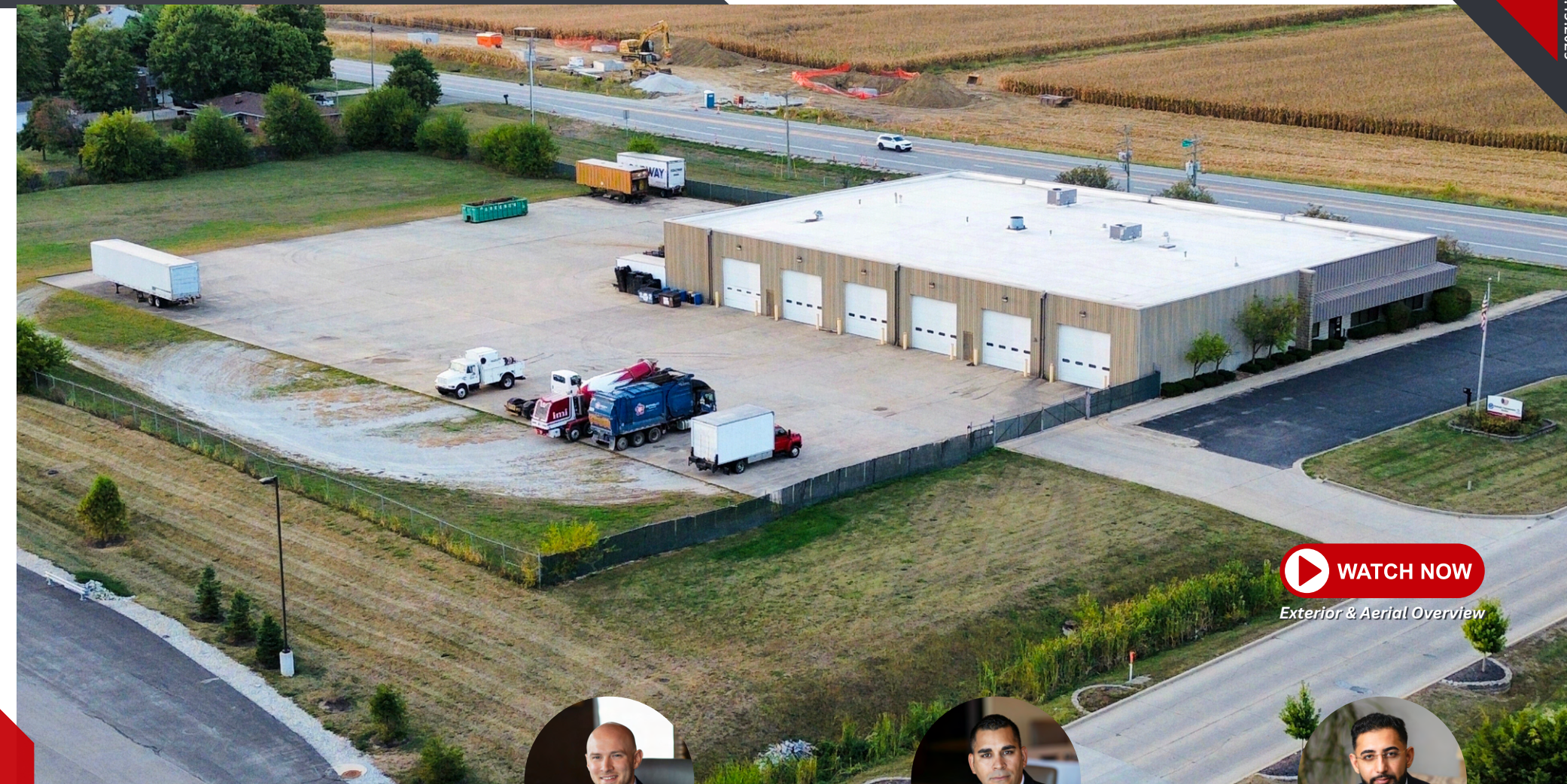


For Sale | Industrial Investment or Owner User Opportunity

Fleet Service & Repair Facility

 [450 N Enterprise Blvd, Lebanon, IN 46052](#)

V. 11.13.2025



 **WATCH NOW**

Exterior & Aerial Overview



James Storey  

317-519-5178

james@jdmpartners.com



Josh Moss 

317-413-7292

josh@jdmpartners.com



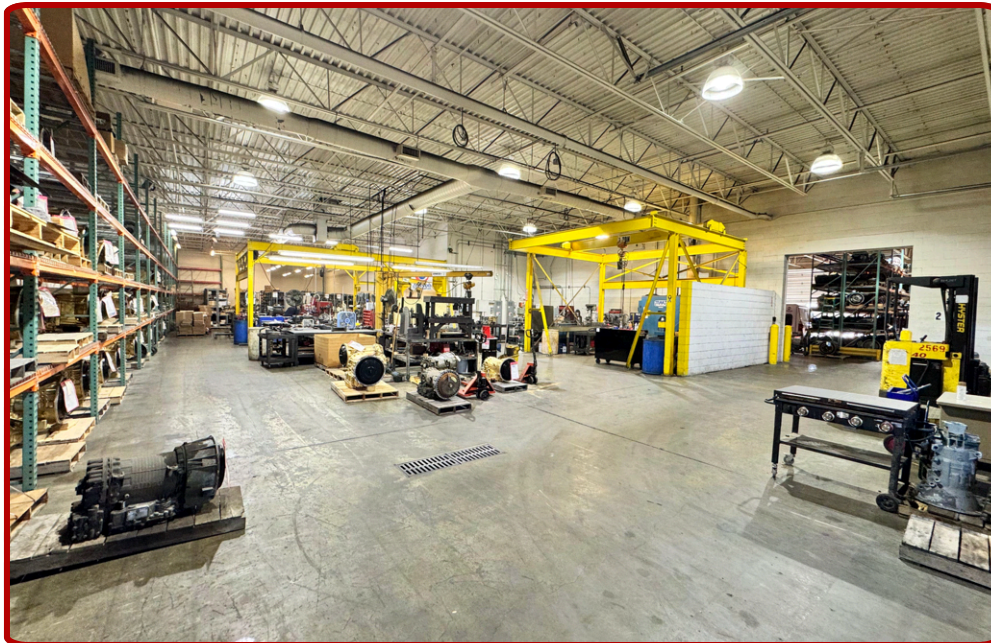
Jay Jossan

317-599-2643

jay@jdmpartners.com

JDM
PARTNERS

Interior Facility Images



Interior Office Images



Property Facts

» Property Address **450 N Enterprise Blvd, Lebanon, IN 46052**

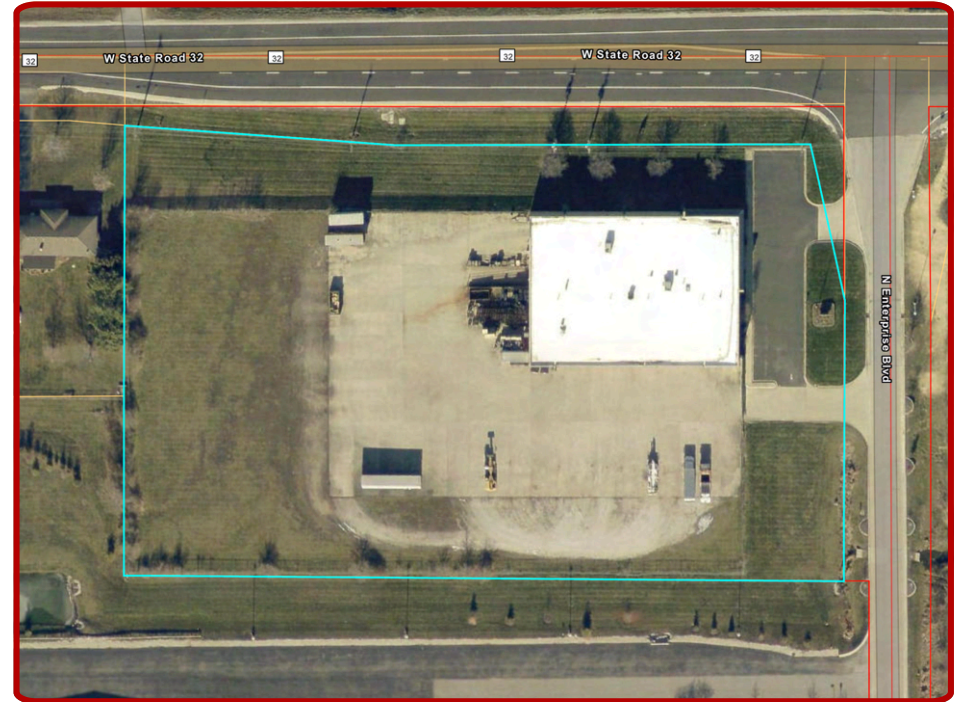
- **Total Building Size:** ±20,448 SF
- **Lot Size:** ±4.57 Acres
- **Property Zoning:** PBI (*Planned Business Industrial*)
- **Year Built:** 1995
- **Property Taxes:** \$21,997 Annualy (2024 Est.)
- **For Price Guidance:** Contact Brokers

» Highlights

- **Fenced & Gated Lot**
- **7 Drive-In Bays (16' x 10')**
- **1 Dock-High Door**
- **Large Concrete Yard**
- **Under 0.6 miles to I-65 Interchange**

» Permitted Uses (PBI – Planned Business Industrial):

- **Fleet Operations & Truck Terminal** – Semi-tractor/trailer parking, maintenance, and dispatch
- **Contractor's Warehouse & Equipment Storage** – Ideal for construction, utility, or service companies
- **Warehousing & Distribution Facility** – For logistics, supply chain, or regional distribution users
- **Equipment Sales, Service & Repair Facility** – Including farm, heavy machinery, and welding operations
- **Truck, Auto, or RV Sales & Service** – Suitable for dealerships, fleet repair, or vehicle storage



Aerial View with Property Boundary

Aerial View



➤ Next Steps for Acquisition

1. **Non-Disclosure Agreement (NDA) execution**
2. **Schedule Guided Site Tours**
3. **Submit and Negotiate Letter of Intent (LOI)**

LET'S CONNECT

HERE'S HOW WE HELP YOU SUCCEED



James Storey, , 
Co-Founder, Principal

317-519-5178
james@jdmpartners.com



Josh Moss, ,
Co-Founder, Principal

317-413-7292
joshe@jdmpartners.com



Jay Jossan
Senior Analyst

317-599-2643
jaye@jdmpartners.com



Analytical, data-driven approach



Advanced technology & cutting-edge tools



Comprehensive weekly or monthly seller reports



Off-market acquisition support



Targeted outreach through our extensive CRM network



Nationwide client representation



Tailored solutions for unique business objectives



Proven track record of successful results



SIOR®

SOCIETY OF INDUSTRIAL
AND OFFICE REALTORS®



Indiana
CCIM Chapter

JDM
PARTNERS

CONFIDENTIALITY & DISCLAIMER

The information contained in the following Marketing Brochure is proprietary and strictly confidential. It is intended to be reviewed only by the party receiving it from JDM Partners and should not be made available to any other person or entity without the written consent of JDM Partners. This Marketing Brochure has been prepared to provide summary, unverified information to prospective purchasers, and to establish only a preliminary level of interest in the subject property.

The information contained herein is not a substitute for a thorough due diligence investigation. JDM Partners has not made any investigation, and makes no warranty or representation, with respect to the income or expenses for the subject property, the future projected financial performance of the property, the size and square footage of the property and improvements, the presence or absence of contaminating substances, PCB's or asbestos, the compliance with State and Federal regulations, the physical condition of the improvements thereon, or the financial condition or business prospects of any tenant, or any tenant's plans or intentions to continue its occupancy of the subject property.

The information contained in this Marketing Brochure has been obtained from sources we believe to be reliable; however, JDM Partners has not verified, and will not verify, any of the information contained herein, nor has JDM Partners conducted any investigation regarding these matters and makes no warranty or representation whatsoever regarding the accuracy or completeness of the information provided. All potential buyers must take appropriate measures to verify all of the information set forth herein.

NON-ENDORSEMENT NOTICE

JDM Partners is not affiliated with, sponsored by, or endorsed by any commercial tenant or lessee identified in this marketing package. The presence of any corporation's logo or name is not intended to indicate or imply affiliation with, or sponsorship or endorsement by, said corporation or JDM Partners, its affiliates or subsidiaries, or any agent, product, service, or commercial listing of JDM Partners, and is solely included for the purpose of providing tenant lessee information about this listing to prospective customers.