

**TURN-KEY
MEDICAL OFFICE
SPACE FOR LEASE**

**900 S WOLFE ST
BALTIMORE, MD 21231**

**AVAILABLE TO
PROSPECTIVE
TENANTS**

- \$21 PER SQFT NNN
- HEALTH CARE
FOCUSED DESIGN,
ARCHITECTURAL &
CONSTRUCTION
- GENEROUS LANDLORD
CONSESSIONS
- CUSTOM TESTFITS
AVAILABLE



**MEDICAL & DENTAL OFFICE
LEASING OPPORTUNITIES
32,500 SF OF LEASING SPACE**



**ANTONIS ALEXANDRIS
PRINCIPAL BROKER**

240-997-6199

ANTONIS@ALEXANDRIANPARTNERS.COM



703-421-3310
45449 E SEVERN WAY, SUITE 155
STERLING, VA 20166

**A MODERN SPACE TO
ADVANCE YOUR
PRACTICE IN
HISTORIC FELLS POINT**

BUILDING HIGHLIGHTS



**EASY ACCESS TO
RESTURANTS**



**HEALTHCARE FOCUSED
OWNWESHIP**



**UPDATED COMMOM AREAS
& RESTROOMS**



**COVERED PARKING
AVAILABLE**



**WATER VIEW AND WALKING
DISTANCE**

**FELLS POINT HEALTH CENTRE
LOCATED IN
HISTORIC FELLS POINT
SPACE AVAILABLE**

3 GORGEOUS FLOORS

FIRST FLOOR. 10,500 SF

SECOND FLOOR. 11,000 SF

THIRD FLOOR. 11,000 SF





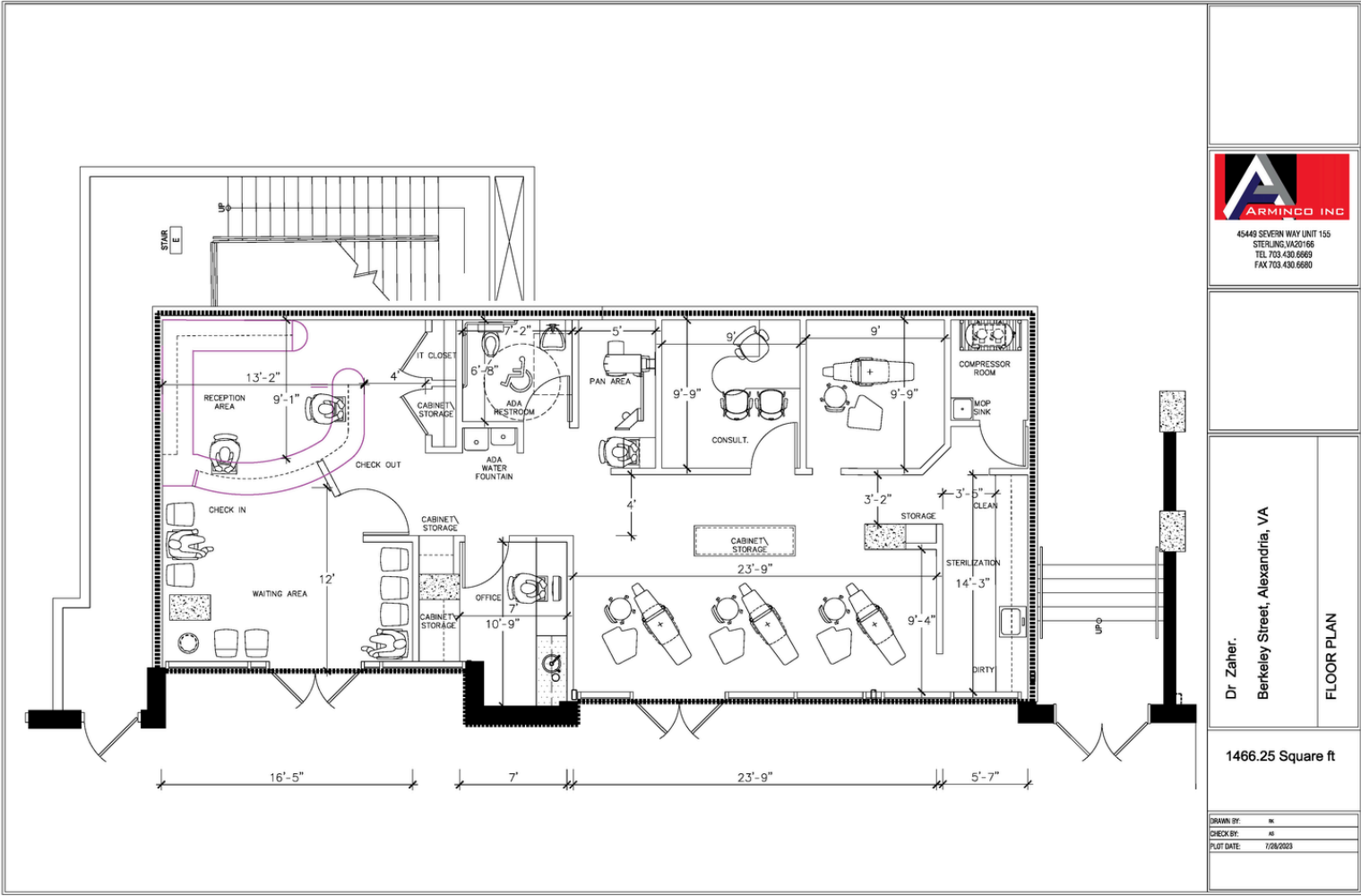
4548 SEVERN WAY UNIT 155
STERLING, VA 20156
TEL 703.430.6669
FAX 703.430.6680

Dr. Zaher.
Berkeley Street, Alexandria, VA

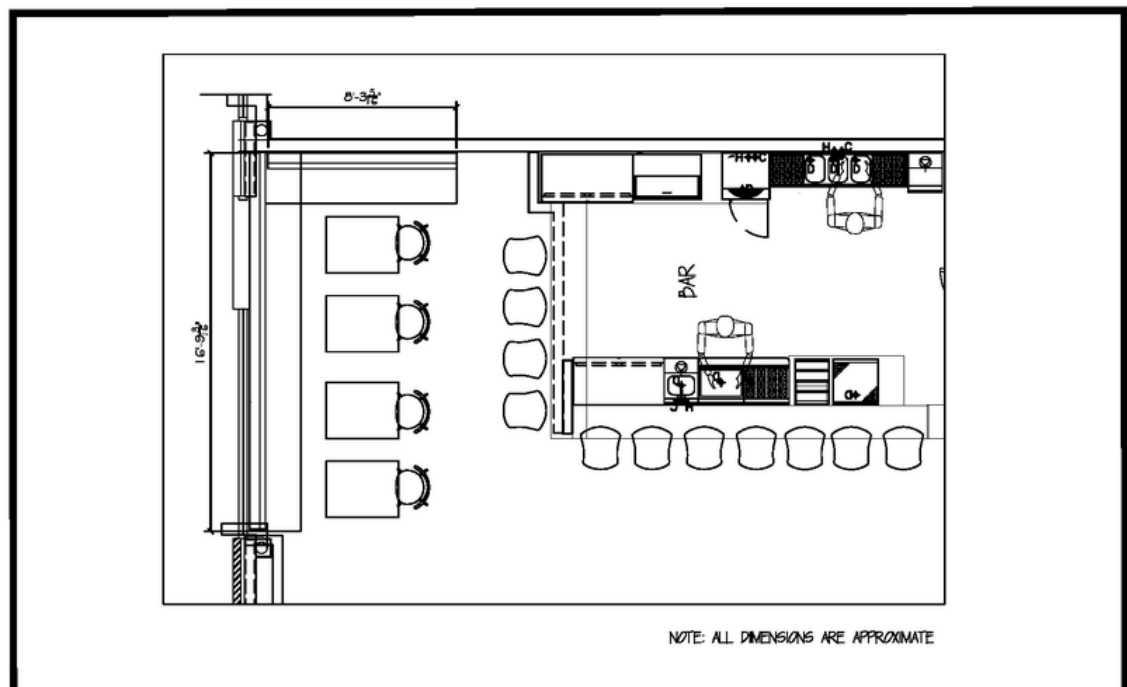
FLOOR PLAN

1466.25 Square ft

DRAWN BY: [initials]
CHECKED BY: [initials]
PLOT DATE: 7/28/2023



IN HOUSE
MEDICAL/DENTAL
ARCHITECTURE
FIRM FOR
CUSTOM SPACE
PLANNING.



NOTE: ALL DIMENSIONS ARE APPROXIMATE



PHONE : 703-430-6669
WEBSITE: ARMINCOINC.COM

THE CONCHE
LEESBURG, VA

