



Property Information:

- Offering Price: \$249,000
- Lot Size: 3.05 Acres
- 132,858 SF
- City Sewer to Site
- City Water to Site
- Electricity to Site
- Natural Gas to Site
- High Traffic
- High Visibility
- Hard Corner Site
- 3 Stop Signs
- Easy Ingress & Egress
- Zoned: AG
- Taxes: \$250
- Tax Year 2017
- Great for Multiple Uses
- Minutes to I-29
- Minutes to Omaha
- Buyer to Satisfy Themselves with Availability of City Services, Utilities and Zoning

INFORMATION CONTAINED HEREIN IS TAKEN FROM SOURCES DEEMED RELIABLE. EVERY EFFORT HAS BEEN MADE TO ASSURE ACCURACY. HOWEVER, THE INFORMATION IS NOT GUARANTEED. ANY ITEM THAT YOU BELIEVE TO BE IMPORTANT REGARDING YOUR DECISION TO PURCHASE AND/OR LEASE THE SUBJECT PROPERTY SHOULD BE INDEPENDENTLY VERIFIED.

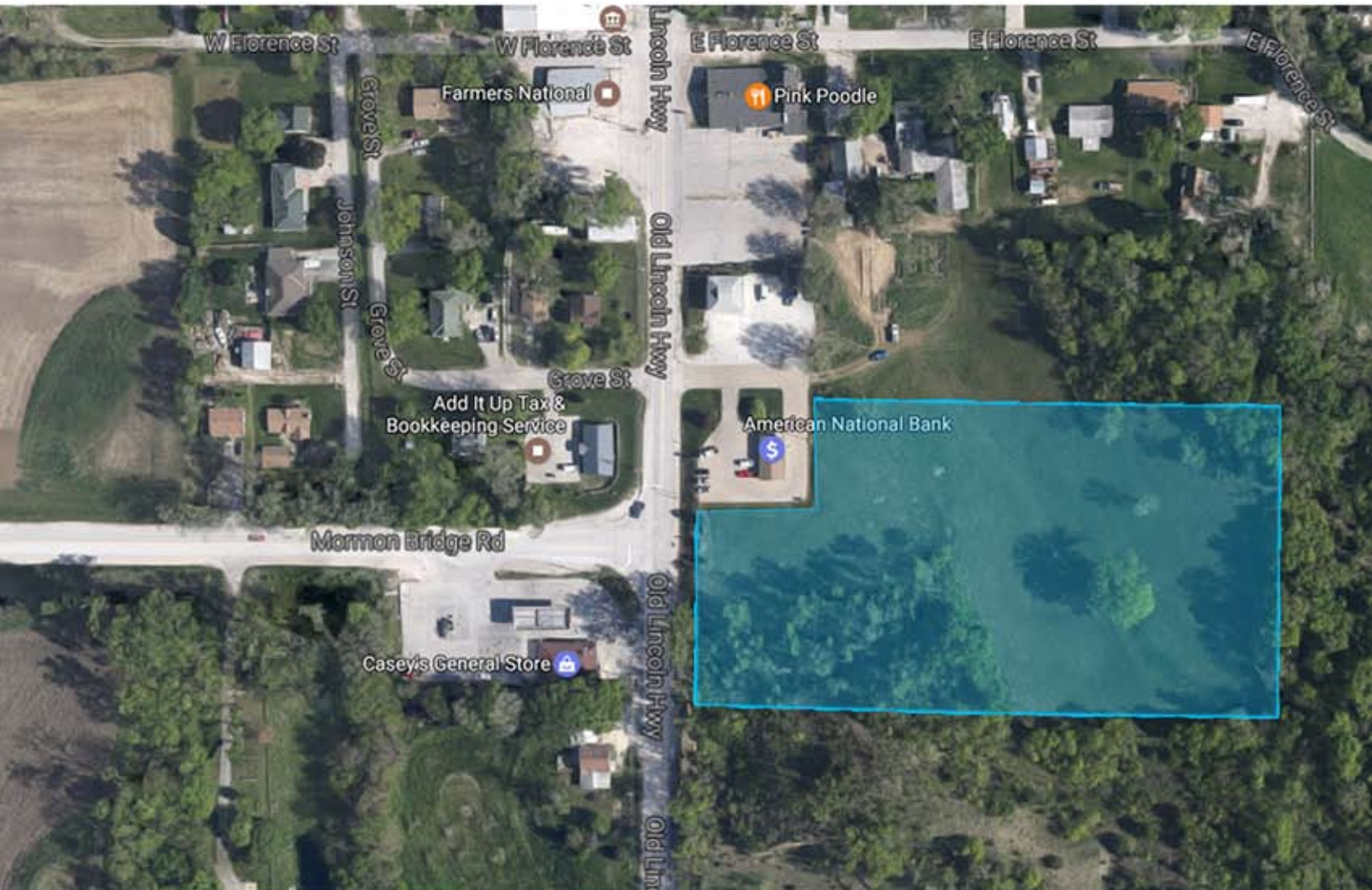


This aerial map displays the 10th Precinct, which includes lots 77, 78, and 79. The map shows a grid of lots with various lot numbers and dimensions. Lot 77 is a large, irregularly shaped lot on the right side of the map. Lot 78 is a large, rectangular lot in the center. Lot 79 is a large, rectangular lot on the left side. The map also shows surrounding streets and other lots in the precinct.

[illegible]

Mike Morse
1-402-677-6356
mike@morse-re.com

17580 Lochland Ridge,
Council Bluffs, IA 51503
1-402-677-6356
morse-re.com



INFORMATION CONTAINED HEREIN IS TAKEN FROM SOURCES DEEMED RELIABLE. EVERY EFFORT HAS BEEN MADE TO ASSURE ACCURACY. HOWEVER, THE INFORMATION IS NOT GUARANTEED. ANY ITEM THAT YOU BELIEVE TO BE IMPORTANT REGARDING YOUR DECISION TO PURCHASE AND/OR LEASE THE SUBJECT PROPERTY SHOULD BE INDEPENDENTLY VERIFIED.