



1217-1227 Norton Rd.,
Hudson, OH 44236

Property Features

- Building Size: 40,000 SF
- Available Space: 5,000 SF - 40,000 SF
- Well-Equipped for Warehouse/Distribution
- Centrally located between Cleveland and Akron
- Convenient Access to SR-8, SR-91 and the Ohio Turnpike
- Suites can be configured to accommodate a variety of space needs

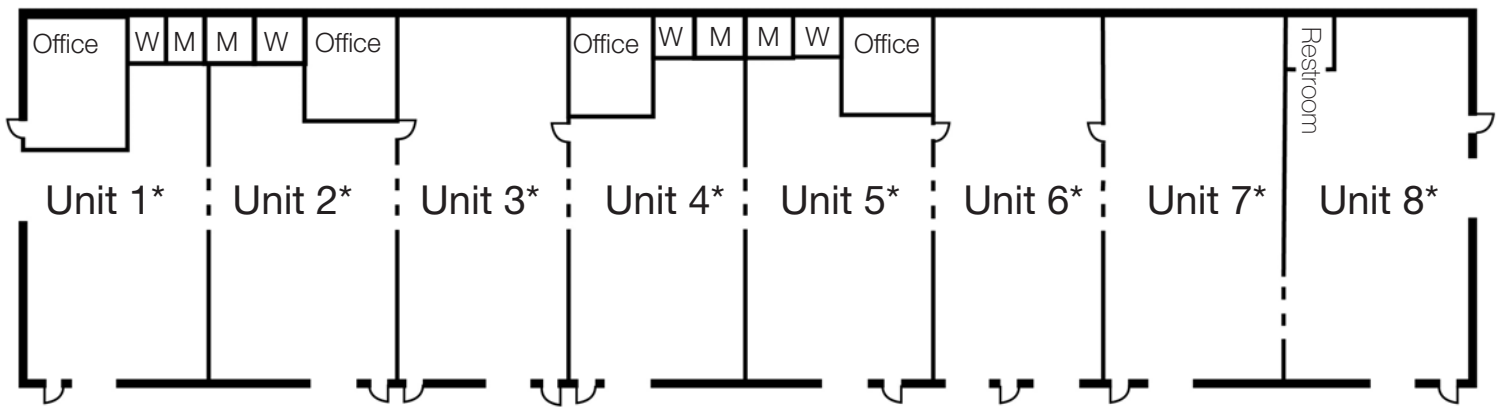


Joe Hauman, CCIM
440 591 3723
joe.hauman@naipvc.com

Noah Broadbent, CCIM
440 708 8578
noah.broadbent@naipvc.com

FOR LEASE

Floor Plan



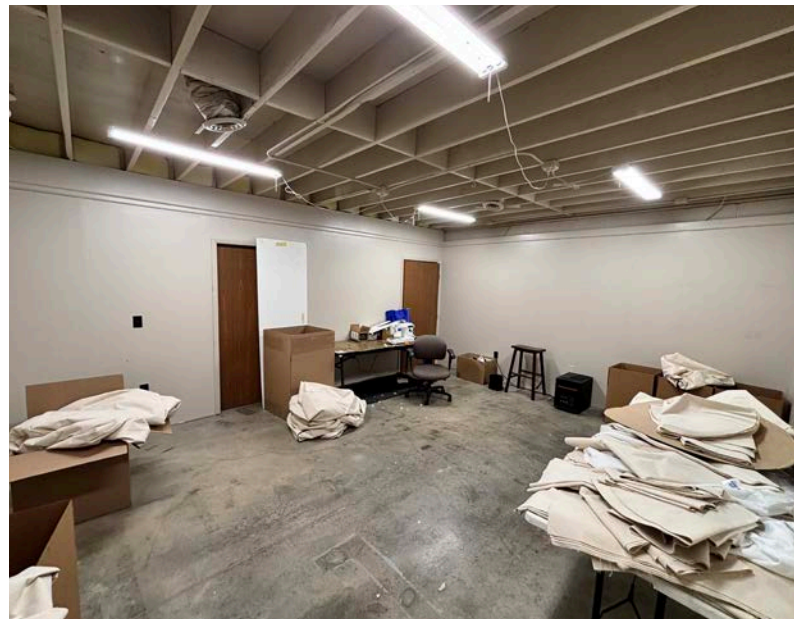
*5,000 SF

Joe Hauman, CCIM
+1 440 591 3723
joe.hauman@naipvc.com

Noah Broadbent, CCIM
440 708 8578
noah.broadbent@naipvc.com

FOR LEASE

Interior Photos

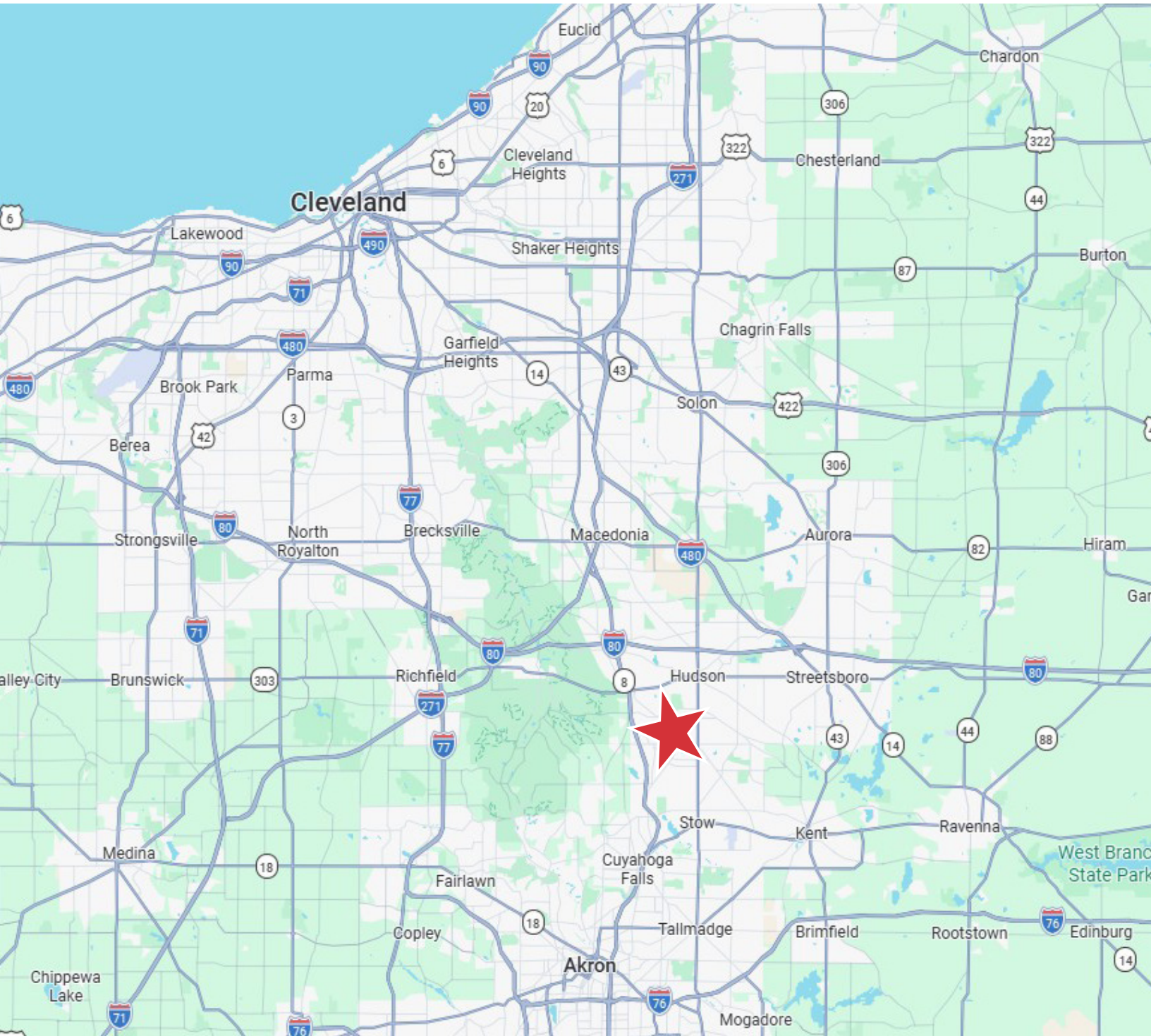


Joe Hauman, CCIM
+1 440 591 3723
joe.hauman@naipvc.com

Noah Broadbent, CCIM
440 708 8578
noah.broadbent@naipvc.com

FOR LEASE

Property Location



Joe Hauman, CCIM
+1 440 591 3723
joe.hauman@naipvc.com

Noah Broadbent, CCIM
440 708 8578
noah.broadbent@naipvc.com

FOR LEASE

Property Details

Property Details

1217-1227 Norton Road, Hudson, OH 44236

TOTAL BUILDING:	40,000 SF
AVAILABLE SPACE:	5,000 SF - 40,000 SF
PROPERTY TYPE:	Industrial/Flex
BUILDING TYPE:	Freestanding
PARKING:	Abundant On-Site Parking
YEAR BUILT:	1979
HEAT:	CoRay Vac Tube
FLOOR DRAINS:	Yes
LIGHTING:	T-8
POWER:	400 AMP, 3 Phase per unit
LAND AREA:	2.09 Acres
CONSTRUCTION:	Brick Block
CLEAR HEIGHT:	15'
DRIVE-IN DOORS:	2
TRUCK DOCKS:	(10) - 8'x10'

Lease Details

LEASE RATE:	\$7.50/SF
LEASE TYPE:	NNN
OPEX:	Est. \$2.78/SF

Joe Hauman, CCIM
+1 440 591 3723
joe.hauman@naipvc.com

Noah Broadbent, CCIM
440 708 8578
noah.broadbent@naipvc.com