

FOR SALE

501 S. SANTA FE STREET

SANTA ANA, CALIFORNIA

+9,580 SQUARE FEET AVAILABLE



NEARLY NEW BUILDING
ALL WORK PERMITTED 2021

- NEW ROOF
- NEW OFFICES

- NEW PARKING SURFACE
- NEW YARD SURFACE

- ADDITIONAL 14'x12' DOOR CUT IN
- NEW AUTO WASH BAY

Voit

REAL ESTATE SERVICES

2020 Main Street | Suite 100 | Irvine, California 92614 | 949.851.5100 | 949.261.9092 Fax | www.VoitCo.com



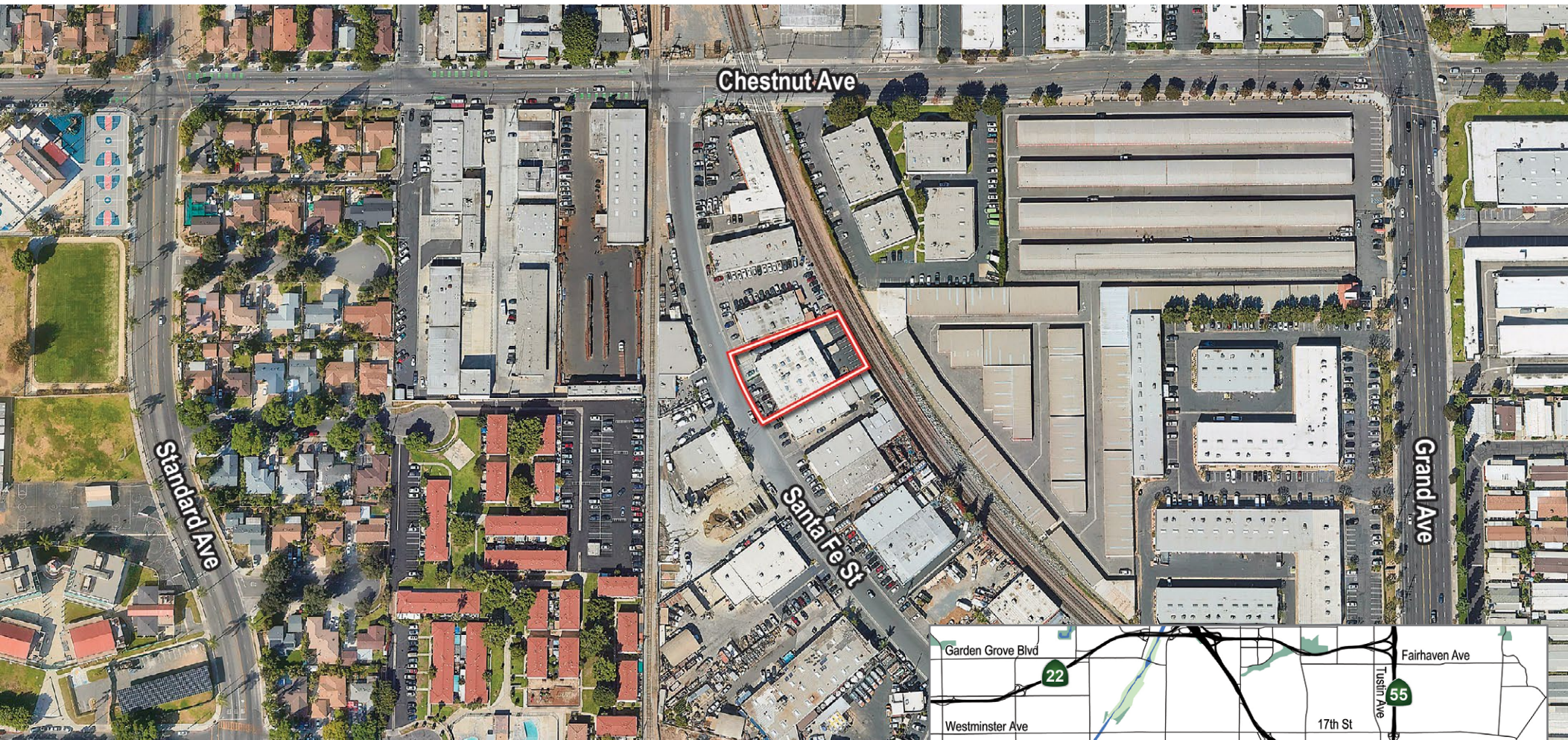
TODD MARTENS

Vice President

Lic #01991785

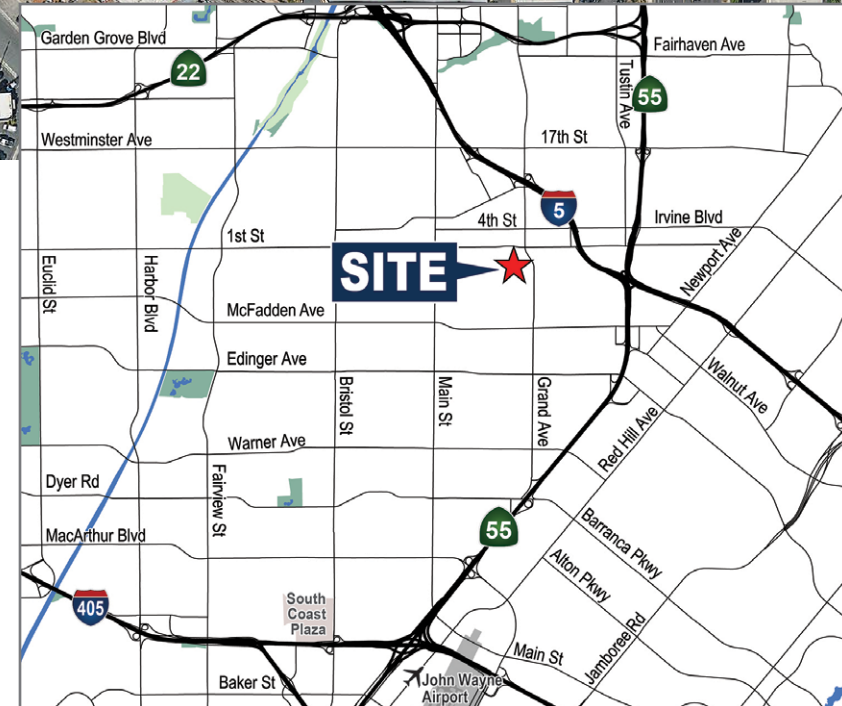
949.263.5331

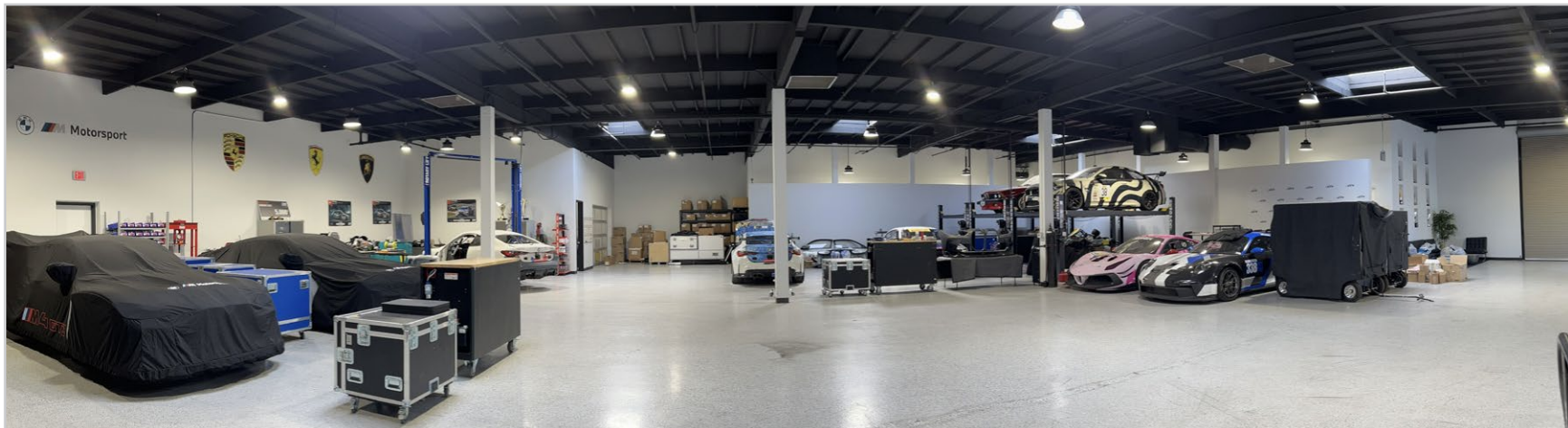
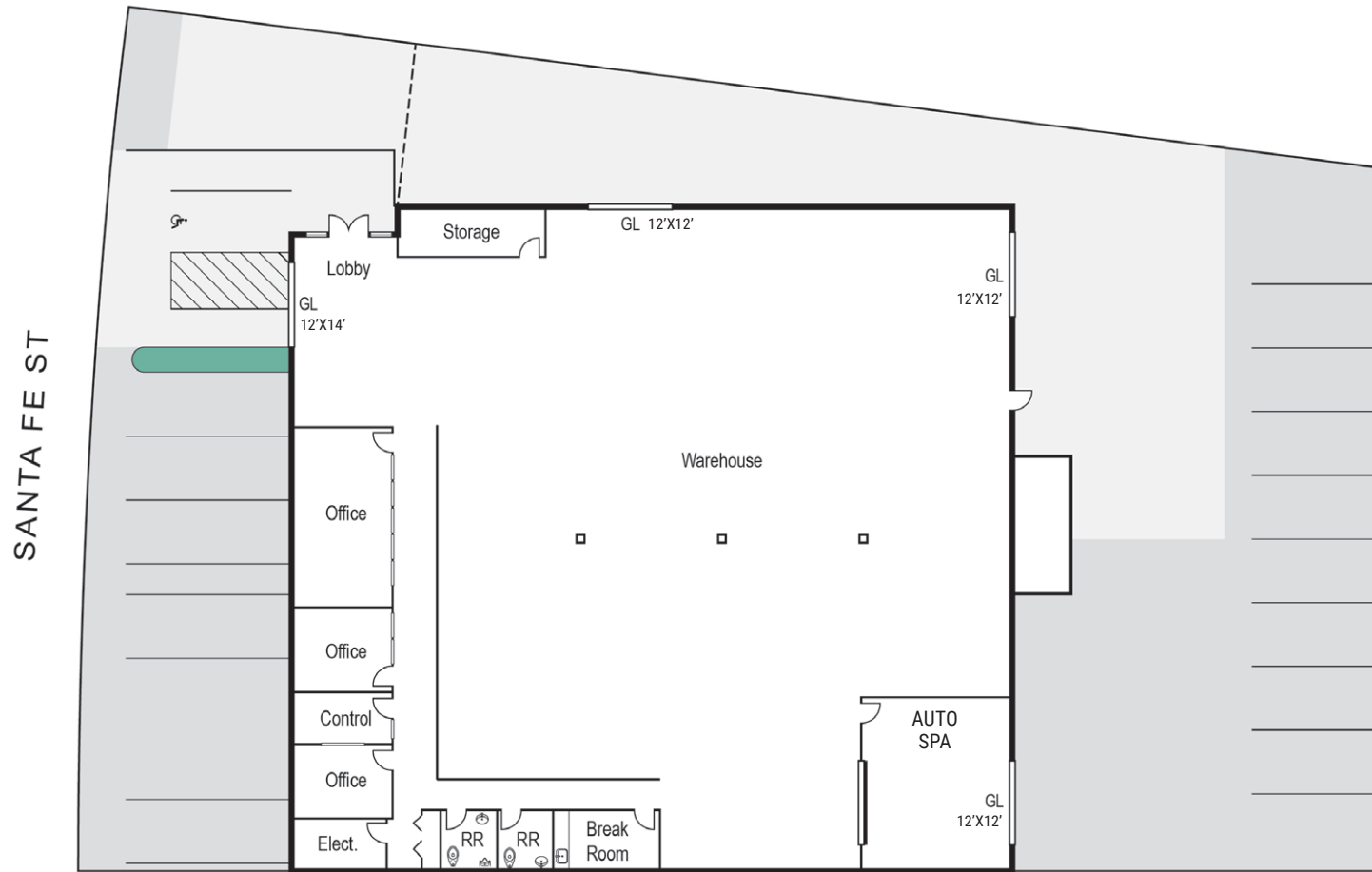
tmartens@voitco.com

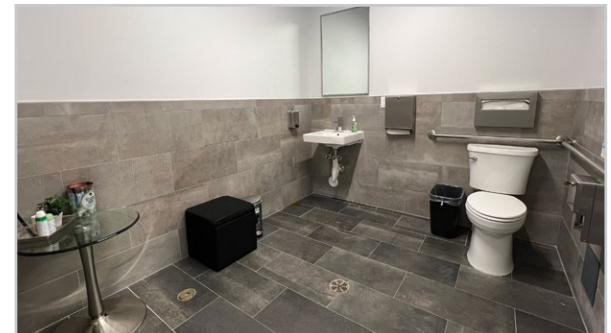


PROPERTY FEATURES:

- ±9,580 SF Available
- ±1,730 SF of Office Space
- 3 Ground Level Loading Doors (12'x12')
- 1 Ground Level Loading Door (12'x14')
- Fully Fire Sprinklered
- Large Fenced Yard
- Warehouse Height - 14'
- Power - 600 AMPS (verify)
- Parking Ratio - 2 per 1,000 SF (approx.)







FOR SALE

501 S. SANTA FE STREET

SANTA ANA, CALIFORNIA

+9,580 SQUARE FEET AVAILABLE



Voit

REAL ESTATE SERVICES

2020 Main Street | Suite 100 | Irvine, California 92614 | 949.851.5100 | 949.261.9092 Fax | www.VoitCo.com



TODD MARTENS

Vice President

Lic #01991785

949.263.5331

smartens@voitco.com