



HALL AND HALL®

800.829.8747

www.HallandHall.com

**85±
ACRES**

**OFFERED IN 2 TRACTS
& COMBINATIONS**

Garden City, Kansas

DEVELOPMENT LAND AUCTION

OCTOBER 26TH • 10 AM

**AUCTION HELD AT CLARION INN GARDEN CITY
1911 E. KANSAS AVENUE, GARDEN CITY, KS**



Prime industrial ground surrounding truck and travel center, RV park, tractor sales and service, and future truck sales and service.

ZONED I-3 Heavy Industrial Ground.

Railroad Frontage runs along the west boundary of Tract 1.

Income Producing Mineral Rights Included.



800.829.8747
www.HallandHall.com



Garden City, Kansas DEVELOPMENT LAND AUCTION

OCTOBER 26TH • 10 AM

AUCTION HELD AT CLARION INN GARDEN CITY
1911 E. KANSAS AVENUE, GARDEN CITY, KS

- Prime industrial ground surrounding truck and travel center, RV park, tractor sales and service, and future truck sales and service.
- ZONED I-3 Heavy Industrial Ground.
- Railroad Frontage runs along the west boundary of Tract 1.
- Prime ground to develop and or speculate for user buyer.

Contact Bob Rodriquez at
620-521-2898 for showings or
additional property information.

85± ACRES

OFFERED IN 2 TRACTS
& COMBINATIONS

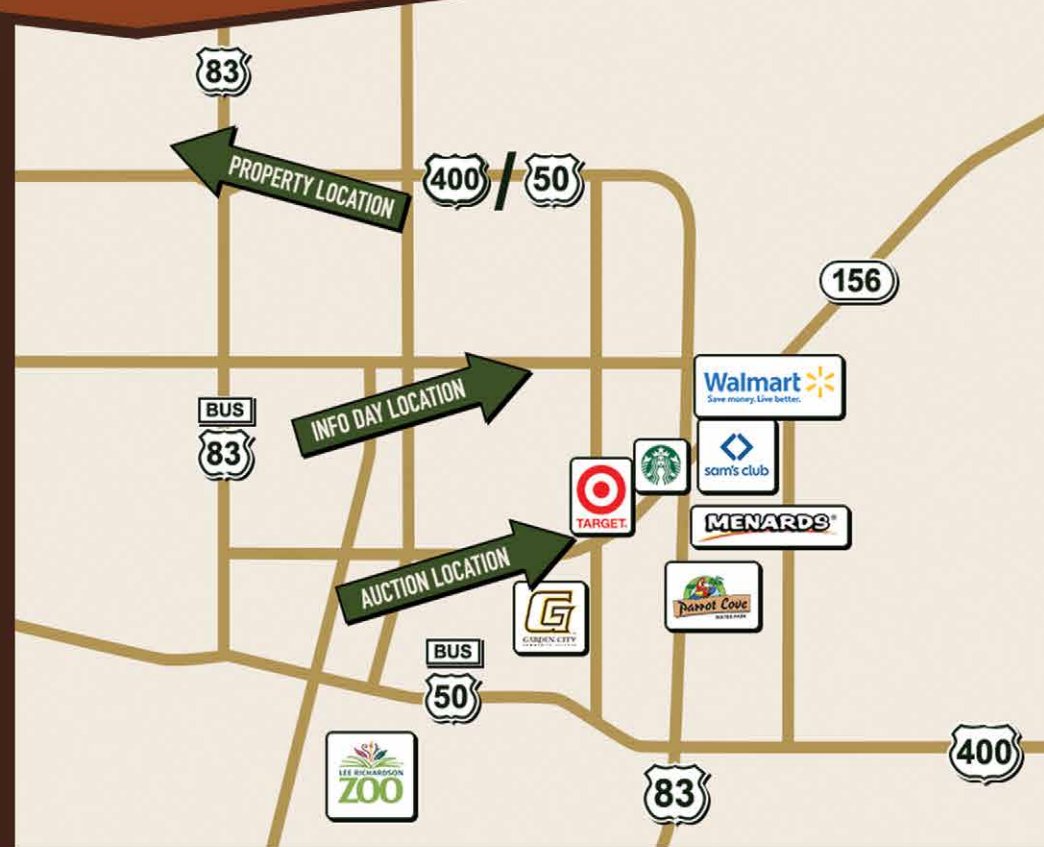
Meet an auction representative to
learn more about the property and
the auction process.

INFORMATION DAYS:

October 5th & October 19th
from 11am-12pm

HELD AT:

Envision Real Estate
1809 E. Mary St.
Garden City, KS 67846



SUMMARY OF TERMS: A 10% earnest money deposit of the total contract price will be due immediately from all successful bidders. A 5% buyer's premium will be added to the high bid to determine the total purchase price. The property is being sold "AS IS, WHERE IS" and without any contingencies, including financing. Closing will be set 30 days from the auction date or as soon thereafter as closing documents are available. Broker participation is available. Contact our office for details.



BOB RODRIQUEZ



800.829.8747
www.HallandHall.com

Hall and Hall Auctions
100 S. Cherry Ave., Unit 5B,
Eaton, CO 80615
Scott Shuman, #KS:00049762
970.716.2120
scott@hallandhall.com

Garden City, Kansas
**DEVELOPMENT
LAND AUCTION**

THURSDAY, OCTOBER 26TH • 10 AM

**AUCTION HELD AT CLARION INN GARDEN CITY
1911 E. KANSAS AVENUE, GARDEN CITY, KS**

