

FOR SALE

1601 NE Success Drive

Jensen Beach, FL 34957

OFFERING SUMMARY

Building Size: 20,290 SF
Property Type: Freestanding
Office/Industrial Building
Land Size: 1.63 Acres
Zoning: LI - Limited Industrial
(Martin County)

SALE PRICE

\$3,250,000

[CLICK HERE FOR PERMITTED USES](#)



SLC Commercial

Realty & Development

slccommercial.com

772.220.4096



JEFFREY D. CHAMBERLIN
PRESIDENT/BROKER, CCIM, SIOR
Mobile 772.528.6056
chamberlin@slccommercial.com



JAIME CHAMBERLIN ELFERT, CCIM, MBA
VICE PRESIDENT, BROKER
Mobile 772.486.3330
jaime@slccommercial.com

Property Details & Highlights

1601 NE SUCCESS DRIVE

FOR SALE

Free-standing office/industrial building located in the heart of Jensen Beach. This ±20,290 SF building sits on 1.63 acres and is zoned Limited Industrial (LI), allowing for a wide range of manufacturing, research, industrial, commercial and institutional uses.

Originally constructed in 1997 with durable concrete block and metal (Varco Pruden) construction, the property has been well maintained and features a brand-new roof installed in 2024.

The building is 100% air-conditioned and powered by heavy 1,600-amp electrical service, making it ideal for manufacturing or high-tech users. The layout includes approximately 7,000± SF of office space, featuring a combination of private offices and open work space along with 13,000± SF of warehouse space offering 16' clear height, and insulated walls/ceilings.



- Fire sprinkler system throughout
- Multiple grade-level roll-up doors (10' x 10') on both sides of the building
- 12+/- HVAC systems servicing the entire facility
- 42+ on-site parking spaces
- Utilities provided by Martin County (water & sewer)
- Flood Zone X

Exterior Photos

1601 NE SUCCESS DRIVE

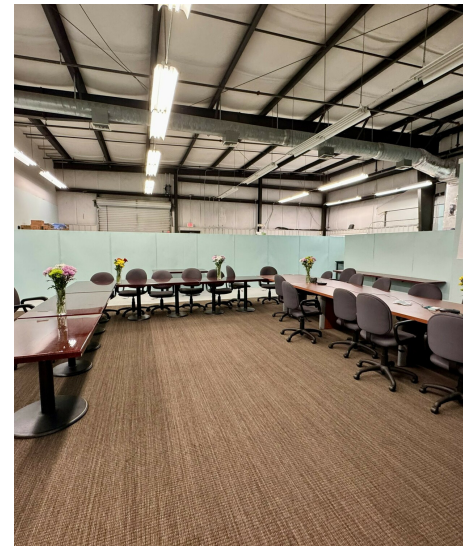
FOR SALE



Interior Photos

1601 NE SUCCESS DRIVE

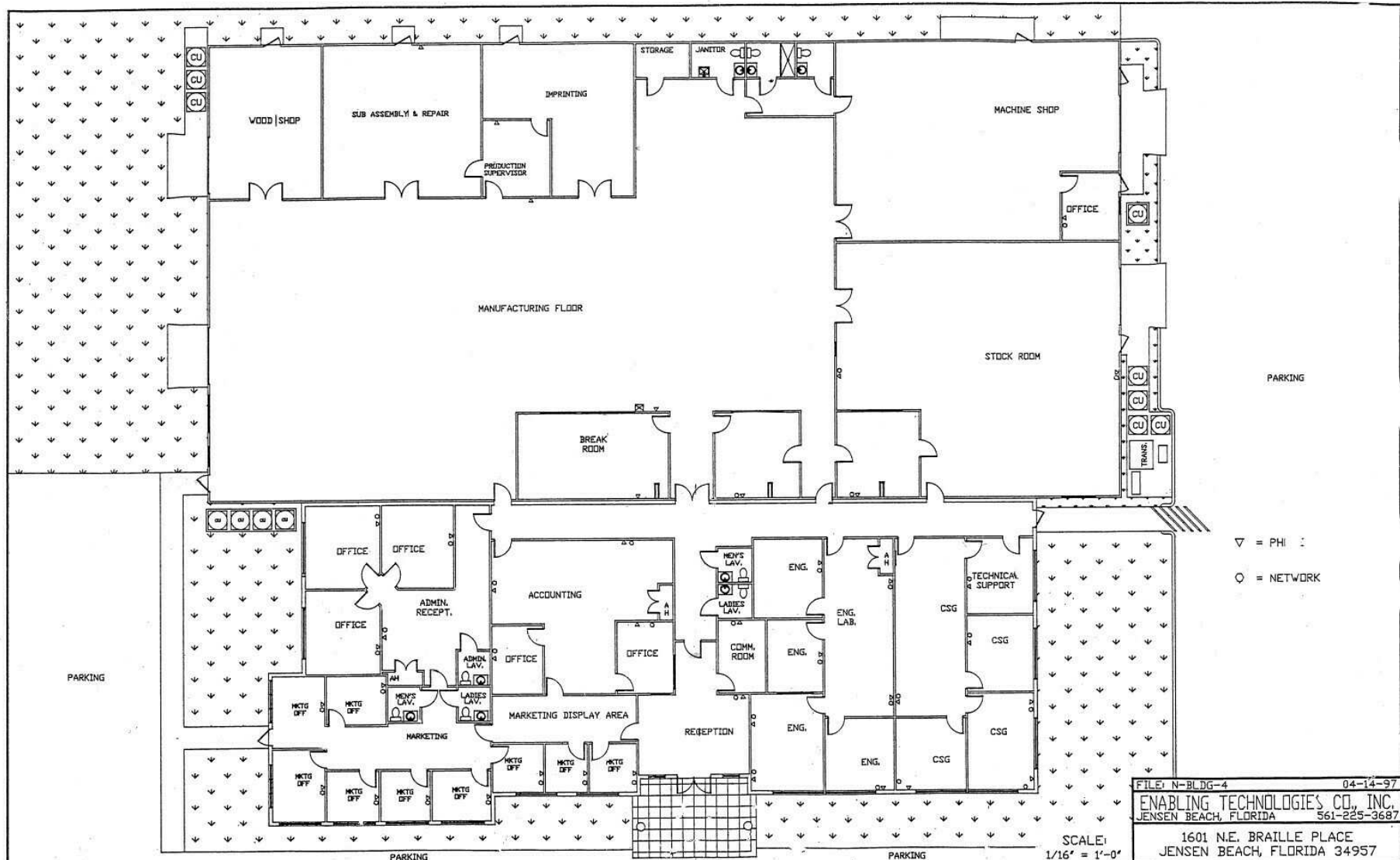
FOR SALE



Floor Plan

1601 NE SUCCESS DRIVE

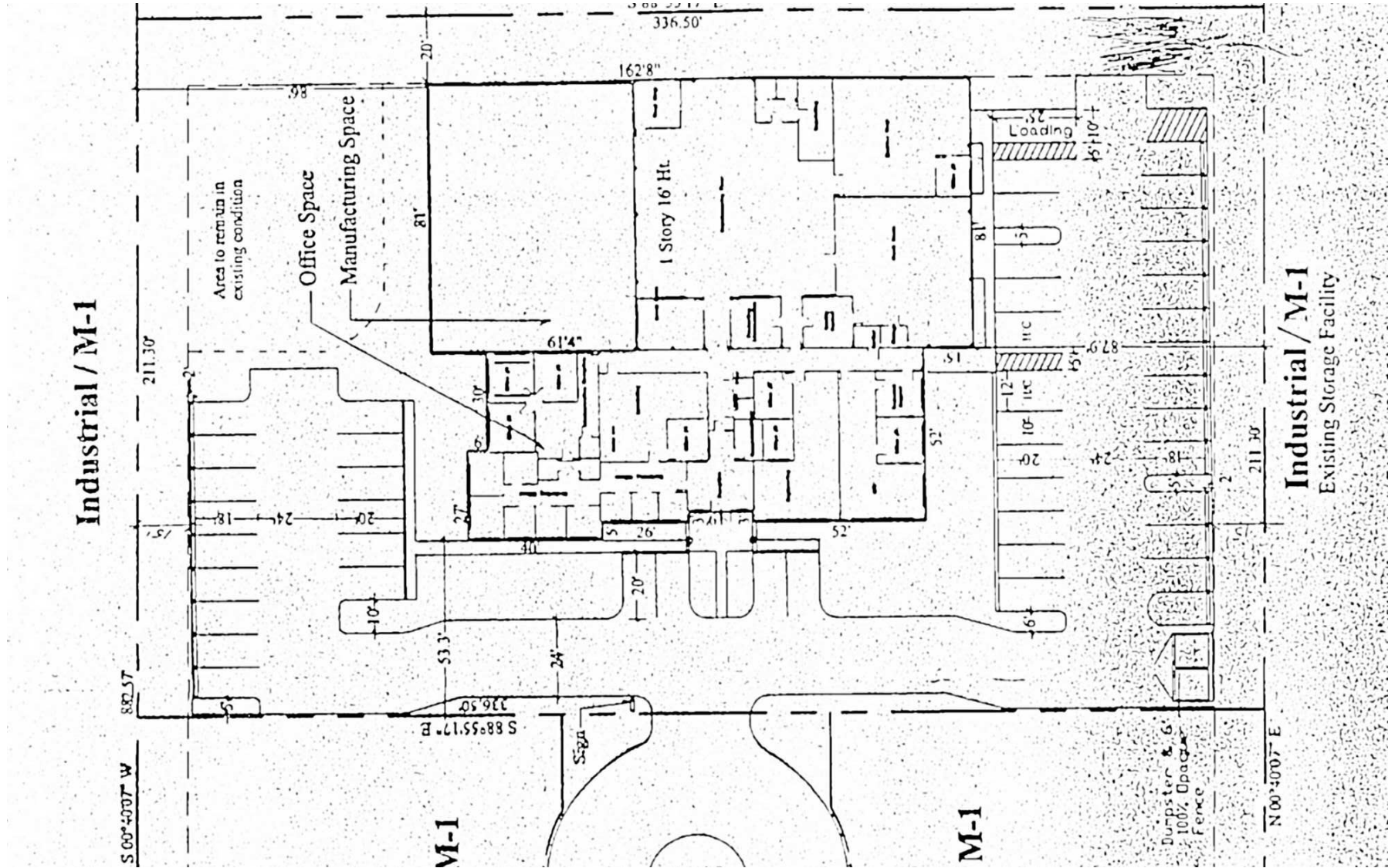
FOR SALE



Site Plan

1601 NE SUCCESS DRIVE

FOR SALE



Aerial Photo

1601 NE SUCCESS DRIVE

FOR SALE



Disclaimer

1601 NE SUCCESS DRIVE

FOR SALE

This presentation package has been prepared by the company representing the property for informational purposes only and does not purport to contain all information necessary to reach a purchase decision.

The information herein has been given by the Owner or other sources believed to be reliable, but it has not necessarily been independently verified by the Company representing the property and neither its accuracy nor its completeness is guaranteed.

This information is subject to errors, omissions, changes, prior sale or withdrawal without notice by the Company representing the property and does not constitute a recommendation, endorsement or advice as to the value for the purchase of any property. Each prospective lessee or purchaser is to rely upon his/her own investigation, evaluation and judgment as to the advisability of leasing or purchasing the property.

Furthermore, any financial information and calculations presented in this analysis are believed to be accurate, but are not guaranteed and are intended for the purposes of projection and analysis only. The user of this financial information contained herein should consult a tax specialist concerning his/her particular circumstances before making any investment.



772.220.4096
slccommercial.com

JEFFREY D. CHAMBERLIN
PRESIDENT/BROKER, CCIM, SIOR
Mobile 772.528.6056
chamberlin@slccommercial.com

JAIME CHAMBERLIN ELFERT, CCIM, MBA
VICE PRESIDENT, BROKER
Mobile 772.486.3330
jaime@slccommercial.com