

3225 | S HARDY DRIVE
TEMPE, ARIZONA
—
TEMPE OFFICE CENTER

FOR LEASE



Nate Goldfarb, Senior Vice President
480.289.4233
ngoldfarb@levrose.com

LEVROSE
COMMERCIAL REAL ESTATE

TCN
WORLDWIDE
REAL ESTATE SERVICES

OFFERING DETAILS

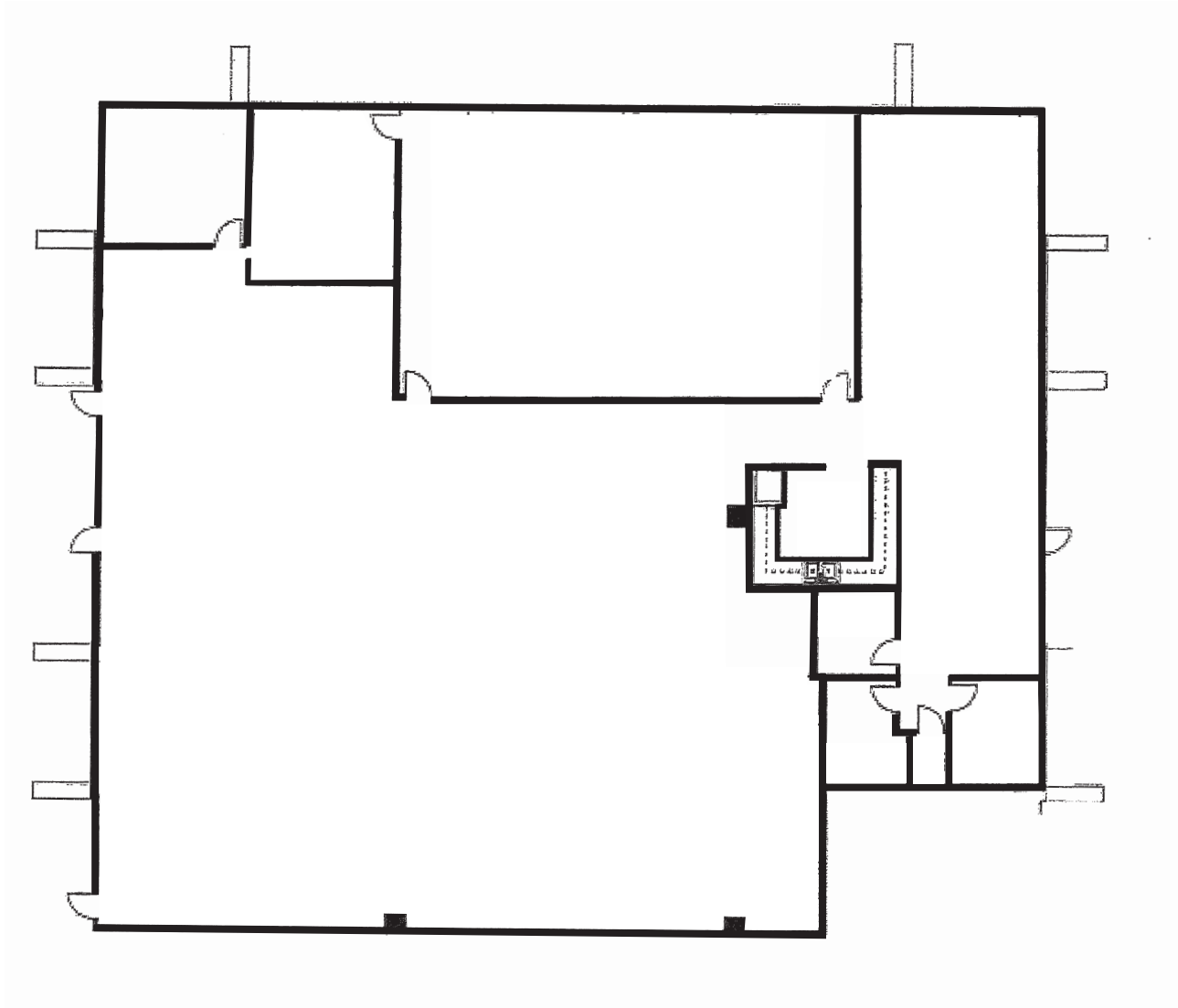
AVAILABILITY	±5,559 SF
RENTAL RATE	\$18/SF NNN
YEAR BUILT	1980 Renovated in 2012
PARKING RATIO	5.7/1,000

PROPERTY HIGHLIGHTS

- Centrally located with close proximity to US60, SR51 & Loop 202 freeways.
- Close proximity to Desert Banner Hospital and Mesa Community College Campus
- Building and Monument Signage available
- Abundant parking
- End Cap Suite Available



EXISTING FLOOR PLAN



DEMOGRAPHICS

3225 S HARDY DRIVE, TEMPE



POPULATION

	1 MILE	3 MILES	5 MILES
2023	14,673	145,431	305,823
2028	14,707	146,974	309,411



HOUSEHOLDS

	1 MILE	3 MILES	5 MILES
2023	6,179	56,439	122,356
2028	6,170	57,032	123,640



AVERAGE INCOME

	1 MILE	3 MILES	5 MILES
2023	\$67,235	\$71,332	\$79,031



EMPLOYMENT

	1 MILE	3 MILES	5 MILES
2023	9,581	106,092	203,849



BUSINESSES

	1 MILE	3 MILES	5 MILES
2023	722	8,545	17,072



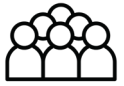
HOME VALUE (MEDIAN)

	1 MILE	3 MILES	5 MILES
2022	\$246,354	\$269,353	\$289,299

Info gathered via SitesUSA



TEMPE CITY OVERVIEW



185K +
TOTAL POPULATION



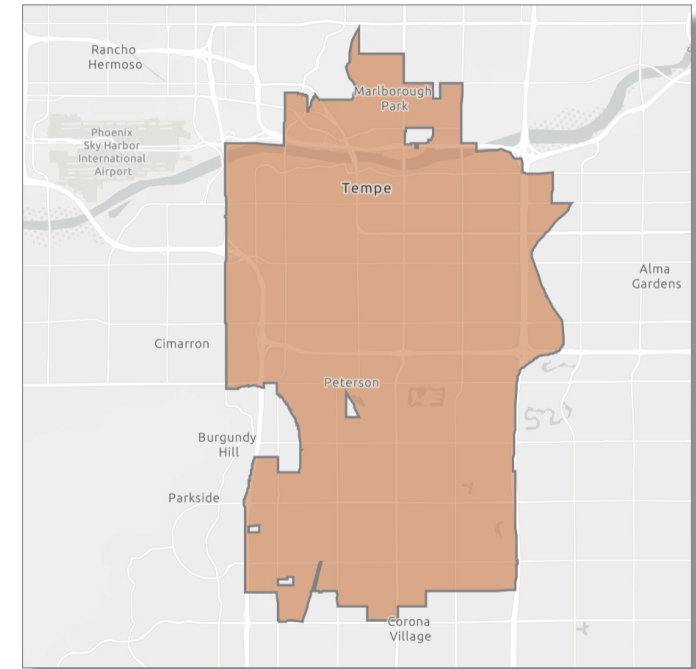
\$91K +
AVG HH INCOME

ACCESSIBLE LOCATION

Tempe is situated in the heart of the Valley and just 10 minutes from Phoenix Sky Harbor International Airport. The city is a top technology center in Arizona and a leading choice for major corporations. Primary city initiatives focus on transportation, accessibility, sustainability, quality of life, inclusivity, and more. There are over 210,000 employees in Tempe and Arizona State University employs the majority of daytime employees.

DIVERSE COMMUNITY

Tempe is a vibrant and active community. Home to Tempe Town Lake, Tempe Center for the Arts, Historic Mill Avenue, PAC 12 Sports, and the oldest comedy club in Arizona, Tempe Improv. With over 40 events and festivals in our downtown and lake district you can find something fun and relaxing to do any time you want. Tempe is the most walkable and bikeable city in the Valley, with hundreds of miles of bike lanes and pedestrian corridors.



LEV ROSE

COMMERCIAL REAL ESTATE

TCN 
WORLDWIDE
REAL ESTATE SERVICES