

PRIME COMMERCIAL LAND OPPORTUNITY

5 Acres of Land with Buildings

4900 Highway US 92 E

Lakeland, Florida 33801

\$1,300,000

Lot Size
4.97 Acres

Frontage
225 feet

Buildings
7

Square Ft.
216,450

Zoning
CE (1000)

Traffic (VPD)
34,500



Unlock the potential of this exceptional **4.97-acre** commercial parcel strategically positioned along **Highway US 92 E** in the rapidly growing Lakeland market. With **225 feet of prime highway frontage**, this property offers unparalleled visibility and accessibility for a variety of commercial uses.

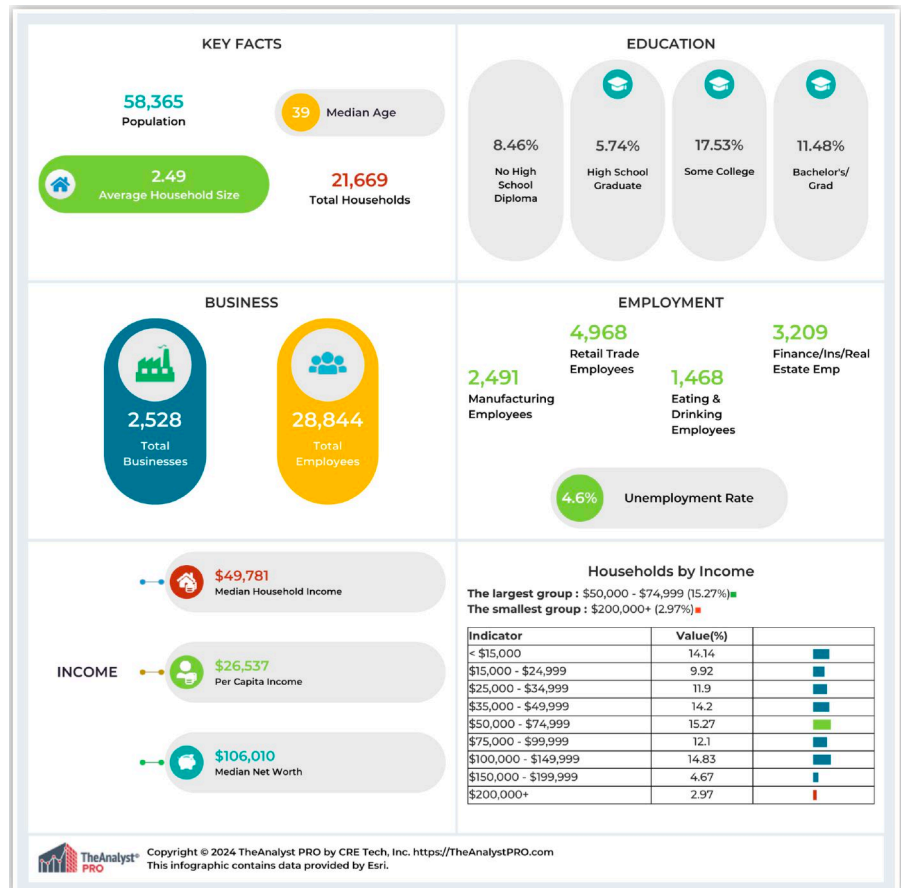
Key Features:

- **Size:** 4.97 acres
- **Frontage:** 225 feet on Highway US 92 E
- **Location:** North side of US 92 E, just minutes from I-4 and business hubs
- **Zoning:** CE- Land Use 1000
- **Accessibility:** High-traffic corridor with excellent exposure
- **Proximity:** close to Polk Parkway, and Lakeland's thriving business community

Ideal For:

- Retail development
- Restaurants or hospitality use
- Gas station or convenience store
- Industrial or distribution facility
- Office or mixed-use development

This property offers a rare opportunity to secure a highly visible and accessible site in one of Central Florida's fastest-growing commercial corridors. Position your business for success in this high-demand location!



Brent Morse
BrentLMorse@Gmail.com
(407) 463-6952

Tony Acosta
tacosta.tony89@gmail.com
(863) 224-5956

21 COMMERCIAL.

MYERS REALTY
304 E Park St Auburndale FL
(863) 875-5656