

3092 EVERGREEN PARKWAY

EVERGREEN, COLORADO 80439

**PROPERTY FEATURES**

- Suites are in excellent condition, like new
- Lovely first floor corner office suite, light and airy; includes private patio with mountain view, kitchenette with beautiful wood cabinetry
- Second floor suites have private restrooms and private balcony
- Plenty of parking, easy access from Highway 74
- Modified Gross rate includes all utilities, services and expenses except suite janitorial

PROPERTY SPECIFICATIONS

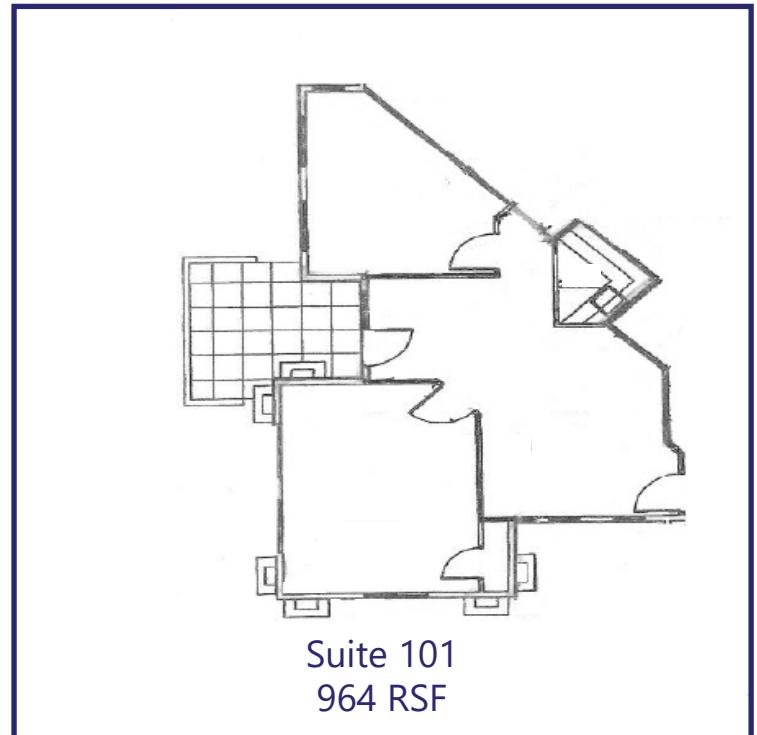
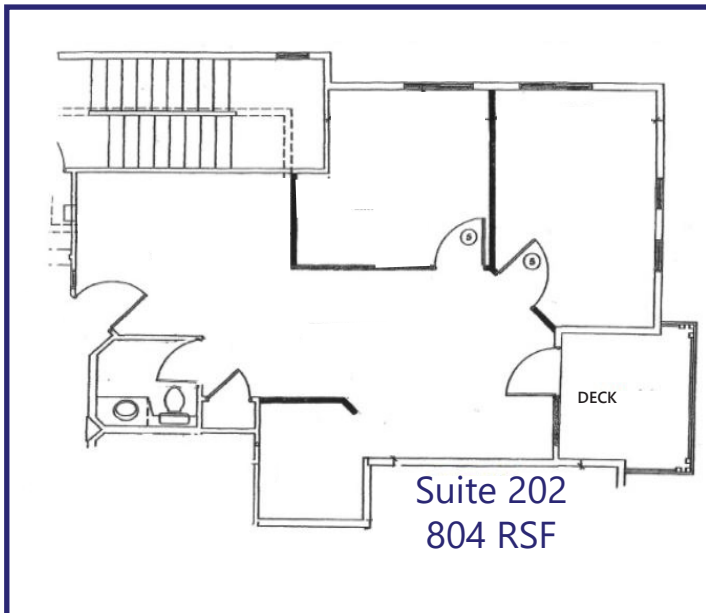
Available:	Suite 202	804 RSF
	<i>Lease Rate:</i>	<i>\$17.00/RSF MG</i>
	Suite 101	964 RSF
	<i>Lease Rate:</i>	<i>\$18.00/RSF MG</i>
Lease Term:		2 - 5 years
Building Size:		5,749 SF
Stories:		Two
Year Built		2007

FOR MORE INFORMATION CONTACT:**RENÉE SPICER**

rspicer@gcgcre.com | 720.476.5226

JAMIE MACBETH

jmacbeth@gcgcre.com | 720.476.5229



No warranty or representation is made as to the accuracy of the foregoing information. Terms of sale or lease and availability are subject to change or withdrawal without notice.

FOR MORE INFORMATION CONTACT:

RENÉE SPICER

rspicer@gcgcre.com | 720.476.5226

JAMIE MACBETH

jmacbeth@gcgcre.com | 720.476.5229