



# **GOLD AND COMPANY, LLC**



**2107—2123 Maisel St. Baltimore, MD 21230**

## **Gold And Company, LLC**

**5601 Newbury St.  
Baltimore, MD 21209**

**Mitch Gold / Jim Chivers  
Office: 410.578.1300  
Fax: 410.578.0200  
[www.goldcommercial.net](http://www.goldcommercial.net)**

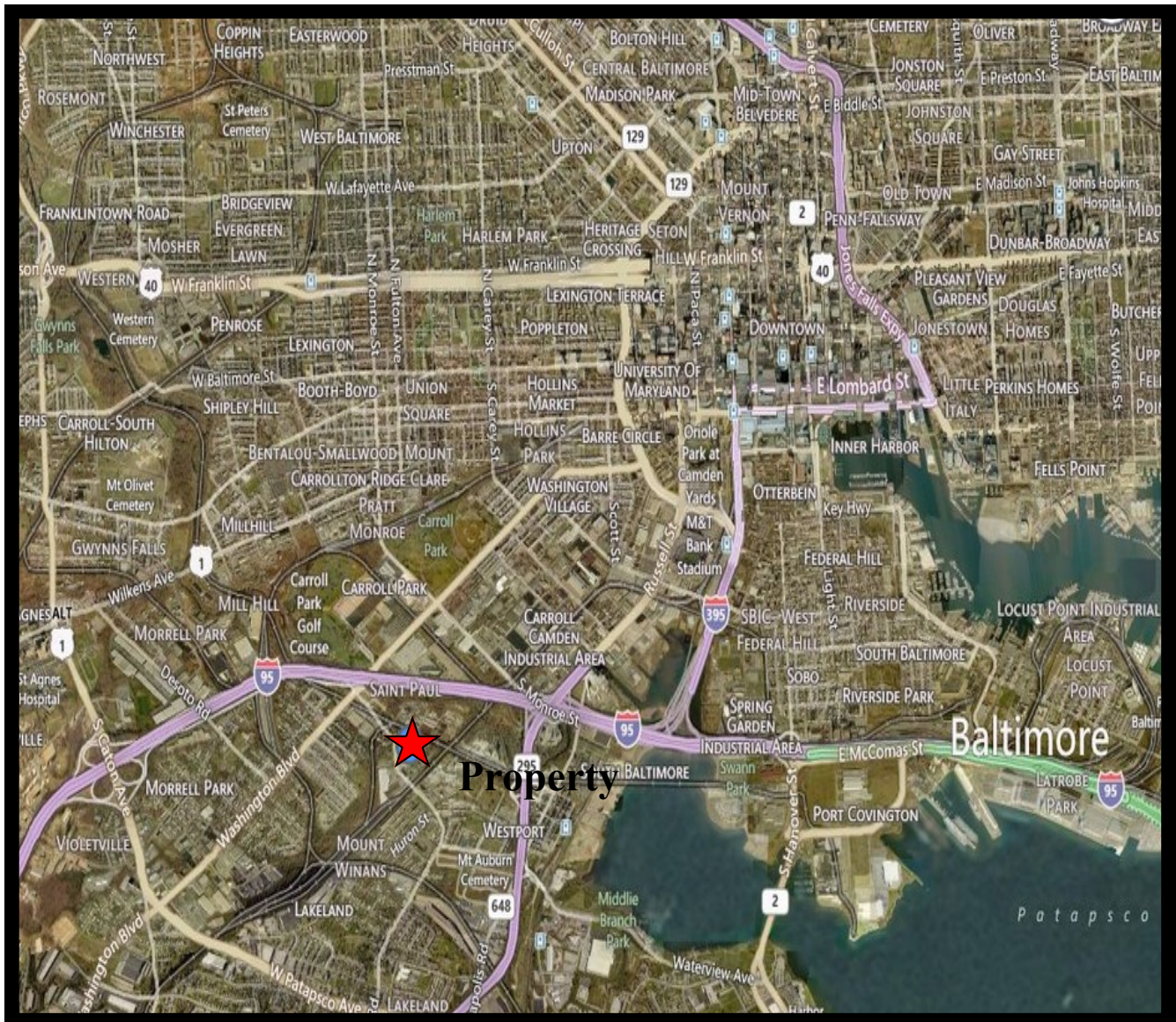
- **Industrial Property Available For Sale**
- **Southwest Baltimore City Location**
- **M-3 Zoning**
- **+/- 7,400 sf**
- **Heavy Power—1200 Amps**
- **12' Ceiling Height**
- **1 Loading Dock**
- **Fenced Lot**
- **Close to I-95**
- **Call For More Information**



# Gold And Company

*Commercial Real Estate in the Baltimore Metropolitan Area*

**2107—2123 Maisel St. Baltimore, MD 21230**



**Mitch Gold / Jim Chivers**  
**Gold And Company, LLC**  
**5601 Newbury St.**  
**Baltimore, MD 21209**

**410.578.1300 (Office)**  
**410.578.0200 (Fax)**  
**[www.goldcommercial.net](http://www.goldcommercial.net)**

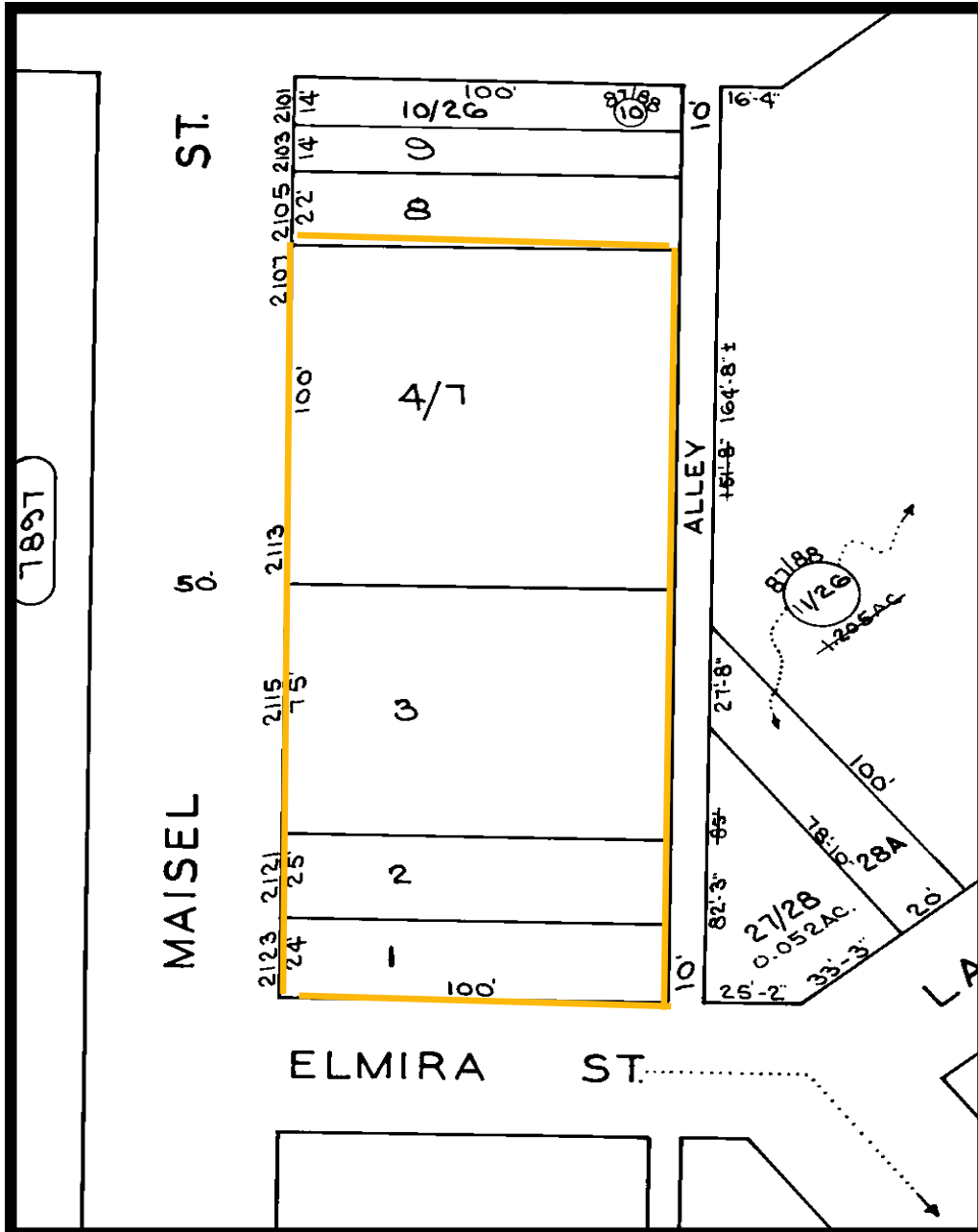
This property offering is subject to change without notice. All information is deemed reliable but not guaranteed.



# Gold And Company

Commercial Real Estate in the Baltimore Metropolitan Area

2107-2123 Maisel St. Baltimore, MD 21230



Mitch Gold / Jim Chivers  
Gold And Company, LLC  
5601 Newbury St.  
Baltimore, MD 21209

410.578.1300 (Office)  
410.578.0200 (Fax)  
www.goldcommercial.net