

FREEWAY (I-94) EXPOSURE!



PILOT

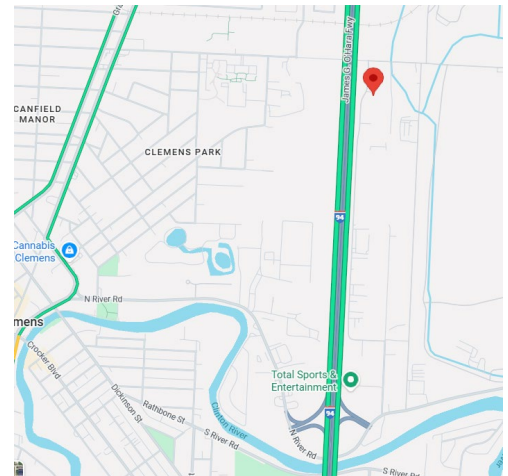
PROPERTY GROUP

42628 EXECUTIVE DRIVE, HARRISON TOWNSHIP, MI 48045

PROPERTY OVERVIEW:

Strong 12,800 sq. ft. corporate image, free-standing industrial building now available. The building is under new ownership/management and offers a meticulously maintained two-story office setup, with new shop expansion (2023), shop floor drains, heavy power and high bay, clear span construction, with drive-through capability for trucks. Easy on/off I-94 freeway accessibility and exposure/signage. This is a must see, very clean building. Appointment only, contact brokers for showing. **Do not approach existing tenant/employees.**

Property Type: Free-Standing Industrial
Cross Streets: East of I-94 / Bet. N. River Rd Exit and Joy Blvd
Total Square Footage: 12,800
Office Square Footage: 1,820 (2-story)
Maximum Square Footage: 11,800
Parcel Size: 0.76 Acre
Year Built: 1977 & 2023
Zoning: IND
Ceiling Height: 18' 6"
Grade Level Doors: (2) 12' W x 14' H
Power: Heavy
Shop Heat Type: Radiant Tube
Property Taxes: 2025: \$23,753.12 (\$1.86/SF)
Lease Rate: \$9.95/SF
Lease Type: NNN



VIRTUAL TOUR OF BUILDING:

<https://my.matterport.com/show/?m=QUyRMzneXwo>

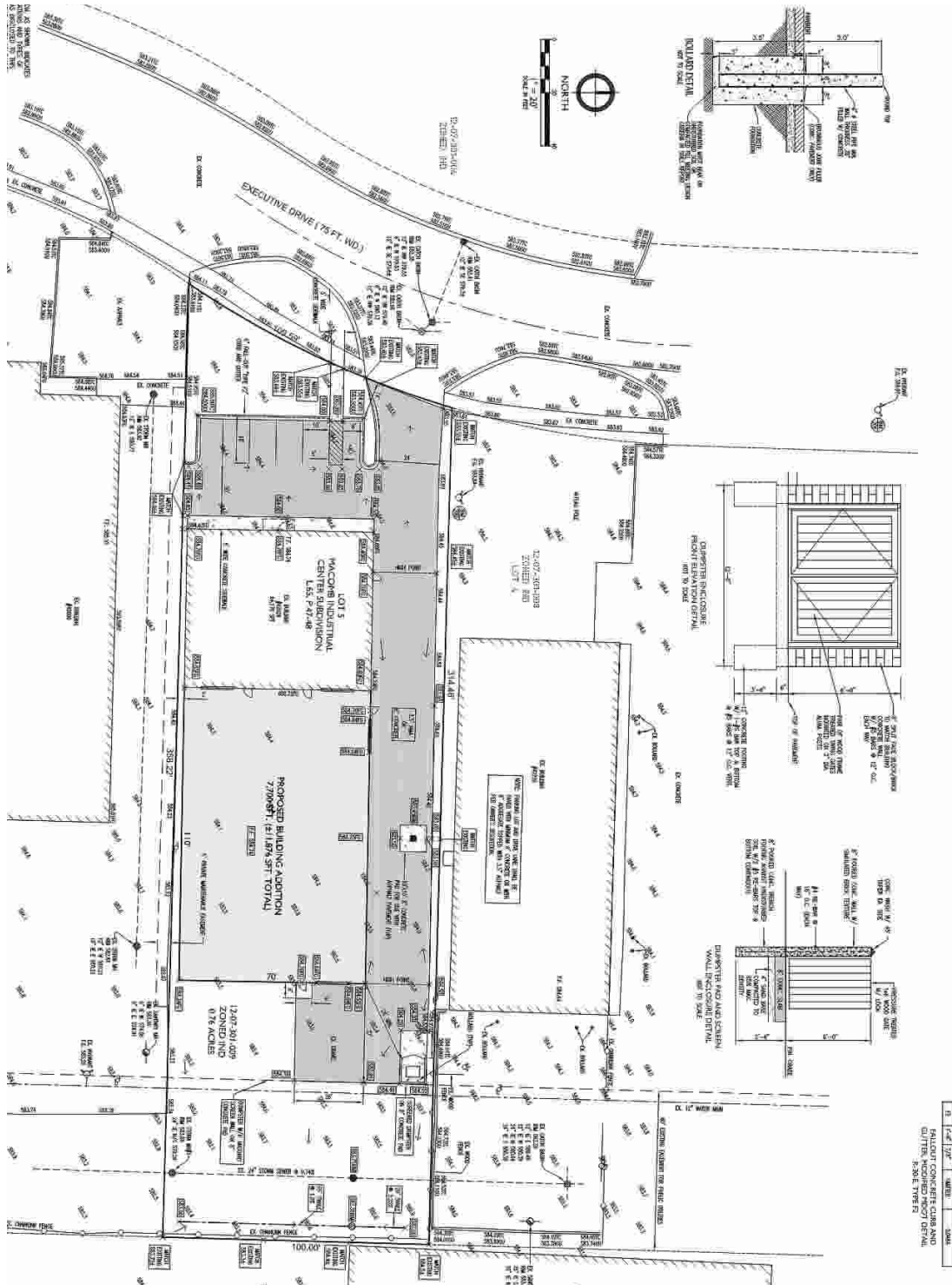
AGENT CONTACT INFO

EVAN JUROVCIK O: 586.254.0900 x108 • C: 586.360.0911 • ejurovcik@gmail.com
JIMMY DIEHL O: 586.254.0900 x109 • C: 586.337.5241 • j.diehl@pilotpg.com

Matching the right people to the right place.

Offices in Sterling Heights and Port Huron to serve you
586.254.0900 • www.pilotpg.com

SITE PLAN



Matching the right people to the right place.

Offices in Sterling Heights and Port Huron to serve you
586.254.0900 • www.pilotpg.com

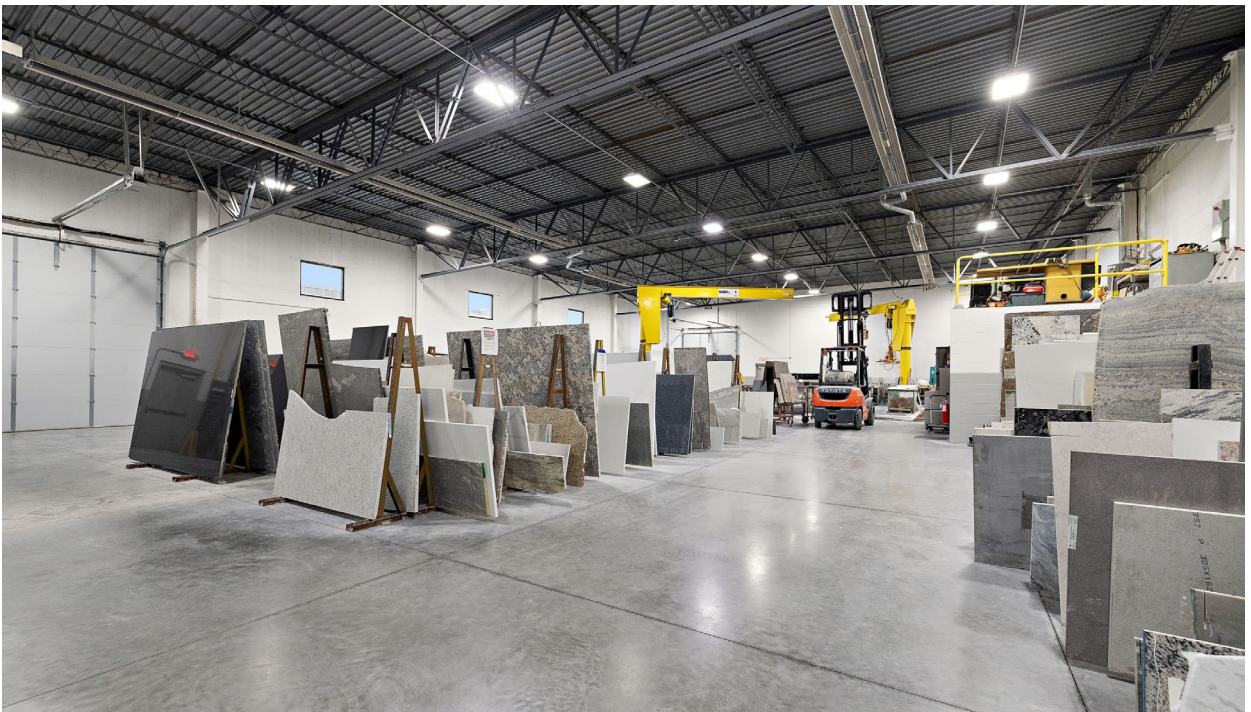
ADDITIONAL PHOTOS



Matching the right people to the right place.

Offices in Sterling Heights and Port Huron to serve you
586.254.0900 • www.pilotpg.com

ADDITIONAL PHOTOS



Matching the right people to the right place.

Offices in Sterling Heights and Port Huron to serve you
586.254.0900 • www.pilotpg.com