

OFFICE SPACE FOR LEASE

SULLIVAN SQUARE

3809 Sullivan Street - Suite 3, Madison, AL 35758



PROPERTY OVERVIEW

Sullivan Square is conveniently located two blocks north of Interstate 565 and Madison Boulevard on Sullivan Street. The property offers plenty of parking, easy access, and high visibility from heavily traveled Sullivan Street.

PROPERTY HIGHLIGHTS

- Plenty of on-site parking, including dedicated parking for tenants.
- Includes reception area.
- Suite has multiple private offices.
- Convenient location close to main thoroughfares, historic downtown Madison, and Town Madison.

LEASE RATE:	Negotiable
BUILDING SIZE:	10,988 SF
AVAILABLE SF:	750 SF
LEASE TYPE:	NNN



SCAN TO
SEE LISTING

JIM KAPLAN

JKAPLAN@TRIADPROPERTIES.COM

256-508-6666

OFFICE SPACE FOR LEASE

SULLIVAN SQUARE

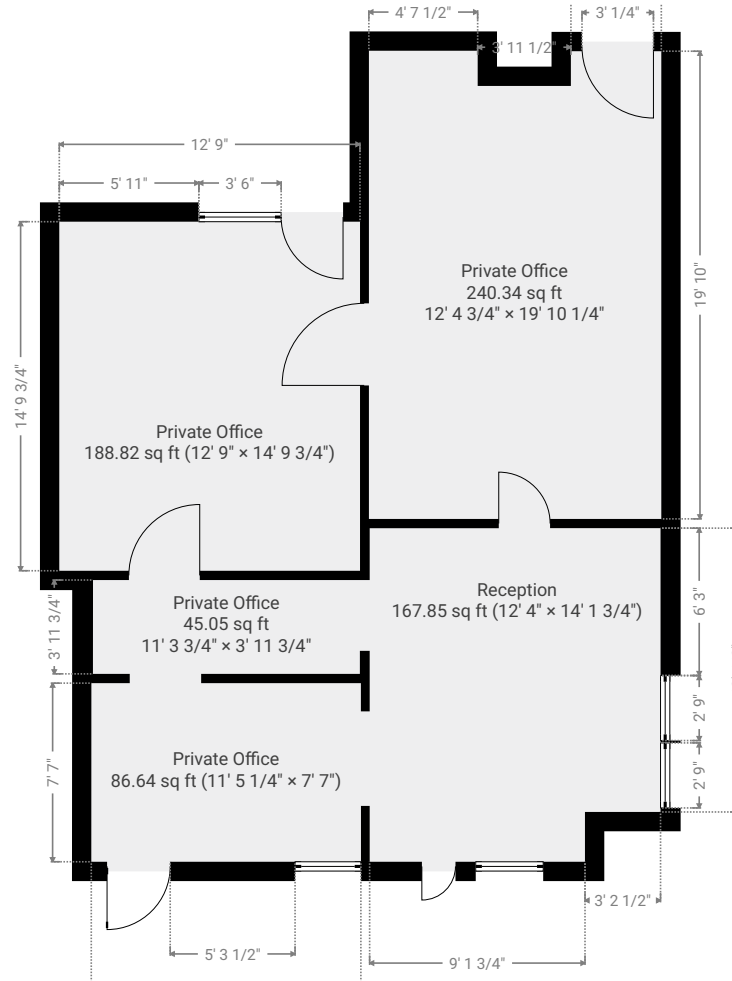
3809 Sullivan Street - Suite 3, Madison, AL 35758



FLOORPLAN

SUITE 3 - 750 SF

THIS FLOOR PLAN IS PROVIDED WITHOUT WARRANTY OF ANY KIND AND DISCLAIMS ANY WARRANTY INCLUDING, WITHOUT LIMITATION, SATISFACTORY QUALITY OR ACCURACY OF DIMENSIONS.



JIM KAPLAN

JKAPLAN@TRIADPROPERTIES.COM

256-508-6666

OFFICE SPACE FOR LEASE SULLIVAN SQUARE

3809 Sullivan Street - Suite 3, Madison, AL 35758



JIM KAPLAN
JKAPLAN@TRIADPROPERTIES.COM
256-508-6666