

ABSOLUTE NNN LEASE | 5% INCREASES IN THE PRIMARY TERM | 12.5 YEARS REMAINING



Actual Property

**318 S WESTERN AVE**  
**LIBERAL, KS 67901**

PRICE  
**\$1,750,000**

CAP RATE  
**6.95%**

# TABLE OF CONTENTS

**CJ BRILL**

Vice President | LIC CA #02073511  
National Net Lease / Sale Leaseback Group  
415.489.1742  
cj.brill@transwestern.com

**COLEBY HENZLIK**

Link Property Advisors, LLC  
KS# 00235512

03

## EXECUTIVE SUMMARY

Investment Highlights  
Lease Abstract

05

## AREA & DEMOGRAPHIC OVERVIEW

Market Area Map  
Property Photos

07

## TENANT OVERVIEW

Area Overview  
Demographic Snapshot



Rare 5% increases every 5 years in the primary term



Dollar General is an investment grade rated company (S&P: BBB) and the leading discount retailer in the US



Absolute NNN lease with zero landlord responsibilities



Over 12.5 years remaining on the primary term



Corporate guarantee, with 20,000+ locations and a proven, recession-resistant business model.



Located along South Western Avenue (8,155 VPD)



Ideal demographics for Dollar General (20,002 residents within a 5 mile radius)



Strong average household income of over \$71k within a 5-mile radius



One block off the exit ramp for Hwy 54 (12,100 VPD)

ASKING PRICE	CAP RATE	NOI
\$1,750,000	6.95%	\$121,548

### LEASE ABSTRACT

<b>Guarantor</b>	Dollar General Corporation
<b>Lease Type</b>	Absolute NNN
<b>Landlord Responsibilities</b>	None
<b>ROFR</b>	No

### RENT SCHEDULE

#### BASE RENT SCHEDULE

<b>12/01/2023 - 11/30/2028</b>	<b>\$121,548</b>
12/01/2028 - 11/30/2033	\$127,620
12/01/2033 - 11/30/2038	\$134,004
OPTION 1	\$140,712
OPTION 2	\$147,744
OPTION 3	\$155,136
OPTION 4	\$162,888

### OVERVIEW

<b>Tenant</b>	DG Retail, LLC
<b>Address</b>	318 S Western Ave, Liberal, KS 67901
<b>Year Built</b>	2023
<b>Gross Leaseable Area (SF)</b>	10,640 SF
<b>Lot Size (AC)</b>	1.50 AC
<b>Store #</b>	25553
<b>Ownership</b>	Fee Simple

### LEASE TERM

<b>Lease Commencement</b>	11/03/2023
<b>Lease Expiration</b>	11/30/2038
<b>Renewal Options</b>	Four 5-year
<b>Rent Increases</b>	5% every five years

MARKET AREA MAP



PROPERTY PHOTOS



# DOLLAR GENERAL

## Tenant Overview

20,000+

TOTAL LOCATIONS

163,000

EMPLOYEES

Public (NYSE: DG)

COMPANY TYPE

BBB

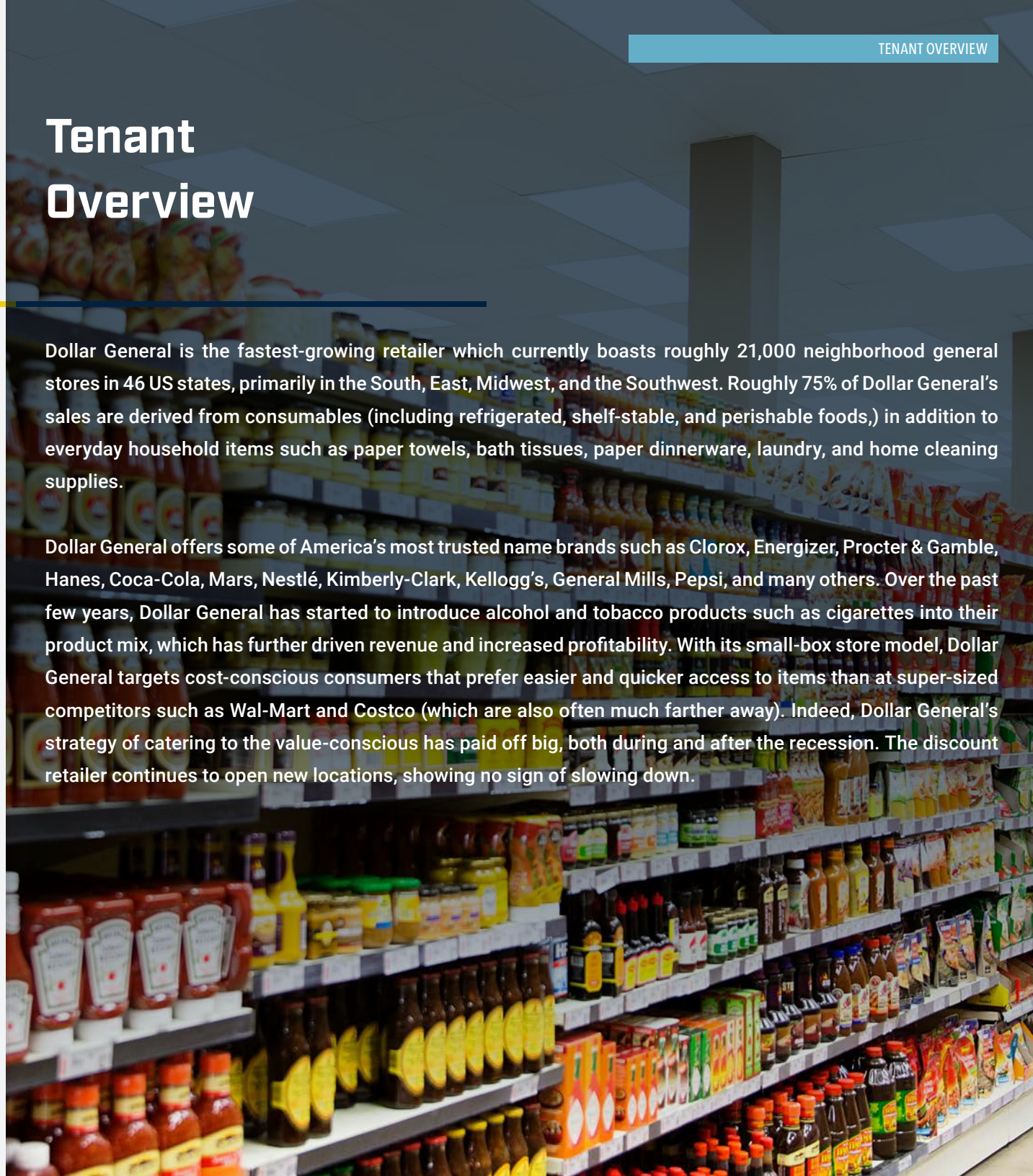
INVESTMENT RATING

Goodlettsville, TN

HEADQUARTERS

Dollar General is the fastest-growing retailer which currently boasts roughly 21,000 neighborhood general stores in 46 US states, primarily in the South, East, Midwest, and the Southwest. Roughly 75% of Dollar General's sales are derived from consumables (including refrigerated, shelf-stable, and perishable foods,) in addition to everyday household items such as paper towels, bath tissues, paper dinnerware, laundry, and home cleaning supplies.

Dollar General offers some of America's most trusted name brands such as Clorox, Energizer, Procter & Gamble, Hanes, Coca-Cola, Mars, Nestlé, Kimberly-Clark, Kellogg's, General Mills, Pepsi, and many others. Over the past few years, Dollar General has started to introduce alcohol and tobacco products such as cigarettes into their product mix, which has further driven revenue and increased profitability. With its small-box store model, Dollar General targets cost-conscious consumers that prefer easier and quicker access to items than at super-sized competitors such as Wal-Mart and Costco (which are also often much farther away). Indeed, Dollar General's strategy of catering to the value-conscious has paid off big, both during and after the recession. The discount retailer continues to open new locations, showing no sign of slowing down.



## Liberal, Kansas Overview

Liberal, Kansas serves as the primary commercial, employment, and retail hub for Seward County and the surrounding southwestern Kansas trade area. The city benefits from a stable, diversified economy anchored by agriculture, food processing, manufacturing, healthcare, and education, providing consistent employment and consumer demand. As a regional center, Liberal attracts shoppers from surrounding rural communities who rely on the city for everyday goods and essential services, supporting strong performance for necessity-based retailers.

Retail in Liberal is characterized by limited new supply and low development pressure, which enhances the long-term durability of well-located single-tenant assets. Discount and value-oriented retailers are particularly well positioned due to the market's reliance on brick-and-mortar retail for daily needs and convenience. Combined with steady population trends and a strong regional draw, Liberal offers investors a defensive, income-oriented market well suited for long-term net-lease investment.

### POPULATION

	2 miles	5 miles	10 miles
2025 Population	16,456	20,002	22,443
Median Age	31.3	31.7	32.1

### HOUSEHOLDS

	2 Miles	5 Miles	10 Miles
2025 Households	5,465	6,661	7,517
Annual Growth 2020-2025	0.3%	0.3%	0.5%
Avg Household Size	2.9	2.9	2.9

### ESTIMATED HOUSEHOLD INCOME

	2 Miles	5 Miles	10 Miles
Avg Household Income	\$78,580	\$78,928	\$78,601
Median Home Value	\$60,239	\$60,976	\$61,049



 Transwestern

**CJ BRILL**

Vice President | LIC CA #02073511  
National Net Lease / Sale Leaseback Group  
415.489.1742  
cj.brill@transwestern.com

**COLEBY HENZLIK**

Link Property Advisors, LLC  
KS# 00235512