

FLEX/OFFICE FOR LEASE AIRPARK SQUARE

Airport Drive and Business Pky , Westminster, MD 21157

Available: 3,125 - 4,622 SF



LISTING DATA

AVAILABLE SF: 3,125 - 4,622 SF

ECONOMIC DATA

LEASE RATE: Call for more info

PROPERTY INFORMATION

COUNTY: Carroll

MARKET: Baltimore

BUILDING DATA

TOTAL BUILDING SF: 111,493 SF

YEAR BUILT: 1994

ZONING: I-R

PROPERTY OVERVIEW

± 14,000 SF of fully conditioned FLEX space

PROPERTY HIGHLIGHTS

- 2,200 - 14,844 SF Available
- Drive-in and dock high available
- Approx. 13' 6" ceiling height
- Great visibility along MD 97
- I-R zoning allows for a variety of uses
- Close proximity to Carroll County Airport
- Shell and re-let space available
- Traffic Count - 16,960 Per Day

Bill Harrison
Senior Vice President
443.741.4045
bharrison@lee-associates.com

All information furnished regarding property for sale, rental or financing is from sources deemed reliable, but no warranty or representation is made to the accuracy thereof and same is submitted to errors, omissions, change of price, rental or other conditions prior to sale, lease or financing or withdrawal without notice. No liability of any kind is to be imposed on the broker herein.

FLEX/OFFICE FOR LEASE AIRPARK SQUARE

Airport Drive and Business Pky , Westminster, MD 21157
Available: 3,125 - 4,622 SF



125 Airport Drive | Suite 30



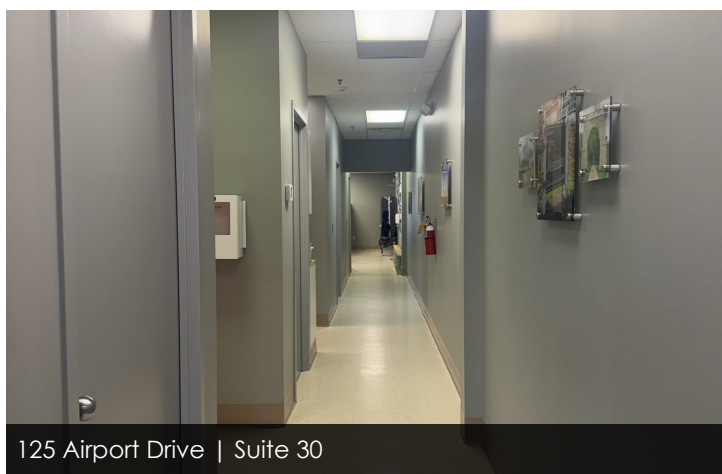
125 Airport Drive | Suite 30



125 Airport Drive | Suite 30



125 Airport Drive | Suite 30



125 Airport Drive | Suite 30



125 Airport Drive | Suite 14

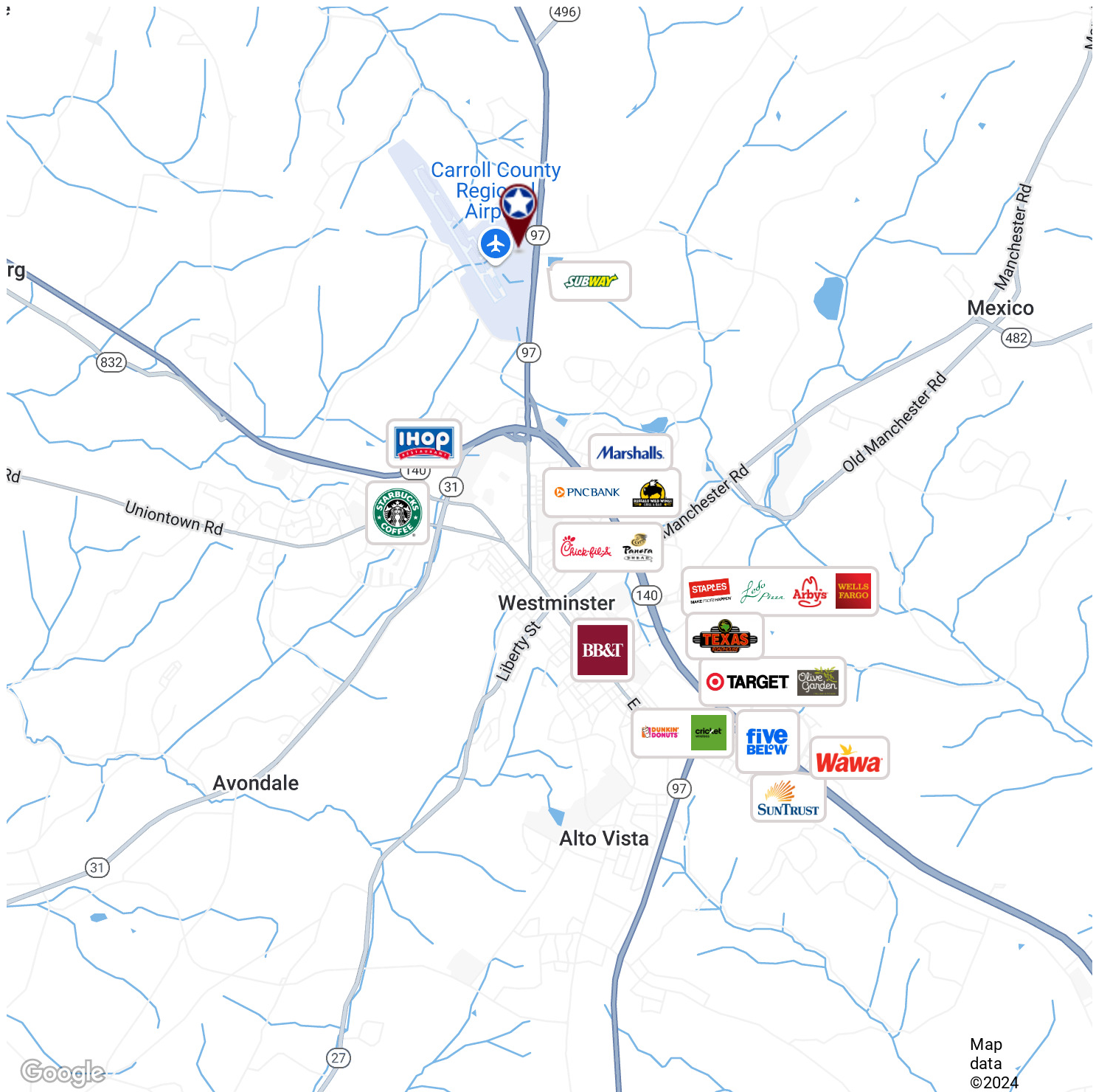
Bill Harrison
Senior Vice President
443.741.4045
bharrison@lee-associates.com

All information furnished regarding property for sale, rental or financing is from sources deemed reliable, but no warranty or representation is made to the accuracy thereof and same is submitted to errors, omissions, change of price, rental or other conditions prior to sale, lease or financing or withdrawal without notice. No liability of any kind is to be imposed on the broker herein.

FLEX/OFFICE FOR LEASE AIRPARK SQUARE

Airport Drive and Business Pky , Westminster, MD 21157

Available: 3,125 - 4,622 SF



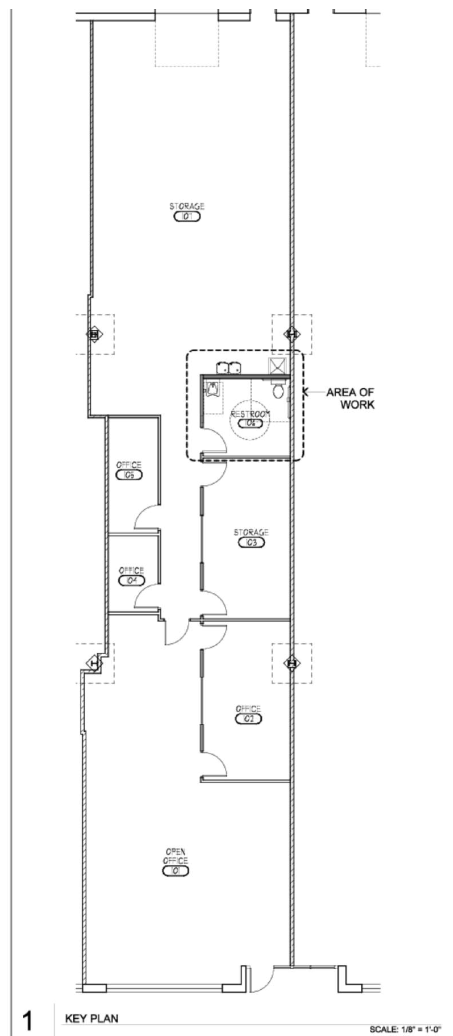
Bill Harrison
Senior Vice President
443.741.4045
bharrison@lee-associates.com

All information furnished regarding property for sale, rental or financing is from sources deemed reliable, but no warranty or representation is made to the accuracy thereof and same is submitted to errors, omissions, change of price, rental or other conditions prior to sale, lease or financing or withdrawal without notice. No liability of any kind is to be imposed on the broker herein.

FLEX/OFFICE FOR LEASE AIRPARK SQUARE

Airport Drive and Business Pky , Westminster, MD 21157

Available: 3,125 - 4,622 SF



Fully Conditioned Space

AVAILABLE SPACES

SUITE	SIZE (SF)	LEASE TYPE	LEASE RATE
125 Airport Drive Suite 14	3,125 SF	Call For Info	Call For Info

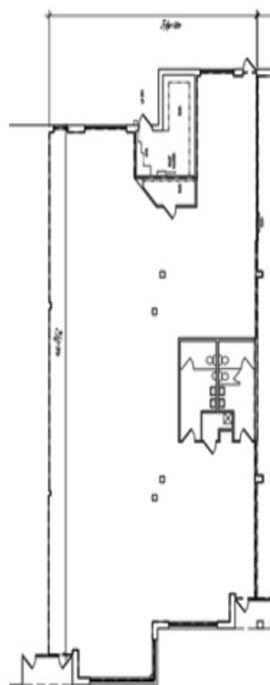
Bill Harrison
Senior Vice President
443.741.4045
bharrison@lee-associates.com

All information furnished regarding property for sale, rental or financing is from sources deemed reliable, but no warranty or representation is made to the accuracy thereof and same is submitted to errors, omissions, change of price, rental or other conditions prior to sale, lease or financing or withdrawal without notice. No liability of any kind is to be imposed on the broker herein.

FLEX/OFFICE FOR LEASE AIRPARK SQUARE

Airport Drive and Business Pky , Westminster, MD 21157

Available: 3,125 - 4,622 SF



AVAILABLE SPACES

SUITE	SIZE (SF)	LEASE TYPE	LEASE RATE
1135 Business Pkwy Suite 63	4,622 SF	Call for Info	Call for Info

Bill Harrison
Senior Vice President
443.741.4045
bharrison@lee-associates.com

All information furnished regarding property for sale, rental or financing is from sources deemed reliable, but no warranty or representation is made to the accuracy thereof and same is submitted to errors, omissions, change of price, rental or other conditions prior to sale, lease or financing or withdrawal without notice. No liability of any kind is to be imposed on the broker herein.