

**BERKSHIRE
HATHAWAY**
HOMESERVICES

UTAH
PROPERTIES

COMMERCIAL DIVISION



MODERN OFFICE SPACE WITH ABUNDANT NATURAL LIGHT SECOND FLOOR - 1,600 SF FOR LEASE

5445 S. HIGHLAND DRIVE | SALT LAKE CITY, UT 84117

FOR LEASE \$24/SF, Full Service

TODD McLACHLAN
(801) 520-9005
todd@utahcre.com

JILL SNYDER
(435) 671-0793
jill@utahcre.com

CHELSEA WALL
(435) 671-3541
chelsea@utahcre.com

- IDEALLY LOCATED NEAR RETAIL, DINING, & BANKING
- CONVENIENT ACCESS TO BOTH I-215 & I-15
- LOCATED IN THE EXCLUSIVE HOLLADAY AREA AT HIGHLAND DRIVE & WALKER LANE
- PARKING: 4/1,000

© 2025 BHH Affiliates, LLC. An independently owned and operated franchisee of BHH Affiliates, LLC. Berkshire Hathaway HomeServices and the Berkshire Hathaway HomeServices symbol are registered service marks of Columbia Insurance Company, a Berkshire Hathaway affiliate. Equal Housing Opportunity. Information not verified or guaranteed. Berkshire Hathaway HomeServices and/or its representatives do not warrant or guarantee this information. Information herein was provided by Owner/Seller. Lessee/Purchaser is responsible to confirm any information considered a factor in a decision to lease or purchase.

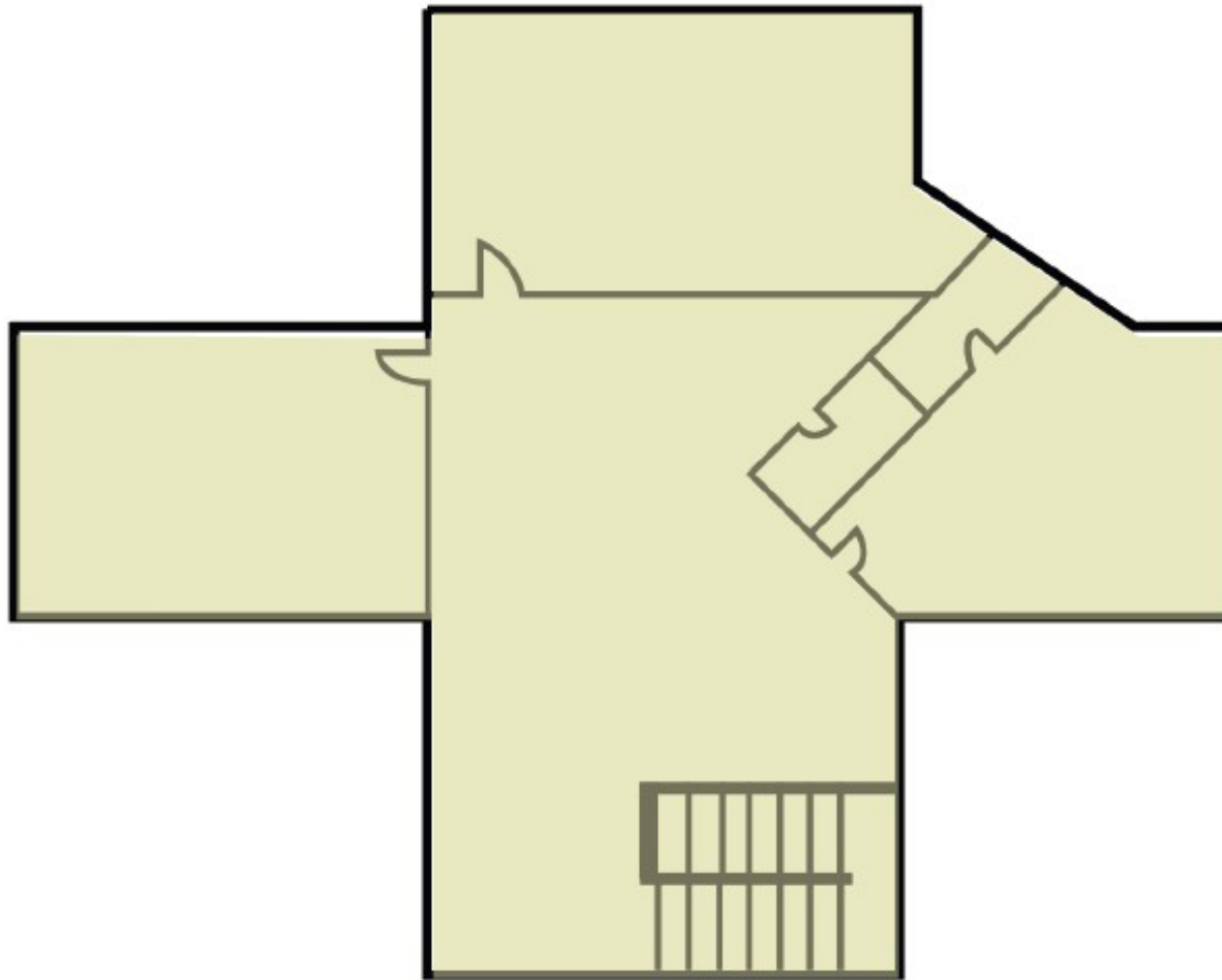
PROPERTY PHOTOS

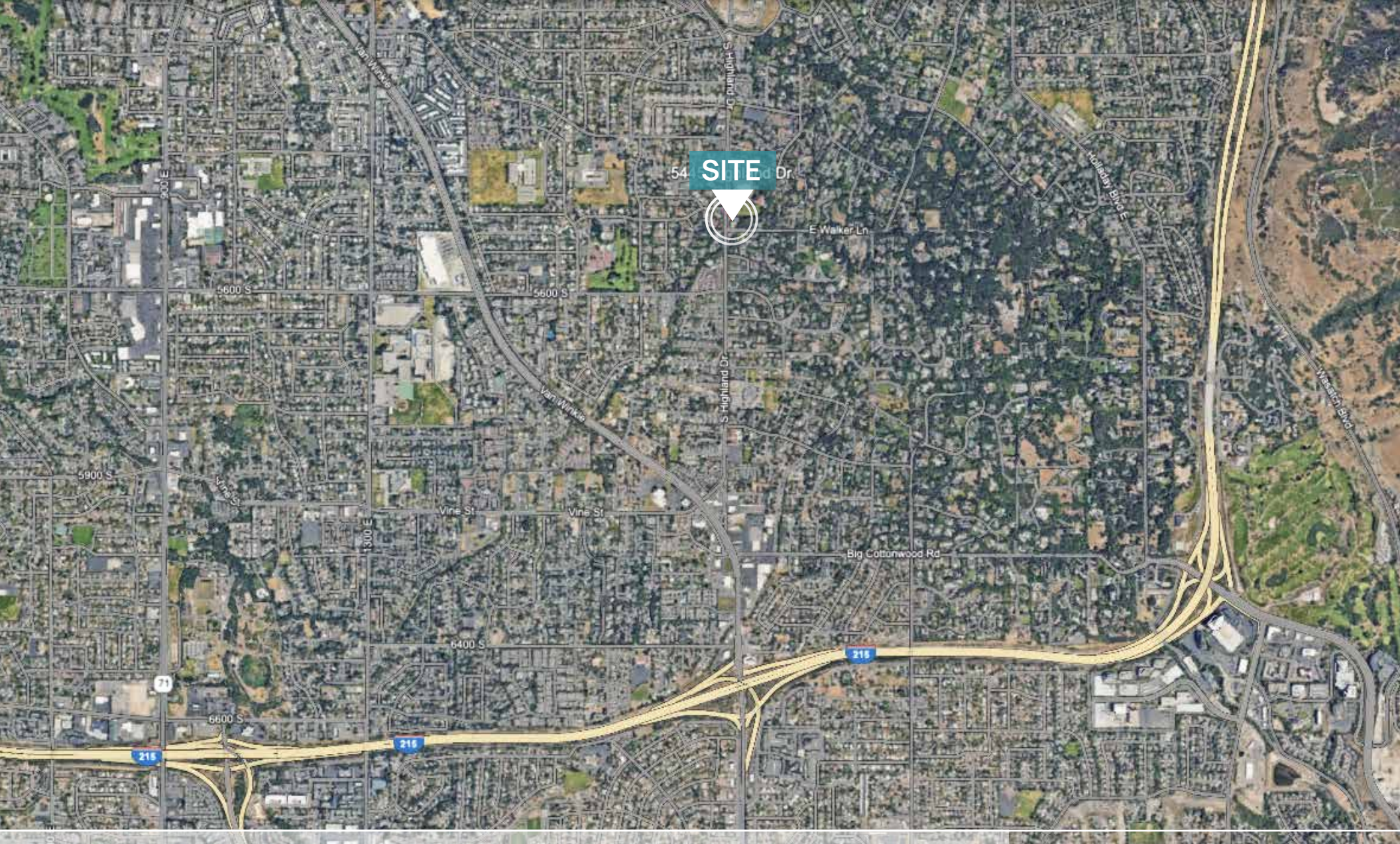
FOR LEASE 5445 S. HIGHLAND DRIVE | SALT LAKE CITY, UT 84117



FLOOR PLAN

FOR LEASE 5445 S. HIGHLAND DRIVE | SALT LAKE CITY, UT 84117





Contact us today to schedule a tour or request additional information!

TODD McLACHLAN
(801) 520-9005
todd@utahcre.com

JILL SNYDER
(435) 671-0793
jill@utahcre.com

CHELSEA WALL
(435) 671-3541
chelsea@utahcre.com

**BERKSHIRE
HATHAWAY** | UTAH
HOMESERVICES PROPERTIES

COMMERCIAL DIVISION

© 2025 BHH Affiliates, LLC. An independently owned and operated franchisee of BHH Affiliates, LLC. Berkshire Hathaway HomeServices and the Berkshire Hathaway HomeServices symbol are registered service marks of Columbia Insurance Company, a Berkshire Hathaway affiliate. Equal Housing Opportunity. Information not verified or guaranteed. Berkshire Hathaway HomeServices and/or its representatives do not warrant or guarantee this information. Information herein was provided by Owner/Seller. Lessee/Purchaser is responsible to confirm any information considered a factor in a decision to lease or purchase.