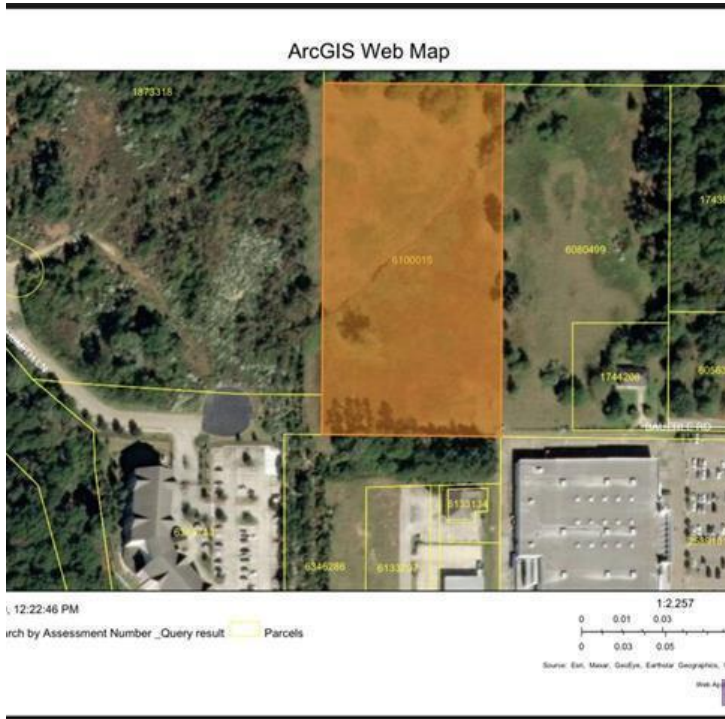


# VACANT LAND

Bauerle Road , Hammond, LA 70403



## OFFERING SUMMARY

<b>SALE PRICE:</b>	\$295,000
<b>LOT SIZE:</b>	5.05 Acres
<b>ZONING:</b>	MIXED USE
<b>PRICE / SF:</b>	\$1.34

## PROPERTY OVERVIEW

CONVENTIONAL FINANCING

## PROPERTY HIGHLIGHTS

- CLOSE TO LARGE NATIONAL RETAILERS
- GROWING AREA
- NEW CONSTRUCTION COMMUNITY ADJOINING PROPERTY

**KW COMMERCIAL**  
1522 W. Causeway Approach  
Mandeville, LA 70471

**RAM PROPERTIES**  
Each Office Independently Owned And Operated, Licensed In La.  
O: 225.603.0610  
C: 985.520.7864  
admin@ramproperties.net

We obtained the information above from sources we believe to be reliable. However, we have not verified its accuracy and make no guarantee, warranty or representation about it. It is submitted subject to the possibility of errors, omissions, change of price, rental or other conditions, prior sale, lease or financing, or withdrawal without notice. We include projections, opinions, assumptions or estimates for example only, and they may not represent current or future performance of the property. You and your tax and legal advisors should conduct your own investigation of the property and transaction.

Each Office Independently Owned and Operated [kwcommercial.com](http://kwcommercial.com)

**LAND FOR SALE**

# VACANT LAND

Bauerle Road , Hammond, LA 70403



**KW COMMERCIAL**  
1522 W. Causeway Approach  
Mandeville, LA 70471

**RAM PROPERTIES**  
Each Office Independently Owned And Operated, Licensed In La.  
O: 225.603.0610  
C: 985.520.7864  
admin@ramproperties.net

We obtained the information above from sources we believe to be reliable. However, we have not verified its accuracy and make no guarantee, warranty or representation about it. It is submitted subject to the possibility of errors, omissions, change of price, rental or other conditions, prior sale, lease or financing, or withdrawal without notice. We include projections, opinions, assumptions or estimates for example only, and they may not represent current or future performance of the property. You and your tax and legal advisors should conduct your own investigation of the property and transaction.

Each Office Independently Owned and Operated [kwcommercial.com](http://kwcommercial.com)

# VACANT LAND

Bauerle Road , Hammond, LA 70403



**KW COMMERCIAL**  
1522 W. Causeway Approach  
Mandeville, LA 70471

**RAM PROPERTIES**  
Each Office Independently Owned And Operated, Licensed In La.  
O: 225.603.0610  
C: 985.520.7864  
admin@ramproperties.net

We obtained the information above from sources we believe to be reliable. However, we have not verified its accuracy and make no guarantee, warranty or representation about it. It is submitted subject to the possibility of errors, omissions, change of price, rental or other conditions, prior sale, lease or financing, or withdrawal without notice. We include projections, opinions, assumptions or estimates for example only, and they may not represent current or future performance of the property. You and your tax and legal advisors should conduct your own investigation of the property and transaction.

Each Office Independently Owned and Operated [kwcommercial.com](http://kwcommercial.com)

# VACANT LAND

Bauerle Road , Hammond, LA 70403



<b>POPULATION</b>	<b>1 MILE</b>	<b>5 MILES</b>	<b>10 MILES</b>
Total population	4,328	47,716	87,721
Median age	32.6	32.6	33.3
Median age (male)	26.9	31.4	32.3
Median age (Female)	36.4	33.4	34.0

<b>HOUSEHOLDS &amp; INCOME</b>	<b>1 MILE</b>	<b>5 MILES</b>	<b>10 MILES</b>
Total households	1,610	18,021	32,704
# of persons per HH	2.7	2.6	2.7
Average HH income	\$39,187	\$54,441	\$55,855
Average house value	\$140,942	\$172,658	\$168,075

*\* Demographic data derived from 2010 US Census*

**KW COMMERCIAL**  
 1522 W. Causeway Approach  
 Mandeville, LA 70471

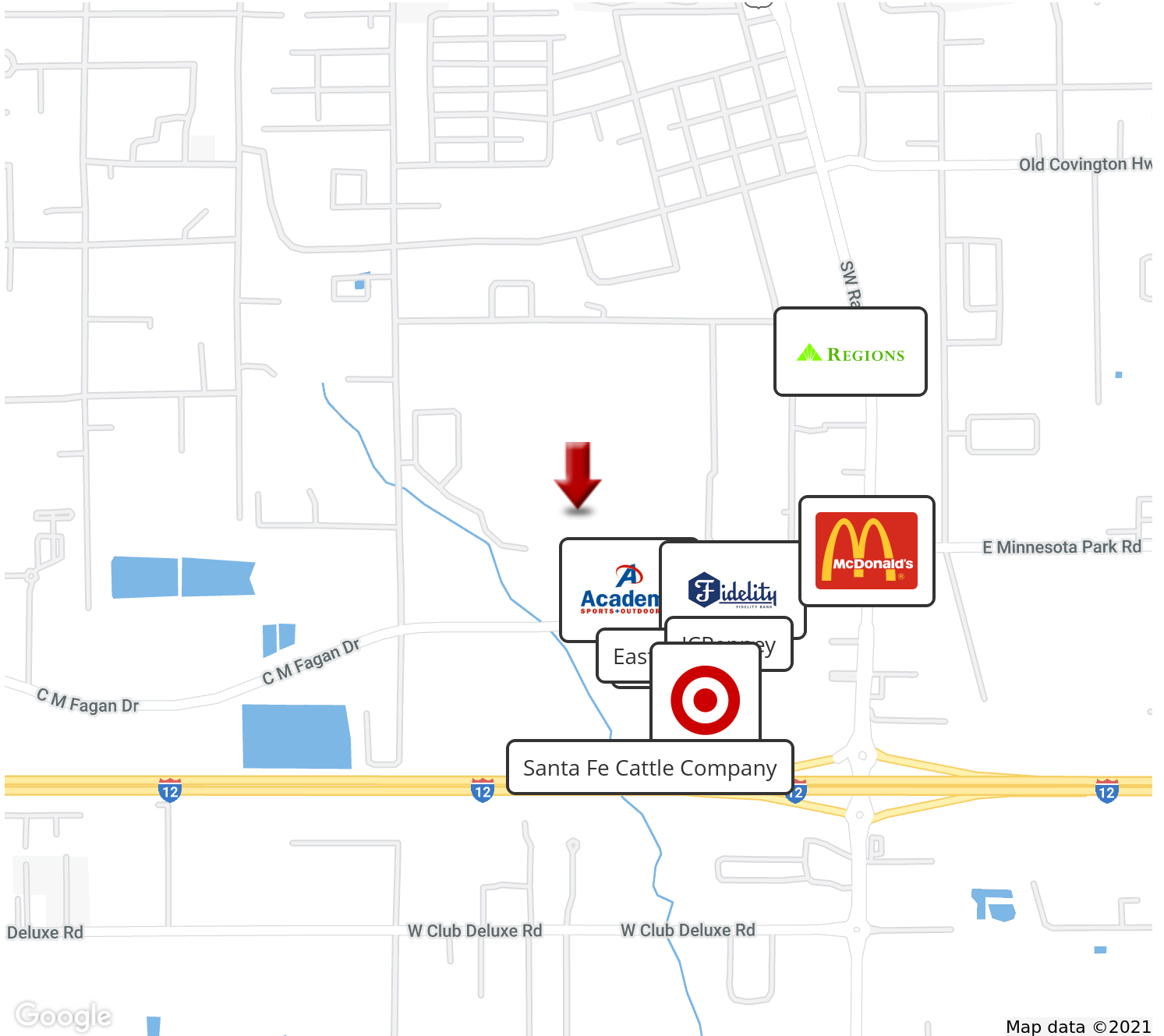
**RAM PROPERTIES**  
 Each Office Independently Owned And Operated, Licensed In La.  
 O: 225.603.0610  
 C: 985.520.7864  
 admin@ramproperties.net

We obtained the information above from sources we believe to be reliable. However, we have not verified its accuracy and make no guarantee, warranty or representation about it. It is submitted subject to the possibility of errors, omissions, change of price, rental or other conditions, prior sale, lease or financing, or withdrawal without notice. We include projections, opinions, assumptions or estimates for example only, and they may not represent current or future performance of the property. You and your tax and legal advisors should conduct your own investigation of the property and transaction.

# LAND FOR SALE

## VACANT LAND

Bauerle Road , Hammond, LA 70403



**KW COMMERCIAL**  
1522 W. Causeway Approach  
Mandeville, LA 70471

**RAM PROPERTIES**  
Each Office Independently Owned And Operated, Licensed In La.  
O: 225.603.0610  
C: 985.520.7864  
admin@ramproperties.net

We obtained the information above from sources we believe to be reliable. However, we have not verified its accuracy and make no guarantee, warranty or representation about it. It is submitted subject to the possibility of errors, omissions, change of price, rental or other conditions, prior sale, lease or financing, or withdrawal without notice. We include projections, opinions, assumptions or estimates for example only, and they may not represent current or future performance of the property. You and your tax and legal advisors should conduct your own investigation of the property and transaction.

Each Office Independently Owned and Operated [kwcommercial.com](http://kwcommercial.com)