

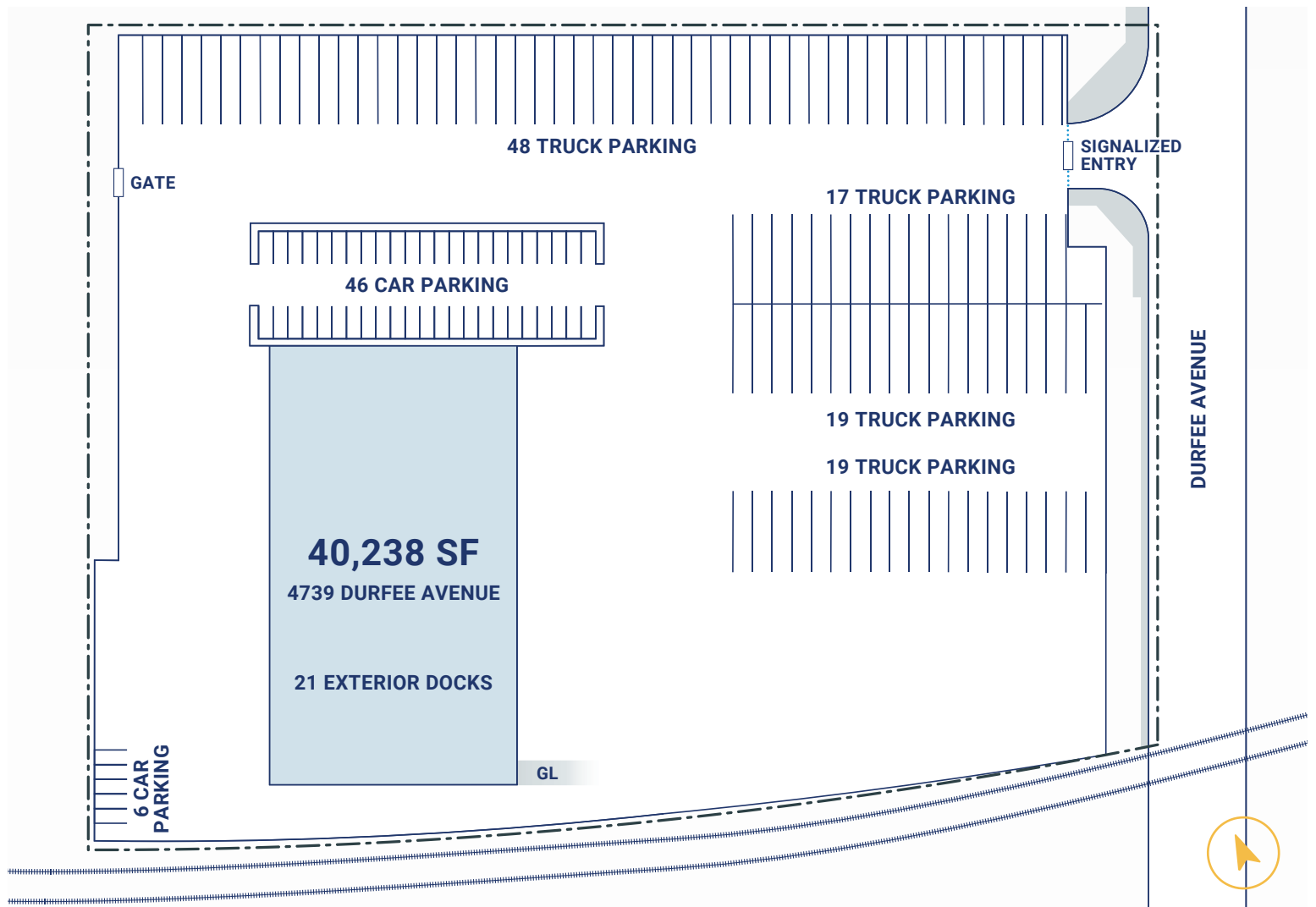
40,238 SF Cross Dock on 7.26 Acres

4739 Durfee Ave

Pico Rivera, CA

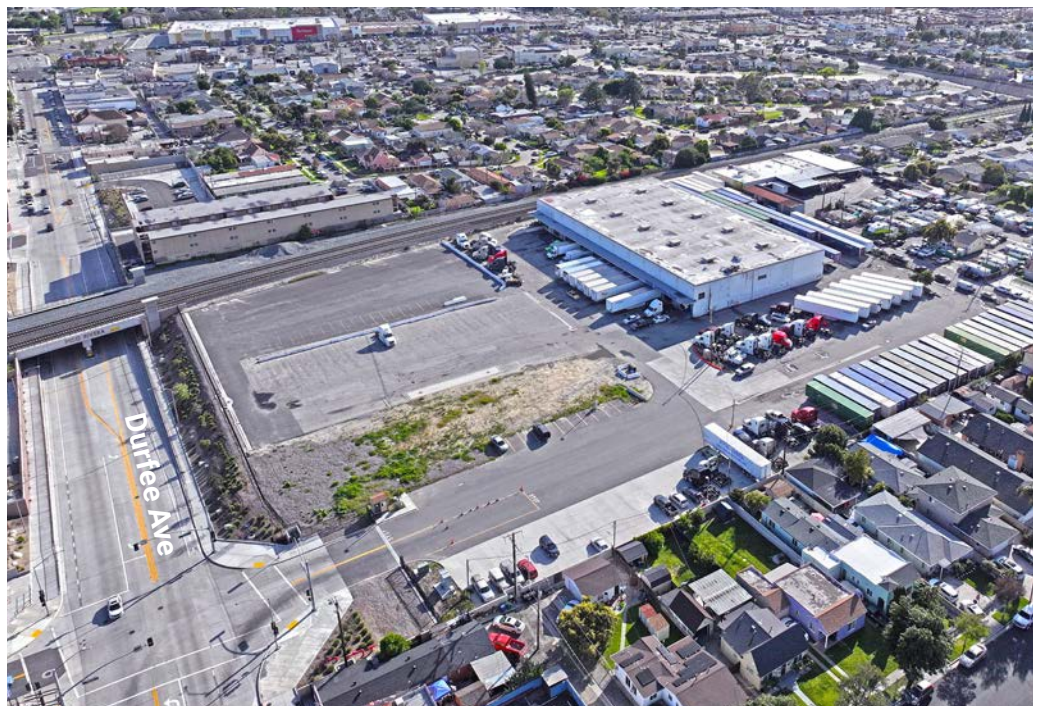


# Site Plan

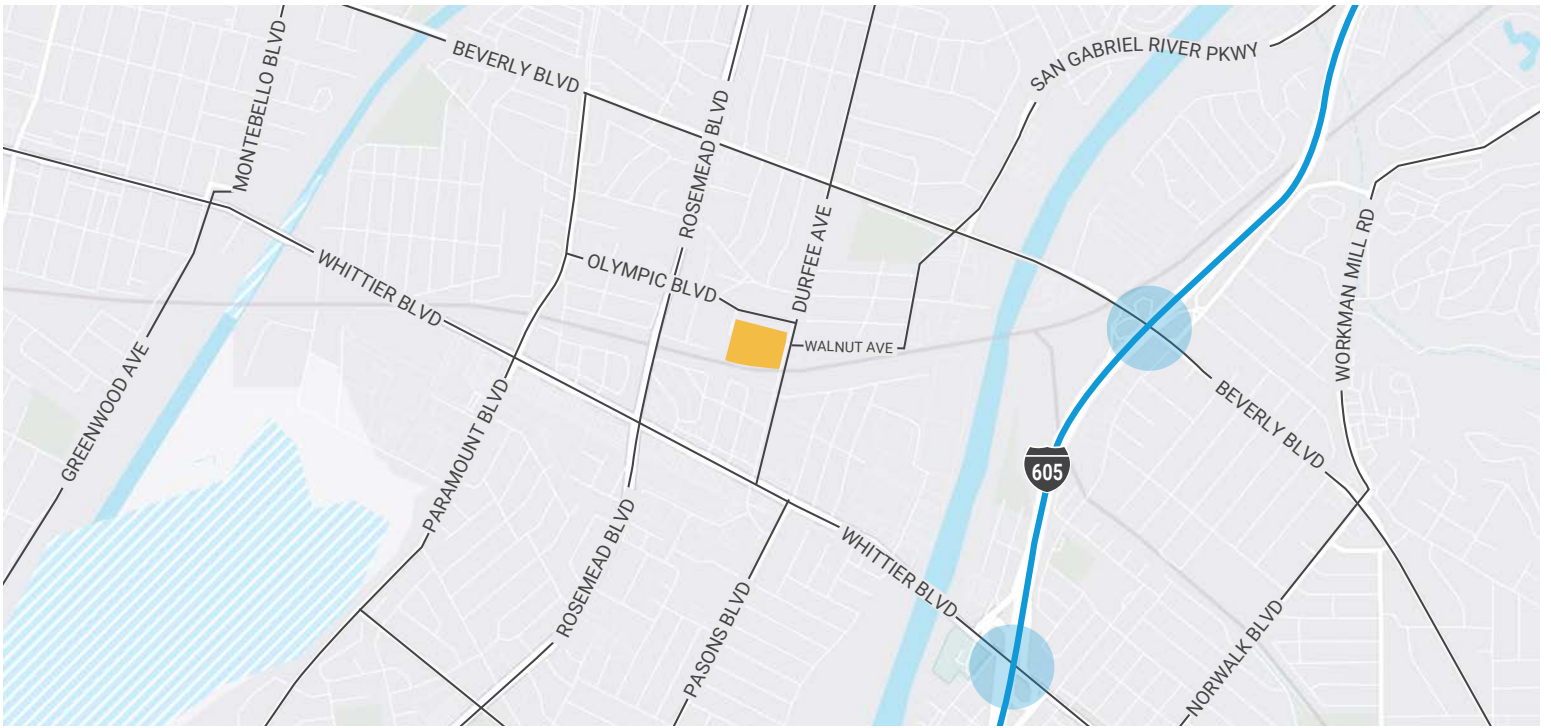


## Key

1. I-605 Corridor
2. +/- 7.26 acres
3. 40,238 SF cross-dock available
4. 21 dock high doors
5. 1 grade level door
6. 24' clear height
7. 103 truck/trailer stalls
8. 52 car parking stalls
9. Fully secured site, fenced and gated
10. New office to suit
11. ESFR sprinklers
12. 1,200 amps, 277/480 volt, 3 phase power supply
13. New paving and landscaping
14. Signalized entrance



# 4739 Durfee Avenue, Pico Rivera

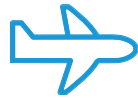


## Location Highlights



### Ports of LA/Long Beach

28 miles | 35 mins.



### LAX Airport

30 miles | 30 mins.



### Central LA Location

Prime last mile "infill" location



### Low Coverage

Prime Low-Coverage property in "infill" market.

## Location Highlights

- + Located in the Central Los Angeles submarket of the Greater Los Angeles market.
- + Immediate access to I-605, I-5, and 60 Freeways
- + Fully secured site
- + 8.5 million population within a 20-mile radius.





**CenterPoint**  
4739 Durfee Avenue

## Key Distances

### LAX Airport

30 miles

### BNSF Intermodal Facility

5.8 miles

### Port of Los Angeles

### Port of Los Angeles/Long Beach

28 miles

### UP Intermodal Facility

7.5 miles

## About CenterPoint

CenterPoint is an industrial real estate company made up of dedicated thinkers, innovators and leaders with the creativity and know-how to tackle the industry's toughest challenges. And it's those kinds of problems—the delicate, the complex, the seemingly-impossible—that we relish most. Because with an agile team, substantial access to capital and industry-leading expertise, those are exactly the kinds of problems we're built to solve. For more information on CenterPoint Properties, visit [centerpoint.com](http://centerpoint.com), follow [@centerpointprop](https://twitter.com/centerpointprop) on Twitter or engage with us on [LinkedIn](https://www.linkedin.com/company/centerpoint).

[centerpoint.com](http://centerpoint.com)

All information is subject to verification and no liability for errors or omissions is assumed.

Owned and Developed By



Bob Andrews  
213.488.8689  
[bandrews@centerpoint.com](mailto:bandrews@centerpoint.com)

Exclusive Marketing Agent



Clyde F. Stauff, SIOR  
949.724.5543  
[clyde.stauff@colliers.com](mailto:clyde.stauff@colliers.com)  
License No. 00464008

Jace Gan  
949.724.5529  
[jace.gan@colliers.com](mailto:jace.gan@colliers.com)  
License No. 01990636