

435

FIFTH AVENUE

BETWEEN 38TH STREET & 39TH STREET | MIDTOWN

ksr
KASSIN SABBAGH REALTY



435 FIFTH AVENUE

BETWEEN 38TH STREET & 39TH STREET | MIDTOWN

PROPERTY HIGHLIGHTS

- Two story retail space available
- Close vicinity to Bryant Park, NY Public Library, Grand Central and the Empire State Building
- Prep kitchen and walk-in refrigerator currently in basement
- All uses considered

SIZE

Ground Floor	2,500 SF
2nd Floor	2,000 SF
Basement	1,600 SF

FRONTAGE

21'

CEILINGS

10'

ASKING RENT

Upon Request

POSSESSION

ASAP

TRANSPORTATION



CONTACT OUR BROKERS FOR MORE INFORMATION

CAROLINA AZIZ
CAziz@ksrny.com

516.640.6961

ALBERT MANOPLA
AManopla@ksrny.com

212.380.8369



All information supplied in this marketing presentation and/or flyer is from sources deemed reliable and is furnished subject to errors, omissions, modifications, removal of listings from sale/lease and to any listing condition. Any square footage, dimensions, floor plans and/or technical data set forth are approximations and are subject to further elaboration/confirmation.

435 FIFTH AVENUE

BETWEEN 38TH STREET & 39TH STREET | MIDTOWN



CONTACT OUR BROKERS FOR MORE INFORMATION

CAROLINA AZIZ
CAziz@ksrny.com

516.640.6961

ALBERT MANOPLA
AManopla@ksrny.com

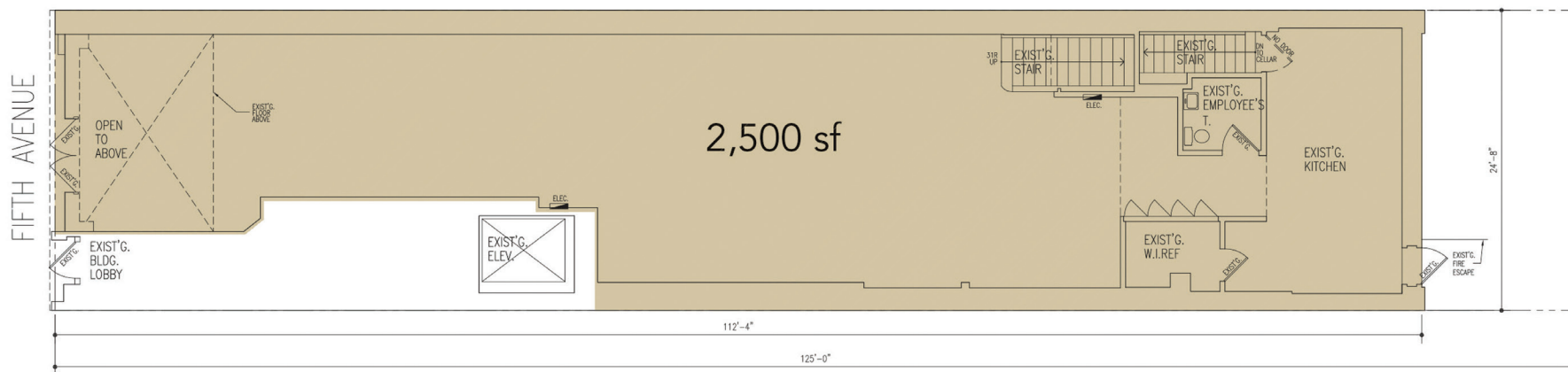
212.380.8369



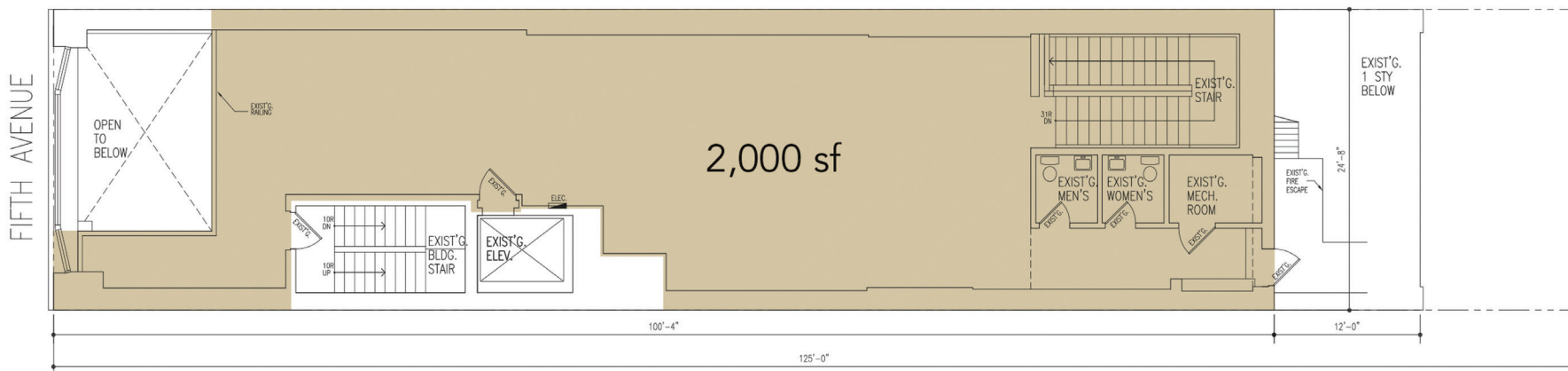
All information supplied in this marketing presentation and/or flyer is from sources deemed reliable and is furnished subject to errors, omissions, modifications, removal of listings from sale/lease and to any listing condition. Any square footage, dimensions, floor plans and/or technical data set forth are approximations and are subject to further elaboration/confirmation.

435 FIFTH AVENUE

BETWEEN 38TH STREET & 39TH STREET | MIDTOWN



GROUND FLOOR



SECOND FLOOR

CONTACT OUR BROKERS FOR MORE INFORMATION

CAROLINA AZIZ
CAziz@ksrny.com

516.640.6961

ALBERT MANOPLA
AManopla@ksrny.com

212.380.8369