

FOR LEASE

INDUSTRIAL SPACE

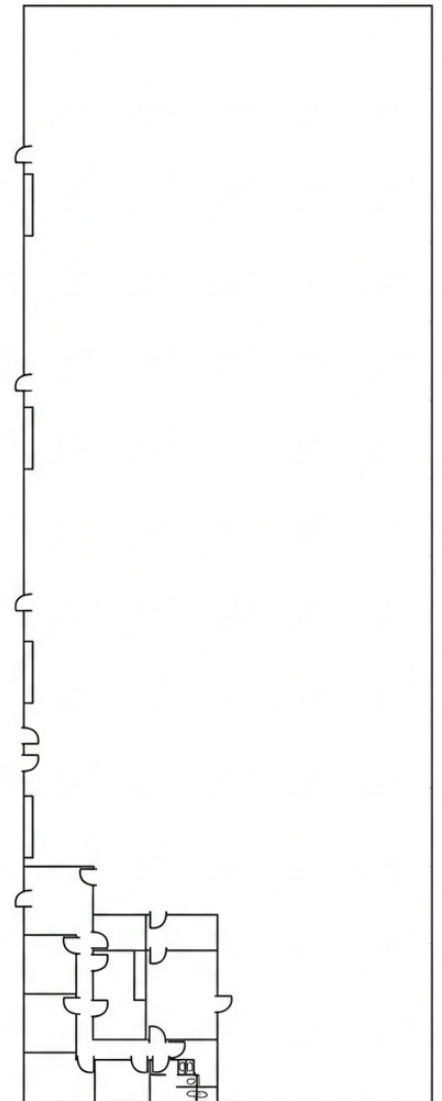


231 S Maple Avenue | South San Francisco, CA 94080

PROPERTY DETAILS

- Contact Agents for Pricing
- Building Size: ±27,360 sq.ft.
 - Office: ±3,200 sq.ft.
 - Warehouse: ±24,160 sq.ft.
- Ceiling Height: 18 feet - 20 feet
- 1 Loading Dock / 3 Drive-in Doors
- Zoning: [MIH \(Mixed Industrial High\)](#)

*Floor Plan Not to Scale



CONTACT FOR DETAILS



Andrew Peceimer

Senior Commercial Real Estate Advisor
DRE #00993289
(650) 344-4300
apeceimer@cdbcurlingame.com



Garrett Swartz

Commercial Real Estate Advisor
DRE #02178894
(650) 352-3302
gswartz@cdbcurlingame.com



Arthur Coelho

Commercial Real Estate Advisor
DRE #02373096
(650) 483-7805
acoelho@cdbcurlingame.com

1575 Bayshore Highway, Suite 100, Burlingame, CA 94010 | 650-344-4300 | CBCBurlingame.com

©2026 Coldwell Banker Real Estate LLC, dba Coldwell Banker Commercial Westbay Real Estate Group. All rights reserved. Coldwell Banker Commercial® and the Coldwell Banker Commercial logo are registered service marks owned by Coldwell Banker Real Estate LLC. Coldwell Banker Real Estate LLC, dba Coldwell Banker Commercial Affiliates fully supports the principal of the Fair Housing Act and the Equal Opportunity Act. Each office is independently owned and operated. The information provided is deemed reliable, but it is not guaranteed to be accurate or complete, and it should not be relied upon as such. This information should be independently verified before any person enters into a transaction based upon it.