

# 128 GREAT ROAD

STOW,  
MASSACHUSETTS



ANDREW MURMES  
617.369.5909  
amurmes@atlanticretail.com

JACK LYMAN  
860.391.1736  
jlyman@atlanticretail.com

SCOTT BLACK  
617.369.5902  
sblack@atlanticretail.com

**.35 ACRE PROPERTY  
AVAILABLE**  
FOR SALE



## PROJECT HIGHLIGHTS

- .35 acre parcel with small building available for sale
- Building Specifics: Three levels (Basement 744 SF, First Floor 744 SF, Second Floor 744 SF)
- The communities within 5 miles of the site boast median household incomes in excess of \$130,000
- Located across the street from Shaw's anchored neighborhood center
- Zone - Business
- Located on Route 62 with a daily traffic count of 11,844 cars per day
- Pylon Sign
- 6+ parking spots

## DEMOGRAPHICS



### TOTAL POPULATION

3 MILES	5 MILES	10 MILES
24,575	72,330	261,683



### DAYTIME POPULATION

3 MILES	5 MILES	10 MILES
23,166	70,224	275,644



### MEDIAN HH INCOME

3 MILES	5 MILES	10 MILES
\$136,118	\$146,475	\$124,439



ANDREW MURMES

617.369.5909

amurmes@atlanticretail.com

JACK LYMAN

860.391.1736

jlyman@atlanticretail.com

SCOTT BLACK

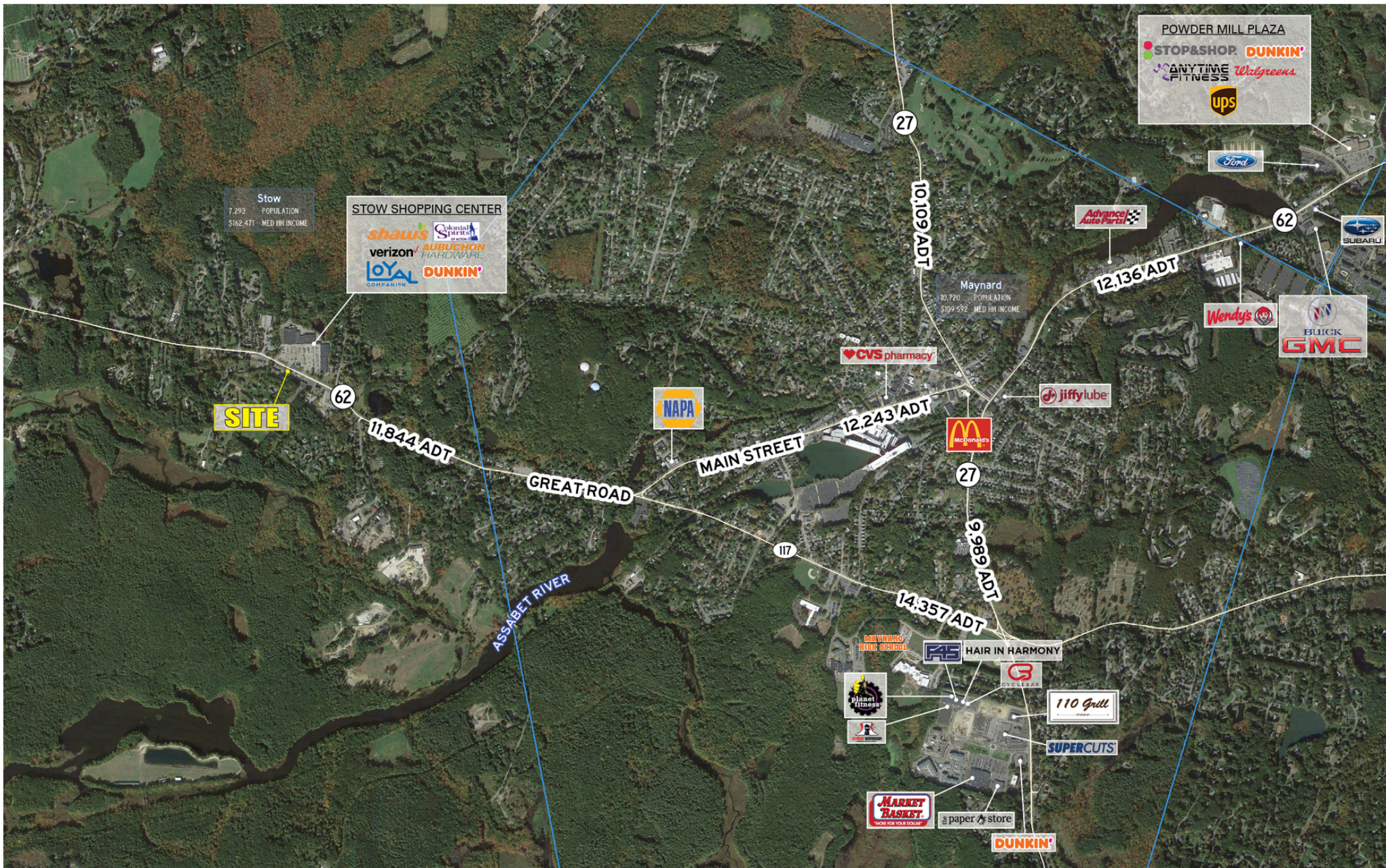
617.369.5902

sblack@atlanticretail.com

**.35 ACRE PROPERTY FOR  
SALE**

STOW, MA





**ANDREW MURMES**

617.369.5909

amurmes@atlanticretail.com

**JACK LYMAN**

860.391.1736

jlyman@atlanticretail.com

**SCOTT BLACK**

617.369.5902

sblack@atlanticretail.com

**.35 ACRE PROPERTY FOR SALE**

STOW, MA