



3082 EVERGREEN PARKWAY
Evergreen, Colorado 80439



PROPERTY FEATURES

- Great North Evergreen location
- Easy access to I-70
- Excellent visibility from Evergreen Parkway
- Beautifully landscaped
- Gorgeous views
- First floor suites

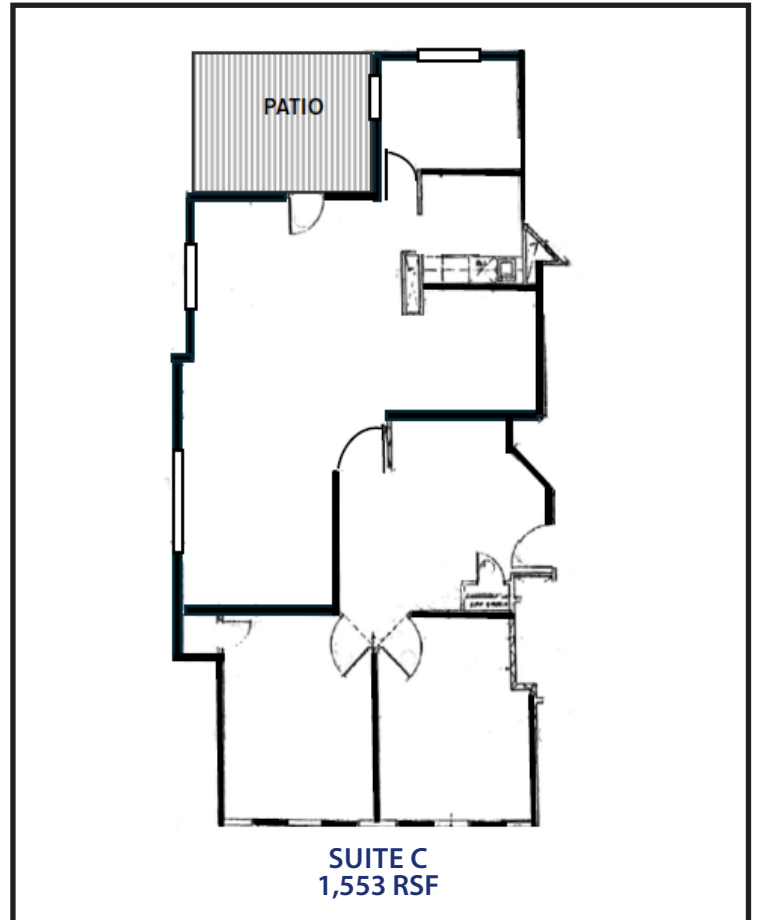
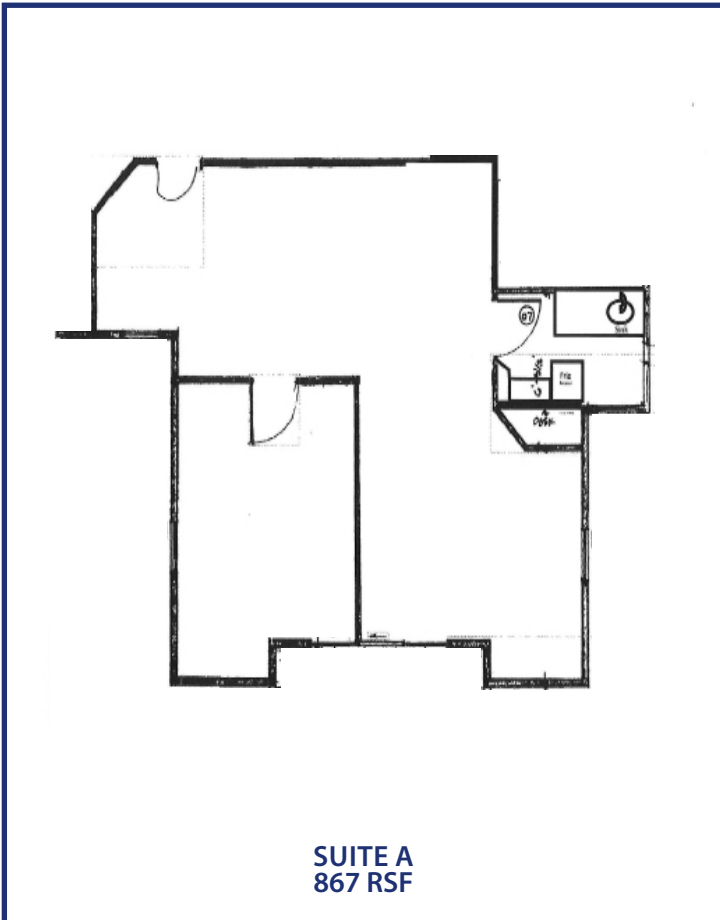
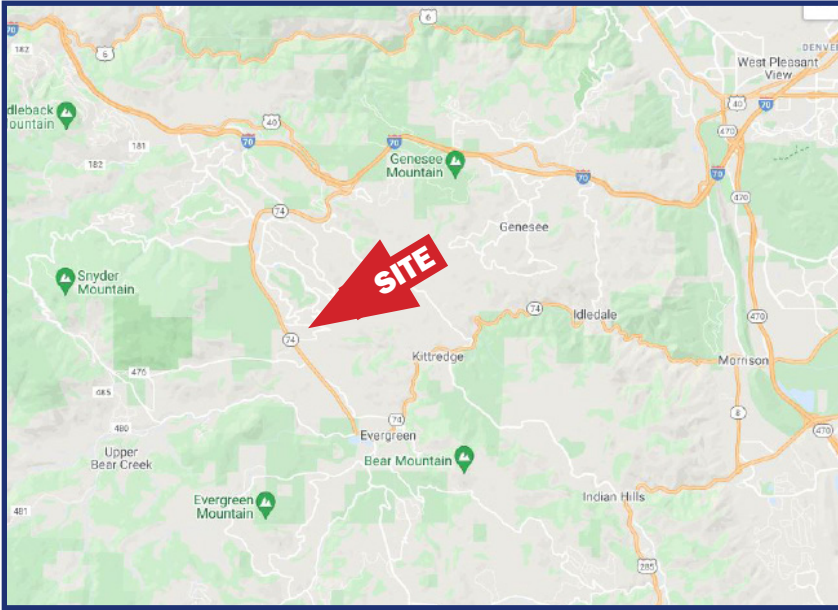
BUILDING SPECIFICATIONS

Available:	Suite A	867 RSF
	Suite C	1,553 RSF
Lease Rate:		\$19.50/RSF MG
Building Size:		8,293 SF
Year Built:		1993
Stories:		2
Elevator:		1

FOR MORE INFORMATION CONTACT:

JAMIE MACBETH
jmacbeth@gcgcre.com | 720.476.5229

RENÉE SPICER
rspicer@gcgcre.com | 720.476.5226



FOR MORE INFORMATION CONTACT:

JAMIE MACBETH
jmacbeth@gcgcre.com | 720.476.5229

RENÉE SPICER
rspicer@gcgcre.com | 720.476.5226